


Anti-RING1 antibody [EPR13047] ab180170

敲除验证
重组
RabMAb

[1 References](#)
[7 图像](#)

概述

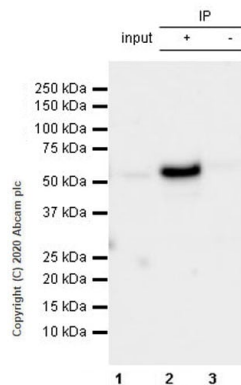
产品名称	Anti-RING1抗体[EPR13047]
描述	兔单克隆抗体[EPR13047] to RING1
宿主	Rabbit
经测试应用	适用于: IHC-P, WB, ICC/IF, IP 不适用于: Flow Cyt
种属反应性	与反应: Human 预测可用于: Dog, Chimpanzee, Rhesus monkey, Gorilla 
免疫原	Synthetic peptide within Human RING1 aa 150-250 (Cysteine residue). The exact sequence is proprietary. Database link: Q06587
阳性对照	Human endometrial carcinoma and pancreas tissues. Ramos, MOLT4, LNCaP and HeLa whole cell lysate (ab150035). HeLa cells.
常规说明	<p>This product is a recombinant monoclonal antibody, which offers several advantages including:</p> <ul style="list-style-type: none"> - High batch-to-batch consistency and reproducibility - Improved sensitivity and specificity - Long-term security of supply - Animal-free production <p>For more information see here.</p> <p>Our RabMAb[®] technology is a patented hybridoma-based technology for making rabbit monoclonal antibodies. For details on our patents, please refer to RabMAb[®] patents.</p> <p>Mouse, Rat: We have preliminary internal testing data to indicate this antibody may not react with these species. Please contact us for more information.</p>

性能

形式	Liquid
存放说明	Shipped at 4°C. Store at +4°C short term (1-2 weeks). Upon delivery aliquot. Store at -20°C long term. Avoid freeze / thaw cycle.
存储溶液	pH: 7.20 Preservative: 0.01% Sodium azide

纯度	Tissue culture supernatant
克隆	单克隆
克隆编号	EPR13047
同种型	IgG

应用	Ab评论	说明
IHC-P		1/50 - 1/100. Perform heat mediated antigen retrieval with citrate buffer pH 6 before commencing with IHC staining protocol.
WB		1/1000 - 1/10000. Predicted molecular weight: 42 kDa.
ICC/IF		1/50 - 1/100.
IP		1/30.



Immunoprecipitation - Anti-RING1 antibody
[EPR13047] (ab180170)

RING1 was immunoprecipitated from 0.35 mg HeLa (human cervix adenocarcinoma epithelial cell) whole cell lysate with ab180170 at 1/30 dilution (2ug in 0.35mg lysates). Western blot was performed on the immunoprecipitate using ab180170 at 1/2000 dilution. VeriBlot for IP Detection Reagent (HRP)([ab131366](#)) was used at 1/10000 dilution.

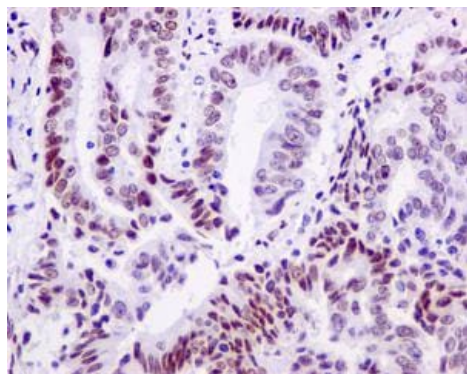
Lane 1: HeLa (human cervix adenocarcinoma epithelial cell) whole cell lysate 10 ug

Lane 2: ab180170 IP in HeLa whole cell lysate

Lane 3: Rabbit monoclonal IgG ([ab172730](#)) instead of ab180170 in mouse cerebellum tissue lysate

Blocking and dilution buffer and concentration: 5% NFDm/TBST.

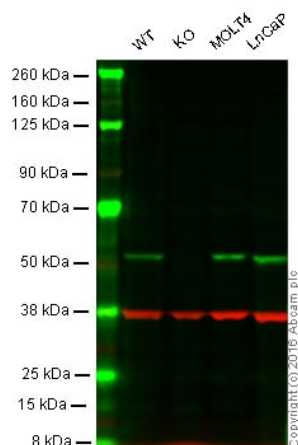
Exposure time: 15 seconds



Immunohistochemistry (Formalin/PFA-fixed paraffin-embedded sections) - Anti-RING1 antibody
[EPR13047] (ab180170)

Immunohistochemical analysis of paraffin-embedded Human endometrial carcinoma tissue labeling RING1 using ab180170 at 1/50 dilution.

Perform heat mediated antigen retrieval with citrate buffer pH 6 before commencing with IHC staining protocol.



Western blot - Anti-RING1 antibody [EPR13047]
(ab180170)

Lane 1: Wild-type HAP1 cell lysate (20 µg)

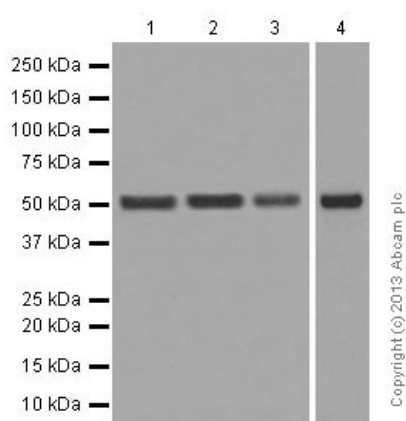
Lane 2: RING1 knockout HAP1 cell lysate (20 µg)

Lane 3: MOLT4 cell lysate (20 µg)

Lane 4: LnCaP cell lysate (20 µg)

Lanes 1 - 4: Merged signal (red and green). Green - ab180170 observed at 52 kDa. Red - loading control, [ab8245](#), observed at 37 kDa.

ab180170 was shown to specifically react with RING1 when RING1 knockout samples were used. Wild-type and RING1 knockout samples were subjected to SDS-PAGE. ab180170 and [ab8245](#) (loading control to GAPDH) were diluted 1/1000 and 1/10000 respectively and incubated overnight at 4°C. Blots were developed with Goat anti-Rabbit IgG H&L (IRDye® 800CW) preadsorbed [ab216773](#) and Goat anti-Mouse IgG H&L (IRDye® 680RD) preadsorbed [ab216776](#) secondary antibodies at 1/10000 dilution for 1 hour at room temperature before imaging.



Western blot - Anti-RING1 antibody [EPR13047]
(ab180170)

All lanes : Anti-RING1 antibody [EPR13047] (ab180170) at 1/5000 dilution

Lane 1 : Ramos (human Burkitt's lymphoma) whole cell lysate

Lane 2 : MOLT-4 (human acute lymphoblastic leukemia) whole cell lysate

Lane 3 : LNCaP (Human prostate carcinoma) whole cell lysate

Lane 4 : HeLa (human cervix adenocarcinoma) whole cell lysate

Lysates/proteins at 10 µg per lane.

Secondary

All lanes : Goat Anti-Rabbit IgG, (H+L), Peroxidase conjugated at 1/2000 dilution

Predicted band size: 42 kDa

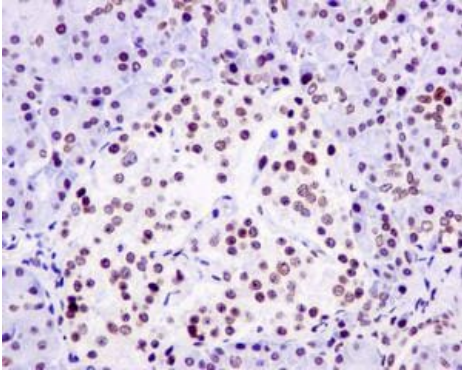
Observed band size: 50 kDa

Blocking and diluting buffer and concentration 5% NFDM/TBST.

Exposure Time:

Lane 1-3: 3 minutes;

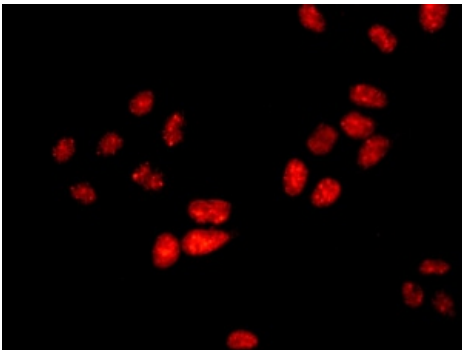
Lane 4: 1 minute



Immunohistochemistry (Formalin/PFA-fixed paraffin-embedded sections) - Anti-RING1 antibody [EPR13047] (ab180170)

Immunohistochemical analysis of paraffin-embedded Human pancreas tissue labeling RING1 using ab180170 at 1/50 dilution.

Perform heat mediated antigen retrieval with citrate buffer pH 6 before commencing with IHC staining protocol.



Immunocytochemistry/ Immunofluorescence - Anti-RING1 antibody [EPR13047] (ab180170)

Immunofluorescence analysis of HeLa cells labeling RING1 using ab180170 at 1/50 dilution.

Why choose a recombinant antibody?



Research with confidence
Consistent and reproducible results



Long-term and scalable supply
Recombinant technology



Success from the first experiment
Confirmed specificity



Ethical standards compliant
Animal-free production

Anti-RING1 antibody [EPR13047] (ab180170)

Please note: All products are "FOR RESEARCH USE ONLY. NOT FOR USE IN DIAGNOSTIC PROCEDURES"

Our Abpromise to you: Quality guaranteed and expert technical support

- Replacement or refund for products not performing as stated on the datasheet
- Valid for 12 months from date of delivery
- Response to your inquiry within 24 hours
- We provide support in Chinese, English, French, German, Japanese and Spanish
- Extensive multi-media technical resources to help you
- We investigate all quality concerns to ensure our products perform to the highest standards

If the product does not perform as described on this datasheet, we will offer a refund or replacement. For full details of the Abpromise, please visit <https://www.abcam.cn/abpromise> or contact our technical team.

Terms and conditions

- Guarantee only valid for products bought direct from Abcam or one of our authorized distributors