


# Anti-RICTOR antibody ab70374

**16 References**   **4 图像**

### 概述

产品名称	Anti-RICTOR抗体
描述	兔多克隆抗体to RICTOR
宿主	Rabbit
特异性	Initial tests for reactivity with mouse RICTOR from NIH3T3 cells suggest that higher amounts of lysate and less dilution of ab70374 are required for brief exposure times.
经测试应用	<b>适用于:</b> WB, IP, Flow Cyt, IHC-P
种属反应性	<b>与反应:</b> Mouse, Human <b>预测可用于:</b> Dog, Chimpanzee, Rhesus monkey, Gorilla, Orangutan 
免疫原	Synthetic peptide corresponding to a region between residue 1650 and the C-terminus (residue 1708) of human RICTOR.
常规说明	<p>The Life Science industry has been in the grips of a reproducibility crisis for a number of years. Abcam is leading the way in addressing this with our range of recombinant monoclonal antibodies and knockout edited cell lines for gold-standard validation. Please check that this product meets your needs before purchasing.</p> <p>If you have any questions, special requirements or concerns, please send us an inquiry and/or contact our Support team ahead of purchase. Recommended alternatives for this product can be found below, along with publications, customer reviews and Q&amp;As</p>

### 性能

形式	Liquid
存放说明	Shipped at 4°C. Upon delivery aliquot and store at -20°C. Avoid freeze / thaw cycles.
存储溶液	pH: 7 Preservative: 0.09% Sodium azide Constituents: 0.1% BSA, Tris buffered saline
纯度	Immunogen affinity purified
克隆	多克隆
同种型	IgG

### 应用

The Abpromise guarantee

Abpromise™承诺保证使用ab70374于以下的经测试应用

“应用说明”部分 下显示的仅为推荐的起始稀释度;实际最佳的稀释度/浓度应由使用者检定。

应用	Ab评论	说明
WB		1/2000 - 1/10000. Detects a band of approximately 192 kDa (predicted molecular weight: 192 kDa).
IP		Use at 2-10 µg/mg of lysate.
Flow Cyt		Use at an assay dependent concentration. 0.5 ug per 1 million cells in a 150 mcl reaction. <b>ab171870</b> - Rabbit polyclonal IgG, is suitable for use as an isotype control with this antibody.
IHC-P		Use a concentration of 2 µg/ml. Perform heat mediated antigen retrieval with citrate buffer pH 6 before commencing with IHC staining protocol.

靶标

功能

Subunit of mTORC2, which regulates cell growth and survival in response to hormonal signals. mTORC2 is activated by growth factors, but, in contrast to mTORC1, seems to be nutrient-insensitive. mTORC2 seems to function upstream of Rho GTPases to regulate the actin cytoskeleton, probably by activating one or more Rho-type guanine nucleotide exchange factors. mTORC2 promotes the serum-induced formation of stress-fibers or F-actin. mTORC2 plays a critical role in AKT1 'Ser-473' phosphorylation, which may facilitate the phosphorylation of the activation loop of AKT1 on 'Thr-308' by PDK1 which is a prerequisite for full activation. mTORC2 regulates the phosphorylation of SGK1 at 'Ser-422'. mTORC2 also modulates the phosphorylation of PRKCA on 'Ser-657'. Plays an essential role in embryonic growth and development.

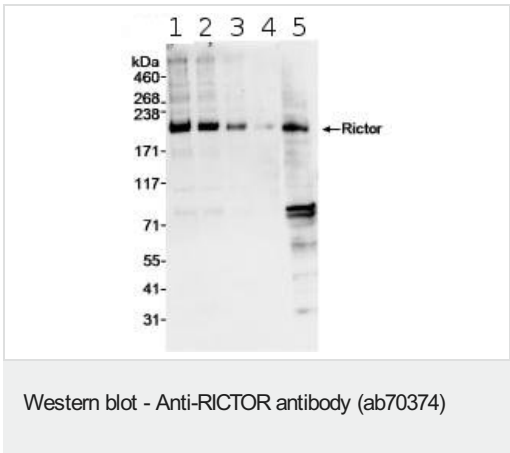
序列相似性

Belongs to the RICTOR family.

翻译后修饰

Phosphorylated by MTOR; when part of mTORC2. Phosphorylated at Thr-1135 by RPS6KB1; phosphorylation of RICTOR inhibits mTORC2 and AKT1 signaling.

图片

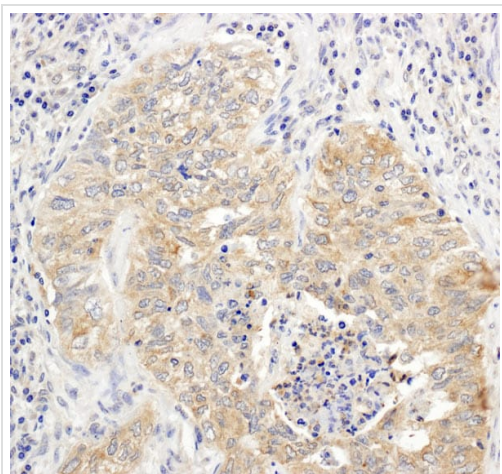


All lanes : Anti-RICTOR antibody (ab70374) at 0.04 µg/ml

- Lane 1 : HeLa whole cell lysate at 5 µg
- Lane 2 : HeLa whole cell lysate at 2.5 µg
- Lane 3 : HeLa whole cell lysate at 1 µg
- Lane 4 : HeLa whole cell lysate at 0.5 µg
- Lane 5 : NIH3T3 cells at 50 µg

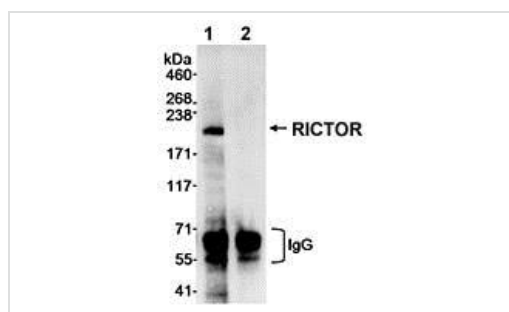
Predicted band size: 192 kDa  
Observed band size: 192 kDa

**Additional bands at:** 78 kDa, 80 kDa. We are unsure as to the identity of these extra bands.



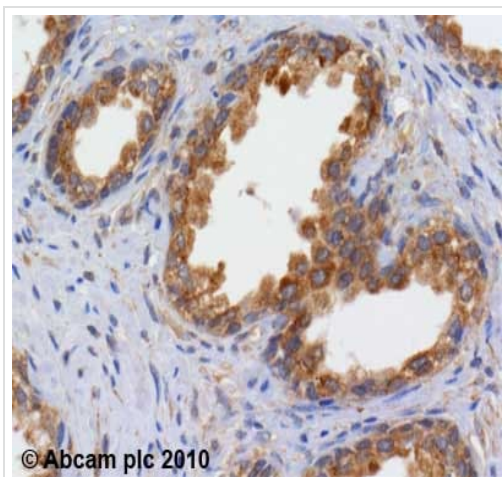
Immunohistochemistry (Formalin/PFA-fixed paraffin-embedded sections) - Anti-RICTOR antibody (ab70374)

Immunohistochemistry (Formalin/PFA-fixed paraffin-embedded sections) analysis of human lung carcinoma tissue labelling RICTOR with ab70374 at 1/1000 (1 µg/ml). Detection: DAB.



Immunoprecipitation - Anti-RICTOR antibody (ab70374)

Detection of Human RICTOR by Immunoprecipitation in Whole cell lysate from HeLa cells (1 mg for IP, 1/4 of IP loaded) using ab70374 at 3 µg/mg for IP (Lane 1) and at 0.04 µg/ml for subsequent WB detection. Lane 2 represents control rabbit IgG.



Immunohistochemistry (Formalin/PFA-fixed paraffin-embedded sections) - Anti-RICTOR antibody (ab70374)

ab70374 (2µg/ml) staining RICTOR in human prostate using an automated system (DAKO Autostainer Plus). Using this protocol there is strong cytoplasmic staining of glandular epithelium. Sections were rehydrated and antigen retrieved with the Dako 3 in 1 AR buffer citrate pH 6.0 in a DAKO PT link. Slides were peroxidase blocked in 3% H<sub>2</sub>O<sub>2</sub> in methanol for 10 mins. They were then blocked with Dako Protein block for 10 minutes (containing casein 0.25% in PBS) then incubated with primary antibody for 20 min and detected with Dako Envision Flex amplification kit for 30 minutes. Colorimetric detection was completed with Diaminobenzidine for 5 minutes. Slides were counterstained with Haematoxylin and coverslipped under DePeX. Please note that, for manual staining, optimization of primary antibody concentration and incubation time is recommended. Signal amplification may be required.

**Please note:** All products are "FOR RESEARCH USE ONLY. NOT FOR USE IN DIAGNOSTIC PROCEDURES"

### Our Abpromise to you: Quality guaranteed and expert technical support

- Replacement or refund for products not performing as stated on the datasheet
- Valid for 12 months from date of delivery
- Response to your inquiry within 24 hours
- We provide support in Chinese, English, French, German, Japanese and Spanish
- Extensive multi-media technical resources to help you
- We investigate all quality concerns to ensure our products perform to the highest standards

If the product does not perform as described on this datasheet, we will offer a refund or replacement. For full details of the Abpromise, please visit <https://www.abcam.cn/abpromise> or contact our technical team.

### Terms and conditions

- Guarantee only valid for products bought direct from Abcam or one of our authorized distributors