

Anti-RhD antibody [D7C2] ab281912

重组

1 图像

概述

产品名称	Anti-RhD抗体[D7C2]
描述	人单克隆抗体[D7C2] to RhD
宿主	Human
经测试应用	适用于: ICC/IF
种属反应性	与反应: Human
免疫原	Tissue, cells or virus corresponding to Human RhD. Rh- volunteer blood donor (r/r) was injected with 5ml of Rh+ erythrocytes (R1/r). Isolated peripheral lymphocytes were transformed with 1 ml of culture supernatant of the EBV marmoset B96-8 cell line. Database link: Q02161
阳性对照	ICC/IF: K562 cells.
常规说明	ab281912 is the recombinant human IgM version of ab281911 .

性能

形式	Liquid
存放说明	Shipped at 4°C. Store at +4°C short term (1-2 weeks). Upon delivery aliquot. Store at -20°C. Avoid freeze / thaw cycle.
存储溶液	Preservative: 0.02% Proclin 300 Constituent: 99% PBS
纯度	Protein A purified
克隆	单克隆
克隆编号	D7C2
同种型	IgM
轻链类型	lambda

应用

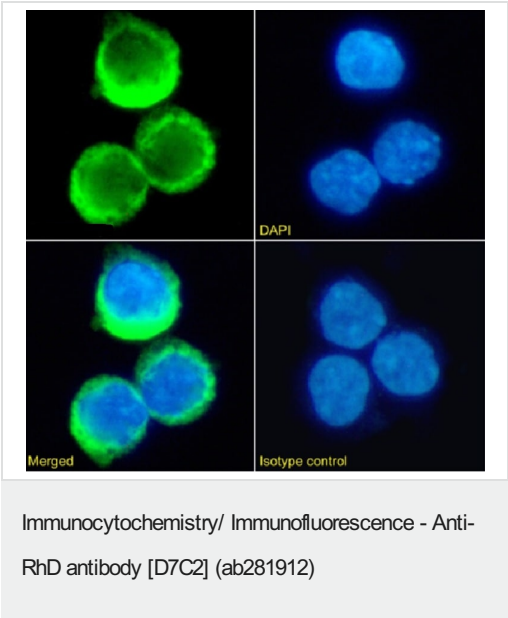
“应用说明”部分 下显示的仅为推荐的起始稀释度;实际最佳的稀释度/浓度应由使用者检定。

应用	Ab评论	说明
ICC/IF		Use a concentration of 10 µg/ml.

靶标

功能	May be part of an oligomeric complex which is likely to have a transport or channel function in the erythrocyte membrane.
组织特异性	Restricted to tissues or cell lines expressing erythroid characters.
序列相似性	Belongs to the ammonium transporter (TC 2.A.49) family. Rh subfamily.
细胞定位	Membrane.

图片



This data was developed using the chimeric version (**ab281911**).

Immunofluorescence analysis of paraformaldehyde fixed K-562 (Human chronic myelogenous leukemia lymphoblast cell line) cells labelling RhD with **ab281911** at 10 µg/ml for 1 hour, followed by Alexa Fluor® 488 secondary antibody at 2 µg/ml (green/top-left). Image showing membrane staining. The nuclear counter stain is DAPI (blue). The isotype control was an unknown specificity antibody followed by staining with Alexa Fluor® 488 secondary antibody. K562 cells were immobilized on Shi-fix™ coverslips.

Please note: All products are "FOR RESEARCH USE ONLY. NOT FOR USE IN DIAGNOSTIC PROCEDURES"

Our Abpromise to you: Quality guaranteed and expert technical support

- Replacement or refund for products not performing as stated on the datasheet
- Valid for 12 months from date of delivery
- Response to your inquiry within 24 hours
- We provide support in Chinese, English, French, German, Japanese and Spanish
- Extensive multi-media technical resources to help you
- We investigate all quality concerns to ensure our products perform to the highest standards

If the product does not perform as described on this datasheet, we will offer a refund or replacement. For full details of the Abpromise,

please visit <https://www.abcam.cn/abpromise> or contact our technical team.

Terms and conditions

- Guarantee only valid for products bought direct from Abcam or one of our authorized distributors