


### Anti-RGS2 antibody ab36561

★★★★☆ **4 Abreviews**   **10 References**   **3 图像**

#### 概述

产品名称	Anti-RGS2抗体
描述	兔多克隆抗体to RGS2
宿主	Rabbit
经测试应用	适用于: WB, ICC/IF
种属反应性	与反应: Human 预测可用于: Mouse, Rat, Dog 
免疫原	Synthetic peptide corresponding to Human RGS2 aa 150 to the C-terminus (C terminal) conjugated to keyhole limpet haemocyanin. (Peptide available as <b>ab36560</b> )
阳性对照	ICC/IF: SKNSH cells
常规说明	<p>The Life Science industry has been in the grips of a reproducibility crisis for a number of years. Abcam is leading the way in addressing this with our range of recombinant monoclonal antibodies and knockout edited cell lines for gold-standard validation. Please check that this product meets your needs before purchasing.</p> <p>If you have any questions, special requirements or concerns, please send us an inquiry and/or contact our Support team ahead of purchase. Recommended alternatives for this product can be found below, along with publications, customer reviews and Q&amp;As</p>

#### 性能

形式	Liquid
存放说明	Shipped at 4°C. Store at +4°C short term (1-2 weeks). Upon delivery aliquot. Store at -20°C or -80°C. Avoid freeze / thaw cycle.
存储溶液	pH: 7.40 Preservative: 0.02% Sodium azide Constituent: PBS
纯度	Batches of this product that have a concentration < 1mg/ml may have BSA added as a stabilising agent. If you would like information about the formulation of a specific lot, please contact our scientific support team who will be happy to help. Immunogen affinity purified

克隆

多克隆

同种型

IgG

应用

The Abpromise guarantee      **Abpromise™**承诺保证使用ab36561于以下的经测试应用

“应用说明”部分 下显示的仅为推荐的起始稀释度;实际最佳的稀释度/浓度应由使用者检定。

应用	Ab评论	说明
WB	★★★★★ (2)	
ICC/IF		

应用说明

ICC/IF: Use at a concentration of 1 µg/ml.  
IHC-P: Use at a dilution of 1/250 for 1 hr.  
WB: Use at a concentration of 1 µg/ml. Detects a band of approximately 23 kDa (predicted molecular weight: 24 kDa).

Not yet tested in other applications.  
Optimal dilutions/concentrations should be determined by the end user.

靶标

功能

Regulates G protein-coupled receptor signaling cascades. Inhibits signal transduction by increasing the GTPase activity of G protein alpha subunits, thereby driving them into their inactive GDP-bound form (PubMed:11063746, PubMed:19478087). Plays a role in the regulation of blood pressure in response to signaling via G protein-coupled receptors and GNAQ. Plays a role in regulating the constriction and relaxation of vascular smooth muscle (By similarity). Binds EIF2B5 and blocks its activity, thereby inhibiting the translation of mRNA into protein (PubMed:19736320).

组织特异性

Expressed in acute myelogenous leukemia (AML) and in acute lymphoblastic leukemia (ALL).

序列相似性

Contains 1 RGS domain.

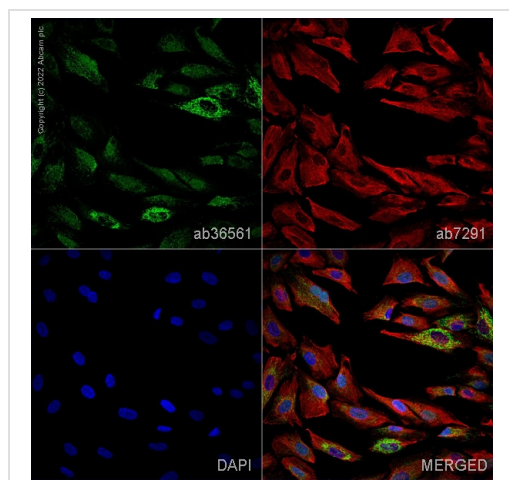
翻译后修饰

Phosphorylated by protein kinase C. Phosphorylation by PRKG1 leads to activation of RGS2 activity.

细胞定位

Cell membrane. Mitochondrion and Cell membrane. Cytoplasm. Nucleus, nucleolus.

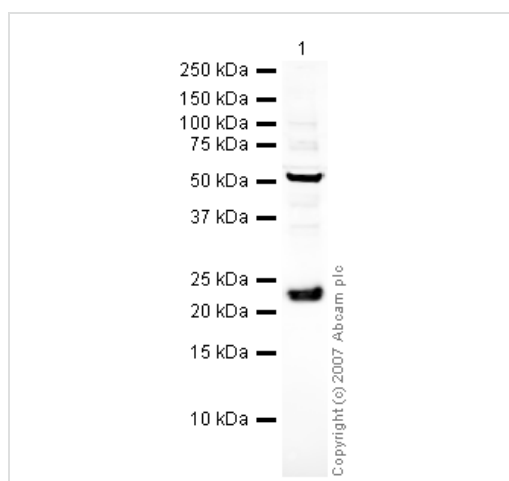
图片



Immunocytochemistry/ Immunofluorescence - Anti-RGS2 antibody (ab36561)

ab36561 staining RGS2 in SKNSH cells. The cells were fixed with 4% paraformaldehyde (10 min), permeabilized with 0.1% PBS-Tween for 5 minutes and then blocked with 1% BSA/10% normal goat serum/0.3M glycine in 0.1%PBS-Tween for 1h. The cells were then incubated overnight at 4°C with ab36561 at 1µg/ml and **ab7291**, Mouse monoclonal [DM1A] to alpha Tubulin - Loading Control. Cells were then incubated with **ab150081**, Goat polyclonal Secondary Antibody to Rabbit IgG - H&L (Alexa Fluor® 488), pre-adsorbed at 1/1000 dilution (shown in green) and **ab150120**, Goat polyclonal Secondary Antibody to Mouse IgG - H&L (Alexa Fluor® 594), pre-adsorbed at 1/1000 dilution (shown in pseudocolour red). Nuclear DNA was labelled with DAPI (shown in blue).

Image was acquired with a high-content analyser (Operetta CLS, Perkin Elmer) and a maximum intensity projection of confocal sections is shown.



Western blot - Anti-RGS2 antibody (ab36561)

Anti-RGS2 antibody (ab36561) at 1 µg/ml + Human brain tissue lysate - total protein (**ab29466**) at 10 µg

### Secondary

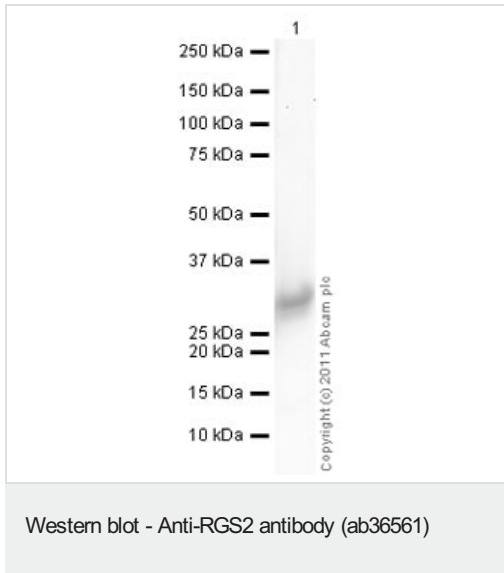
IRDye 680 Conjugated Goat Anti-Rabbit IgG (H+L) at 1/10000 dilution

Performed under reducing conditions.

**Predicted band size:** 24 kDa

**Observed band size:** 23 kDa

**Additional bands at:** 51 kDa (possible cross reactivity)



**Please note:** All products are "FOR RESEARCH USE ONLY. NOT FOR USE IN DIAGNOSTIC PROCEDURES"

### Our Abpromise to you: Quality guaranteed and expert technical support

---

- Replacement or refund for products not performing as stated on the datasheet
- Valid for 12 months from date of delivery
- Response to your inquiry within 24 hours
- We provide support in Chinese, English, French, German, Japanese and Spanish
- Extensive multi-media technical resources to help you
- We investigate all quality concerns to ensure our products perform to the highest standards

If the product does not perform as described on this datasheet, we will offer a refund or replacement. For full details of the Abpromise, please visit <https://www.abcam.cn/abpromise> or contact our technical team.

### Terms and conditions

---

- Guarantee only valid for products bought direct from Abcam or one of our authorized distributors