

Anti-RFXAP antibody [RFXAD55A] ab51376

1 图像

概述

| | |
|--------------|---|
| 产品名称 | Anti-RFXAP抗体[RFXAD55A] |
| 描述 | 小鼠单克隆抗体[RFXAD55A] to RFXAP |
| 宿主 | Mouse |
| 经测试应用 | 适用于: WB |
| 种属反应性 | 与反应: Human |
| 免疫原 | Recombinant fragment, corresponding to internal sequence amino acids 50-200 of Human RFXAP |
| 阳性对照 | HeLa whole cell lysate |
| 常规说明 | <p>The Life Science industry has been in the grips of a reproducibility crisis for a number of years. Abcam is leading the way in addressing this with our range of recombinant monoclonal antibodies and knockout edited cell lines for gold-standard validation. Please check that this product meets your needs before purchasing.</p> <p>If you have any questions, special requirements or concerns, please send us an inquiry and/or contact our Support team ahead of purchase. Recommended alternatives for this product can be found below, along with publications, customer reviews and Q&As</p> |

性能

| | |
|-------------|--|
| 形式 | Liquid |
| 存放说明 | Shipped at 4°C. Store at +4°C short term (1-2 weeks). Upon delivery aliquot. Store at -20°C long term. |
| 存储溶液 | pH: 7.40 Preservative: 0.05% Sodium azide Constituents: 1% BSA, PBS |
| 纯度 | Protein G purified |
| 纯化说明 | Filtered through a 0.22 µm membrane. |
| 克隆 | 单克隆 |
| 克隆编号 | RFXAD55A |
| 同种型 | IgG1 |

应用

The Abpromise guarantee

Abpromise™ 承诺保证使用 ab51376 于以下的经测试应用

“应用说明”部分 下显示的仅为推荐的起始稀释度;实际最佳的稀释度/浓度应由使用者检定。

| 应用 | Ab评论 | 说明 |
|----|------|---|
| WB | | 1/100. Detects a band of approximately 30 kDa (predicted molecular weight: 28 kDa). |

靶标

功能

Part of the RFX complex that binds to the X-box of MHC II promoters.

组织特异性

Ubiquitous.

疾病相关

Defects in RFXAP are a cause of bare lymphocyte syndrome type 2 (BLS2) [MIM:209920]; also known as hereditary MHC class II deficiency or HLA class II-deficient combined immunodeficiency. BLS2 is a severe combined immunodeficiency disease with early onset. It is characterized by a profound defect in constitutive and interferon-gamma induced MHC II expression, absence of cellular and humoral T-cell response to antigen challenge, hypogammaglobulinemia and impaired antibody production. The consequence include extreme susceptibility to viral, bacterial and fungal infections.

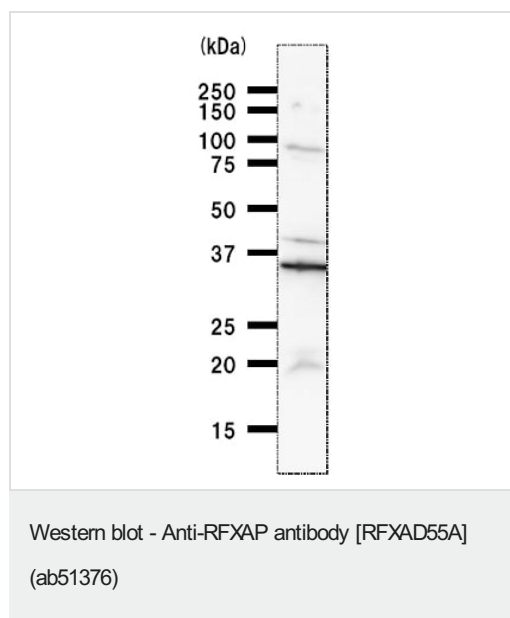
翻译后修饰

Phosphorylated.

细胞定位

Nucleus.

图片



Anti-RFXAP antibody [RFXAD55A] (ab51376) at 1/100 dilution +
HeLa whole cell lysate at 50 µg

Secondary

Anti mouse IgG antibody at 1/2500 dilution

Predicted band size: 28 kDa

Observed band size: 30 kDa

Please note: All products are "FOR RESEARCH USE ONLY. NOT FOR USE IN DIAGNOSTIC PROCEDURES"

Our Abpromise to you: Quality guaranteed and expert technical support

- Replacement or refund for products not performing as stated on the datasheet
- Valid for 12 months from date of delivery
- Response to your inquiry within 24 hours

- We provide support in Chinese, English, French, German, Japanese and Spanish
- Extensive multi-media technical resources to help you
- We investigate all quality concerns to ensure our products perform to the highest standards

If the product does not perform as described on this datasheet, we will offer a refund or replacement. For full details of the Abpromise, please visit <https://www.abcam.cn/abpromise> or contact our technical team.

Terms and conditions

- Guarantee only valid for products bought direct from Abcam or one of our authorized distributors