

Anti-RFC3 antibody ab154899

4 References 3 图像

概述	
产品名称	Anti-RFC3抗体
描述	兔多克隆抗体to RFC3
宿主	Rabbit
经测试应用	适用于: WB, IHC-P, ICC/IF
种属反应性	与反应: Human
免疫原	Recombinant fragment, corresponding to a region within amino acids 51-353 of Human RFC3 (Uniprot ID: P40938).
阳性对照	HeLa whole cell lysate; HeLa cells; Human gastric carcinoma tissue.
常规说明	<p>The Life Science industry has been in the grips of a reproducibility crisis for a number of years. Abcam is leading the way in addressing this with our range of recombinant monoclonal antibodies and knockout edited cell lines for gold-standard validation. Please check that this product meets your needs before purchasing.</p> <p>If you have any questions, special requirements or concerns, please send us an inquiry and/or contact our Support team ahead of purchase. Recommended alternatives for this product can be found below, along with publications, customer reviews and Q&As</p>
性能	
形式	Liquid
存放说明	Shipped at 4°C. Upon delivery aliquot. Store at -20°C or -80°C. Avoid freeze / thaw cycle.
存储溶液	pH: 7.00 Preservative: 0.01% Thimerosal (merthiolate) Constituents: 1.21% Tris, 0.75% Glycine, 20% Glycerol (glycerin, glycerine)
纯度	Immunogen affinity purified
克隆	多克隆
同种型	IgG
应用	

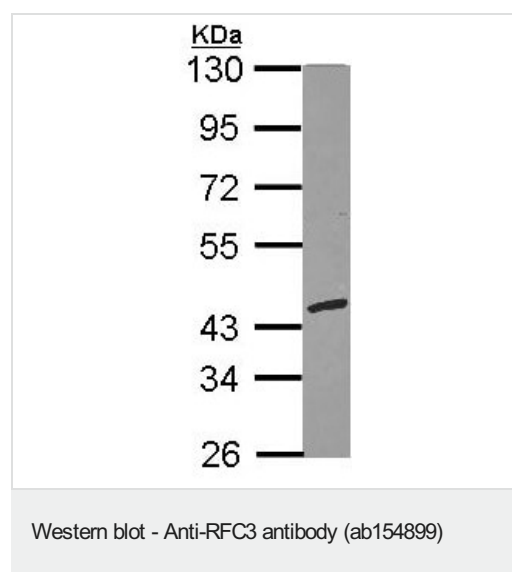
“应用说明”部分 下显示的仅为推荐的起始稀释度;实际最佳的稀释度/浓度应由使用者检定。

应用	Ab评论	说明
WB		1/500 - 1/3000. Predicted molecular weight: 41 kDa.
IHC-P		1/100 - 1/1000. Perform heat mediated antigen retrieval with citrate buffer pH 6 before commencing with IHC staining protocol. Alternatively antigen retrieval using heat mediated Tris/EDTA buffer (pH 8.0) may be used.
ICC/IF		1/100 - 1/1000.

靶标

功能	The elongation of primed DNA templates by DNA polymerase delta and epsilon requires the action of the accessory proteins proliferating cell nuclear antigen (PCNA) and activator 1.
序列相似性	Belongs to the activator 1 small subunits family.
翻译后修饰	Phosphorylated upon DNA damage, probably by ATM or ATR.
细胞定位	Nucleus.

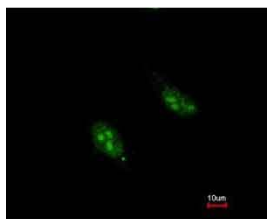
图片



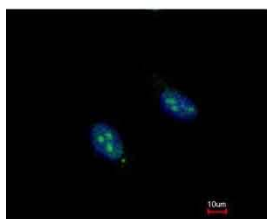
Anti-RFC3 antibody (ab154899) at 1/1000 dilution + HeLa whole cell lysate at 30 µg

Predicted band size: 41 kDa

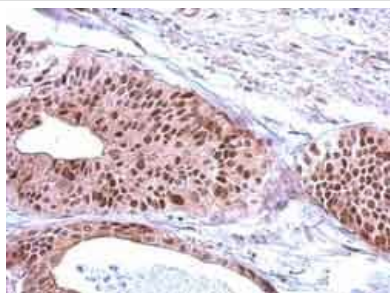
10% SDS PAGE



Immunofluorescent analysis of paraformaldehyde-fixed HeLa cells labeling RFC3 with ab154899 at 1/200 dilution. Lower image shows cells co-stained with Hoechst 33342.



Immunocytochemistry/ Immunofluorescence - Anti-RFC3 antibody (ab154899)



Immunohistochemical analysis of formalin-fixed, paraffin-embedded Human gastric carcinoma tissue labeling RFC3 with ab154899 at 1/500 dilution.

Immunohistochemistry (Formalin/PFA-fixed paraffin-embedded sections) - Anti-RFC3 antibody (ab154899)

Please note: All products are "FOR RESEARCH USE ONLY. NOT FOR USE IN DIAGNOSTIC PROCEDURES"

Our Abpromise to you: Quality guaranteed and expert technical support

- Replacement or refund for products not performing as stated on the datasheet
- Valid for 12 months from date of delivery
- Response to your inquiry within 24 hours
- We provide support in Chinese, English, French, German, Japanese and Spanish

- Extensive multi-media technical resources to help you
- We investigate all quality concerns to ensure our products perform to the highest standards

If the product does not perform as described on this datasheet, we will offer a refund or replacement. For full details of the Abpromise, please visit <https://www.abcam.cn/abpromise> or contact our technical team.

Terms and conditions

- Guarantee only valid for products bought direct from Abcam or one of our authorized distributors