

Anti-Respiratory Syncytial Virus M2-1 Protein antibody [RSV5H5] ab94805

[10 References](#) [1 图像](#)

概述

产品名称	Anti-Respiratory Syncytial Virus M2-1蛋白抗体[RSV5H5]
描述	小鼠单克隆抗体[RSV5H5] to Respiratory Syncytial Virus M2-1蛋白
宿主	Mouse
特异性	This antibody has broad specificity for Respiratory Syncytial Virus of both sub-groups A and B
经测试应用	适用于: ELISA, WB, IP, ICC/IF
种属反应性	与反应: Respiratory syncytial virus
免疫原	Tissue, cells or virus corresponding to Respiratory Syncytial Virus M2-1 Protein. Respiratory Syncytial Virus strain A2 infected HeLa cells.
常规说明	<p>Fusion partner: PS-NS/1-Ag4 Recommended growth conditions: Growth medium RPMI with 25mM Hepes, 2mM additional glutamine and 10% heat inactivated foetal calf serum</p> <p>The Life Science industry has been in the grips of a reproducibility crisis for a number of years. Abcam is leading the way in addressing this with our range of recombinant monoclonal antibodies and knockout edited cell lines for gold-standard validation. Please check that this product meets your needs before purchasing.</p> <p>If you have any questions, special requirements or concerns, please send us an inquiry and/or contact our Support team ahead of purchase. Recommended alternatives for this product can be found below, along with publications, customer reviews and Q&As</p>

性能

形式	Liquid
存放说明	Shipped at 4°C. Upon delivery aliquot and store at -20°C or -80°C. Avoid repeated freeze / thaw cycles.
存储溶液	Preservative: 0.02% Sodium azide Constituent: 99.98% PBS
纯度	Protein A purified
克隆	单克隆
克隆编号	RSV5H5
同种型	IgG1

应用

The Abpromise guarantee **Abpromise™**承诺保证使用ab94805于以下的经测试应用

“应用说明”部分 下显示的仅为推荐的起始稀释度;实际最佳的稀释度/浓度应由使用者检定。

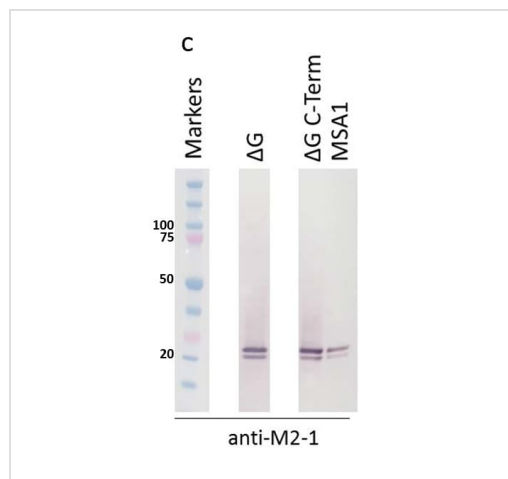
应用	Ab评论	说明
ELISA		Use at an assay dependent concentration.
WB		Use at an assay dependent concentration. Predicted molecular weight: 22 kDa.
IP		Use at an assay dependent concentration.
ICC/IF		Use at an assay dependent concentration. on Acetone fixed or Paraffin embedded samples.

靶标

相关性 The M2-1 protein is an essential element in the RSV replication complex.

细胞定位 viral envelope

图片



Western blot - Anti-Respiratory Syncytial Virus M2-1 Protein antibody [RSV5H5] (ab94805)

Jeong et al PLoS One. 2015 Jun 24;10(6):e0130517. doi: 10.1371/journal.pone.0130517. eCollection 2015. S1 File. Reproduced under the Creative Commons license <http://creativecommons.org/licenses/by/4.0/>

RSV mutants show expected patterns of G, F, and M2-1 expression.

Western blotting of Vero cell lysates infected with RSV ΔG, ΔG C-term, and wild type (MSA1).

(**Figure C shown**) Detection of M2-1 using anti-M2-1 antibody ab94805.

Cell lysates from virus cultures grown for 6 days on Vero cells were subjected to SDS-PAGE, transferred to membranes and probed with anti-M2-1 antibody (Abcam, ab94805), and incubated with a secondary goat anti-mouse alkaline phosphatase conjugate. Anti-G western blot was done with rabbit anti-RSV-G polyclonal and incubated with goat anti-rabbit secondary antibody (Abcam, **ab97048**). Bands were visualized using BCIP/NBT. The molecular weight marker used was Precision Plus Protein Dual Color Standards.

Our Abpromise to you: Quality guaranteed and expert technical support

- Replacement or refund for products not performing as stated on the datasheet
- Valid for 12 months from date of delivery
- Response to your inquiry within 24 hours

- We provide support in Chinese, English, French, German, Japanese and Spanish
- Extensive multi-media technical resources to help you
- We investigate all quality concerns to ensure our products perform to the highest standards

If the product does not perform as described on this datasheet, we will offer a refund or replacement. For full details of the Abpromise, please visit <https://www.abcam.cn/abpromise> or contact our technical team.

Terms and conditions

- Guarantee only valid for products bought direct from Abcam or one of our authorized distributors