

Anti-RELM beta antibody ab197361

2 图像

概述

产品名称	Anti-RELM beta抗体
描述	兔多克隆抗体to RELM beta
宿主	Rabbit
经测试应用	适用于: IHC-P
种属反应性	与反应: Human
免疫原	Recombinant fragment (GST-tag) corresponding to Human RELM beta (internal sequence). (BC113502). Database link: Q9BQ08
阳性对照	Human cervical cancer tissue; Human colon cancer tissue.
常规说明	<p>The Life Science industry has been in the grips of a reproducibility crisis for a number of years. Abcam is leading the way in addressing this with our range of recombinant monoclonal antibodies and knockout edited cell lines for gold-standard validation. Please check that this product meets your needs before purchasing.</p> <p>If you have any questions, special requirements or concerns, please send us an inquiry and/or contact our Support team ahead of purchase. Recommended alternatives for this product can be found below, along with publications, customer reviews and Q&As</p>

性能

形式	Liquid
存放说明	Shipped at 4°C. Store at +4°C short term (1-2 weeks). Upon delivery aliquot. Store at -20°C long term. Avoid freeze / thaw cycle.
存储溶液	pH: 7.4 Preservative: 0.05% Sodium azide Constituents: 49% PBS, 50% Glycerol (glycerin, glycerine)
纯度	Immunogen affinity purified
克隆	多克隆
同种型	IgG

应用

The Abpromise guarantee

Abpromise™ 承诺保证使用ab197361于以下的经测试应用

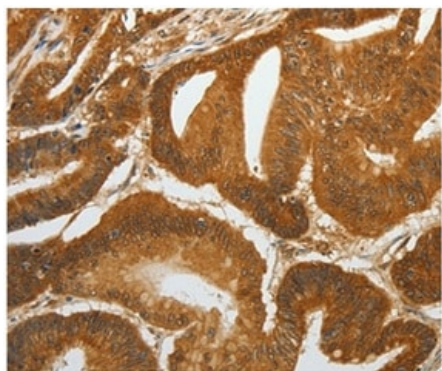
“应用说明”部分 下显示的仅为推荐的起始稀释度;实际最佳的稀释度/浓度应由使用者检定。

应用	Ab评论	说明
IHC-P		1/40 - 1/200.

靶标

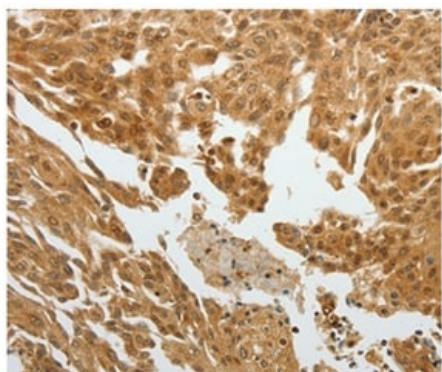
功能	Probable hormone.
组织特异性	Expressed only in the gastrointestinal tract, particularly the colon.
序列相似性	Belongs to the resistin/FIZZ family.
细胞定位	Secreted.

图片



Immunohistochemical analysis of paraffin-embedded Human colon cancer tissue labeling RELM beta with ab197361 at 1/40 dilution

Immunohistochemistry (Formalin/PFA-fixed paraffin-embedded sections) - Anti-RELM beta antibody (ab197361)



Immunohistochemical analysis of paraffin-embedded Human cervical cancer tissue labeling RELM beta with ab197361 at 1/40 dilution.

Immunohistochemistry (Formalin/PFA-fixed paraffin-embedded sections) - Anti-RELM beta antibody (ab197361)

Please note: All products are "FOR RESEARCH USE ONLY. NOT FOR USE IN DIAGNOSTIC PROCEDURES"

Our Abpromise to you: Quality guaranteed and expert technical support

- Replacement or refund for products not performing as stated on the datasheet
- Valid for 12 months from date of delivery
- Response to your inquiry within 24 hours
- We provide support in Chinese, English, French, German, Japanese and Spanish
- Extensive multi-media technical resources to help you
- We investigate all quality concerns to ensure our products perform to the highest standards

If the product does not perform as described on this datasheet, we will offer a refund or replacement. For full details of the Abpromise, please visit <https://www.abcam.cn/abpromise> or contact our technical team.

Terms and conditions

- Guarantee only valid for products bought direct from Abcam or one of our authorized distributors