

### Anti-RCL antibody [EPR8685] ab150413

**重组 RabMAb**

#### 4 图像

#### 概述

产品名称	Anti-RCL抗体[EPR8685]
描述	兔单克隆抗体[EPR8685] to RCL
宿主	Rabbit
经测试应用	<b>适用于:</b> WB, IHC-P
种属反应性	<b>与反应:</b> Human
免疫原	Synthetic peptide within Human RCL. The exact sequence is proprietary.
阳性对照	K562, Jurkat, HepG2 and 293T cell lysates, Human breast carcinoma and Human kidney tissues
常规说明	<p>This product is a recombinant monoclonal antibody, which offers several advantages including:</p> <ul style="list-style-type: none"> <li>- High batch-to-batch consistency and reproducibility</li> <li>- Improved sensitivity and specificity</li> <li>- Long-term security of supply</li> <li>- Animal-free production</li> </ul> <p>For more information <a href="#">see here</a>.</p> <p>Our RabMAb<sup>®</sup> technology is a patented hybridoma-based technology for making rabbit monoclonal antibodies. For details on our patents, please refer to <a href="#">RabMAb<sup>®</sup> patents</a>.</p> <p>Mouse, Rat: We have preliminary internal testing data to indicate this antibody may not react with these species. Please contact us for more information.</p>

#### 性能

形式	Liquid
存放说明	Shipped at 4°C. Upon delivery aliquot and store at -20°C. Avoid freeze / thaw cycles.
存储溶液	<p>pH: 7.2</p> <p>Preservative: 0.01% Sodium azide</p> <p>Constituents: 9% PBS, 40% Glycerol (glycerin, glycerine), 0.05% BSA, 50% Tissue culture supernatant</p>
纯度	Protein A purified
克隆	单克隆
克隆编号	EPR8685

## 应用

## The Abpromise guarantee

Abpromise™承诺保证使用ab150413于以下的经测试应用

“应用说明”部分 下显示的仅为推荐的起始稀释度;实际最佳的稀释度/浓度应由使用者检定。

应用	Ab评论	说明
WB		1/1000 - 1/10000. Detects a band of approximately 23 kDa (predicted molecular weight: 19 kDa).
IHC-P		1/100 - 1/250. Perform heat mediated antigen retrieval before commencing with IHC staining protocol.

## 靶标

## 功能

Catalyzes the cleavage of the N-glycosidic bond of deoxyribonucleoside 5'-monophosphates to yield deoxyribose 5-phosphate and a purine or pyrimidine base. Deoxyribonucleoside 5'-monophosphates containing purine bases are preferred to those containing pyrimidine bases.

## 组织特异性

Expressed at low levels in brain, colon, lung, peripheral blood leukocytes, placenta, small intestine, and thymus. Expressed at high levels in heart, kidney, liver, skeletal muscle and spleen. Overexpressed in a significant proportion of breast cancers.

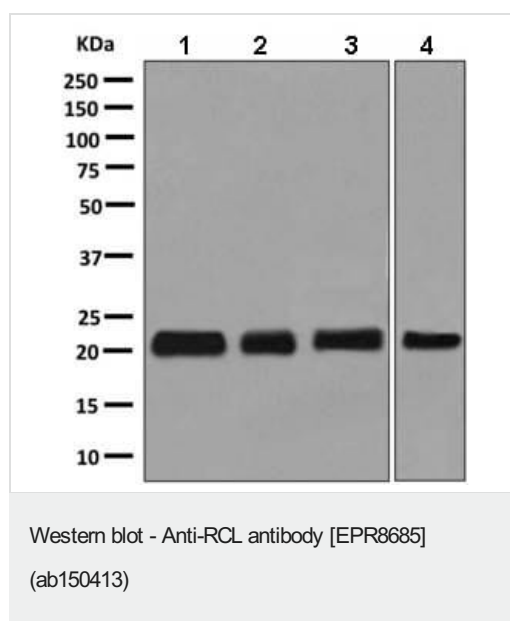
## 序列相似性

Belongs to the deoxyribonucleoside 5'-monophosphate N-glycosidase family.

## 细胞定位

Nucleus. Cytoplasm.

## 图片



**All lanes** : Anti-RCL antibody [EPR8685] (ab150413) at 1/1000 dilution

**Lane 1** : K562 cell lysate

**Lane 2** : Jurkat cell lysate

**Lane 3** : HepG2 cell lysate

**Lane 4** : 293T cell lysate

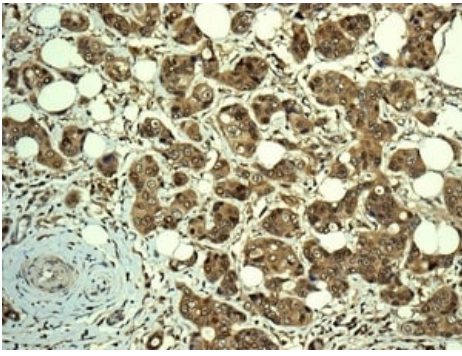
Lysates/proteins at 10 µg per lane.

## Secondary

**All lanes** : HRP labelled goat anti-rabbit at 1/2000 dilution

**Predicted band size:** 19 kDa

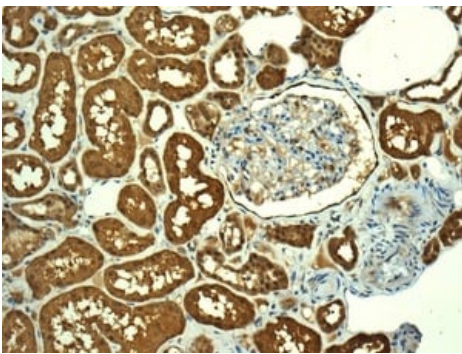
**Observed band size:** 23 kDa



Immunohistochemical analysis of paraffin embedded Human breast carcinoma tissue labelling RCL with ab150413 antibody at a dilution of 1/100.

Perform heat mediated antigen retrieval before commencing with IHC staining protocol.

Immunohistochemistry (Formalin/PFA-fixed paraffin-embedded sections) - Anti-RCL antibody [EPR8685] (ab150413)



Immunohistochemical analysis of paraffin embedded Human kidney tissue labelling RCL with ab150413 antibody at a dilution of 1/100.

Perform heat mediated antigen retrieval before commencing with IHC staining protocol.

Immunohistochemistry (Formalin/PFA-fixed paraffin-embedded sections) - Anti-RCL antibody [EPR8685] (ab150413)

### Why choose a recombinant antibody?



**Research with confidence**  
Consistent and reproducible results



**Long-term and scalable supply**  
Recombinant technology



**Success from the first experiment**  
Confirmed specificity



**Ethical standards compliant**  
Animal-free production

Anti-RCL antibody [EPR8685] (ab150413)

**Please note:** All products are "FOR RESEARCH USE ONLY. NOT FOR USE IN DIAGNOSTIC PROCEDURES"

## **Our Abpromise to you: Quality guaranteed and expert technical support**

---

- Replacement or refund for products not performing as stated on the datasheet
- Valid for 12 months from date of delivery
- Response to your inquiry within 24 hours
  
- We provide support in Chinese, English, French, German, Japanese and Spanish
- Extensive multi-media technical resources to help you
- We investigate all quality concerns to ensure our products perform to the highest standards

If the product does not perform as described on this datasheet, we will offer a refund or replacement. For full details of the Abpromise, please visit <https://www.abcam.cn/abpromise> or contact our technical team.

## **Terms and conditions**

---

- Guarantee only valid for products bought direct from Abcam or one of our authorized distributors