


Anti-RC3H1 antibody ab70195

3 图像

概述	
产品名称	Anti-RC3H1抗体
描述	兔多克隆抗体to RC3H1
宿主	Rabbit
经测试应用	适用于: WB, IP
种属反应性	与反应: Mouse, Human 预测可用于: Horse, Pig, Chimpanzee, Rhesus monkey, Gorilla, Chinese hamster, Orangutan, Elephant 
免疫原	Synthetic peptide corresponding to a region between residues 500 and 550 of human RC3H1
阳性对照	WB: HeLa and 293T whole cell lysates; TCMK-1, 4T1, CT25.WT IP: HeLa whole cell lysate.
常规说明	<p>The Life Science industry has been in the grips of a reproducibility crisis for a number of years. Abcam is leading the way in addressing this with our range of recombinant monoclonal antibodies and knockout edited cell lines for gold-standard validation. Please check that this product meets your needs before purchasing.</p> <p>If you have any questions, special requirements or concerns, please send us an inquiry and/or contact our Support team ahead of purchase. Recommended alternatives for this product can be found below, along with publications, customer reviews and Q&amp;As</p>
性能	
形式	Liquid
存放说明	Shipped at 4°C. Upon delivery aliquot and store at -20°C. Avoid freeze / thaw cycles.
存储溶液	pH: 7 Preservative: 0.09% Sodium azide Constituents: 1.815% Tris, 1.764% Sodium citrate, 0.021% PBS
纯度	Immunogen affinity purified
纯化说明	ab70195 was affinity purified using an epitope specific to RC3H1 immobilized on solid support.
克隆	多克隆
同种型	IgG

**The Abpromise guarantee**      **Abpromise™**承诺保证使用ab70195于以下的经测试应用

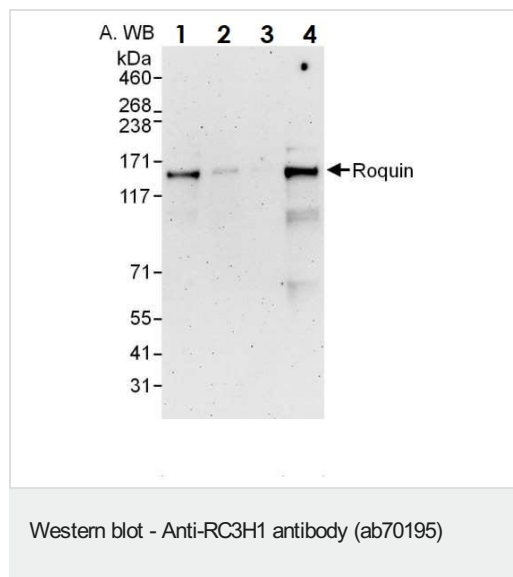
“应用说明”部分 下显示的仅为推荐的起始稀释度;实际最佳的稀释度/浓度应由使用者检定。

应用	Ab评论	说明
<b>WB</b>		1/500 - 1/5000. Detects a band of approximately 150 kDa (predicted molecular weight: 126 kDa).
<b>IP</b>		Use at 2-5 µg/mg of lysate.

**靶标**

<b>功能</b>	Represses ICOS function, an essential costimulatory receptor for follicular T-cells. May act as an ubiquitin ligase that regulates ubiquitin-dependent control of AU-rich mRNAs by AUF1/HNRPD and HUR/ELAVL1.
<b>组织特异性</b>	Widely expressed. Expressed at higher level in cerebellum, spleen, ovary and liver.
<b>序列相似性</b>	Contains 1 C3H1-type zinc finger. Contains 1 RING-type zinc finger.
<b>细胞定位</b>	Cytoplasm. Localizes to cytosolic RNA granules, which are sites for regulating mRNA translation and decay, suggesting that it may bind RNA.

**图片**



**All lanes :** Anti-RC3H1 antibody (ab70195) at 0.1 µg/ml

**Lane 1 :** HeLa whole cell lysate at 50 µg

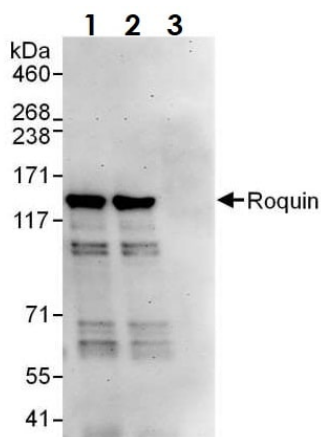
**Lane 2 :** HeLa whole cell lysate at 15 µg

**Lane 3 :** HeLa whole cell lysate at 5 µg

**Lane 4 :** HEK293T whole cell lysate at 50 µg

**Predicted band size:** 126 kDa

**Exposure time:** 3 minutes



Immunoprecipitation - Anti-RC3H1 antibody  
(ab70195)

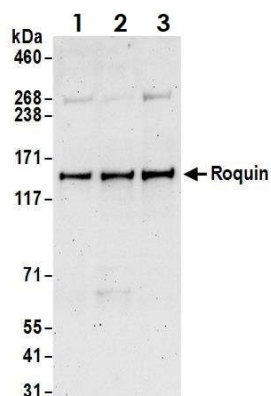
RC3H1 was immunoprecipitated from HeLa whole cell lysate (1 mg per IP reaction, 20% loaded) with ab70195 at 6 µg per reaction. Western blot was performed on the immunoprecipitate using ab70195 at 0.1 µg/mL.

Lane 1: ab70195 IP in HeLa whole cell lysate.

Lane 2: ab70195 IP in HeLa whole cell lysate.

Lane 3: Control IgG in HeLa whole cell lysate.

Detection: Chemiluminescence with an exposure time of 3 minutes



Western blot - Anti-RC3H1 antibody (ab70195)

**All lanes :** Anti-RC3H1 antibody (ab70195) at 2 µg/ml

**Lane 1 :** TCMK-1 (mouse kidney epithelial cell line) whole cell lysate

**Lane 2 :** 4T1 (Mouse mammary gland carcinoma cell line) whole cell lysate

**Lane 3 :** CT26.WT (Murine Colon Carcinoma) whole cell lysate

Lysates/proteins at 50 µg per lane.

**Predicted band size:** 126 kDa

**Exposure time:** 3 minutes

**Please note:** All products are "FOR RESEARCH USE ONLY. NOT FOR USE IN DIAGNOSTIC PROCEDURES"

#### Our Abpromise to you: Quality guaranteed and expert technical support

- Replacement or refund for products not performing as stated on the datasheet
- Valid for 12 months from date of delivery
- Response to your inquiry within 24 hours

- We provide support in Chinese, English, French, German, Japanese and Spanish
- Extensive multi-media technical resources to help you
- We investigate all quality concerns to ensure our products perform to the highest standards

If the product does not perform as described on this datasheet, we will offer a refund or replacement. For full details of the Abpromise, please visit <https://www.abcam.cn/abpromise> or contact our technical team.

#### **Terms and conditions**

---

- Guarantee only valid for products bought direct from Abcam or one of our authorized distributors