

Anti-RBP1 antibody ab104452

★★★★★ [1 Abreviews](#) [4 图像](#)

概述

产品名称	Anti-RBP1抗体
描述	山羊多克隆抗体to RBP1
宿主	Goat
经测试应用	适用于: WB, IHC-P
种属反应性	与反应: Mouse, Human
免疫原	Synthetic peptide: VEGVVCKQVFKKVQ conjugated to KLH, corresponding to C terminal amino acids 122-135 of Human RBP1. Run BLAST with Run BLAST with

常规说明

The Life Science industry has been in the grips of a reproducibility crisis for a number of years. Abcam is leading the way in addressing this with our range of recombinant monoclonal antibodies and knockout edited cell lines for gold-standard validation. Please check that this product meets your needs before purchasing.

If you have any questions, special requirements or concerns, please send us an inquiry and/or contact our Support team ahead of purchase. Recommended alternatives for this product can be found below, along with publications, customer reviews and Q&As

性能

形式	Liquid
存放说明	Shipped at 4°C. Store at +4°C short term (1-2 weeks). Upon delivery aliquot. Store at -20°C long term.
存储溶液	pH: 7.30 Preservative: 0.02% Sodium azide Constituents: 0.5% BSA, Tris buffered saline
纯度	Immunogen affinity purified
克隆	多克隆
同种型	IgG

应用

The Abpromise guarantee

Abpromise™ 承诺保证使用 ab104452 于以下的经测试应用

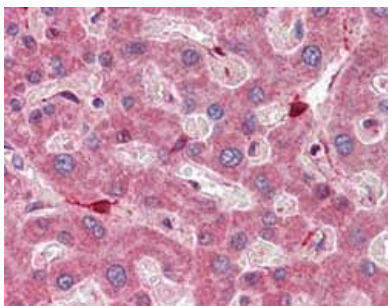
“应用说明”部分 下显示的仅为推荐的起始稀释度;实际最佳的稀释度/浓度应由使用者检定。

应用	Ab评论	说明
WB		Use a concentration of 0.1 - 0.3 µg/ml. Predicted molecular weight: 16 kDa.
IHC-P	★★★★★ (1)	Use a concentration of 5 µg/ml. Perform heat mediated antigen retrieval with citrate buffer pH 6 before commencing with IHC staining protocol.

靶标

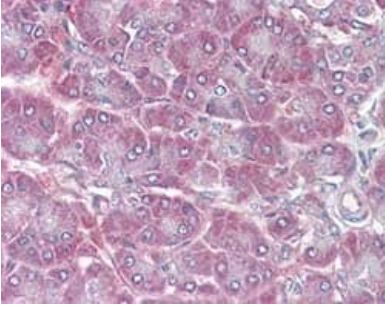
功能	Intracellular transport of retinol.
组织特异性	Detected in nearly all the tissues with higher expression in adult ovary, pancreas, pituitary gland and adrenal gland, and fetal liver.
序列相似性	Belongs to the calycin superfamily. Fatty-acid binding protein (FABP) family.
结构域	Forms a beta-barrel structure that accommodates hydrophobic ligands in its interior.
细胞定位	Cytoplasm.

图片



ab104452, at 5 µg/ml, staining RBP1 in formalin-fixed, paraffin-embedded Human Liver by Immunohistochemistry, followed by biotinylated anti-goat IgG secondary antibody, alkaline phosphatase-streptavidin and chromogen.

Immunohistochemistry (Formalin/PFA-fixed paraffin-embedded sections) - Anti-RBP1 antibody (ab104452)



Immunohistochemistry (Formalin/PFA-fixed paraffin-embedded sections) - Anti-RBP1 antibody (ab104452)

ab104452, at 5 µg/ml, staining RBP1 in formalin-fixed, paraffin-embedded Human Pancreas by Immunohistochemistry, followed by biotinylated anti-goat IgG secondary antibody, alkaline phosphatase-streptavidin and chromogen.



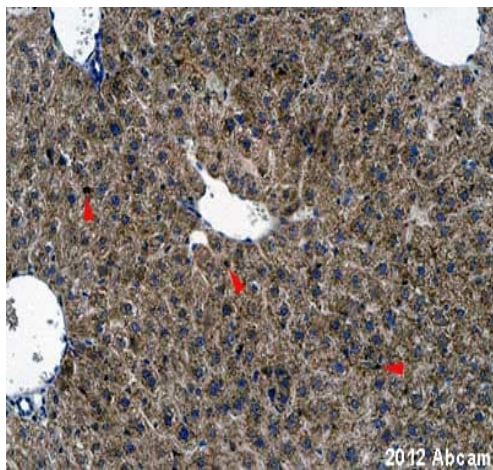
Western blot - Anti-RBP1 antibody (ab104452)

Anti-RBP1 antibody (ab104452) at 0.1 µg/ml + NIH 3T3 lysate (in RIPA buffer) at 35 µg

Developed using the ECL technique.

Predicted band size: 16 kDa

Primary incubation was 1 hour.



Immunohistochemistry (Formalin/PFA-fixed paraffin-embedded sections) - Anti-RBP1 antibody (ab104452)

This image is courtesy of an Abreview submitted by Carl Hobbs

ab104452 staining mouse liver sections by IHC-P. The tissue was fixed with formaldehyde and a heat mediated antigen retrieval step was performed with citric acid pH 6. Blocking of the sample was done with 1% BSA for 10 minutes at 21°C, followed by staining with ab104452 at 1/100 in TBS/BSA/azide for 2h at 21°C. A biotinylated rabbit anti-goat polyclonal antibody at 1/250 was used as the secondary antibody. Red arrowheads indicate strongly stained Kupffer cells.

Please note: All products are "FOR RESEARCH USE ONLY. NOT FOR USE IN DIAGNOSTIC PROCEDURES"

Our Abpromise to you: Quality guaranteed and expert technical support

- Replacement or refund for products not performing as stated on the datasheet
- Valid for 12 months from date of delivery
- Response to your inquiry within 24 hours

- We provide support in Chinese, English, French, German, Japanese and Spanish
- Extensive multi-media technical resources to help you
- We investigate all quality concerns to ensure our products perform to the highest standards

If the product does not perform as described on this datasheet, we will offer a refund or replacement. For full details of the Abpromise, please visit <https://www.abcam.cn/abpromise> or contact our technical team.

Terms and conditions

- Guarantee only valid for products bought direct from Abcam or one of our authorized distributors