

### Anti-RBM3 antibody [EPR6061(2)] ab134946

敲除验证
重组
RabMAb

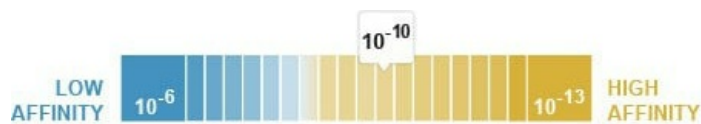
★★★★★
[5 Abreviews](#)
[11 References](#)
[9 图像](#)

#### 概述

<b>产品名称</b>	Anti-RBM3抗体[EPR6061(2)]
<b>描述</b>	兔单克隆抗体[EPR6061(2)] to RBM3
<b>宿主</b>	Rabbit
<b>经测试应用</b>	<b>适用于:</b> Flow Cyt (Intra), WB, IHC-P, ICC/IF
<b>种属反应性</b>	<b>与反应:</b> Mouse, Rat, Human
<b>免疫原</b>	Synthetic peptide within Human RBM3 aa 100 to the C-terminus (C terminal). The exact sequence is proprietary. Database link: <a href="#">P98179</a> (Peptide available as <a href="#">ab188553</a> )
<b>阳性对照</b>	ICC/IF: NIH/3T3 cells; IHC-P: Rat and mouse liver, and human astrocytoma tissues; Flow Cyt (intra): HepG2 cells; WB: Jurkat, HeLa, Neuro-2a, HEK-293T, LnCap, NIH/3T3 and PC-12 whole cell lysates.
<b>常规说明</b>	This product is a recombinant monoclonal antibody, which offers several advantages including: <ul style="list-style-type: none"> <li>- High batch-to-batch consistency and reproducibility</li> <li>- Improved sensitivity and specificity</li> <li>- Long-term security of supply</li> <li>- Animal-free production</li> </ul> For more information <a href="#">see here</a> .  Our RabMAb <sup>®</sup> technology is a patented hybridoma-based technology for making rabbit monoclonal antibodies. For details on our patents, please refer to <a href="#">RabMAb<sup>®</sup> patents</a> .

#### 性能

<b>形式</b>	Liquid
<b>存放说明</b>	Shipped at 4°C. Store at +4°C short term (1-2 weeks). Upon delivery aliquot. Store at -20°C long term. Avoid freeze / thaw cycle.
<b>解离常数 (K<sub>D</sub>)</b>	K <sub>D</sub> = 1.50 x 10 <sup>-10</sup> M



[Learn more about Kp](#)

存储溶液	pH: 7.20 Preservative: 0.01% Sodium azide Constituents: 59% PBS, 40% Glycerol (glycerin, glycerine), 0.05% BSA
纯度	Protein A purified
克隆	单克隆
克隆编号	EPR6061(2)
同种型	IgG

## 应用

**The Abpromise guarantee**      **Abpromise™**承诺保证使用ab134946于以下的经测试应用

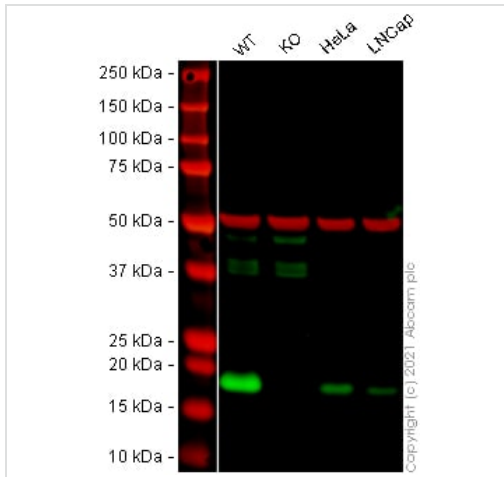
“应用说明”部分 下显示的仅为推荐的起始稀释度;实际最佳的稀释度/浓度应由使用者检定。

应用	Ab评论	说明
Flow Cyt (Intra)		1/20.
WB	★★★★★ (3)	1/1000 - 1/10000. Predicted molecular weight: 17 kDa.Can be blocked with <b>Human RBM3 peptide (ab188553)</b> .
IHC-P		1/300. Perform heat mediated antigen retrieval before commencing with IHC staining protocol. See <b><u>IHC antigen retrieval protocols</u></b> .
ICC/IF	★★★★★ (1)	1/100. For unpurified use at 1/250 - 1/500.

## 靶标

功能	Cold-inducible mRNA binding protein that enhances global protein synthesis at both physiological and mild hypothermic temperatures. Reduces the relative abundance of microRNAs, when overexpressed. Enhances phosphorylation of translation initiation factors and active polysome formation.
序列相似性	Contains 1 RRM (RNA recognition motif) domain.
翻译后修饰	Arg-105 is dimethylated, probably to asymmetric dimethylarginine. Phosphorylated.
细胞定位	Nucleus. Cytoplasm. Cell projection > dendrite. Localizes in mRNA granules in dendrites.

## 图片



Western blot - Anti-RBM3 antibody [EPR6061(2)]  
(ab134946)

**All lanes** : Anti-RBM3 antibody [EPR6061(2)] (ab134946) at 1/1000 dilution

**Lane 1** : Wild-type HEK-293T cell lysate

**Lane 2** : RBM3 Knockout HEK-293T cell lysate

**Lane 3** : HeLa cell lysate

**Lane 4** : LnCap cell lysate

Lysates/proteins at 20 µg per lane.

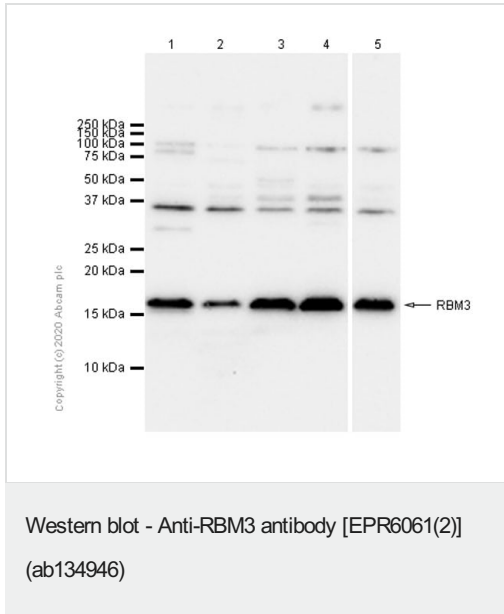
Performed under reducing conditions.

**Predicted band size:** 17 kDa

**Observed band size:** 18 kDa

**Lanes 1 - 4:** Merged signal (red and green). Green - ab134946 observed at 18 kDa. Red - loading control **ab7291** (Mouse anti-Alpha Tubulin [DM1A]) observed at 55 kDa.

ab134946 was shown to react with RBM3 in wild-type HEK-293T cells in Western blot with loss of signal observed in RBM3 knockout cell line **ab266663** (RBM3 knockout cell lysate **ab258170**). Wild-type HEK-293T and RBM3 knockout cell lysates were subjected to SDS-PAGE. Membranes were blocked in 3 % milk in TBS-T (0.1 % Tween<sup>®</sup>) before incubation with ab134946 and **ab7291** (Mouse anti-Alpha Tubulin [DM1A]) overnight at 4 °C at a 1 in 1000 dilution and a 1 in 20000 dilution respectively. Blots were incubated with Goat anti-Rabbit IgG H&L (IRDye<sup>®</sup> 800CW) preabsorbed (**ab216773**) and Goat anti-Mouse IgG H&L (IRDye<sup>®</sup> 680RD) preabsorbed (**ab216776**) secondary antibodies at 1 in 20000 dilution for 1 h at room temperature before imaging.



**All lanes :** Anti-RBM3 antibody [EPR6061(2)] (ab134946) at 1/1000 dilution (Purified)

**Lane 1 :** Jurkat (Human T cell leukemia T lymphocyte) whole cell lysate

**Lane 2 :** HeLa (Human cervix adenocarcinoma epithelial cell) whole cell lysate

**Lane 3 :** Neuro-2a (Mouse neuroblastoma neuroblast) whole cell lysate

**Lane 4 :** NIH/3T3 (Mouse embryonic fibroblast) whole cell lysate

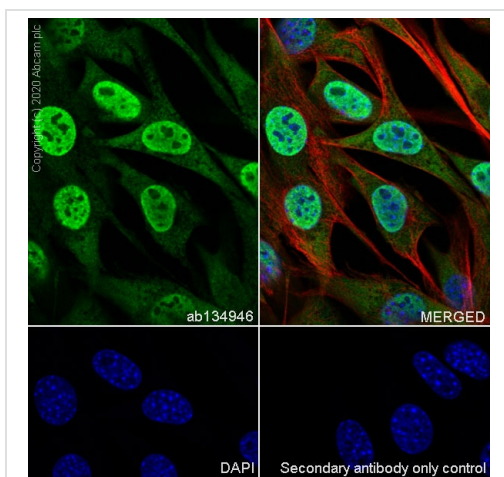
**Lane 5 :** PC-12 (Rat adrenal gland pheochromocytoma ) whole cell lysate

#### Secondary

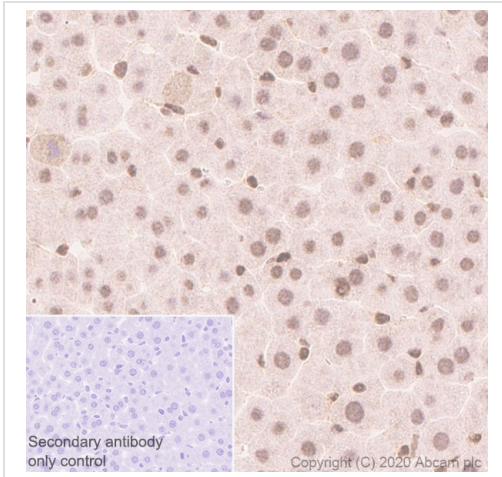
**All lanes :** Goat Anti-Rabbit IgG H&L (HRP) (**ab97051**) at 1/20000 dilution

**Predicted band size:** 17 kDa

We are unsure how to define the extra bands.

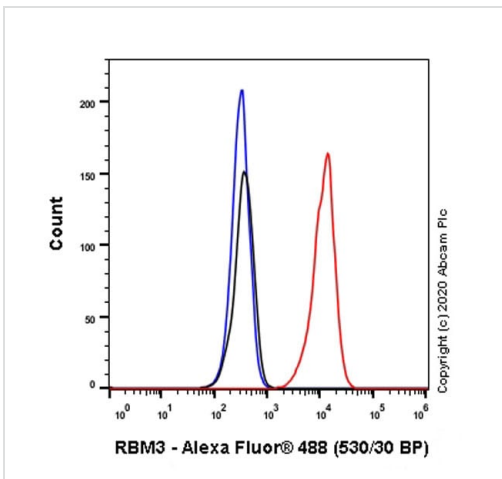


Immunocytochemistry analysis of NIH/3T3 (Mouse embryonic fibroblast) cells labeling RBM3 with Purified ab134946 at 1/100 dilution (1.32  $\mu\text{g}/\text{mL}$ ). Cells were fixed in 4% Paraformaldehyde and permeabilized with 0.1% tritonX-100. Cells were counterstained with Ab195889 Anti-alpha Tubulin antibody [DM1A] - Microtubule Marker (Alexa Fluor® 594) 1/200 dilution (2.5  $\mu\text{g}/\text{mL}$ ). Goat anti rabbit IgG (Alexa Fluor® 488, **ab150077**) was used as the secondary antibody at 1/1000 dilution (2  $\mu\text{g}/\text{mL}$ ). DAPI (blue) was used as nuclear counterstain. PBS instead of the primary antibody was used as the secondary antibody only control.



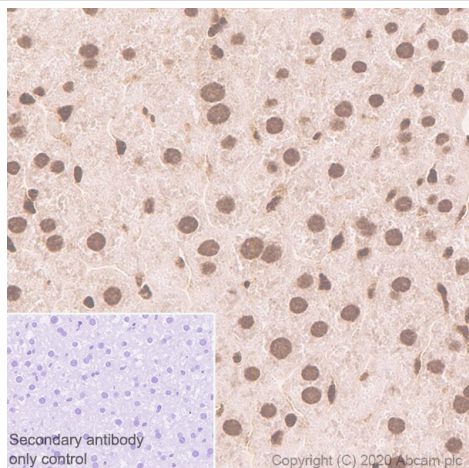
Immunohistochemistry (Formalin/PFA-fixed paraffin-embedded sections) analysis of rat liver tissue sections labeling RBM3 with Purified ab134946 at 1/300 dilution (0.44  $\mu\text{g}/\text{mL}$ ). Heat mediated antigen retrieval using Bond™ Epitope Retrieval Solution 2 (pH 9.0). Rabbit specific IHC polymer detection kit HRP/DAB (**ab209101**) was used as the secondary antibody. Negative control: PBS instead of the primary antibody. Hematoxylin was used as a counterstain.

Immunohistochemistry (Formalin/PFA-fixed paraffin-embedded sections) - Anti-RBM3 antibody [EPR6061(2)] (ab134946)



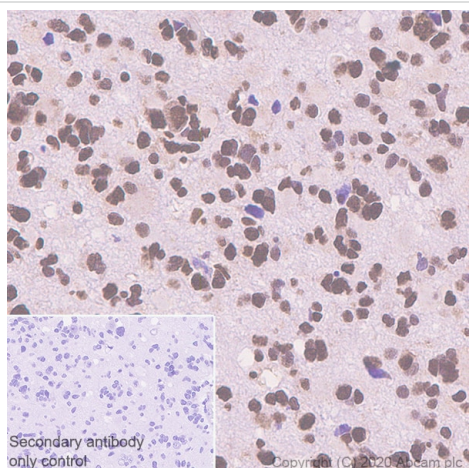
Intracellular Flow Cytometry analysis of HepG2 (Human hepatocellular carcinoma epithelial cell) cells labeling RBM3 with Purified ab134946 at 1/20 dilution (10  $\mu\text{g}/\text{mL}$ ) (Red). Cells were fixed with 4% Paraformaldehyde and permeabilised with 90% Methanol. A Goat anti rabbit IgG (Alexa Fluor® 488, **ab150077**) secondary antibody was used at 1/2000. Isotype control - Rabbit monoclonal IgG (Black). Unlabeled control - Cell without incubation with primary antibody and secondary antibody (Blue).

Flow Cytometry (Intracellular) - Anti-RBM3 antibody [EPR6061(2)] (ab134946)



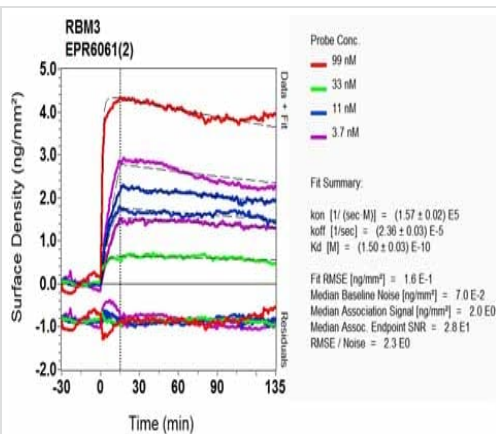
Immunohistochemistry (Formalin/PFA-fixed paraffin-embedded sections) - Anti-RBM3 antibody [EPR6061(2)] (ab134946)

Immunohistochemistry (Formalin/PFA-fixed paraffin-embedded sections) analysis of mouse liver tissue sections labeling RBM3 with Purified ab134946 at 1/300 dilution (0.44 µg/mL). Heat mediated antigen retrieval using Bond™ Epitope Retrieval Solution 2 (pH 9.0). Rabbit specific IHC polymer detection kit HRP/DAB (**ab209101**) was used as the secondary antibody. Negative control: PBS instead of the primary antibody. Hematoxylin was used as a counterstain.



Immunohistochemistry (Formalin/PFA-fixed paraffin-embedded sections) - Anti-RBM3 antibody [EPR6061(2)] (ab134946)

Immunohistochemistry (Formalin/PFA-fixed paraffin-embedded sections) analysis of human astrocytoma tissue sections labeling RBM3 with Purified ab134946 at 1/300 dilution (0.44 µg/mL). Heat mediated antigen retrieval using Bond™ Epitope Retrieval Solution 2 (pH 9.0). Rabbit specific IHC polymer detection kit HRP/DAB (**ab209101**) was used as the secondary antibody. Negative control: PBS instead of the primary antibody. Hematoxylin was used as a counterstain.




OIR-D Scanning - Anti-RBM3 antibody [EPR6061(2)] (ab134946)

Equilibrium disassociation constant ( $K_D$ )

Learn more about  $K_D$

[Click here to learn more about  \$K\_D\$](#)

Why choose a recombinant antibody?



- Research with confidence**  
Consistent and reproducible results
- Long-term and scalable supply**  
Recombinant technology
- Success from the first experiment**  
Confirmed specificity
- Ethical standards compliant**  
Animal-free production

Anti-RBM3 antibody [EPR6061(2)] (ab134946)

**Please note:** All products are "FOR RESEARCH USE ONLY. NOT FOR USE IN DIAGNOSTIC PROCEDURES"

### Our Abpromise to you: Quality guaranteed and expert technical support

---

- Replacement or refund for products not performing as stated on the datasheet
- Valid for 12 months from date of delivery
- Response to your inquiry within 24 hours
- We provide support in Chinese, English, French, German, Japanese and Spanish
- Extensive multi-media technical resources to help you
- We investigate all quality concerns to ensure our products perform to the highest standards

If the product does not perform as described on this datasheet, we will offer a refund or replacement. For full details of the Abpromise, please visit <https://www.abcam.cn/abpromise> or contact our technical team.

### Terms and conditions

---

- Guarantee only valid for products bought direct from Abcam or one of our authorized distributors