

### Anti-Ras antibody [4F3] ab55391

★★★★☆ [11 Abreviews](#) [36 References](#) [2 图像](#)

#### 概述

|       |   |
|-------|---|
| 产品名称  | Anti-Ras抗体[4F3]   |
| 描述    | 小鼠单克隆抗体[4F3] to Ras   |
| 宿主    | Mouse   |
| 经测试应用 | 适用于: WB, Flow Cyt   |
| 种属反应性 | 与反应: Human  |
| 免疫原   | Recombinant fragment (GST-tag) corresponding to Human Ras aa 16-125.<br>Sequence:<br><br>KSALTIQLIQNHVDEYDPTIEDSYRKQVVIDGETCLLDILD<br>TAGQEEYS<br>AMRDQYMRTGEGFLCVFAINNTKSFEDIHHYREQIKRVKDSE<br>DVPMVLVG NKCDLPSRTV |

Database link: [P01116](#)

 [Run BLAST with](#)

 [Run BLAST with](#)

#### 常规说明

This product was changed from ascites to tissue culture supernatant on 13<sup>th</sup> Feb 2019. Please note that the dilutions may need to be adjusted accordingly. If you have any questions, please do not hesitate to contact our scientific support team.

The Life Science industry has been in the grips of a reproducibility crisis for a number of years. Abcam is leading the way in addressing this with our range of recombinant monoclonal antibodies and knockout edited cell lines for gold-standard validation. Please check that this product meets your needs before purchasing.

If you have any questions, special requirements or concerns, please send us an inquiry and/or contact our Support team ahead of purchase. Recommended alternatives for this product can be found below, along with publications, customer reviews and Q&As

#### 性能

|      |   |
|------|---|
| 形式   | Liquid  |
| 存放说明 | Shipped at 4°C. Upon delivery aliquot and store at -20°C or -80°C. Avoid repeated freeze / thaw cycles. |
| 存储溶液 | pH: 7.40<br>Constituent: 100% PBS   |

|      |                            |
|------|----------------------------|
| 纯度   | Tissue culture supernatant |
| 克隆   | 单克隆                        |
| 克隆编号 | 4F3                        |
| 同种型  | IgG2a                      |
| 轻链类型 | kappa                      |

## 应用

**The Abpromise guarantee**      **Abpromise™**承诺保证使用ab55391于以下的经测试应用

“应用说明”部分 下显示的仅为推荐的起始稀释度;实际最佳的稀释度/浓度应由使用者检定。

| 应用       | Ab评论      | 说明  |
|----------|-----------|---|
| WB       | ★★★★★ (7) | Use at an assay dependent concentration. Predicted molecular weight: 22 kDa.  |
| Flow Cyt |           | Use at an assay dependent concentration.<br><b>ab170191</b> - Mouse monoclonal IgG2a, is suitable for use as an isotype control with this antibody. |

## 靶标

**功能**      Ras proteins bind GDP/GTP and possess intrinsic GTPase activity.

**疾病相关**      Defects in HRAS are the cause of faciocutaneoskeletal syndrome (FCSS) [MIM:218040]. A rare condition characterized by prenatally increased growth, postnatal growth deficiency, mental retardation, distinctive facial appearance, cardiovascular abnormalities (typically pulmonic stenosis, hypertrophic cardiomyopathy and/or atrial tachycardia), tumor predisposition, skin and musculoskeletal abnormalities.

Defects in HRAS are the cause of congenital myopathy with excess of muscle spindles (CMEMS) [MIM:218040]. CMEMS is a variant of Costello syndrome.

Defects in HRAS may be a cause of susceptibility to Hurthle cell thyroid carcinoma (HCTC) [MIM:607464]. Hurthle cell thyroid carcinoma accounts for approximately 3% of all thyroid cancers. Although they are classified as variants of follicular neoplasms, they are more often multifocal and somewhat more aggressive and are less likely to take up iodine than are other follicular neoplasms.

Note=Mutations which change positions 12, 13 or 61 activate the potential of HRAS to transform cultured cells and are implicated in a variety of human tumors.

Defects in HRAS are a cause of susceptibility to bladder cancer (BLC) [MIM:109800]. A malignancy originating in tissues of the urinary bladder. It often presents with multiple tumors appearing at different times and at different sites in the bladder. Most bladder cancers are transitional cell carcinomas. They begin in cells that normally make up the inner lining of the bladder. Other types of bladder cancer include squamous cell carcinoma (cancer that begins in thin, flat cells) and adenocarcinoma (cancer that begins in cells that make and release mucus and other fluids). Bladder cancer is a complex disorder with both genetic and environmental influences.

Note=Defects in HRAS are the cause of oral squamous cell carcinoma (OSCC).

**序列相似性**      Belongs to the small GTPase superfamily. Ras family.

## 翻译后修饰

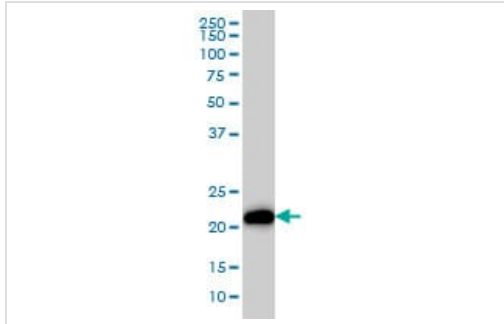
Palmitoylated by the ZDHHC9-GOLGA7 complex. A continuous cycle of de- and re-palmitoylation regulates rapid exchange between plasma membrane and Golgi.

S-nitrosylated; critical for redox regulation. Important for stimulating guanine nucleotide exchange. No structural perturbation on nitrosylation.

## 细胞定位

Cell membrane. Golgi apparatus membrane. The active GTP-bound form is localized most strongly to membranes than the inactive GDP-bound form (By similarity). Shuttles between the plasma membrane and the Golgi apparatus.

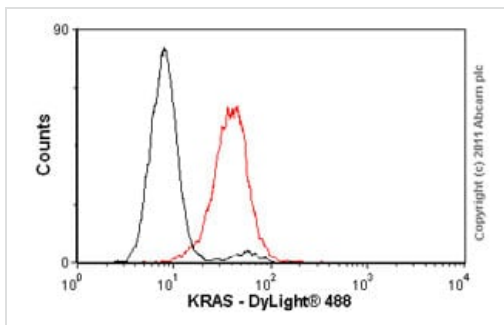
## 图片



Western blot - Anti-Ras antibody [4F3] (ab55391)

cK Ras antibody (ab55391) at 1ug/lane + HeLa cell lysate at 25ug/lane.

This image was generated using the ascites version of the product.



Flow Cytometry - Anti-Ras antibody [4F3] (ab55391)

Overlay histogram showing HeLa cells stained with ab55391 (red line). The cells were fixed with 4% paraformaldehyde (10 min) and then permeabilized with 0.1% PBS-Tween for 20 min. The cells were then incubated in 1x PBS / 10% normal goat serum / 0.3M glycine to block non-specific protein-protein interactions followed by the antibody (ab55391, 1 µg/1x10<sup>6</sup> cells) for 30 min at 22°C. The secondary antibody used was DyLight® 488 goat anti-mouse IgG (H+L) (**ab96879**) at 1/500 dilution for 30 min at 22°C. Isotype control antibody (black line) was mouse IgG2a [ICIGG2A] (**ab91361**, 1 µg/1x10<sup>6</sup> cells) used under the same conditions.

Acquisition of >5,000 events was performed. This antibody gave a slightly decreased signal in HeLa cells fixed with methanol (5 min)/permeabilized with 0.1% PBS-Tween 20 used under the same conditions.

This image was generated using the ascites version of the product.

**Please note:** All products are "FOR RESEARCH USE ONLY. NOT FOR USE IN DIAGNOSTIC PROCEDURES"

## Our Abpromise to you: Quality guaranteed and expert technical support

- Replacement or refund for products not performing as stated on the datasheet
- Valid for 12 months from date of delivery

- Response to your inquiry within 24 hours
- We provide support in Chinese, English, French, German, Japanese and Spanish
- Extensive multi-media technical resources to help you
- We investigate all quality concerns to ensure our products perform to the highest standards

If the product does not perform as described on this datasheet, we will offer a refund or replacement. For full details of the Abpromise, please visit <https://www.abcam.cn/abpromise> or contact our technical team.

### **Terms and conditions**

---

- Guarantee only valid for products bought direct from Abcam or one of our authorized distributors