


### Anti-RACK1 antibody ab62735

★★★★★ [3 Abreviews](#) [11 References](#) [1 图像](#)

#### 概述

产品名称	Anti-RACK1抗体
描述	兔多克隆抗体to RACK1
宿主	Rabbit
经测试应用	适用于: ICC/IF, WB, IP
种属反应性	与反应: Mouse, Rat, Human 预测可用于: Chicken, Cow, Pig, Xenopus laevis, Cynomolgus monkey 
免疫原	Synthetic peptide: TEQMTLRGT LKGHNG - C , conjugated to KLH by a C terminal Cysteine residue linker, corresponding to N terminal amino acids 2-16 of Human RACK1

 [Run BLAST with](#)

 [Run BLAST with](#)

#### 常规说明

The Life Science industry has been in the grips of a reproducibility crisis for a number of years. Abcam is leading the way in addressing this with our range of recombinant monoclonal antibodies and knockout edited cell lines for gold-standard validation. Please check that this product meets your needs before purchasing.

If you have any questions, special requirements or concerns, please send us an inquiry and/or contact our Support team ahead of purchase. Recommended alternatives for this product can be found below, along with publications, customer reviews and Q&As

#### 性能

形式	Liquid
存放说明	Shipped at 4°C. Store at +4°C short term (1-2 weeks). Upon delivery aliquot. Store at -20°C or -80°C. Avoid freeze / thaw cycle.
存储溶液	pH: 7.40 Preservative: 0.097% Sodium azide Constituent: 0.0268% PBS
纯度	IgG fraction
纯化说明	The antiserum was fractionated and further purified by ion-exchange chromatography to provide the IgG fraction of antiserum that is essentially free of other rabbit serum proteins.
克隆	多克隆

同种型IgG

应用

The Abpromise guarantee      **Abpromise™**承诺保证使用ab62735于以下的经测试应用

“应用说明”部分 下显示的仅为推荐的起始稀释度;实际最佳的稀释度/浓度应由使用者检定。

应用	Ab评论	说明
ICC/IF		Use at an assay dependent concentration.
WB	★★★★★ (2)	1/500 - 1/1000. Detects a band of approximately 30 kDa (predicted molecular weight: 35 kDa).
IP	★★★★★ (1)	Use at an assay dependent concentration. Use 5-10 ÅµL.

靶标

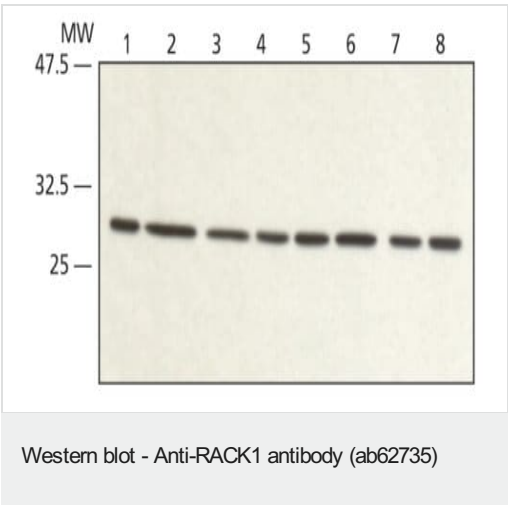
**功能**      Seems to bind protein kinase C acting as an intracellular receptor to anchor the activated PKC to the cytoskeleton. May be involved in up-regulation of the activity of kinases such as PKC via binding to KRT1. Together with KRT1 and ITGB1, serves as a platform for SRC activation or inactivation. May play an important role in the developing brain and neuronal differentiation.

**序列相似性**      Belongs to the WD repeat G protein beta family.  
Contains 7 WD repeats.

**结构域**      The WD repeats domain 5 mediates interaction with TRIM63.

**细胞定位**      Cell membrane. Located on plasma membrane of neuroblastoma NMB7 cells.

图片



**All lanes :** Anti-RACK1 antibody (ab62735) at 1/500 dilution

- Lane 1 :** Extract from hek-293T cell line
- Lane 2 :** Extract from HeLa cell line
- Lane 3 :** Extract from MCF7 cell line
- Lane 4 :** Extract from U2OS cell line
- Lane 5 :** Extract from Jurkat cell line
- Lane 6 :** Extract from RAT1 cell line
- Lane 7 :** Extract from PC12 cell line
- Lane 8 :** Extract from NIH3T3 cell line

**Secondary**  
**All lanes :** Goat Anti-Rabbit IgG

Developed using the ECL technique.

**Predicted band size:** 35 kDa

**Observed band size:** 30 kDa

**Please note:** All products are "FOR RESEARCH USE ONLY. NOT FOR USE IN DIAGNOSTIC PROCEDURES"

#### **Our Abpromise to you: Quality guaranteed and expert technical support**

---

- Replacement or refund for products not performing as stated on the datasheet
- Valid for 12 months from date of delivery
- Response to your inquiry within 24 hours
- We provide support in Chinese, English, French, German, Japanese and Spanish
- Extensive multi-media technical resources to help you
- We investigate all quality concerns to ensure our products perform to the highest standards

If the product does not perform as described on this datasheet, we will offer a refund or replacement. For full details of the Abpromise, please visit <https://www.abcam.cn/abpromise> or contact our technical team.

#### **Terms and conditions**

---

- Guarantee only valid for products bought direct from Abcam or one of our authorized distributors