



Anti-PYK2 (phospho Y402) antibody ab131543

3 References **3 图像**

概述

产品名称	Anti-PYK2 (phospho Y402)抗体
描述	兔多克隆抗体to PYK2 (phospho Y402)
宿主	Rabbit
经测试应用	适用于: WB, IHC-P, ICC/IF
种属反应性	与反应: Human
免疫原	Synthetic peptide corresponding to Human PYK2 (phospho Y202) conjugated to keyhole limpet haemocyanin. NP_004094.3 Database link: Q14289
	<div>  Run BLAST with </div> <div>  Run BLAST with </div>
阳性对照	HeLa cells; Jurkat whole cell lysate (ab7899) (PMA-treated); Human breast carcinoma tissue.
常规说明	<p>The Life Science industry has been in the grips of a reproducibility crisis for a number of years. Abcam is leading the way in addressing this with our range of recombinant monoclonal antibodies and knockout edited cell lines for gold-standard validation. Please check that this product meets your needs before purchasing.</p> <p>If you have any questions, special requirements or concerns, please send us an inquiry and/or contact our Support team ahead of purchase. Recommended alternatives for this product can be found below, along with publications, customer reviews and Q&As</p>

性能

形式	Liquid
存放说明	Shipped at 4°C. Store at -20°C. Stable for 12 months at -20°C.
存储溶液	pH: 7.40 Preservative: 0.02% Sodium azide Constituents: 0.88% Sodium chloride, 50% Glycerol (glycerin, glycerine), 49% PBS
	PBS without Mg ²⁺ and Ca ²⁺
纯度	Immunogen affinity purified
纯化说明	ab131543 was purified by affinity chromatography using epitope-specific phosphopeptide. Non-phospho specific antibodies were removed by chromatography using non-phosphopeptide.
克隆	多克隆

同种型

IgG

应用

The Abpromise guarantee

Abpromise™ 承诺保证使用 ab131543 于以下的经测试应用

“应用说明”部分 下显示的仅为推荐的起始稀释度;实际最佳的稀释度/浓度应由使用者检定。

应用	Ab 评论	说明
WB		1/500 - 1/1000. Predicted molecular weight: 116 kDa.
IHC-P		1/50 - 1/100.
ICC/IF		1/100 - 1/200.

靶标

功能

Involved in calcium induced regulation of ion channel and activation of the map kinase signaling pathway. May represent an important signaling intermediate between neuropeptide activated receptors or neurotransmitters that increase calcium flux and the downstream signals that regulate neuronal activity. Interacts with the SH2 domain of Grb2. May phosphorylate the voltage-gated potassium channel protein Kv1.2. Its activation is highly correlated with the stimulation of c-Jun N-terminal kinase activity. Involved in osmotic stress-dependent SNCA 'Tyr-125' phosphorylation. In concert with SRC, plays an important role in osteoclastic bone resorption. Both the formation of a SRC-PTK2B complex, and SRC kinase activity are necessary for this function. The Tyr-402 phosphorylated form serves as a docking site for SRC and is important for the organization of the osteoclast actin cytoskeleton and attachment sites and for bone resorption.

组织特异性

Most abundant in the brain, with highest levels in amygdala and hippocampus. Low levels in kidney. Also expressed in spleen and lymphocytes.

序列相似性

Belongs to the protein kinase superfamily. Tyr protein kinase family. FAK subfamily.
Contains 1 FERM domain.
Contains 1 protein kinase domain.

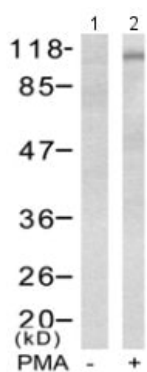
翻译后修饰

Phosphorylated on tyrosine residues in response to various stimuli that elevate the intracellular calcium concentration, as well as by PKC activation. Recruitment by nephrocystin to cell matrix adhesions initiates Tyr-402 phosphorylation. In monocytes, adherence to substrata is required for tyrosine phosphorylation and kinase activation. Angiotensin II, thapsigargin and L-alpha-lysophosphatidic acid (LPA) also induce autophosphorylation and increase kinase activity.

细胞定位

Cytoplasm. Cell membrane. Interaction with nephrocystin induces the membrane-association of the kinase.

图片



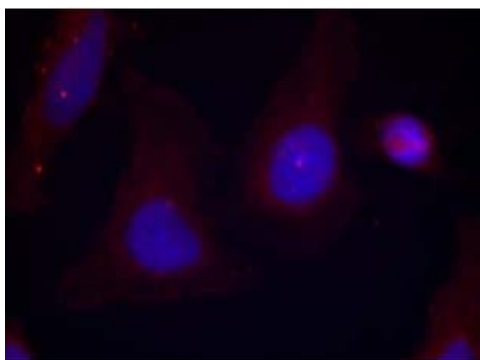
Western blot - Anti-PYK2 (phospho Y402) antibody (ab131543)

All lanes : Anti-PYK2 (phospho Y402) antibody (ab131543) at 1/500 dilution

Lane 1 : Jurkat cell lysate, untreated

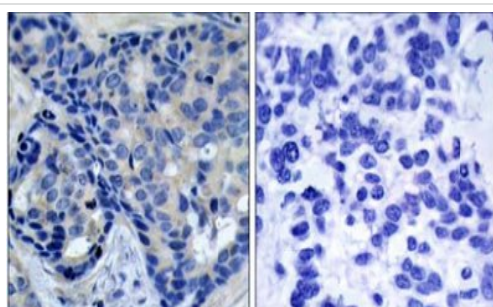
Lane 2 : Jurkat cell lysate, treated with PMA

Predicted band size: 116 kDa



Immunocytochemistry/ Immunofluorescence - Anti-PYK2 (phospho Y402) antibody (ab131543)

Immunofluorescent analysis of methanol-fixed HeLa cells labelling PYK2 (phospho-Y402) with ab131543 at 1/100 dilution.



Immunohistochemistry (Formalin/PFA-fixed paraffin-embedded sections) - Anti-PYK2 (phospho Y402) antibody (ab131543)

Immunohistochemical analysis of Human breast carcinoma tissue labelling PYK2 (phospho Y402) with ab131543 at 1/50 dilution. The image on the right is treated with the synthesized peptide.

Please note: All products are "FOR RESEARCH USE ONLY. NOT FOR USE IN DIAGNOSTIC PROCEDURES"

Our Abpromise to you: Quality guaranteed and expert technical support

- Replacement or refund for products not performing as stated on the datasheet
- Valid for 12 months from date of delivery
- Response to your inquiry within 24 hours

- We provide support in Chinese, English, French, German, Japanese and Spanish
- Extensive multi-media technical resources to help you
- We investigate all quality concerns to ensure our products perform to the highest standards

If the product does not perform as described on this datasheet, we will offer a refund or replacement. For full details of the Abpromise, please visit <https://www.abcam.cn/abpromise> or contact our technical team.

Terms and conditions

- Guarantee only valid for products bought direct from Abcam or one of our authorized distributors