


Anti-PYGL antibody ab198268

★★★★★ [3 Abreviews](#) [9 References](#) [2 图像](#)

概述

产品名称	Anti-PYGL 抗体
描述	兔多克隆抗体 to PYGL
宿主	Rabbit
经测试应用	适用于: IHC-P, WB
种属反应性	与反应: Human 预测可用于: Mouse, Rat 
免疫原	Recombinant fragment (GST-tag) corresponding to Human PYGL (C terminal). BC082229 Database link: P06737
阳性对照	231 and PC3 cell lysates. Human thyroid cancer tissue.
常规说明	<p>The Life Science industry has been in the grips of a reproducibility crisis for a number of years. Abcam is leading the way in addressing this with our range of recombinant monoclonal antibodies and knockout edited cell lines for gold-standard validation. Please check that this product meets your needs before purchasing.</p> <p>If you have any questions, special requirements or concerns, please send us an inquiry and/or contact our Support team ahead of purchase. Recommended alternatives for this product can be found below, along with publications, customer reviews and Q&As</p>

性能

形式	Liquid
存放说明	Shipped at 4°C. Store at +4°C short term (1-2 weeks). Upon delivery aliquot. Store at -20°C long term. Avoid freeze / thaw cycle.
存储溶液	pH: 7.4 Preservative: 0.05% Sodium azide Constituents: 49% PBS, 50% Glycerol (glycerin, glycerine)
纯度	Immunogen affinity purified
克隆	多克隆
同种型	IgG

应用

The Abpromise guarantee

Abpromise™承诺保证使用ab198268于以下的经测试应用

“应用说明”部分 下显示的仅为推荐的起始稀释度;实际最佳的稀释度/浓度应由使用者检定。

应用	Ab评论	说明
IHC-P	★★★★★ (1)	1/30 - 1/150.
WB	★★★★★ (2)	1/500 - 1/2000. Predicted molecular weight: 97 kDa.

靶标

功能

Phosphorylase is an important allosteric enzyme in carbohydrate metabolism. Enzymes from different sources differ in their regulatory mechanisms and in their natural substrates. However, all known phosphorylases share catalytic and structural properties.

疾病相关

Defects in PYGL are the cause of glycogen storage disease type 6 (GSD6) [MIM:232700]. A metabolic disorder characterized by mild to moderate hypoglycemia, mild ketosis, growth retardation, and prominent hepatomegaly. Heart and skeletal muscle are not affected.

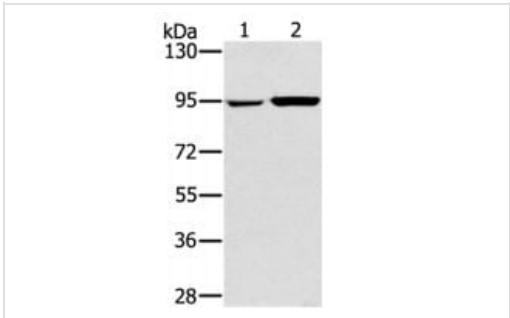
序列相似性

Belongs to the glycogen phosphorylase family.

翻译后修饰

Phosphorylation of Ser-15 converts phosphorylase B (unphosphorylated) to phosphorylase A.

图片



Western blot - Anti-PYGL antibody (ab198268)

All lanes : Anti-PYGL antibody (ab198268) at 1/400 dilution

Lane 1 : 231 cell lysate

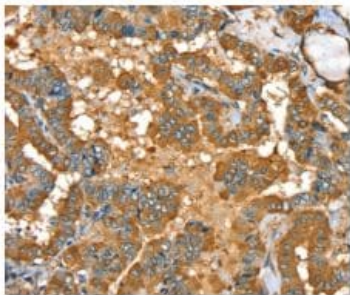
Lane 2 : PC3 cell lysate

Lysates/proteins at 40 µg per lane.

Developed using the ECL technique.

Predicted band size: 97 kDa

Exposure time: 20 seconds



Immunohistochemical analysis of paraffin-embedded Human thyroid cancer tissue labeling PYGL with ab198268 at 1/35 dilution.

Immunohistochemistry (Formalin/PFA-fixed paraffin-embedded sections) - Anti-PYGL antibody (ab198268)

Please note: All products are "FOR RESEARCH USE ONLY. NOT FOR USE IN DIAGNOSTIC PROCEDURES"

Our Abpromise to you: Quality guaranteed and expert technical support

- Replacement or refund for products not performing as stated on the datasheet
- Valid for 12 months from date of delivery
- Response to your inquiry within 24 hours
- We provide support in Chinese, English, French, German, Japanese and Spanish
- Extensive multi-media technical resources to help you
- We investigate all quality concerns to ensure our products perform to the highest standards

If the product does not perform as described on this datasheet, we will offer a refund or replacement. For full details of the Abpromise, please visit <https://www.abcam.cn/abpromise> or contact our technical team.

Terms and conditions

- Guarantee only valid for products bought direct from Abcam or one of our authorized distributors