

Anti-PU.1/Spi1 antibody [EPR3158Y] ab76543

重组 RabMAb

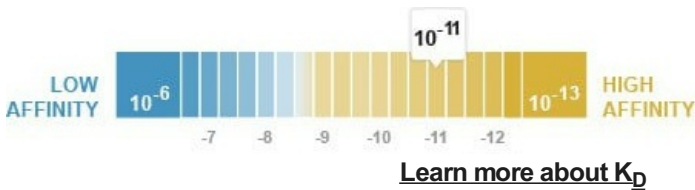
★★★★★ 3 Abreviews 15 References 3 图像

概述

产品名称	Anti-PU.1/Spi1抗体[EPR3158Y]
描述	兔单克隆抗体[EPR3158Y] to PU.1/Spi1
宿主	Rabbit
经测试应用	适用于: IHC-P, WB 不适用于: Flow Cyt (Intra) or ICC/IF
种属反应性	与反应: Human
免疫原	Synthetic peptide within Human PU.1/Spi1 aa 1-100 (N terminal). The exact sequence is proprietary. Database link: <a href="#">P17947</a>
阳性对照	WB: Daudi, THP-1 and Raji Whole cell lysate IHC: human tonsil tissue
常规说明	This product is a recombinant monoclonal antibody, which offers several advantages including: - High batch-to-batch consistency and reproducibility - Improved sensitivity and specificity - Long-term security of supply - Animal-free production For more information <a href="#">see here</a> .  Our RabMAb <sup>®</sup> technology is a patented hybridoma-based technology for making rabbit monoclonal antibodies. For details on our patents, please refer to <a href="#">RabMAb<sup>®</sup> patents</a> .

性能

形式	Liquid
存放说明	Shipped at 4°C. Store at -20°C. Stable for 12 months at -20°C.
解离常数 (K <sub>D</sub> )	K <sub>D</sub> = 4.40 x 10 <sup>-11</sup> M



存储溶液	pH: 7.20
------	----------

**纯度**

## 克隆

**克隆编号**

**同种型**

## 应用

**Abpromise™** 承诺保证使用ab76543于以下的经测试应用

应用	Ab评论	说明
IHC-P		1/3000. Perform heat mediated antigen retrieval before commencing with IHC staining protocol. For unpurified use: 1/100.00000 - 1/250.00000
WB	★★★★★ (2)	1/1000. Detects a band of approximately 42 kDa (predicted molecular weight: 31 kDa). For unpurified use: 1/5000.00000 - 1/20000.00000

Is unsuitable for Flow Cyt (Intra) or ICC/IF.

## 靶标

## 功能

Binds to the PU-box, a purine-rich DNA sequence (5'-GAGGAA-3') that can act as a lymphoid-specific enhancer. This protein is a transcriptional activator that may be specifically involved in the differentiation or activation of macrophages or B-cells. Also binds RNA and may modulate pre-mRNA splicing.

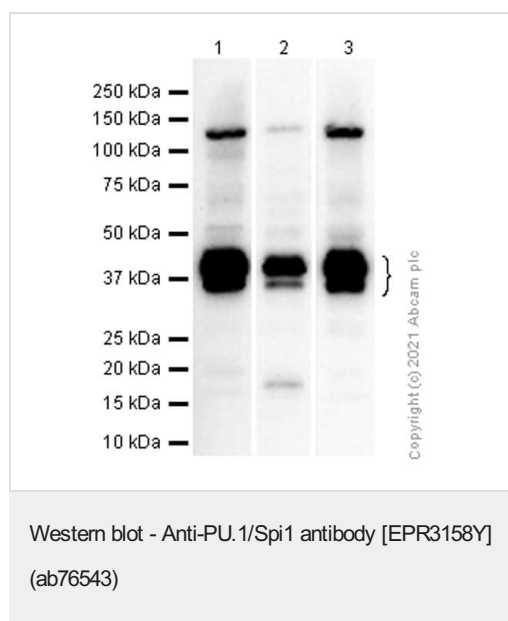
## 序列相似性

Belongs to the ETS family.  
Contains 1 ETS DNA-binding domain.

## 细胞定位

Nucleus.

图片



**All lanes :** Anti-PU.1/Spi1 antibody [EPR3158Y] (ab76543) at 1/1000 dilution (Purified)

**Lane 1 :** Daudi (Human Burkitt's lymphoma lymphoblast) whole cell lysate

**Lane 2 :** THP-1 (Human monocytic leukemia monocyte) whole cell lysate

**Lane 3 :** Raji (Human Burkitt's lymphoma B lymphocyte) whole cell lysate

Lysates/proteins at 20 µg per lane.

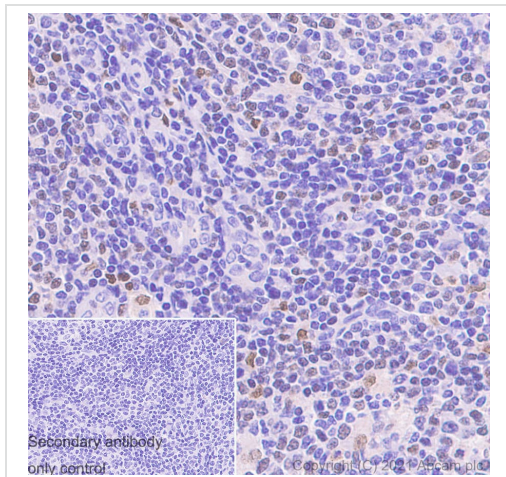
### Secondary

**All lanes :** Goat Anti-Rabbit IgG H&L (HRP) ([ab97051](#)) at 1/20000 dilution

**Predicted band size:** 31 kDa

**Observed band size:** 37-42 kDa

PU.1 is a 37-42 kDa member of the ets family of transcription factors. The molecule weight observed is consistent with what has been described in the literature (PMID: 28362429, 31586032, 28586009).



Immunohistochemistry (Formalin/PFA-fixed paraffin-embedded sections) analysis of human tonsil tissue sections labeling PU.1/Spi1 with Purified ab76543 at 1:3000 dilution (0.035 µg/ml). Heat mediated antigen retrieval was performed using Heat mediated antigen retrieval using Bond™ Epitope Retrieval Solution 2 (pH 9.0) . Tissue was counterstained with Hematoxylin. Rabbit specific IHC polymer detection kit HRP/DAB (**ab209101**) secondary antibody was used. PBS instead of the primary antibody was used as the negative control.

Immunohistochemistry (Formalin/PFA-fixed paraffin-embedded sections) - Anti-PU.1/Spi1 antibody [EPR3158Y] (ab76543)

Why choose a recombinant antibody?

**Research with confidence**  
Consistent and reproducible results

**Long-term and scalable supply**  
Recombinant technology

**Success from the first experiment**  
Confirmed specificity

**Ethical standards compliant**  
Animal-free production

Anti-PU.1/Spi1 antibody [EPR3158Y] (ab76543)

**Please note:** All products are "FOR RESEARCH USE ONLY. NOT FOR USE IN DIAGNOSTIC PROCEDURES"

## Our Abpromise to you: Quality guaranteed and expert technical support

- Replacement or refund for products not performing as stated on the datasheet

4

- Valid for 12 months from date of delivery
- Response to your inquiry within 24 hours
- We provide support in Chinese, English, French, German, Japanese and Spanish
- Extensive multi-media technical resources to help you
- We investigate all quality concerns to ensure our products perform to the highest standards

If the product does not perform as described on this datasheet, we will offer a refund or replacement. For full details of the Abpromise, please visit <https://www.abcam.cn/abpromise> or contact our technical team.

## **Terms and conditions**

---

- Guarantee only valid for products bought direct from Abcam or one of our authorized distributors