

Anti-PTBP1 antibody [EPR9049(B)] ab134950

敲除验证
重组
RabMAb

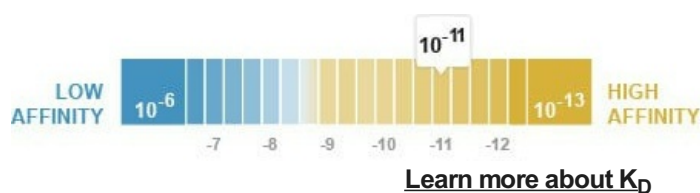
[1 References](#)
[6 图像](#)

概述

产品名称	Anti-PTBP1抗体[EPR9049(B)]
描述	兔单克隆抗体[EPR9049(B)] to PTBP1
宿主	Rabbit
经测试应用	适用于: WB, ICC/IF 不适用于: Flow Cyt, IHC-P or IP
种属反应性	与反应: Human
免疫原	Synthetic peptide within Human PTBP1 aa 350-450. The exact sequence is proprietary.
阳性对照	WB: HAP1, HeLa, Daudi, Jurkat and BXPC3 cell lysates. ICC/IF: HeLa cells.
常规说明	<p>This product is a recombinant monoclonal antibody, which offers several advantages including:</p> <ul style="list-style-type: none"> - High batch-to-batch consistency and reproducibility - Improved sensitivity and specificity - Long-term security of supply - Animal-free production <p>For more information see here.</p> <p>Our RabMAb[®] technology is a patented hybridoma-based technology for making rabbit monoclonal antibodies. For details on our patents, please refer to RabMAb[®] patents.</p> <p>Mouse, Rat: We have preliminary internal testing data to indicate this antibody may not react with these species. Please contact us for more information.</p>

性能

形式	Liquid
存放说明	Shipped at 4°C. Store at -20°C.
解离常数 (K_D)	$K_D = 8.10 \times 10^{-11} \text{ M}$



存储溶液	pH: 7.2 Preservative: 0.01% Sodium azide Constituents: 9% PBS, 40% Glycerol (glycerin, glycerine), 0.05% BSA, 50% Tissue culture supernatant
纯度	Tissue culture supernatant
克隆	单克隆
克隆编号	EPR9049(B)
同种型	IgG

应用

The Abpromise guarantee **Abpromise™承诺保证使用ab134950于以下的经测试应用**

“应用说明”部分下显示的仅为推荐的起始稀释度;实际最佳的稀释度/浓度应由使用者检定。

应用	Ab评论	说明
WB		1/1000 - 1/10000. Predicted molecular weight: 57 kDa.
ICC/IF		1/100 - 1/250.

应用说明 Is unsuitable for Flow Cyt, IHC-P or IP.

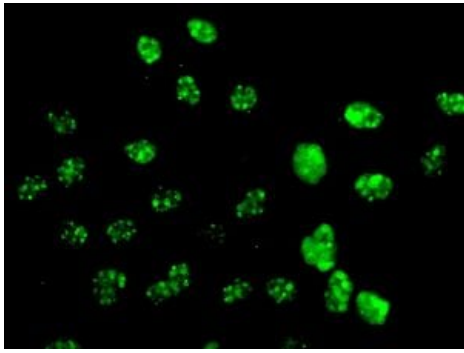
靶标

功能	Plays a role in pre-mRNA splicing and in the regulation of alternative splicing events. Binds to the polypyrimidine tract of introns. May promote RNA looping when bound to two separate polypyrimidine tracts in the same pre-mRNA. May promote the binding of U2 snRNP to pre-mRNA. Cooperates with RAVR1 to modulate switching between mutually exclusive exons during maturation of the TPM1 pre-mRNA.
序列相似性	Contains 4 RRM (RNA recognition motif) domains.
细胞定位	Nucleus.

序列相似性 Contains 4 RRM (RNA recognition motif) domains.

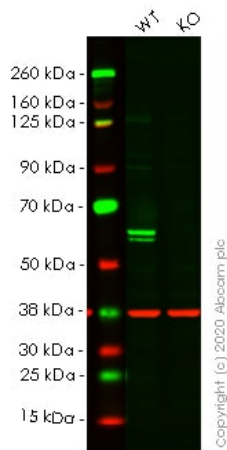
细胞定位 Nucleus.

图片



Immunocytochemistry/ Immunofluorescence - Anti-PTBP1 antibody [EPR9049(B)] (ab134950)

Immunofluorescent analysis of HeLa cells labelling PTBP1 with ab134950 at 1/100 dilution.



Western blot - Anti-PTBP1 antibody [EPR9049(B)] (ab134950)

All lanes : Anti-PTBP1 antibody [EPR9049(B)] (ab134950) at 1/1000 dilution

Lane 1 : Wild-type HeLa cell lysate

Lane 2 : PTBP1 knockout HeLa cell lysate

Lysates/proteins at 20 µg per lane.

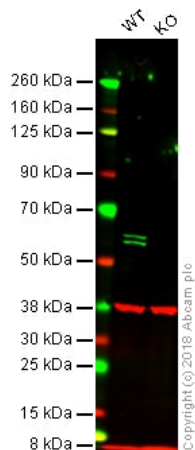
Performed under reducing conditions.

Predicted band size: 57 kDa

Observed band size: 57 kDa

Lanes 1- 2: Merged signal (red and green). Green - ab134950 observed at 57 kDa. Red - Anti-GAPDH antibody [6C5] - Loading Control ([ab8245](#)) observed at 37 kDa.

ab134950 was shown to react with PTBP1 in wild-type HeLa cells in western blot. Loss of signal was observed when knockout cell line [ab265155](#) (knockout cell lysate [ab257614](#)) was used. Wild-type HeLa and PTBP1 knockout HeLa cell lysates were subjected to SDS-PAGE. Membrane was blocked for 1 hour at room temperature in 0.1% TBST with 3% non-fat dried milk. ab134950 and Anti-GAPDH antibody [6C5] - Loading Control ([ab8245](#)) overnight at 4°C at a 1 in 1000 dilution and a 1 in 20000 dilution respectively. Blots were developed with Goat anti-Rabbit IgG H&L (IRDye®800CW) preadsorbed ([ab216773](#)) and Goat anti-Mouse IgG H&L (IRDye®680RD) preadsorbed ([ab216776](#)) secondary antibodies at 1 in 20000 dilution for 1 hour at room temperature before imaging.



Western blot - Anti-PTBP1 antibody [EPR9049(B)]
(ab134950)

All lanes : Anti-PTBP1 antibody [EPR9049(B)] (ab134950) at 1/1000 dilution

Lane 1 : Wild-type HAP1 whole cell lysate

Lane 2 : PTBP1 knockout HAP1 whole cell lysate

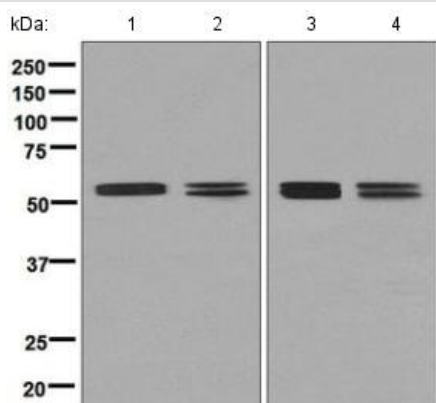
Lysates/proteins at 20 µg per lane.

Predicted band size: 57 kDa

Lanes 1 - 2: Merged signal (red and green). Green - ab134950 observed at 57 kDa. Red - loading control, **ab9484**, observed at 37 kDa.

ab134950 was shown to specifically react with PTBP1 in wild-type HAP1 cells as signal was lost in PTBP1 knockout cells. Wild-type and PTBP1 knockout samples were subjected to SDS-PAGE.

ab134950 and **ab9484** (Mouse anti-GAPDH loading control) were incubated overnight at 4°C at 1/1000 dilution and 1/20000 dilution respectively. Blots were developed with Goat anti-Rabbit IgG H&L (IRDye® 800CW) preabsorbed **ab216773** and Goat anti-Mouse IgG H&L (IRDye® 680RD) preabsorbed **ab216776** secondary antibodies at 1/10000 dilution for 1 hour at room temperature before imaging.



Western blot - Anti-PTBP1 antibody [EPR9049(B)]
(ab134950)

All lanes : Anti-PTBP1 antibody [EPR9049(B)] (ab134950) at 1/1000 dilution

Lane 1 : Daudi cell lysate

Lane 2 : HeLa cell lysate

Lane 3 : Jurkat cell lysate

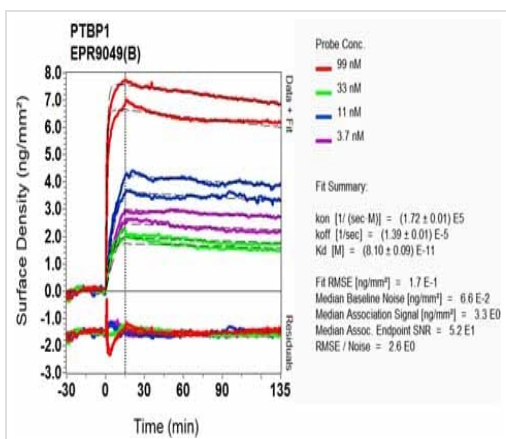
Lane 4 : BXP3 cell lysate

Lysates/proteins at 10 µg per lane.

Secondary

All lanes : HRP labelled goat anti-rabbit at 1/2000 dilution

Predicted band size: 57 kDa



SPR Scanning - Anti-PTBP1 antibody

[EPR9049(B)] (ab134950)

Equilibrium dissociation constant (K_D)

Learn more about K_D

[Click here to learn more about \$K_D\$](#)

Why choose a
recombinant antibody?



**Research with
confidence**
Consistent and
reproducible results



**Long-term and
scalable supply**
Recombinant
technology



**Success from the
first experiment**
Confirmed
specificity



**Ethical standards
compliant**
Animal-free
production

Anti-PTBP1 antibody [EPR9049(B)] (ab134950)

Please note: All products are "FOR RESEARCH USE ONLY. NOT FOR USE IN DIAGNOSTIC PROCEDURES"

Our Abpromise to you: Quality guaranteed and expert technical support

- Replacement or refund for products not performing as stated on the datasheet
- Valid for 12 months from date of delivery
- Response to your inquiry within 24 hours
- We provide support in Chinese, English, French, German, Japanese and Spanish
- Extensive multi-media technical resources to help you
- We investigate all quality concerns to ensure our products perform to the highest standards

If the product does not perform as described on this datasheet, we will offer a refund or replacement. For full details of the Abpromise, please visit <https://www.abcam.cn/abpromise> or contact our technical team.

Terms and conditions

- Guarantee only valid for products bought direct from Abcam or one of our authorized distributors