

### Anti-PSME3 antibody ab157157

★★★★★ [2 Abreviews](#) [5 References](#) [5 图像](#)

#### 概述

产品名称	Anti-PSME3抗体
描述	兔多克隆抗体to PSME3
宿主	Rabbit
经测试应用	适用于: WB, IP, IHC-P
种属反应性	与反应: Mouse, Human 预测可用于: Rat, Rabbit, Horse, Chicken, Guinea pig, Cow, Turkey, Pig, Xenopus laevis, Chimpanzee, Rhesus monkey, Gorilla, Orangutan, Zebra finch, Xenopus tropicalis 
免疫原	Synthetic peptide corresponding to Human PSME3 aa 200-300. Database link: <a href="#">P61289</a>  <a href="#">Run BLAST with</a>  <a href="#">Run BLAST with</a>
阳性对照	IP: HEK293 whole cell lysate. WB: 293T, HeLa, Jurkat and mouse NIH 3T3 whole cell lysates. IHC-P: Mouse renal carcinoma and human lung carcinoma tissue.
常规说明	<p>The Life Science industry has been in the grips of a reproducibility crisis for a number of years. Abcam is leading the way in addressing this with our range of recombinant monoclonal antibodies and knockout edited cell lines for gold-standard validation. Please check that this product meets your needs before purchasing.</p> <p>If you have any questions, special requirements or concerns, please send us an inquiry and/or contact our Support team ahead of purchase. Recommended alternatives for this product can be found below, along with publications, customer reviews and Q&amp;As</p>

#### 性能

形式	Liquid
存放说明	Shipped at 4°C. Store at +4°C.
存储溶液	pH: 7 Preservative: 0.09% Sodium azide Constituent: 99% Tris citrate/phosphate
纯度	pH 7-8 Immunogen affinity purified
纯化说明	ab157157 was affinity purified using an epitope specific to PSME3 immobilized on solid support.

克隆

多克隆

同种型

IgG

应用

The Abpromise guarantee

Abpromise™承诺保证使用ab157157于以下的经测试应用

“应用说明”部分 下显示的仅为推荐的起始稀释度;实际最佳的稀释度/浓度应由使用者检定。

应用	Ab评论	说明
WB	★★★★★ (1)	1/500 - 1/2500. Predicted molecular weight: 29 kDa.
IP	★★★★★ (1)	Use at 2-10 µg/mg of lysate.
IHC-P		1/1000.

靶标

功能

Subunit of the 11S REG-gamma (also called PA28-gamma) proteasome regulator, a donut-shaped homoheptamer which associates with the proteasome. 11S REG-gamma activates the trypsin-like catalytic subunit of the proteasome but inhibits the chymotrypsin-like and postglutamyl-preferring (PGPH) subunits. Facilitates the MDM2-p53/TP53 interaction which promotes ubiquitination- and MDM2-dependent proteasomal degradation of p53/TP53, limiting its accumulation and resulting in inhibited apoptosis after DNA damage. May also be involved in cell cycle regulation.

序列相似性

Belongs to the PA28 family.

结构域

The C-terminal sequences affect heptamer stability and proteasome affinity.

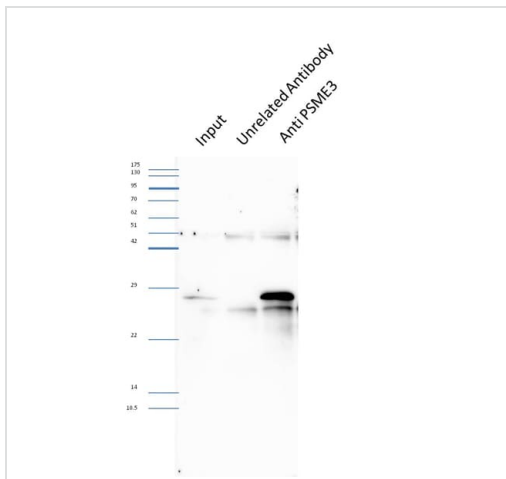
翻译后修饰

Phosphorylated by MAP3K3.

细胞定位

Nucleus. Cytoplasm. Localizes to the cytoplasm during mitosis following nuclear envelope breakdown at this distinct stage of the cell cycle which allows its interaction with MAP3K3 kinase.

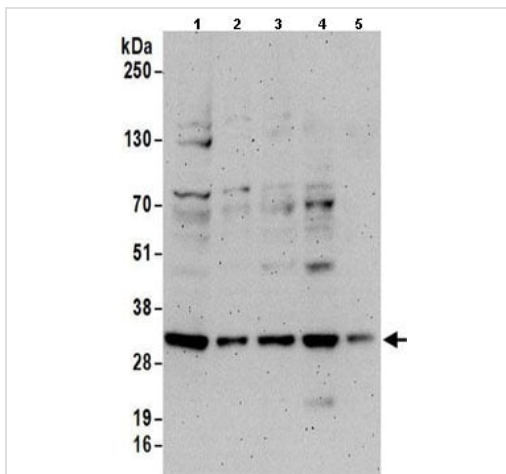
图片



Immunoprecipitation - Anti-PSME3 antibody  
(ab157157)

This image is courtesy of an anonymous Abreview

ab157157 Immunoprecipitating PSME3 in human HEK293 whole cell lysate. 250µg of cell lysate was incubated with the undiluted primary antibody and matrix (Protein G) for 18 hours at 4°C. For western blotting ab157157 (1/1000) was used to confirm successful immunoprecipitation.



Western blot - Anti-PSME3 antibody (ab157157)

**All lanes :** Anti-PSME3 antibody (ab157157) at 1 µg/ml

**Lane 1 :** 293T whole cell lysate at 50 µg

**Lane 2 :** 293T whole cell lysate at 15 µg

**Lane 3 :** HeLa whole cell lysate at 50 µg

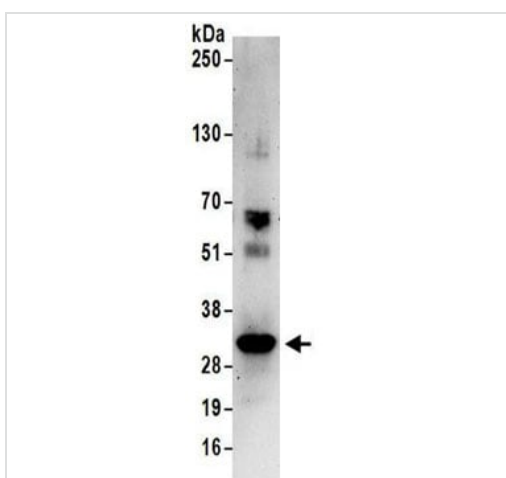
**Lane 4 :** Jurkat whole cell lysate at 50 µg

**Lane 5 :** NIH 3T3 whole cell lysate at 50 µg

Developed using the ECL technique.

**Predicted band size:** 29 kDa

**Exposure time:** 3 minutes

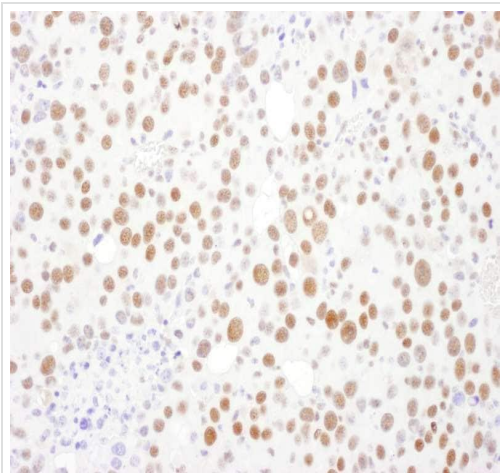


Immunoprecipitation - Anti-PSME3 antibody  
(ab157157)

Detection of PSME3 by Western Blot of Immunoprecipitate.

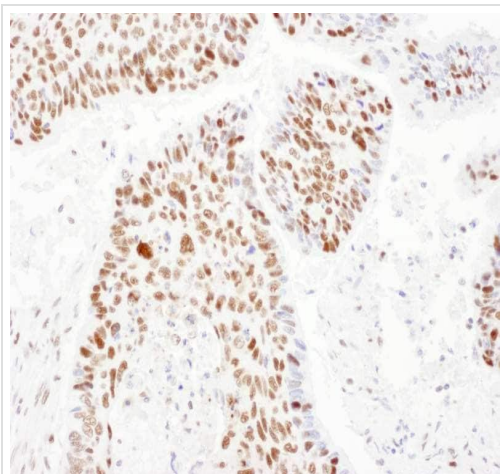
ab157157 at 1µg/ml labeling PSME3 in 293T whole cell lysate immunoprecipitated using ab157157 at 6µg/mg lysate (1 mg/IP; 20% of IP loaded/lane).

Detection: Chemiluminescence with exposure time of 3 minutes.



Immunohistochemistry (Formalin/PFA-fixed paraffin-embedded sections) - Anti-PSME3 antibody (ab157157)

Immunohistochemical (Formalin/PFA-fixed paraffin-embedded sections) analysis of mouse renal carcinoma tissue sections using **ab117809** at 1/1000 dilution.



Immunohistochemistry (Formalin/PFA-fixed paraffin-embedded sections) - Anti-PSME3 antibody (ab157157)

Immunohistochemical (Formalin/PFA-fixed paraffin-embedded sections) analysis of human lung carcinoma tissue sections using **ab117809** at 1/1000 dilution.

**Please note:** All products are "FOR RESEARCH USE ONLY. NOT FOR USE IN DIAGNOSTIC PROCEDURES"

### Our Abpromise to you: Quality guaranteed and expert technical support

- Replacement or refund for products not performing as stated on the datasheet
- Valid for 12 months from date of delivery
- Response to your inquiry within 24 hours
- We provide support in Chinese, English, French, German, Japanese and Spanish
- Extensive multi-media technical resources to help you
- We investigate all quality concerns to ensure our products perform to the highest standards

If the product does not perform as described on this datasheet, we will offer a refund or replacement. For full details of the Abpromise, please visit <https://www.abcam.cn/abpromise> or contact our technical team.

#### **Terms and conditions**

---

- Guarantee only valid for products bought direct from Abcam or one of our authorized distributors