


Anti-PSME1 antibody [EPR10968(B)] ab155985

重组 RabMAb

★★★★★ **1 Abreviews** 5 图像

概述

产品名称	Anti-PSME1抗体[EPR10968(B)]
描述	兔单克隆抗体[EPR10968(B)] to PSME1
宿主	Rabbit
经测试应用	适用于: WB, IHC-P 不适用于: ELISA, Flow Cyt, ICC/IF or IP
种属反应性	与反应: Human 预测可用于: Mouse, Rat 
免疫原	Synthetic peptide. This information is proprietary to Abcam and/or its suppliers.
阳性对照	Raji, MCF-7 and Jurkat cell lysates; Human pancreas and prostate tissues. WB: Wild-Type HEK-293T, MCF7, Jurkat cell lysate
常规说明	This product is a recombinant monoclonal antibody, which offers several advantages including: <ul style="list-style-type: none"> - High batch-to-batch consistency and reproducibility - Improved sensitivity and specificity - Long-term security of supply - Animal-free production For more information see here . Our RabMAb [®] technology is a patented hybridoma-based technology for making rabbit monoclonal antibodies. For details on our patents, please refer to RabMAb[®] patents .

性能

形式	Liquid
存放说明	Shipped at 4°C. Store at -20°C.
存储溶液	pH: 7.2 Preservative: 0.01% Sodium azide Constituents: 9% PBS, 40% Glycerol (glycerin, glycerine), 0.05% BSA, 50% Tissue culture supernatant
纯度	Protein A purified
克隆	单克隆

克隆编号 EPR10968(B)

同种型 IgG

应用

The Abpromise guarantee **Abpromise™** 承诺保证使用 ab155985 于以下的经测试应用

“应用说明”部分 下显示的仅为推荐的起始稀释度；实际最佳的稀释度/浓度应由使用者检定。

应用	Ab评论	说明
WB	★★★★★ (1)	1/1000 - 1/10000. Predicted molecular weight: 29 kDa.
IHC-P		1/50 - 1/100. Perform heat mediated antigen retrieval with citrate buffer pH 6 before commencing with IHC staining protocol.

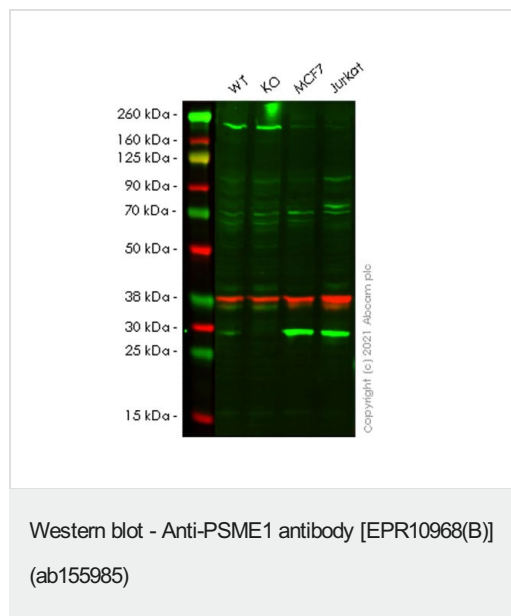
应用说明 Is unsuitable for ELISA, Flow Cyt, ICC/IF or IP.

靶标

功能 Implicated in immunoproteasome assembly and required for efficient antigen processing. The PA28 activator complex enhances the generation of class I binding peptides by altering the cleavage pattern of the proteasome.

序列相似性 Belongs to the PA28 family.

图片



All lanes : Anti-PSME1 antibody [EPR10968(B)] (ab155985) at 1/1000 dilution

Lane 1 : Wild-type HEK-293T (human embryonic kidney epithelial cell) whole cell lysate

Lane 2 : PSME1 knockout HEK-293T (human embryonic kidney epithelial cell) whole cell lysate

Lane 3 : MCF7 (human breast adenocarcinoma epithelial cell) whole cell lysate

Lane 4 : Jurkat (human T cell leukemia T lymphocyte) whole cell lysate

Lysates/proteins at 20 µg per lane.

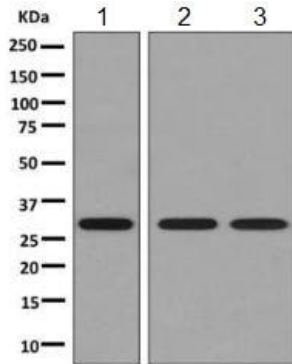
Secondary

All lanes : Goat anti-Mouse IgG H&L (IRDye® 680RD) preadsorbed ([ab216776](#)) at 1/10000 dilution

Predicted band size: 29 kDa

Blocking and diluting buffer: Intercept® (TBS) Blocking Buffer diluted with an equal volume of 0.1% TBS

Lanes 1-4: Merged signal (red and green). Green - ab155985 observed at 29 kDa. Red - loading control **ab8245** observed at 36 kDa.



Western blot - Anti-PSME1 antibody [EPR10968(B)] (ab155985)

All lanes : Anti-PSME1 antibody [EPR10968(B)] (ab155985) at 1/1000 dilution

Lane 1 : Raji cell lysate

Lane 2 : MCF-7 cell lysate

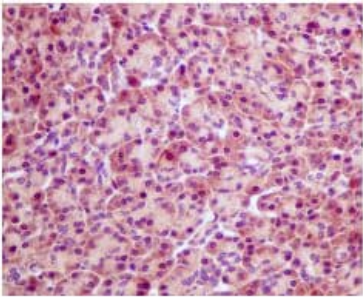
Lane 3 : Jurkat cell lysate

Lysates/proteins at 10 µg per lane.

Secondary

All lanes : Goat anti-rabbit HRP at 1/2000 dilution

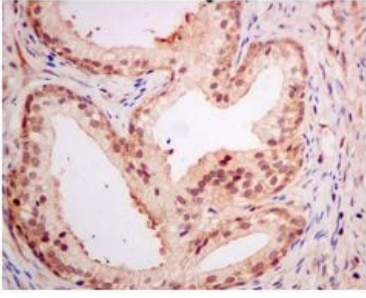
Predicted band size: 29 kDa



Immunohistochemistry (Formalin/PFA-fixed paraffin-embedded sections) - Anti-PSME1 antibody [EPR10968(B)] (ab155985)

Immunohistochemical analysis of paraffin-embedded Human pancreas tissue labeling PSME1 with ab155985 at 1/50 dilution.

Perform heat mediated antigen retrieval with citrate buffer pH 6 before commencing with IHC staining protocol.



Immunohistochemical analysis of paraffin-embedded Human prostate tissue labeling PSME1 with ab155985 at 1/50 dilution. Perform heat mediated antigen retrieval with citrate buffer pH 6 before commencing with IHC staining protocol.

Immunohistochemistry (Formalin/PFA-fixed paraffin-embedded sections) - Anti-PSME1 antibody [EPR10968(B)] (ab155985)

Why choose a recombinant antibody?



Anti-PSME1 antibody [EPR10968(B)] (ab155985)

Please note: All products are "FOR RESEARCH USE ONLY. NOT FOR USE IN DIAGNOSTIC PROCEDURES"

Our Abpromise to you: Quality guaranteed and expert technical support

- Replacement or refund for products not performing as stated on the datasheet
- Valid for 12 months from date of delivery
- Response to your inquiry within 24 hours
- We provide support in Chinese, English, French, German, Japanese and Spanish
- Extensive multi-media technical resources to help you
- We investigate all quality concerns to ensure our products perform to the highest standards

If the product does not perform as described on this datasheet, we will offer a refund or replacement. For full details of the Abpromise, please visit <https://www.abcam.cn/abpromise> or contact our technical team.

Terms and conditions

- Guarantee only valid for products bought direct from Abcam or one of our authorized distributors