



Anti-Protein CASP antibody [2A10] - BSA and Azide free ab54583

★★★★★ **9 Abreviews** **22 References** **7 图像**

概述

产品名称	Anti-Protein CASP抗体[2A10] - BSA and Azide free
描述	小鼠单克隆抗体[2A10] to蛋白CASP - BSA and Azide free
宿主	Mouse
经测试应用	适用于: IHC-P, WB, ICC/IF, Sandwich ELISA, Flow Cyt
种属反应性	与反应: Human, Recombinant fragment
免疫原	Recombinant fragment (GST-tag) corresponding to Human Protein CASP aa 500-650. NP_001904.2 Database link: Q13948
	 Run BLAST with  Run BLAST with
阳性对照	ICC/IF: HeLa cells. IHC-P: Human spleen tissue; human malignant lymphoma, diffuse large B tissue. Flow Cytometry: MCF7 cells. WB: Protein CASP transfected HEK-293T cell lysate. Recombinant Protein CASP protein.
常规说明	<p>This product was changed from ascites to tissue culture supernatant on 13th Feb 2019. Please note that the dilutions may need to be adjusted accordingly. If you have any questions, please do not hesitate to contact our scientific support team.</p> <p>The Life Science industry has been in the grips of a reproducibility crisis for a number of years. Abcam is leading the way in addressing this with our range of recombinant monoclonal antibodies and knockout edited cell lines for gold-standard validation. Please check that this product meets your needs before purchasing.</p> <p>If you have any questions, special requirements or concerns, please send us an inquiry and/or contact our Support team ahead of purchase. Recommended alternatives for this product can be found below, along with publications, customer reviews and Q&As</p>

性能

形式	Liquid
存放说明	Shipped at 4°C. Upon delivery aliquot and store at -20°C or -80°C. Avoid repeated freeze / thaw cycles.
存储溶液	pH: 7.40 Constituent: PBS

无载体	是
纯度	Tissue culture supernatant
克隆	单克隆
克隆编号	2A10
同种型	IgG1
轻链类型	kappa

应用

The Abpromise guarantee **Abpromise™**承诺保证使用ab54583于以下的经测试应用

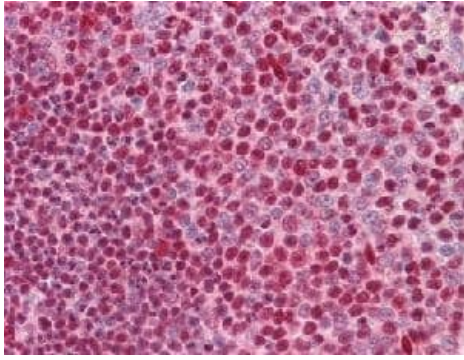
“应用说明”部分 下显示的仅为推荐的起始稀释度;实际最佳的稀释度/浓度应由使用者检定。

应用	Ab评论	说明
IHC-P	★★★★★ (1)	Use at an assay dependent concentration.
WB	★☆☆☆☆ (1)	Use at an assay dependent concentration. Predicted molecular weight: 77.5 kDa.
ICC/IF	★★★★★ (3)	Use at an assay dependent concentration.
Sandwich ELISA		Use at an assay dependent concentration.
Flow Cyt		Use at an assay dependent concentration. ab170190 - Mouse monoclonal IgG1, is suitable for use as an isotype control with this antibody.

靶标

功能	May be involved in intra-Golgi retrograde transport.
序列相似性	Belongs to the CASP family.
细胞定位	Golgi apparatus membrane.

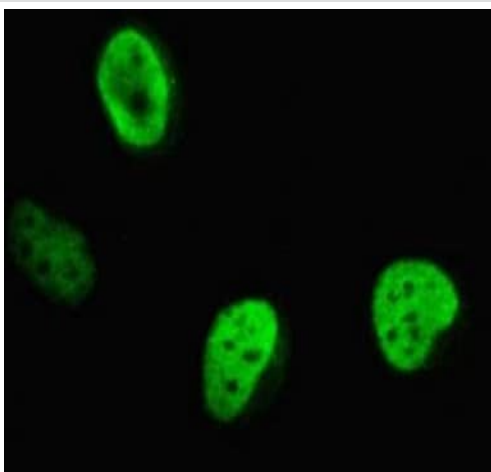
图片



Immunohistochemistry (Formalin/PFA-fixed paraffin-embedded sections) - Anti-Protein CASP antibody [2A10] - BSA and Azide free (ab54583)

Formalin-fixed, paraffin-embedded human spleen tissue stained for Protein CASP with ab54583 at 5 µg/ml in immunohistochemical analysis.

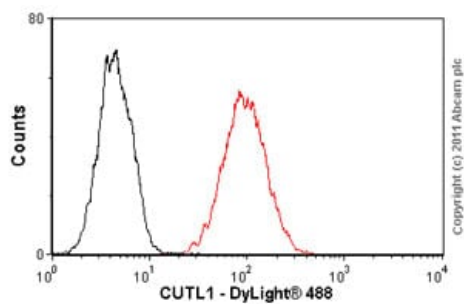
This image was generated using the ascites version of the product.



Immunocytochemistry/ Immunofluorescence - Anti-Protein CASP antibody [2A10] - BSA and Azide free (ab54583)

HeLa (human epithelial cell line from cervix adenocarcinoma) cells stained for Protein CASP (green) using ab54583 at 10 µg/ml in ICC/IF.

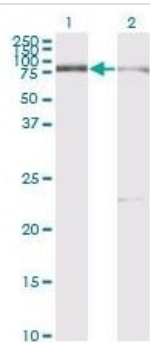
This image was generated using the ascites version of the product.



Flow Cytometry - Anti-Protein CASP antibody [2A10] - BSA and Azide free (ab54583)

Overlay histogram showing MCF7 (human breast adenocarcinoma cell line) cells stained with ab54583 (red line). The cells were fixed with 80% methanol (5 minutes) and then permeabilized with 0.1% PBS-Tween for 20 minutes. The cells were then incubated in 1x PBS / 10% normal goat serum / 0.3 M glycine to block non-specific protein-protein interactions followed by the antibody (ab54583, 1 µg/1 x 10⁶ cells) for 30 minutes at 22°C. The secondary antibody used was DyLight® 488 goat anti-mouse IgG (H+L) ([ab96879](#)) at 1/500 dilution for 30 minutes at 22°C. Isotype control antibody (black line) was mouse IgG1 [ICIGG1] ([ab91353](#), 2 µg/1 x 10⁶ cells) used under the same conditions. Acquisition of >5,000 events was performed. This antibody gave a positive signal in MCF7 cells fixed with 4% paraformaldehyde (10 minutes)/permeabilized in 0.1% PBS-Tween used under the same conditions.

This image was generated using the ascites version of the product.



Western blot - Anti-Protein CASP antibody [2A10] - BSA and Azide free (ab54583)

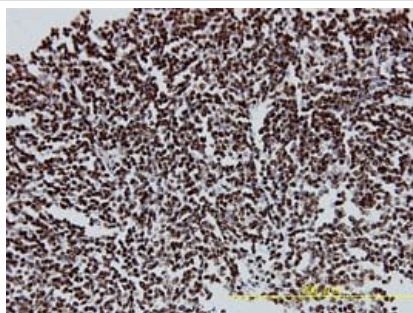
All lanes : Anti-Protein CASP antibody [2A10] - BSA and Azide free (ab54583) at 5 µg/ml

Lane 1 : Protein CASP transfected HEK-293T (human epithelial cell line from embryonic kidney transformed with large T antigen) cell lysate

Lane 2 : Non-transfected HEK-293T (human epithelial cell line from embryonic kidney transformed with large T antigen) cell lysate

Predicted band size: 77.5 kDa

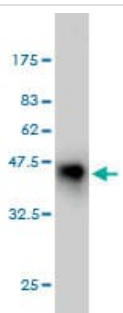
This image was generated using the ascites version of the product.



Immunohistochemistry (Formalin/PFA-fixed paraffin-embedded sections) - Anti-Protein CASP antibody [2A10] - BSA and Azide free (ab54583)

Formalin-fixed, paraffin-embedded human malignant lymphoma, diffuse large B tissue stained for Protein CASP with ab54583 at 5 µg/ml in immunohistochemical analysis.

This image was generated using the ascites version of the product.



Western blot - Anti-Protein CASP antibody [2A10] - BSA and Azide free (ab54583)

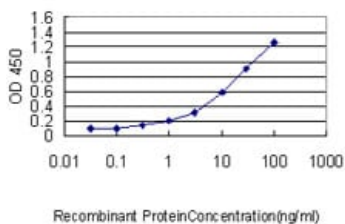
Anti-Protein CASP antibody [2A10] - BSA and Azide free (ab54583) at 5 µg/ml + Tagged recombinant Protein CASP protein

Predicted band size: 77.5 kDa

This antibody has only been tested in WB against the recombinant fragment used as immunogen. We have no data on the detection of endogenous protein.

Expected MW 38 kDa.

This image was generated using the ascites version of the product.



Detection limit of ab54583 is approximately 0.03 ng/ml as a capture antibody.

This image was generated using the ascites version of the product.

Sandwich ELISA - Anti-Protein CASP antibody
[2A10] - BSA and Azide free (ab54583)

Please note: All products are "FOR RESEARCH USE ONLY. NOT FOR USE IN DIAGNOSTIC PROCEDURES"

Our Abpromise to you: Quality guaranteed and expert technical support

- Replacement or refund for products not performing as stated on the datasheet
- Valid for 12 months from date of delivery
- Response to your inquiry within 24 hours
- We provide support in Chinese, English, French, German, Japanese and Spanish
- Extensive multi-media technical resources to help you
- We investigate all quality concerns to ensure our products perform to the highest standards

If the product does not perform as described on this datasheet, we will offer a refund or replacement. For full details of the Abpromise, please visit <https://www.abcam.cn/abpromise> or contact our technical team.

Terms and conditions

- Guarantee only valid for products bought direct from Abcam or one of our authorized distributors