

Anti-Proteasome subunit beta type 2/PSMB2 antibody [MCP165] ab22650

★★★★★ [1 Abreviews](#) [4 References](#) [4 图像](#)

概述

产品名称	Anti-Proteasome subunit beta type 2/PSMB2抗体[MCP165]
描述	小鼠单克隆抗体[MCP165] to Proteasome subunit beta type 2/PSMB2
宿主	Mouse
经测试应用	适用于: Flow Cyt, IHC-P, WB 不适用于: IP
种属反应性	与反应: Human
免疫原	Full length protein corresponding to Human Proteasome subunit beta type 2/PSMB2. Dinitrophenylated proteasomes Database link: P49721
阳性对照	WB: HeLa cell lysate; human ciliary body lysate. IHC-P: Human lymphoid tissue. Flow cyt: HeLa cells.
常规说明	<p>The Life Science industry has been in the grips of a reproducibility crisis for a number of years. Abcam is leading the way in addressing this with our range of recombinant monoclonal antibodies and knockout edited cell lines for gold-standard validation. Please check that this product meets your needs before purchasing.</p> <p>If you have any questions, special requirements or concerns, please send us an inquiry and/or contact our Support team ahead of purchase. Recommended alternatives for this product can be found below, along with publications, customer reviews and Q&As</p>

性能

形式	Liquid
存放说明	Shipped at 4°C. Store at +4°C short term (1-2 weeks). Upon delivery aliquot. Store at -20°C or -80°C. Avoid freeze / thaw cycle.
存储溶液	Preservative: 0.032% Sodium azide Constituents: 0.316% Tris HCl, 0.58% Sodium chloride
纯度	Protein G purified
克隆	单克隆
克隆编号	MCP165

应用

The Abpromise guarantee **Abpromise™** 承诺保证使用 ab22650 于以下的经测试应用

“应用说明”部分 下显示的仅为推荐的起始稀释度;实际最佳的稀释度/浓度应由使用者检定。

应用	Ab评论	说明
Flow Cyt		Use 1 µg for 10 ⁶ cells. ab170190 - Mouse monoclonal IgG1, is suitable for use as an isotype control with this antibody.
IHC-P		Use a concentration of 1 µg/ml. Perform heat mediated antigen retrieval with citrate buffer pH 6 before commencing with IHC staining protocol.
WB	★★★★★ (1)	1/1000. Detects a band of approximately 28 kDa (predicted molecular weight: 23 kDa).

应用说明

Is unsuitable for IP.

靶标

功能

The proteasome is a multicatalytic proteinase complex which is characterized by its ability to cleave peptides with Arg, Phe, Tyr, Leu, and Glu adjacent to the leaving group at neutral or slightly basic pH. The proteasome has an ATP-dependent proteolytic activity. This subunit has a trypsin-like activity.

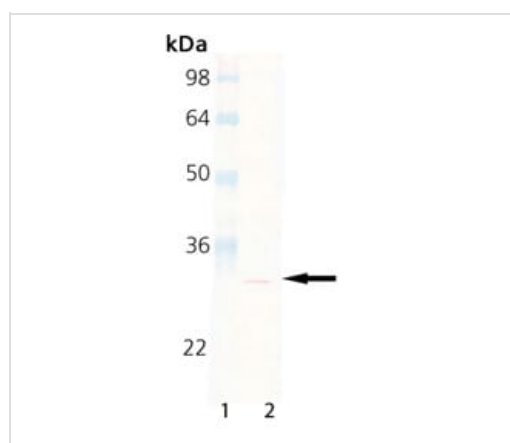
序列相似性

Belongs to the peptidase T1B family.

细胞定位

Cytoplasm. Nucleus.

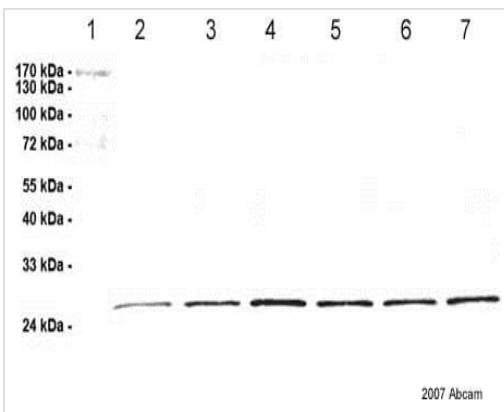
图片



Anti-Proteasome subunit beta type 2/PSMB2 antibody [MCP165]
(ab22650) at 1/1000 dilution + HeLa cell lysate

Predicted band size: 23 kDa

Western blot - Anti-Proteasome subunit beta type
2/PSMB2 antibody [MCP165] (ab22650)



Western blot - Anti-Proteasome subunit beta type 2/PSMB2 antibody [MCP165] (ab22650)

This image is courtesy of an Abreview submitted by Dr Matthias Zenkel

Lane 1 : Protein Marker IV

Lanes 2-7 : Anti-Proteasome subunit beta type 2/PSMB2 antibody [MCP165] (ab22650) at 1/1000 dilution

Lane 1 : Protein Marker IV

Lanes 2 & 4 & 6 : Protein extract from ciliary body of diseased human donor at 2 μ g

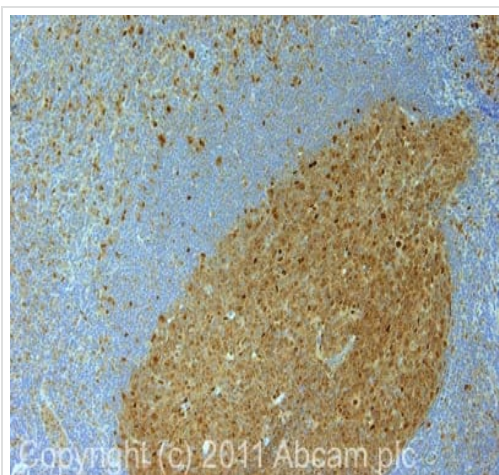
Lanes 3 & 5 & 7 : Protein extract from ciliary body of normal human donor at 2 μ g

Secondary

Lanes 2-7 : HRP conjugated goat anti mouse antibody

Predicted band size: 23 kDa

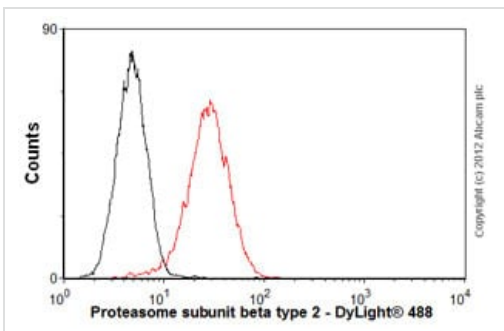
Observed band size: 27 kDa



Immunohistochemistry (Formalin/PFA-fixed paraffin-embedded sections) - Anti-Proteasome subunit beta type 2/PSMB2 antibody [MCP165] (ab22650)

IHC image of ab22650 staining in human normal lymphoid formalin fixed paraffin embedded tissue section, performed on a Leica BondTM system using the standard protocol F. The section was pre-treated using heat mediated antigen retrieval with sodium citrate buffer (pH6, epitope retrieval solution 1) for 20 mins. The section was then incubated with ab22650, 1 μ g/ml, for 15 mins at room temperature and detected using an HRP conjugated compact polymer system. DAB was used as the chromogen. The section was then counterstained with haematoxylin and mounted with DPX.

For other IHC staining systems (automated and non-automated) customers should optimize variable parameters such as antigen retrieval conditions, primary antibody concentration and antibody incubation times.



Flow Cytometry - Anti-Proteasome subunit beta type 2/PSMB2 antibody [MCP165] (ab22650)

Overlay histogram showing HeLa cells stained with ab22650 (red line). The cells were fixed with 80% methanol (5 min) and then permeabilized with 0.1% PBS-Tween for 20 min. The cells were then incubated in 1x PBS / 10% normal goat serum / 0.3M glycine to block non-specific protein-protein interactions followed by the antibody (ab22650, 1 μ g/1x10⁶ cells) for 30 min at 22°C. The secondary antibody used was DyLight[®] 488 goat anti-mouse IgG (H+L) ([ab96879](#)) at 1/500 dilution for 30 min at 22°C. Isotype control antibody (black line) was mouse IgG1 [ICIGG1] ([ab91353](#), 2 μ g/1x10⁶ cells) used under the same conditions. Acquisition of

>5,000 events was performed.

Please note: All products are "FOR RESEARCH USE ONLY. NOT FOR USE IN DIAGNOSTIC PROCEDURES"

Our Abpromise to you: Quality guaranteed and expert technical support

- Replacement or refund for products not performing as stated on the datasheet
- Valid for 12 months from date of delivery
- Response to your inquiry within 24 hours

- We provide support in Chinese, English, French, German, Japanese and Spanish
- Extensive multi-media technical resources to help you
- We investigate all quality concerns to ensure our products perform to the highest standards

If the product does not perform as described on this datasheet, we will offer a refund or replacement. For full details of the Abpromise, please visit <https://www.abcam.cn/abpromise> or contact our technical team.

Terms and conditions

- Guarantee only valid for products bought direct from Abcam or one of our authorized distributors