


Anti-Proteasome subunit beta type 2/PSMB2 antibody [EPR8826(2)(B)] ab166628

 **RabMAb**

★★★★★ **5 Abreviews** **2 References** **6 图像**

概述

产品名称	Anti-Proteasome subunit beta type 2/PSMB2抗体[EPR8826(2)(B)]
描述	兔单克隆抗体[EPR8826(2)(B)] to Proteasome subunit beta type 2/PSMB2
宿主	Rabbit
经测试应用	适用于: Flow Cyt (Intra), WB, IHC-P
种属反应性	与反应: Human 预测可用于: Mouse, Rat 
免疫原	Synthetic peptide within Human Proteasome subunit beta type 2/PSMB2. The exact sequence is proprietary. Database link: P49721
阳性对照	Jurkat, HepG2, HeLa and LoVo cell lysates; Human gastric carcinoma and Human liver tissues; Permeabilized Jurkat cells; Immunoprecipitation pellet from HeLa cell lysate.
常规说明	This product is a recombinant monoclonal antibody, which offers several advantages including: <ul style="list-style-type: none"> - High batch-to-batch consistency and reproducibility - Improved sensitivity and specificity - Long-term security of supply - Animal-free production For more information see here . Our RabMAb [®] technology is a patented hybridoma-based technology for making rabbit monoclonal antibodies. For details on our patents, please refer to RabMAb[®] patents .

性能

形式	Liquid
存放说明	Shipped at 4°C. Upon delivery aliquot and store at -20°C. Avoid freeze / thaw cycles.
存储溶液	pH: 7.2 Preservative: 0.01% Sodium azide Constituents: 9% PBS, 40% Glycerol (glycerin, glycerine), 0.05% BSA, 50% Tissue culture supernatant

纯度	Tissue culture supernatant
克隆	单克隆
克隆编号	EPR8826(2)(B)
同种型	IgG

应用

The Abpromise guarantee **Abpromise™**承诺保证使用ab166628于以下的经测试应用

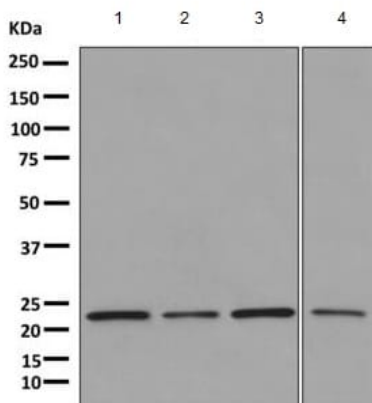
“应用说明”部分 下显示的仅为推荐的起始稀释度;实际最佳的稀释度/浓度应由使用者检定。

应用	Ab评论	说明
Flow Cyt (Intra)		1/100 - 1/500. ab172730 - Rabbit monoclonal IgG, is suitable for use as an isotype control with this antibody.
WB	★★★★★ (2)	1/1000 - 1/10000. Predicted molecular weight: 23 kDa.
IHC-P		1/100 - 1/250. Perform heat mediated antigen retrieval with citrate buffer pH 6 before commencing with IHC staining protocol.

靶标

功能	The proteasome is a multicatalytic proteinase complex which is characterized by its ability to cleave peptides with Arg, Phe, Tyr, Leu, and Glu adjacent to the leaving group at neutral or slightly basic pH. The proteasome has an ATP-dependent proteolytic activity. This subunit has a trypsin-like activity.
序列相似性	Belongs to the peptidase T1B family.
细胞定位	Cytoplasm. Nucleus.

图片



Western blot - Anti-Proteasome subunit beta type 2/PSMB2 antibody [EPR8826(2)(B)] (ab166628)

All lanes : Anti-Proteasome subunit beta type 2/PSMB2 antibody [EPR8826(2)(B)] (ab166628) at 1/1000 dilution

Lane 1 : Jurkat cell lysate

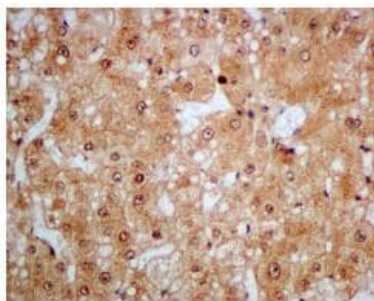
Lane 2 : HepG2 cell lysate

Lane 3 : HeLa cell lysate

Lane 4 : LoVo cell lysate

Lysates/proteins at 10 µg per lane.

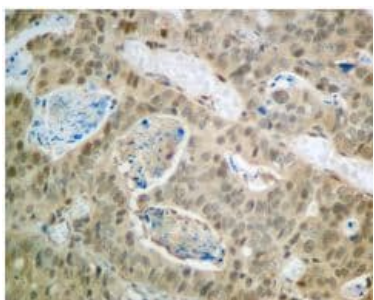
Predicted band size: 23 kDa



Immunohistochemistry (Formalin/PFA-fixed paraffin-embedded sections) - Anti-Proteasome subunit beta type 2/PSMB2 antibody [EPR8826(2)(B)] (ab166628)

Immunohistochemical analysis of paraffin embedded Human liver tissue labeling Proteasome subunit beta type 2/PSMB2 with ab166628 at a 1/100 dilution.

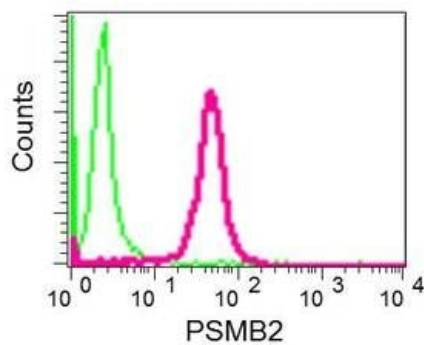
Perform heat mediated antigen retrieval with citrate buffer pH 6 before commencing with IHC staining protocol.



Immunohistochemistry (Formalin/PFA-fixed paraffin-embedded sections) - Anti-Proteasome subunit beta type 2/PSMB2 antibody [EPR8826(2)(B)] (ab166628)

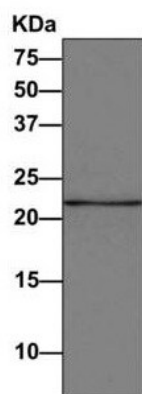
Immunohistochemical analysis of paraffin embedded Human gastric carcinoma tissue labeling Proteasome subunit beta type 2/PSMB2 with ab166628 at a 1/100 dilution.

Perform heat mediated antigen retrieval with citrate buffer pH 6 before commencing with IHC staining protocol.



Intracellular flow cytometric analysis of permeabilized Jurkat cells using ab166628 at a 1/100 dilution (red) or a Rabbit IgG (negative) (green).

Flow Cytometry (Intracellular) - Anti-Proteasome subunit beta type 2/PSMB2 antibody [EPR8826(2)(B)] (ab166628)



Anti-Proteasome subunit beta type 2/PSMB2 antibody [EPR8826(2)(B)] (ab166628) at 1/1000 dilution + Immunoprecipitation pellet from HeLa (Human cervix adenocarcinoma epithelial cell) whole cell lysate at 10 µg

Secondary

HRP-conjugated anti-Rabbit IgG preferentially detecting the non-reduced form of Rabbit IgG

Predicted band size: 23 kDa

Western blot - Anti-Proteasome subunit beta type 2/PSMB2 antibody [EPR8826(2)(B)] (ab166628)

Why choose a recombinant antibody?



Research with confidence
Consistent and reproducible results



Long-term and scalable supply
Recombinant technology



Success from the first experiment
Confirmed specificity



Ethical standards compliant
Animal-free production

Anti-Proteasome subunit beta type 2/PSMB2
antibody [EPR8826(2)(B)] (ab166628)

Please note: All products are "FOR RESEARCH USE ONLY. NOT FOR USE IN DIAGNOSTIC PROCEDURES"

Our Abpromise to you: Quality guaranteed and expert technical support

- Replacement or refund for products not performing as stated on the datasheet
- Valid for 12 months from date of delivery
- Response to your inquiry within 24 hours
- We provide support in Chinese, English, French, German, Japanese and Spanish
- Extensive multi-media technical resources to help you
- We investigate all quality concerns to ensure our products perform to the highest standards

If the product does not perform as described on this datasheet, we will offer a refund or replacement. For full details of the Abpromise, please visit <https://www.abcam.cn/abpromise> or contact our technical team.

Terms and conditions

- Guarantee only valid for products bought direct from Abcam or one of our authorized distributors