


Anti-Proteasome subunit alpha type 6 antibody ab97563

1 References **8 图像**

概述

产品名称	Anti-Proteasome subunit alpha type 6抗体
描述	兔多克隆抗体to Proteasome subunit alpha type 6
宿主	Rabbit
经测试应用	适用于: WB, IHC-P, ICC/IF
种属反应性	与反应: Mouse, Rat, Human 预测可用于: Pig, Zebrafish 
免疫原	Recombinant fragment corresponding to Human Proteasome subunit alpha type 6 aa 57-244. Database link: P60900
阳性对照	WB: 293T, A431, H1299, HeLa, HepG2 and MOLT4 cell lysates IF: A431 cells IHC-P: H1299 xenograft
常规说明	<p>The Life Science industry has been in the grips of a reproducibility crisis for a number of years. Abcam is leading the way in addressing this with our range of recombinant monoclonal antibodies and knockout edited cell lines for gold-standard validation. Please check that this product meets your needs before purchasing.</p> <p>If you have any questions, special requirements or concerns, please send us an inquiry and/or contact our Support team ahead of purchase. Recommended alternatives for this product can be found below, along with publications, customer reviews and Q&As</p>

性能

形式	Liquid
存放说明	Shipped at 4°C. Upon delivery aliquot and store at -20°C or -80°C. Avoid repeated freeze / thaw cycles.
存储溶液	pH: 7.00 Preservative: 0.01% Thimerosal (merthiolate) Constituents: 1.21% Tris, 0.75% Glycine, 20% Glycerol (glycerin, glycerine)
纯度	Immunogen affinity purified
克隆	多克隆
同种型	IgG

应用

The Abpromise guarantee Abpromise™承诺保证使用ab97563于以下的经测试应用

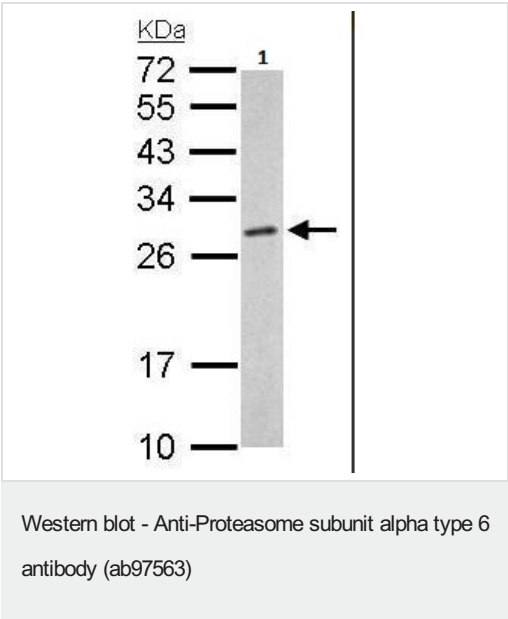
“应用说明”部分 下显示的仅为推荐的起始稀释度;实际最佳的稀释度/浓度应由使用者检定。

应用	Ab评论	说明
WB		1/500 - 1/3000. Predicted molecular weight: 27 kDa.
IHC-P		1/100 - 1/500.
ICC/IF		1/100 - 1/200.

靶标

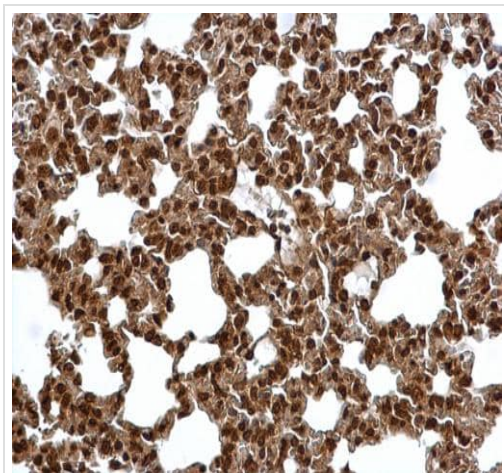
功能	The proteasome is a multicatalytic proteinase complex which is characterized by its ability to cleave peptides with Arg, Phe, Tyr, Leu, and Glu adjacent to the leaving group at neutral or slightly basic pH. The proteasome has an ATP-dependent proteolytic activity.
序列相似性	Belongs to the peptidase T1A family.
细胞定位	Cytoplasm. Nucleus.

图片



Anti-Proteasome subunit alpha type 6 antibody (ab97563) at 1/1000 dilution + mouse liver lysate at 50 µg

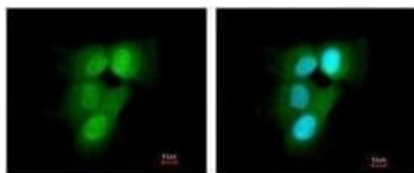
Predicted band size: 27 kDa



Immunohistochemistry (Formalin/PFA-fixed paraffin-embedded sections) - Anti-Proteasome subunit alpha type 6 antibody (ab97563)

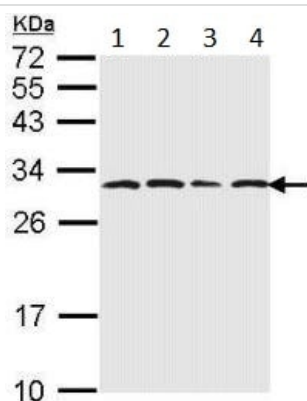
Immunohistochemical analysis of paraffin-embedded mouse lung tissue staining Proteasome subunit alpha type 6 with ab97563 at 1/500 dilution.

Antigen Retrieval: Trilogy™ (EDTA based, pH 8.0) buffer, 15min.



Immunocytochemistry/ Immunofluorescence - Anti-Proteasome subunit alpha type 6 antibody (ab97563)

ab97563, at a 1/200 dilution, staining Proteasome subunit alpha type 6 in paraformaldehyde-fixed A431 cells by Immunofluorescence analysis. Right image is merged with a DNA probe.



Western blot - Anti-Proteasome subunit alpha type 6 antibody (ab97563)

All lanes : Anti-Proteasome subunit alpha type 6 antibody (ab97563) at 1/1000 dilution

Lane 1 : 293T whole cell lysate

Lane 2 : A431 whole cell lysate

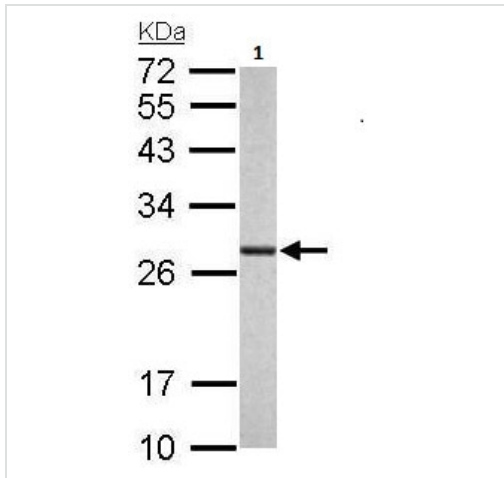
Lane 3 : H1299 whole cell lysate

Lane 4 : HeLa whole cell lysate

Lysates/proteins at 30 µg per lane.

Predicted band size: 27 kDa

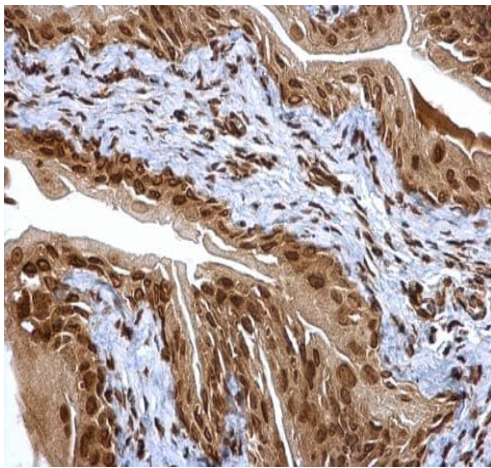
12% SDS PAGE



Western blot - Anti-Proteasome subunit alpha type 6 antibody (ab97563)

Anti-Proteasome subunit alpha type 6 antibody (ab97563) at 1/1000 dilution + rat liver lysate at 50 µg

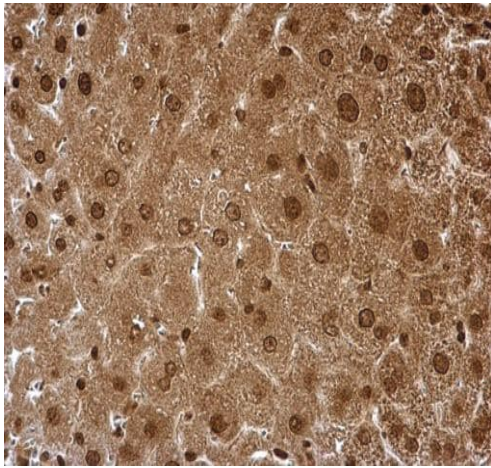
Predicted band size: 27 kDa



Immunohistochemistry (Formalin/PFA-fixed paraffin-embedded sections) - Anti-Proteasome subunit alpha type 6 antibody (ab97563)

Immunohistochemical analysis of paraffin-embedded mouse urinary bladder tissue staining Proteasome subunit alpha type 6 with ab97563 at 1/500 dilution.

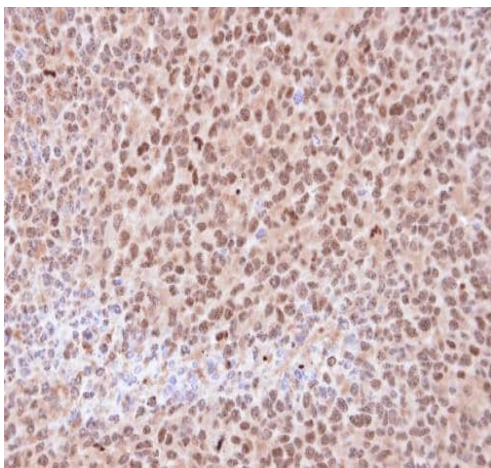
Antigen Retrieval: Trilogy™ (EDTA based, pH 8.0) buffer, 15min.



Immunohistochemistry (Formalin/PFA-fixed paraffin-embedded sections) - Anti-Proteasome subunit alpha type 6 antibody (ab97563)

Immunohistochemical analysis of paraffin-embedded mouse liver tissue staining Proteasome subunit alpha type 6 with ab97563 at 1/500 dilution.

Antigen Retrieval: Trilogy™ (EDTA based, pH 8.0) buffer, 15min.



Immunohistochemistry (Formalin/PFA-fixed paraffin-embedded sections) - Anti-Proteasome subunit alpha type 6 antibody (ab97563)

ab97563, at a 1/100 dilution, staining Proteasome subunit alpha type 6 in paraffin-embedded H1299 xenograft by Immunohistochemical analysis.

Please note: All products are "FOR RESEARCH USE ONLY. NOT FOR USE IN DIAGNOSTIC PROCEDURES"

Our Abpromise to you: Quality guaranteed and expert technical support

- Replacement or refund for products not performing as stated on the datasheet
- Valid for 12 months from date of delivery
- Response to your inquiry within 24 hours

- We provide support in Chinese, English, French, German, Japanese and Spanish
- Extensive multi-media technical resources to help you
- We investigate all quality concerns to ensure our products perform to the highest standards

If the product does not perform as described on this datasheet, we will offer a refund or replacement. For full details of the Abpromise, please visit <https://www.abcam.cn/abpromise> or contact our technical team.

Terms and conditions

- Guarantee only valid for products bought direct from Abcam or one of our authorized distributors