

Anti-Proteasome 20S LMP2 antibody [EPR13784] ab187645

敲除验证
重组
RabMAb

[1 References](#)
[7 图像](#)

概述

产品名称	Anti-Proteasome 20S LMP2抗体[EPR13784]
描述	兔单克隆抗体[EPR13784] to Proteasome 20S LMP2
宿主	Rabbit
经测试应用	适用于: Flow Cyt (Intra), WB, ICC/IF, IP
种属反应性	与反应: Human
免疫原	Synthetic peptide. This information is proprietary to Abcam and/or its suppliers.
阳性对照	Ramos, Raji, HL60 and A431 cell lysates; A431 and Raji cells.
常规说明	<p>This product is a recombinant monoclonal antibody, which offers several advantages including:</p> <ul style="list-style-type: none"> - High batch-to-batch consistency and reproducibility - Improved sensitivity and specificity - Long-term security of supply - Animal-free production <p>For more information see here.</p> <p>Our RabMAb[®] technology is a patented hybridoma-based technology for making rabbit monoclonal antibodies. For details on our patents, please refer to RabMAb[®] patents.</p>

性能

形式	Liquid
存放说明	Shipped at 4°C. Store at +4°C short term (1-2 weeks). Upon delivery aliquot. Store at -20°C long term. Avoid freeze / thaw cycle.
存储溶液	<p>pH: 7.2</p> <p>Preservative: 0.01% Sodium azide</p> <p>Constituents: 59% PBS, 40% Glycerol (glycerin, glycerine), 0.05% BSA</p>
纯度	Protein A purified
克隆	单克隆
克隆编号	EPR13784
同种型	IgG

应用

The Abpromise guarantee **Abpromise™**承诺保证使用ab187645于以下的经测试应用

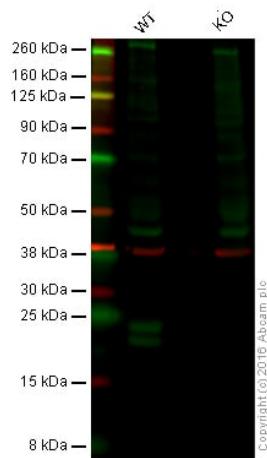
“应用说明”部分 下显示的仅为推荐的起始稀释度;实际最佳的稀释度/浓度应由使用者检定。

应用	Ab评论	说明
Flow Cyt (Intra)		1/170. ab172730 - Rabbit monoclonal IgG, is suitable for use as an isotype control with this antibody.
WB		1/1000 - 1/10000. Detects a band of approximately 21 kDa (predicted molecular weight: 23 kDa).
ICC/IF		1/100.
IP		1/30 - 1/50.

靶标

功能	The proteasome is a multicatalytic proteinase complex which is characterized by its ability to cleave peptides with Arg, Phe, Tyr, Leu, and Glu adjacent to the leaving group at neutral or slightly basic pH. The proteasome has an ATP-dependent proteolytic activity. This subunit is involved in antigen processing to generate class I binding peptides. Replacement of PSMB6 by PSMB9 increases the capacity of the immunoproteasome to cleave model peptides after hydrophobic and basic residues.
序列相似性	Belongs to the peptidase T1B family.
发展阶段	Highly expressed in immature dendritic cells (at protein level).
翻译后修饰	Autocleaved. The resulting N-terminal Thr residue of the mature subunit is responsible for the nucleophile proteolytic activity.
细胞定位	Cytoplasm. Nucleus.

图片



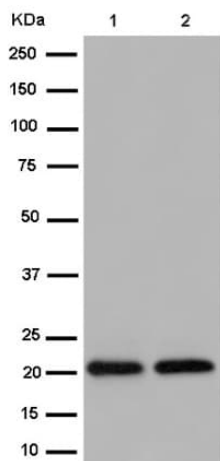
Western blot - Anti-Proteasome 20S LMP2 antibody [EPR13784] (ab187645)

Lane 1: Wild-type HAP1 cell lysate (20 µg)

Lane 2: Proteasome 20S LMP2 knockout HAP1 cell lysate (20 µg)

Lanes 1 - 2: Merged signal (red and green). Green - ab187645 observed at 22 and 24 kDa. Red - loading control, **ab8245**, observed at 37 kDa.

ab187645 was shown to recognize Proteasome 20S LMP2 when Proteasome 20S LMP2 knockout samples were used, along with additional cross-reactive bands. Wild-type and Proteasome 20S LMP2 knockout samples were subjected to SDS-PAGE. ab187645 and **ab8245** (loading control to GAPDH) were diluted 1/1000 and 1/10000 and incubated overnight at 4°C. Blots were developed with Goat anti-Rabbit IgG H&L (IRDye® 800CW) preadsorbed **ab216773** and Goat anti-Mouse IgG H&L (IRDye® 680RD) preadsorbed **ab216776** secondary antibodies at 1/10000 dilution for 1 hour at room temperature before imaging.



Western blot - Anti-Proteasome 20S LMP2 antibody [EPR13784] (ab187645)

All lanes : Anti-Proteasome 20S LMP2 antibody [EPR13784] (ab187645) at 1/10000 dilution

Lane 1 : Ramos cell lysate

Lane 2 : Raji cell lysate

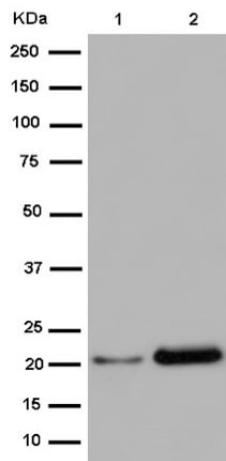
Lysates/proteins at 20 µg per lane.

Secondary

All lanes : Goat Anti-Rabbit IgG, (H+L), Peroxidase conjugate at 1/1000 dilution

Predicted band size: 23 kDa

Observed band size: 21 kDa



Western blot - Anti-Proteasome 20S LMP2 antibody [EPR13784] (ab187645)

All lanes : Anti-Proteasome 20S LMP2 antibody [EPR13784] (ab187645) at 1/2000 dilution

Lane 1 : HL-60 cell lysate

Lane 2 : A431 cell lysate

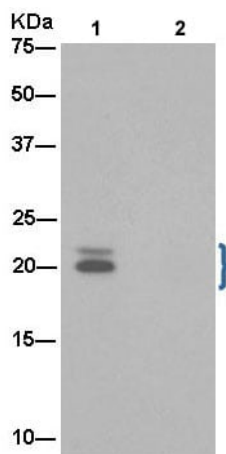
Lysates/proteins at 20 µg per lane.

Secondary

All lanes : Goat Anti-Rabbit IgG, (H+L), Peroxidase conjugate at 1/1000 dilution

Predicted band size: 23 kDa

Observed band size: 21 kDa

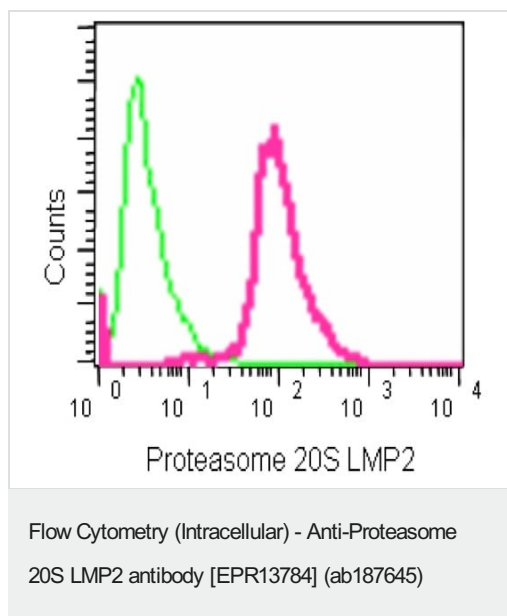


Immunoprecipitation - Anti-Proteasome 20S LMP2 antibody [EPR13784] (ab187645)

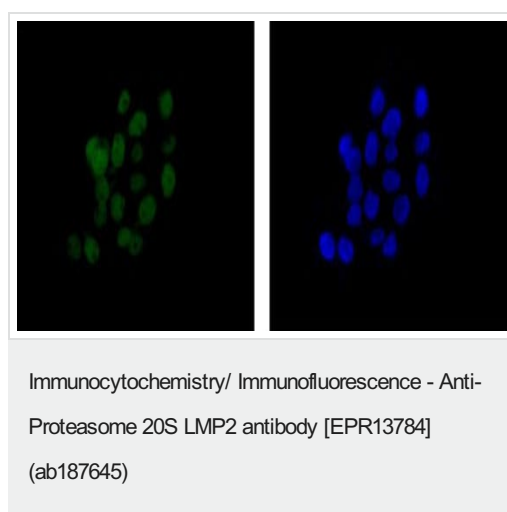
Western blot analysis of Proteasome 20S LMP2 in Raji cell lysate immunoprecipitated using ab187645 at 1/50 (Lane 1). Lane 2: PBS instead of Raji lysate.

Secondary antibody: Anti-Rabbit IgG (HRP), specific to the non-reduced form of IgG at 1/1500 dilution.

Based on the sequence analysis by BLAST, ab187645 recognizes two isoforms with the predicted MWs of 22kDa and 23kDa respectively.



Intracellular flow cytometric analysis of 2% paraformaldehyde-fixed Raji cells labeling Proteasome 20S LMP2 with ab187645 at 1/170 dilution compared to a Rabbit monoclonal IgG isotype control, followed by Goat anti rabbit IgG (FITC) secondary antibody at 1/150 dilution.



Immunofluorescent analysis of 4% paraformaldehyde-fixed A431 cells labeling Proteasome 20S LMP2 with ab187645 at 1/100 dilution. Counter stained with Dapi (blue).

Why choose a recombinant antibody?

<p>Research with confidence Consistent and reproducible results</p>	<p>Long-term and scalable supply Recombinant technology</p>
<p>Success from the first experiment Confirmed specificity</p>	<p>Ethical standards compliant Animal-free production</p>

Anti-Proteasome 20S LMP2 antibody [EPR13784] (ab187645)

Please note: All products are "FOR RESEARCH USE ONLY. NOT FOR USE IN DIAGNOSTIC PROCEDURES"

Our Abpromise to you: Quality guaranteed and expert technical support

- Replacement or refund for products not performing as stated on the datasheet
- Valid for 12 months from date of delivery
- Response to your inquiry within 24 hours

- We provide support in Chinese, English, French, German, Japanese and Spanish
- Extensive multi-media technical resources to help you
- We investigate all quality concerns to ensure our products perform to the highest standards

If the product does not perform as described on this datasheet, we will offer a refund or replacement. For full details of the Abpromise, please visit <https://www.abcam.cn/abpromise> or contact our technical team.

Terms and conditions

- Guarantee only valid for products bought direct from Abcam or one of our authorized distributors