


### Anti-Proteasome 20S LMP2 antibody ab3328

★★★★★ [5 Abreviews](#) [36 References](#) [2 图像](#)

#### 概述

产品名称	Anti-Proteasome 20S LMP2抗体
描述	兔多克隆抗体to Proteasome 20S LMP2
宿主	Rabbit
经测试应用	适用于: WB
种属反应性	与反应: Mouse, Human 预测可用于: Rat, Cow 
免疫原	Synthetic peptide corresponding to Human Proteasome 20S LMP2 aa 206-219. Sequence: RVILGNELPKFYDE  Database link: <a href="#">P28065</a> (Peptide available as <a href="#">ab4944</a> )  <a href="#">Run BLAST with</a> <a href="#">Run BLAST with</a>
阳性对照	WB: HeLa cells, mouse embryo fibroblast cells
常规说明	<p>The Life Science industry has been in the grips of a reproducibility crisis for a number of years. Abcam is leading the way in addressing this with our range of recombinant monoclonal antibodies and knockout edited cell lines for gold-standard validation. Please check that this product meets your needs before purchasing.</p> <p>If you have any questions, special requirements or concerns, please send us an inquiry and/or contact our Support team ahead of purchase. Recommended alternatives for this product can be found below, along with publications, customer reviews and Q&amp;As</p>

#### 性能

形式	Liquid
存放说明	Shipped at 4°C. Store at +4°C short term (1-2 weeks). Upon delivery aliquot. Store at -20°C or -80°C. Avoid freeze / thaw cycle.
存储溶液	Constituents: 0.1% BSA, 99% PBS
纯度	Immunogen affinity purified
克隆	多克隆

## 应用

## The Abpromise guarantee

Abpromise™承诺保证使用ab3328于以下的经测试应用

“应用说明”部分 下显示的仅为推荐的起始稀释度;实际最佳的稀释度/浓度应由使用者检定。

应用	Ab评论	说明
WB	★★★★☆ (5)	Use a concentration of 1 µg/ml. (worked at 1/2000 (PMID 17114438))

## 靶标

## 功能

The proteasome is a multicatalytic proteinase complex which is characterized by its ability to cleave peptides with Arg, Phe, Tyr, Leu, and Glu adjacent to the leaving group at neutral or slightly basic pH. The proteasome has an ATP-dependent proteolytic activity. This subunit is involved in antigen processing to generate class I binding peptides. Replacement of PSMB6 by PSMB9 increases the capacity of the immunoproteasome to cleave model peptides after hydrophobic and basic residues.

## 序列相似性

Belongs to the peptidase T1B family.

## 发展阶段

Highly expressed in immature dendritic cells (at protein level).

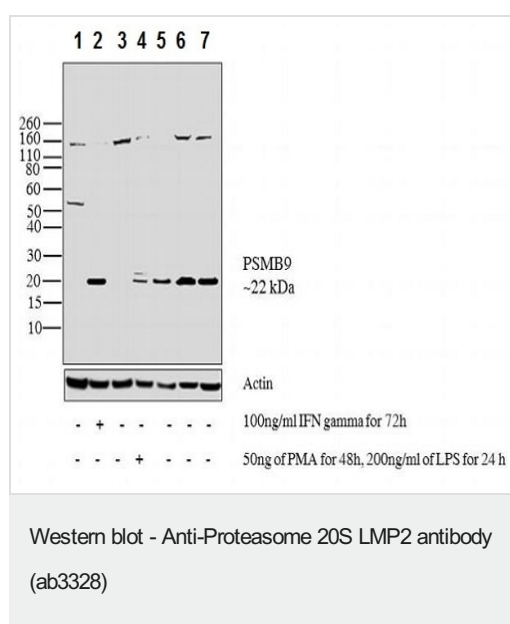
## 翻译后修饰

Autocleaved. The resulting N-terminal Thr residue of the mature subunit is responsible for the nucleophile proteolytic activity.

## 细胞定位

Cytoplasm. Nucleus.

## 图片



**All lanes :** Anti-Proteasome 20S LMP2 antibody (ab3328) at 2 µg/ml

**Lane 1 :** HeLa (human epithelial cell line from cervix adenocarcinoma) whole cell lysate

**Lane 2 :** HeLa (human epithelial cell line from cervix adenocarcinoma) treated with 100 ng/mL IFN gamma for 72 hours, whole cell lysate

**Lane 3 :** THP-1 (human monocytic leukemia cell line) whole cell lysate

**Lane 4 :** THP-1 (human monocytic leukemia cell line) treated with 50 ng/mL PMA for 48 hours and 200 ng/mL LPS for 24 hours, whole cell lysate

**Lane 5 :** U937 (human histiocytic lymphoma cell line) whole cell lysate

**Lane 6 :** Raji (human Burkitt's lymphoma cell line) whole cell lysate

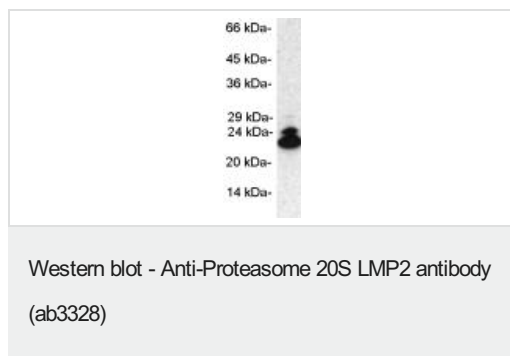
**Lane 7** : Ramos (human Burkitt's lymphoma cell line) whole cell lysate

Lysates/proteins at 30 µg per lane.

### Secondary

**All lanes** : Goat anti-Rabbit IgG (H+L) HRP conjugate at 0.4 µg/ml

Developed using the ECL technique.



Western blot of proteasome 20S LMP2 in 50 µg mouse embryo fibroblast cell extract using ab3328.

**Please note:** All products are "FOR RESEARCH USE ONLY. NOT FOR USE IN DIAGNOSTIC PROCEDURES"

### Our Abpromise to you: Quality guaranteed and expert technical support

---

- Replacement or refund for products not performing as stated on the datasheet
- Valid for 12 months from date of delivery
- Response to your inquiry within 24 hours
- We provide support in Chinese, English, French, German, Japanese and Spanish
- Extensive multi-media technical resources to help you
- We investigate all quality concerns to ensure our products perform to the highest standards

If the product does not perform as described on this datasheet, we will offer a refund or replacement. For full details of the Abpromise, please visit <https://www.abcam.cn/abpromise> or contact our technical team.

### Terms and conditions

---

- Guarantee only valid for products bought direct from Abcam or one of our authorized distributors