


# Anti-Proteasome 20S C2/HC2 antibody [EPR5451] ab109500

重组 RabMAb

## 1 References 3 图像

### 概述

产品名称	Anti-Proteasome 20S C2/HC2抗体[EPR5451]
描述	兔单克隆抗体[EPR5451] to Proteasome 20S C2/HC2
宿主	Rabbit
经测试应用	<b>适用于:</b> WB, IHC-P <b>不适用于:</b> Flow Cyt
种属反应性	<b>与反应:</b> Human <b>预测可用于:</b> Mouse, Rat 
免疫原	Synthetic peptide. This information is proprietary to Abcam and/or its suppliers.
阳性对照	HeLa, Jurkat, HepG2, and PC-3 cell lysates Human breast tissue
常规说明	This product is a recombinant monoclonal antibody, which offers several advantages including: <ul style="list-style-type: none"><li>- High batch-to-batch consistency and reproducibility</li><li>- Improved sensitivity and specificity</li><li>- Long-term security of supply</li><li>- Animal-free production</li></ul> For more information <a href="#">see here</a> . Our RabMAb <sup>®</sup> technology is a patented hybridoma-based technology for making rabbit monoclonal antibodies. For details on our patents, please refer to <a href="#">RabMAb<sup>®</sup> patents</a> .

### 性能

形式	Liquid
存放说明	Shipped at 4°C. Upon delivery aliquot and store at -20°C. Avoid freeze / thaw cycles.
存储溶液	pH: 7.20 Preservative: 0.05% Sodium azide Constituents: 0.1% BSA, 40% Glycerol (glycerin, glycerine), 9.85% Tris glycine, 50% Tissue culture supernatant
纯度	Protein A purified
克隆	单克隆
克隆编号	EPR5451

同种型

IgG

## 应用

### The Abpromise guarantee

**Abpromise™** 承诺保证使用 ab109500 于以下的经测试应用

“应用说明”部分 下显示的仅为推荐的起始稀释度；实际最佳的稀释度/浓度应由使用者检定。

应用	Ab评论	说明
WB		1/1000 - 1/10000. Predicted molecular weight: 30 kDa.
IHC-P		1/250 - 1/500. Perform heat mediated antigen retrieval with citrate buffer pH 6 before commencing with IHC staining protocol. Perform antigen retrieval

### 应用说明

Is unsuitable for Flow Cyt.

## 靶标

### 功能

The proteasome is a multicatalytic proteinase complex which is characterized by its ability to cleave peptides with Arg, Phe, Tyr, Leu, and Glu adjacent to the leaving group at neutral or slightly basic pH. The proteasome has an ATP-dependent proteolytic activity. Mediates the lipopolysaccharide-induced signal transduction in the macrophage proteasome (By similarity). Might be involved in the anti-inflammatory response of macrophages during the interaction with C.albicans heat-inactivated cells.

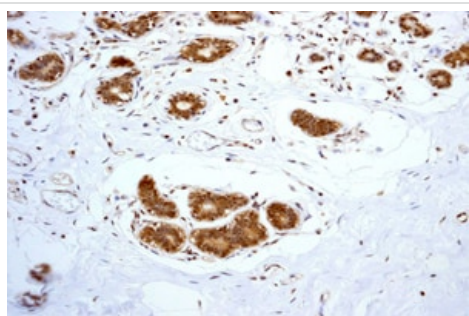
### 序列相似性

Belongs to the peptidase T1A family.

### 细胞定位

Cytoplasm. Nucleus.

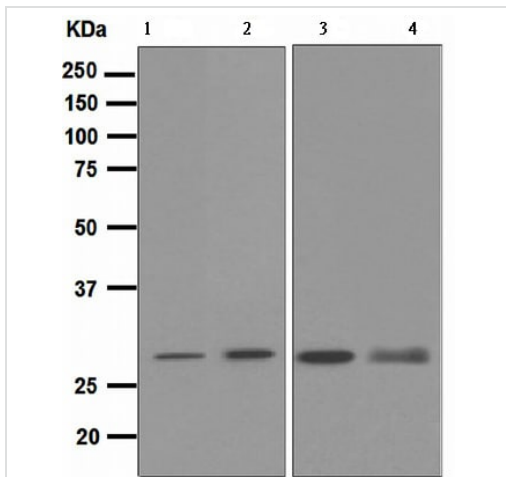
## 图片



Immunohistochemistry (Formalin/PFA-fixed paraffin-embedded sections) - Anti-Proteasome 20S C2/HC2 antibody [EPR5451] (ab109500)

Immunohistochemical analysis of paraffin-embedded Human breast tissue using ab109500 at 1/250 dilution.

Perform heat mediated antigen retrieval with citrate buffer pH 6 before commencing with IHC staining protocol.



Western blot - Anti-Proteasome 20S C2/HC2 antibody [EPR5451] (ab109500)

**All lanes :** Anti-Proteasome 20S C2/HC2 antibody [EPR5451] (ab109500) at 1/1000 dilution

**Lane 1 :** HeLa cell lysate

**Lane 2 :** Jurkat cell lysate

**Lane 3 :** HepG2 cell lysate

**Lane 4 :** PC-3 cell lysate





Lysates/proteins at 10 µg per lane.

**Secondary**

**All lanes :** Standard HRP labelled goat anti-rabbit at 1/2000 dilution

**Predicted band size:** 30 kDa

Why choose a recombinant antibody?

 <p><b>Research with confidence</b> Consistent and reproducible results</p>	 <p><b>Long-term and scalable supply</b> Recombinant technology</p>
 <p><b>Success from the first experiment</b> Confirmed specificity</p>	 <p><b>Ethical standards compliant</b> Animal-free production</p>

Anti-Proteasome 20S C2/HC2 antibody [EPR5451] (ab109500)

**Please note:** All products are "FOR RESEARCH USE ONLY. NOT FOR USE IN DIAGNOSTIC PROCEDURES"

**Our Abpromise to you: Quality guaranteed and expert technical support**

- Replacement or refund for products not performing as stated on the datasheet
- Valid for 12 months from date of delivery
- Response to your inquiry within 24 hours
- We provide support in Chinese, English, French, German, Japanese and Spanish

- Extensive multi-media technical resources to help you
- We investigate all quality concerns to ensure our products perform to the highest standards

If the product does not perform as described on this datasheet, we will offer a refund or replacement. For full details of the Abpromise, please visit <https://www.abcam.cn/abpromise> or contact our technical team.

### **Terms and conditions**

---

- Guarantee only valid for products bought direct from Abcam or one of our authorized distributors