


Anti-Proteasome 20S alpha 1+2+3+5+6+7 antibody [MCP231] ab22674

★★★★★ [8 Abreviews](#) [24 References](#) [2 图像](#)

概述

产品名称	Anti-Proteasome 20S alpha 1+2+3+5+6+7抗体[MCP231]
描述	小鼠单克隆抗体[MCP231] to Proteasome 20S alpha 1+2+3+5+6+7
宿主	Mouse
经测试应用	适用于: Flow Cyt, ICC/IF 不适用于: IP
种属反应性	与反应: Human 预测可用于: a wide range of other species 
免疫原	Full length protein corresponding to Proteasome 20S alpha 1+2+3+5+6+7. Dinitrophenylated proteasomes
表位	Reacts with the peptide sequence TVWSPQGRLHQVEYAMEA encompassing the prosbox I motif common to alpha type subunits, although not necessarily identical in all. In general this motif is phylogenetically preserved.
阳性对照	Human placental proteasome.
常规说明	<p>This product was changed from ascites to tissue culture supernatant on 22nd May 2019. Please note that the dilutions may need to be adjusted accordingly. If you have any questions, please do not hesitate to contact our scientific support team.</p> <p>Dilute antibody to working dilution in PBS, pH 7.2 - 7.4. Store at 4°C and use within 1 month. Store unopened vial at -20°C for long term storage. Avoid freeze/thaw cycles.</p> <p>This antibody reacts with six different alpha type subunits:- alpha 1, 2, 3, 5, 6 and 7.</p> <p>The Life Science industry has been in the grips of a reproducibility crisis for a number of years. Abcam is leading the way in addressing this with our range of recombinant monoclonal antibodies and knockout edited cell lines for gold-standard validation. Please check that this product meets your needs before purchasing.</p> <p>If you have any questions, special requirements or concerns, please send us an inquiry and/or contact our Support team ahead of purchase. Recommended alternatives for this product can be found below, along with publications, customer reviews and Q&As</p>

性能

形式	Liquid
存放说明	Shipped at 4°C. Upon delivery aliquot and store at -20°C. Avoid freeze / thaw cycles.
存储溶液	Preservative: 0.01% Sodium azide Constituent: 99% PBS
纯度	Protein G purified
Primary antibody说明	This antibody reacts with six different alpha type subunits:- alpha 1, 2, 3, 5, 6 and 7.
克隆	单克隆
克隆编号	MCP231
同种型	IgG1

应用

The Abpromise guarantee **Abpromise™**承诺保证使用ab22674于以下的经测试应用

“应用说明”部分 下显示的仅为推荐的起始稀释度;实际最佳的稀释度/浓度应由使用者检定。

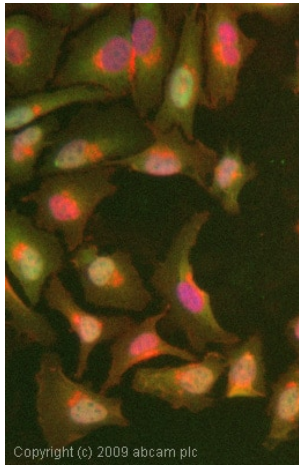
应用	Ab评论	说明
Flow Cyt		Use at an assay dependent concentration. ab170190 - Mouse monoclonal IgG1, is suitable for use as an isotype control with this antibody.
ICC/IF	★★★★★ (1)	Use at an assay dependent concentration.

应用说明 Is unsuitable for IP.

靶标

相关性	<p>The proteasome is widely recognised as the central enzyme of non lysosomal protein degradation. It is responsible for intracellular protein turnover and it is also critically involved in many regulatory processes and, in higher eukaryotes, in antigen processing. The 26S proteasome is the key enzyme of the ubiquitin/ATP dependent pathway of protein degradation. The catalytic core of this unusually large complex is formed by the 20S proteasome, a barrel shaped structure shown by electron microscopy to comprise of four rings each containing seven subunits. Based on sequence similarity, all fourteen 20S proteasomal subunit sequences may be classified into two groups, alpha and beta, each group having distinct structural and functional roles. The alpha subunits comprise the outer rings and the beta subunits the inner rings of the 20S proteasome. Observations of the eukaryotic proteasome and analysis of subunit sequences indicate that each ring contains seven different subunits (alpha7/beta7/beta7/alpha7) with a member of each sub family represented in each particle. Each subunit is located in a unique position within the alpha or beta rings. 20S Proteasomes degrade only unfolded proteins in an energy independent manner, whereas 26S proteasomes degrade native and ubiquitylated proteins in an ATP dependent manner. The native protein substrates are recognised by subunits, some with ATP binding sites, of the outer 19S caps of the 26S proteasome.</p>
细胞定位	Cytoplasmic and Nuclear

图片

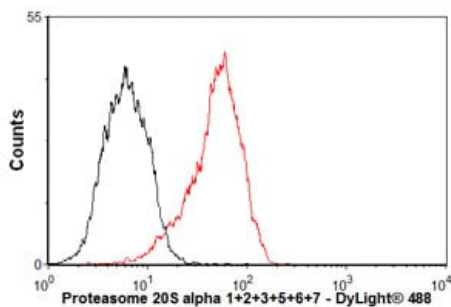


Copyright (c) 2009 abcam plc

Immunocytochemistry/ Immunofluorescence - Anti-Proteasome 20S alpha 1+2+3+5+6+7 antibody [MCP231] (ab22674)

ICC/IF image of ab22674 stained HeLa cells. The cells were 4% formaldehyde fixed (10 min) and then incubated in 1%BSA / 10% normal goat serum / 0.3M glycine in 0.1% PBS-Tween for 1h to permeabilise the cells and block non-specific protein-protein interactions. The cells were then incubated with the antibody (ab22674, 1µg/ml) overnight at +4°C. The secondary antibody (green) was Alexa Fluor® 488 goat anti-mouse IgG (H+L) used at a 1/1000 dilution for 1h. Alexa Fluor® 594 WGA was used to label plasma membranes (red) at a 1/200 dilution for 1h. DAPI was used to stain the cell nuclei (blue) at a concentration of 1.43µM.

This image was generated using the ascites version of the product.



Copyright (c) 2011 Abcam plc

Flow Cytometry - Anti-Proteasome 20S alpha 1+2+3+5+6+7 antibody [MCP231] (ab22674)

Overlay histogram showing HepG2 cells stained with ab22674 (red line). The cells were fixed with 80% methanol (5 min) and then permeabilized with 0.1% PBS-Tween for 20 min. The cells were then incubated in 1x PBS / 10% normal goat serum / 0.3M glycine to block non-specific protein-protein interactions followed by the antibody (ab22674, 2µg/1x10⁶ cells) for 30 min at 22°C. The secondary antibody used was DyLight® 488 goat anti-mouse IgG (H+L) (**ab96879**) at 1/500 dilution for 30 min at 22°C. Isotype control antibody (black line) was mouse IgG1 [ICIGG1] (**ab91353**, 2µg/1x10⁶ cells) used under the same conditions. Acquisition of >5,000 events was performed.

This image was generated using the ascites version of the product.

Please note: All products are "FOR RESEARCH USE ONLY. NOT FOR USE IN DIAGNOSTIC PROCEDURES"

Our Abpromise to you: Quality guaranteed and expert technical support

- Replacement or refund for products not performing as stated on the datasheet
- Valid for 12 months from date of delivery
- Response to your inquiry within 24 hours
- We provide support in Chinese, English, French, German, Japanese and Spanish
- Extensive multi-media technical resources to help you
- We investigate all quality concerns to ensure our products perform to the highest standards

If the product does not perform as described on this datasheet, we will offer a refund or replacement. For full details of the Abpromise, please visit <https://www.abcam.cn/abpromise> or contact our technical team.

Terms and conditions

- Guarantee only valid for products bought direct from Abcam or one of our authorized distributors