

Anti-Proteasome 20S alpha + beta antibody ab22673

★★★★★ [7 Abreviews](#) [36 References](#) [2 图像](#)

概述

| | |
|-------|--|
| 产品名称 | Anti-Proteasome 20S alpha + beta抗体 |
| 描述 | 兔多克隆抗体to Proteasome 20S alpha + beta |
| 宿主 | Rabbit |
| 经测试应用 | 适用于: IP, WB, IHC-Fr, ICC/IF |
| 种属反应性 | 与反应: Mouse, Rat, Human, Saccharomyces cerevisiae |
| 免疫原 | Tissue/ cell preparation: Proteasomal preparation isolated from human red blood cells. |
| 常规说明 | <p>Dilute to working concentration in PBS pH 7.2- 7.4, and store at 2 to 4°C (do not freeze). Use diluted antibody within 1 month.</p> <p>The Life Science industry has been in the grips of a reproducibility crisis for a number of years. Abcam is leading the way in addressing this with our range of recombinant monoclonal antibodies and knockout edited cell lines for gold-standard validation. Please check that this product meets your needs before purchasing.</p> <p>If you have any questions, special requirements or concerns, please send us an inquiry and/or contact our Support team ahead of purchase. Recommended alternatives for this product can be found below, along with publications, customer reviews and Q&As</p> |

性能

| | |
|------|---|
| 形式 | Liquid |
| 存放说明 | Shipped at 4°C. Upon delivery aliquot and store at -20°C. Avoid freeze / thaw cycles. |
| 存储溶液 | Preservative: 0.065% Sodium azide Constituent: PBS |
| 纯度 | Whole antiserum |
| 克隆 | 多克隆 |
| 同种型 | IgG |

应用

The Abpromise guarantee [Abpromise™](#) 承诺保证使用ab22673于以下的经测试应用

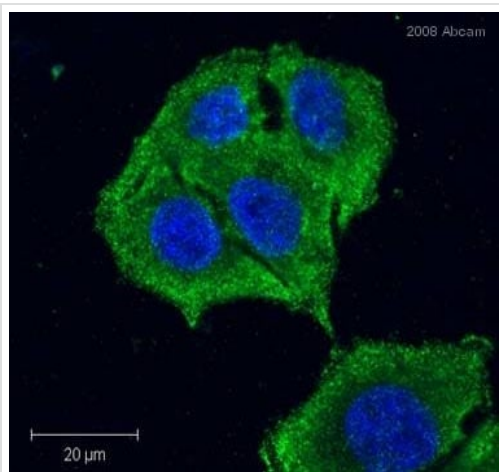
“应用说明”部分 下显示的仅为推荐的起始稀释度;实际最佳的稀释度/浓度应由使用者检定。

| 应用 | Ab评论 | 说明 |
|--------|-----------|---|
| IP | | Use at an assay dependent concentration. |
| WB | ★★★★★ (2) | 1/1000. |
| IHC-Fr | ★★★★☆ (1) | Use at an assay dependent concentration. |
| ICC/IF | ★★★★★ (4) | Use at an assay dependent concentration. See Abreview. PubMed: 23840376 |

靶标

| | |
|--------------------|--|
| <p>相关性</p> | <p>The proteasome is widely recognised as the central enzyme of non lysosomal protein degradation. It is responsible for intracellular protein turnover and it is also critically involved in many regulatory processes and, in higher eukaryotes, in antigen processing. The 26S proteasome is the key enzyme of the ubiquitin/ATP dependent pathway of protein degradation. The catalytic core of this unusually large (2000 kDa, 450Å in length) complex is formed by the 20S proteasome, a barrel shaped structure shown by electron microscopy to comprise of four rings each containing seven subunits. Based on sequence similarity, all fourteen 20S proteasomal subunit sequences may be classified into two groups, alpha and beta, each group having distinct structural and functional roles. The alpha subunits comprise the outer rings and the beta subunits the inner rings of the 20S proteasome. Observations of the eukaryotic proteasome and analysis of subunit sequences indicate that each ring contains seven different subunits (alpha7 beta7 beta7 alpha7) with a member of each sub family represented in each particle. Each subunit is located in a unique position within the alpha or beta rings. 20S Proteasomes degrade only unfolded proteins in an energy independent manner, whereas 26S proteasomes degrade native and ubiquitylated proteins in an ATP dependent manner. The native protein substrates are recognised by subunits, some with ATP binding sites, of the outer 19S caps of the 26S proteasome.</p> |
| <p>细胞定位</p> | <p>Cytoplasmic and Nuclear.</p> |

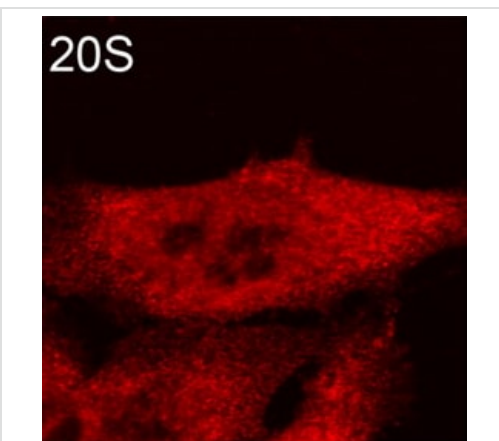
图片



Immunocytochemistry/ Immunofluorescence - Anti-Proteasome 20S alpha + beta antibody (ab22673)

This image is courtesy of an anonymous abreview.

ab22673 staining human HeLa cells by ICC/IF. Cells were formaldehyde fixed, permeabilized in 0.1% Triton and blocked in 3% BSA for 15 minutes at room temperature. The primary antibody was diluted 1/2000 (3% BSA) and incubated with sample for 1 hour. An Alexa Fluor® 488 conjugated goat polyclonal to rabbit, diluted 1/1000 was used as secondary.



Immunocytochemistry/ Immunofluorescence - Anti-Proteasome 20S alpha + beta antibody (ab22673)

Image from Anderson DD et al., J Biol Chem. 2012 Feb 10;287(7):4790-9. Epub 2011 Dec 21. Fig 5.; doi: 10.1074/jbc.M111.302174; February 10, 2012 The Journal of Biological Chemistry, 287, 4790-4799.

Immunofluorescence analysis of HeLa cells, staining Proteasome 20S alpha + beta with ab22673.

Cells were fixed with formaldehyde and permeabilized using 0.1% Triton X-100. Samples were incubated with primary antibody (1/1000) for 1 hour at room temperature. An AlexaFluor®555-conjugated donkey anti-rabbit IgG was used as the secondary antibody.

Please note: All products are "FOR RESEARCH USE ONLY. NOT FOR USE IN DIAGNOSTIC PROCEDURES"

Our Abpromise to you: Quality guaranteed and expert technical support

- Replacement or refund for products not performing as stated on the datasheet
- Valid for 12 months from date of delivery
- Response to your inquiry within 24 hours
- We provide support in Chinese, English, French, German, Japanese and Spanish
- Extensive multi-media technical resources to help you
- We investigate all quality concerns to ensure our products perform to the highest standards

If the product does not perform as described on this datasheet, we will offer a refund or replacement. For full details of the Abpromise, please visit <https://www.abcam.cn/abpromise> or contact our technical team.

Terms and conditions

- Guarantee only valid for products bought direct from Abcam or one of our authorized distributors