

Anti-pro Caspase-12 antibody ab8118

[5 References](#) [2 图像](#)

概述

产品名称	Anti-pro Caspase-12抗体
描述	兔多克隆抗体to pro Caspase-12
宿主	Rabbit
特异性	The antibody only recognizes the prodomain, not the activated form.
经测试应用	适用于: IHC-P, WB
种属反应性	与反应: Mouse, Human
免疫原	Synthetic peptide within Mouse pro Caspase-12 aa 1-100 (N terminal). The exact immunogen sequence used to generate this antibody is proprietary information. If additional detail on the immunogen is needed to determine the suitability of the antibody for your needs, please contact our Scientific Support team to discuss your requirements. Database link: O08736

 [Run BLAST with](#)

 [Run BLAST with](#)

常规说明

The Life Science industry has been in the grips of a reproducibility crisis for a number of years. Abcam is leading the way in addressing this with our range of recombinant monoclonal antibodies and knockout edited cell lines for gold-standard validation. Please check that this product meets your needs before purchasing.

If you have any questions, special requirements or concerns, please send us an inquiry and/or contact our Support team ahead of purchase. Recommended alternatives for this product can be found below, along with publications, customer reviews and Q&As

性能

形式	Liquid
存放说明	Shipped at 4°C. Upon delivery aliquot and store at -20°C or -80°C. Avoid repeated freeze / thaw cycles.
存储溶液	pH: 7.2 Preservative: 0.02% Sodium azide
纯度	Affinity purified
克隆	多克隆
同种型	IgG

应用

The Abpromise guarantee **Abpromise™**承诺保证使用ab8118于以下的经测试应用

“应用说明”部分 下显示的仅为推荐的起始稀释度;实际最佳的稀释度/浓度应由使用者检定。

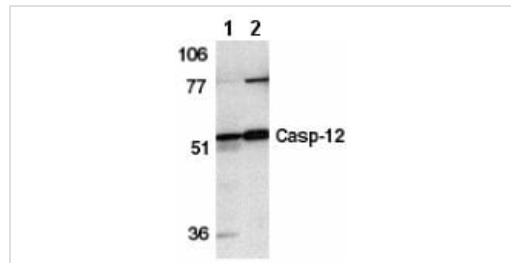
应用	Ab评论	说明
IHC-P		Use a concentration of 10 µg/ml.
WB		Use a concentration of 0.5 - 1 µg/ml. Detects a band of approximately 55 kDa.

靶标

相关性 Caspase 12 is activated by ER stress, including disruption of ER calcium homeostasis and mediates ER stress-induced apoptosis. Caspase 12 is co-localized to the ER with several proteins that are involved in Alzheimers disease including gamma-secretase presenilin and beta-amyloid precursor protein (APP). Caspase 12 mediates cytotoxicity induced by amyloid-beta. It is ubiquitously expressed in mouse tissue.

细胞定位 Endoplasmic reticulum

图片

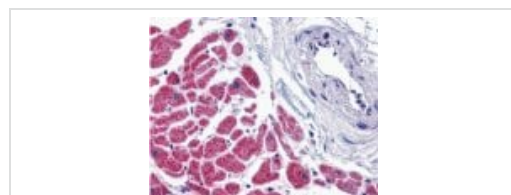


Western blot - Anti-pro Caspase-12 antibody (ab8118)

All lanes : Anti-pro Caspase-12 antibody (ab8118) at 1 µg/ml

Lane 1 : Human spleen tissue lysate

Lane 2 : Mouse spleen tissue lysate



Immunohistochemistry (Formalin/PFA-fixed paraffin-embedded sections) - Anti-pro Caspase-12 antibody (ab8118)

ab8118 at 10µg/ml staining Caspase-12 in human heart tissue by IHC

Please note: All products are "FOR RESEARCH USE ONLY. NOT FOR USE IN DIAGNOSTIC PROCEDURES"

Our Abpromise to you: Quality guaranteed and expert technical support

- Replacement or refund for products not performing as stated on the datasheet
- Valid for 12 months from date of delivery
- Response to your inquiry within 24 hours

- We provide support in Chinese, English, French, German, Japanese and Spanish
- Extensive multi-media technical resources to help you
- We investigate all quality concerns to ensure our products perform to the highest standards

If the product does not perform as described on this datasheet, we will offer a refund or replacement. For full details of the Abpromise, please visit <https://www.abcam.cn/abpromise> or contact our technical team.

Terms and conditions

- Guarantee only valid for products bought direct from Abcam or one of our authorized distributors