

Anti-PPP1CB antibody [EP1804Y] ab53315

重组 RabMAb

★★★★★ **2 Abreviews** **29 References** **13 图像**

概述

产品名称	Anti-PPP1CB抗体[EP1804Y]
描述	兔单克隆抗体[EP1804Y] to PPP1CB
宿主	Rabbit
经测试应用	适用于: Flow Cyt (Intra), WB, IP, IHC-P, ICC/IF
种属反应性	与反应: Mouse, Rat, Human
免疫原	Synthetic peptide. This information is proprietary to Abcam and/or its suppliers.
阳性对照	WB: Jurkat, Mouse brain, and Rat brain lysates. IHC-P: Human cervical carcinoma, Rat kidney tissue, Mouse kidney tissue, Mouse cardiac muscle and Rat colon tissue. IP: Human fetal brain lysate. ICC/IF: HeLa and MCF-7 cells. Flow Cyt (Intra): HeLa cells.
常规说明	<p>Our RabMAb[®] technology is a patented hybridoma-based technology for making rabbit monoclonal antibodies. For details on our patents, please refer to <u>RabMAb[®] patents</u>.</p> <p>The Life Science industry has been in the grips of a reproducibility crisis for a number of years. Abcam is leading the way in addressing this with our range of recombinant monoclonal antibodies and knockout edited cell lines for gold-standard validation. Please check that this product meets your needs before purchasing.</p> <p>If you have any questions, special requirements or concerns, please send us an inquiry and/or contact our Support team ahead of purchase. Recommended alternatives for this product can be found below, along with publications, customer reviews and Q&As</p>

性能

形式	Liquid
存放说明	Shipped at 4°C. Store at +4°C short term (1-2 weeks). Upon delivery aliquot. Store at -20°C. Avoid freeze / thaw cycle. Stable for 12 months at -20°C.
存储溶液	<p>pH: 7.20</p> <p>Preservative: 0.01% Sodium azide</p> <p>Constituents: 59% PBS, 40% Glycerol (glycerin, glycerine), 0.05% BSA</p>
纯度	Protein A purified
克隆	单克隆

克隆编号

EP1804Y

同种型

IgG

应用

The Abpromise guarantee

Abpromise™承诺保证使用ab53315于以下的经测试应用

“应用说明”部分 下显示的仅为推荐的起始稀释度;实际最佳的稀释度/浓度应由使用者检定。

应用	Ab评论	说明
Flow Cyt (Intra)		1/20 - 1/50. ab172730 - Rabbit monoclonal IgG, is suitable for use as an isotype control with this antibody.
WB	★★★★★ (2)	1/50000. Detects a band of approximately 37 kDa (predicted molecular weight: 37 kDa). For unpurified use at 1/10000 - 1/20000.
IP		1/100.
IHC-P		1/400. Perform heat mediated antigen retrieval with Tris/EDTA buffer pH 9.0 before commencing with IHC staining protocol. For unpurified use at 1/250. See IHC antigen retrieval protocols .
ICC/IF		1/250.

靶标

功能

Protein phosphatase that associates with over 200 regulatory proteins to form highly specific holoenzymes which dephosphorylate hundreds of biological targets. Protein phosphatase (PP1) is essential for cell division, it participates in the regulation of glycogen metabolism, muscle contractility and protein synthesis. Involved in regulation of ionic conductances and long-term synaptic plasticity. Component of the PTW/PP1 phosphatase complex, which plays a role in the control of chromatin structure and cell cycle progression during the transition from mitosis into interphase. In balance with CSNK1D and CSNK1E, determines the circadian period length, through the regulation of the speed and rhythmicity of PER1 and PER2 phosphorylation. May dephosphorylate CSNK1D and CSNK1E. Dephosphorylates the 'Ser-418' residue of FOXP3 in regulatory T-cells (Treg) from patients with rheumatoid arthritis, thereby inactivating FOXP3 and rendering Treg cells functionally defective (PubMed:23396208).

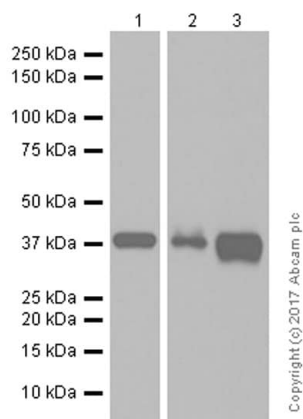
序列相似性

Belongs to the PPP phosphatase family. PP-1 subfamily.

细胞定位

Cytoplasm. Nucleus. Nucleus, nucleoplasm. Nucleus, nucleolus. Highly mobile in cells and can be relocalized through interaction with targeting subunits. In the presence of PPP1R8 relocalizes from the nucleus to nuclear speckles.

图片



Western blot - Anti-PPP1CB antibody [EP1804Y] (ab53315)

All lanes : Anti-PPP1CB antibody [EP1804Y] (ab53315) at 1/50000 dilution (purified)

Lane 1 : Jurkat (Human T cell leukemia T lymphocyte) whole cell lysates

Lane 2 : Mouse brain lysates

Lane 3 : Rat brain lysates

Lysates/proteins at 20 µg per lane.

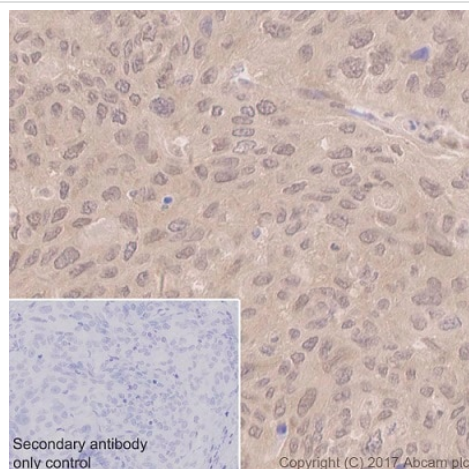
Secondary

All lanes : Goat Anti-Rabbit IgG H&L (HRP) ([ab97051](#)) at 1/20000 dilution

Predicted band size: 37 kDa

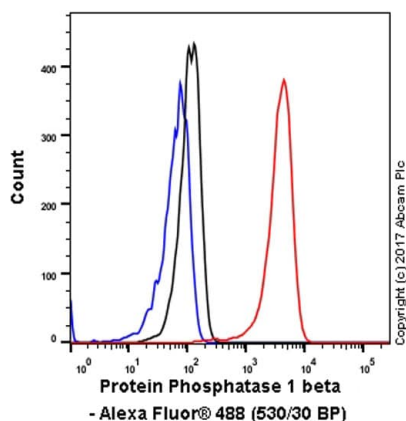
Observed band size: 38 kDa

Blocking and diluting buffer: 5% NFDM/TBST



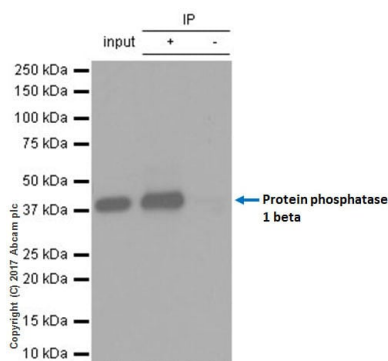
Immunohistochemistry (Formalin/PFA-fixed paraffin-embedded sections) - Anti-PPP1CB antibody [EP1804Y] (ab53315)

Immunohistochemistry (Formalin/PFA-fixed paraffin-embedded sections) analysis of Human cervical carcinoma tissue sections labeling PPP1CB with purified ab53315 at 1/400 dilution (1 µg/ml). Heat mediated antigen retrieval was performed using EDTA Buffer, pH 9.0. Tissue was counterstained with Hematoxylin. ImmunoHistoProbe one step HRP Polymer (ready to use) secondary antibody was used. PBS instead of the primary antibody was used as the negative control.



Flow Cytometry (Intracellular) - Anti-PPP1CB antibody [EP1804Y] (ab53315)

Intracellular Flow Cytometry analysis of HeLa (Human cervix adenocarcinoma epithelial cell) cells labeling Protein phosphatase 1 beta with purified ab53315 at 1/40 dilution (10 ug/ml) (red). Cells were fixed with 4% Paraformaldehyde. A Goat anti rabbit IgG (Alexa Fluor® 488) secondary antibody was used at 1/2000 dilution. Isotype control - 90% methanol. Unlabeled control - Rabbit monoclonal IgG (Black). Cell without incubation with primary antibody and secondary antibody (Blue).



Immunoprecipitation - Anti-PPP1CB antibody [EP1804Y] (ab53315)

ab53315 (purified) at 1/100 dilution (2ug) immunoprecipitating Protein phosphatase 1 beta in Human fetal brain lysate.

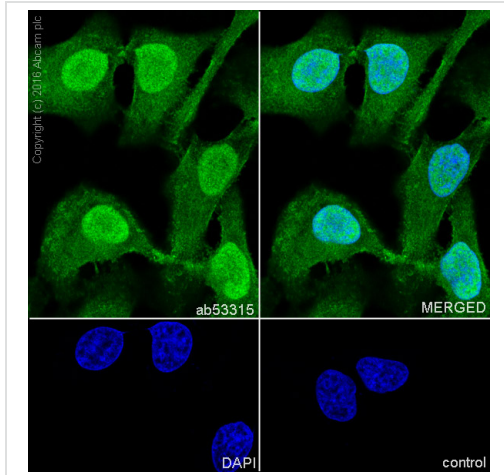
Lane 1 (input): Human fetal brain lysate 10ug

Lane 2 (+): ab53315 & Human fetal brain lysate

Lane 3 (-): Rabbit monoclonal IgG (**ab172730**) instead of ab53315 in Human fetal brain lysate

For western blotting, VeriBlot for IP Detection Reagent (HRP) (**ab131366**) was used for detection at 1/1000 dilution.

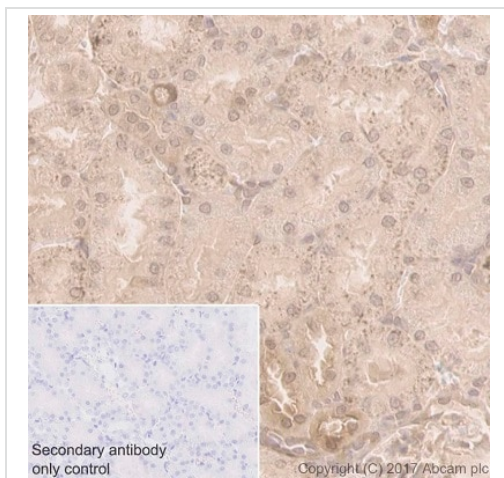
Blocking and diluting buffer: 5% NFDM/TBST.



Immunocytochemistry/ Immunofluorescence - Anti-PPP1CB antibody [EP1804Y] (ab53315)

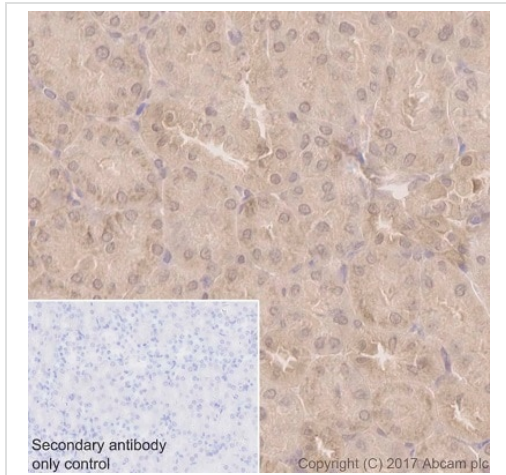
Unpurified ab53315 staining PPP1CB antibody in HeLa (human cervix adenocarcinoma) cells by ICC (Immunocytochemistry). Cells were fixed with 4% Paraformaldehyde and permeabilized with 0.1% Triton X-100. Samples were incubated with primary antibody at a dilution of 1/500. A goat anti rabbit IgG (Alexa Fluor® 488) ([ab150077](#)) was used as the secondary antibody at 1/1000 dilution.

DAPI was used as a nuclear counterstain and the negative control was PBS only.



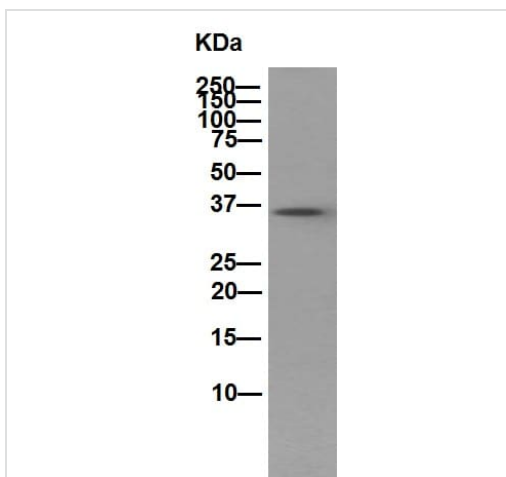
Immunohistochemistry (Formalin/PFA-fixed paraffin-embedded sections) - Anti-PPP1CB antibody [EP1804Y] (ab53315)

Immunohistochemistry (Formalin/PFA-fixed paraffin-embedded sections) analysis of Rat kidney tissue sections labeling PPP1CB with purified ab53315 at 1/400 dilution (1 µg/ml). Heat mediated antigen retrieval was performed using EDTA Buffer, pH 9.0. Tissue was counterstained with Hematoxylin. ImmunoHistoProbe one step HRP Polymer (ready to use) secondary antibody was used. PBS instead of the primary antibody was used as the negative control.



Immunohistochemistry (Formalin/PFA-fixed paraffin-embedded sections) - Anti-PPP1CB antibody [EP1804Y] (ab53315)

Immunohistochemistry (Formalin/PFA-fixed paraffin-embedded sections) analysis of Mouse kidney tissue sections labeling PPP1CB with purified ab53315 at 1/400 dilution (1 µg/ml). Heat mediated antigen retrieval was performed using EDTA Buffer, pH 9.0. Tissue was counterstained with Hematoxylin. ImmunoHistoProbe one step HRP Polymer (ready to use) secondary antibody was used. PBS instead of the primary antibody was used as the negative control.



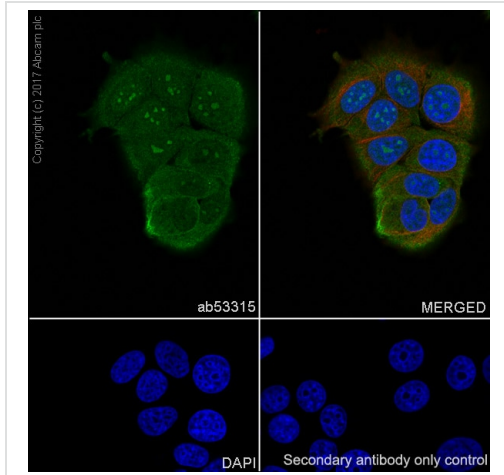
Western blot - Anti-PPP1CB antibody [EP1804Y] (ab53315)

Anti-PPP1CB antibody [EP1804Y] (ab53315) at 1/20000 dilution (unpurified) + Jurkat cells at 20 µg

Secondary

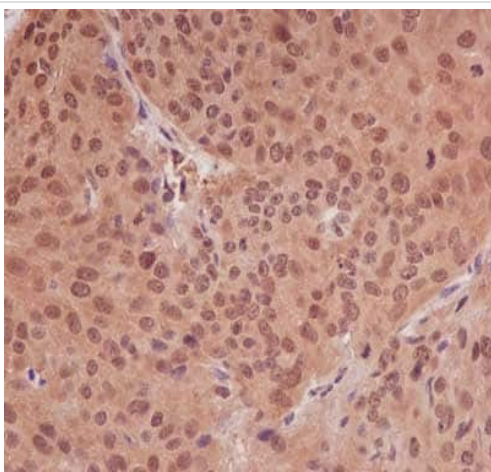
Goat Anti-Rabbit IgG H&L (HRP) ([ab97051](#)) at 1/1000 dilution

Predicted band size: 37 kDa



Immunocytochemistry/ Immunofluorescence - Anti-PPP1CB antibody [EP1804Y] (ab53315)

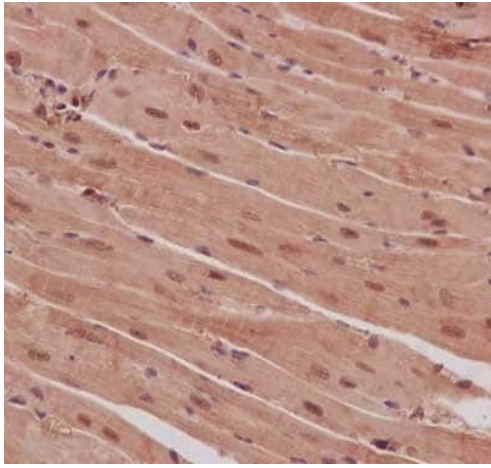
Immunocytochemistry analysis of MCF-7 (Human breast adenocarcinoma epithelial cell) cells labeling PPP1CB with Purified ab53315 at 1:250 dilution (1.6 µg/ml). Cells were fixed in 4% Paraformaldehyde and permeabilized with 0.1% tritonX-100. Cells were counterstained with Ab195889 Anti-alpha Tubulin antibody [DM1A] - Microtubule Marker (Alexa Fluor® 594) 1/200 (2.5 µg/ml). **ab150077** Goat anti rabbit IgG(Alexa Fluor® 488) was used as the secondary antibody at 1/1000 dilution. DAPI nuclear counterstain. PBS instead of the primary antibody was used as the secondary antibody only control.



Immunohistochemistry (Formalin/PFA-fixed paraffin-embedded sections) - Anti-PPP1CB antibody [EP1804Y] (ab53315)

Immunohistochemical analysis of paraffin-embedded sections of Human cervical carcinoma labelling PPP1CB with unpurified ab53315 at 1/250 dilution. Prediluted ImmunoHistoprobe (ready to use) HRP Polymer for Rabbit IgG was used as a secondary antibody.

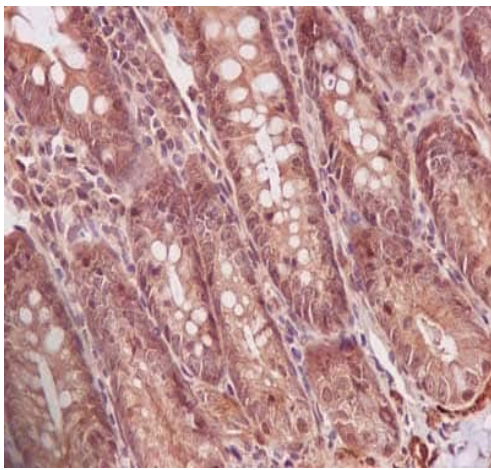
Counter stain = Hematoxylin. Heat mediated antigen retrieval using EDTA buffer at pH 9 was performed.



Immunohistochemistry (Formalin/PFA-fixed paraffin-embedded sections) - Anti-PPP1CB antibody [EP1804Y] (ab53315)

Immunohistochemical analysis of paraffin-embedded sections of mouse cardiac muscle labelling PPP1CB with unpurified ab53315 at 1/250 dilution. Prediluted ImmunoHistoprobe (ready to use) HRP Polymer for Rabbit IgG was used as a secondary antibody.

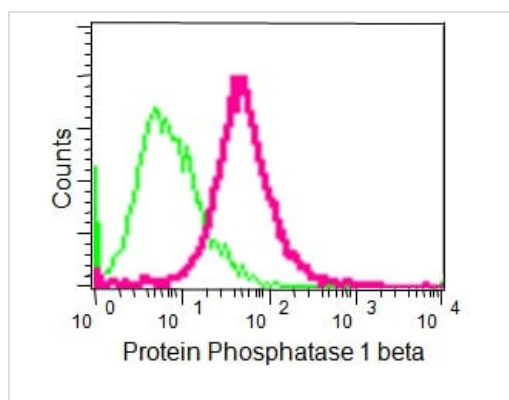
Counter stain = Hematoxylin. Heat mediated antigen retrieval using EDTA buffer at pH 9 was performed.



Immunohistochemistry (Formalin/PFA-fixed paraffin-embedded sections) - Anti-PPP1CB antibody [EP1804Y] (ab53315)

Immunohistochemical analysis of paraffin-embedded sections of rat colon labelling PPP1CB with unpurified ab53315 at 1/250 dilution. Prediluted ImmunoHistoprobe (ready to use) HRP Polymer for Rabbit IgG was used as a secondary antibody.

Counter stain = Hematoxylin. Heat mediated antigen retrieval using EDTA buffer at pH 9 was performed.



Flow Cytometry (Intracellular) - Anti-PPP1CB
antibody [EP1804Y] (ab53315)

Flow Cytometry (Intracellular) analysis of HeLa cells labelling PPP1CB with unpurified ab53315 at 1/20 dilution. Goat anti rabbit IgG (H&L) (FITC) at 1/150 dilution was used as the secondary antibody. Isotype control = Rabbit monoclonal IgG. Fixative = 2% paraformaldehyde.

Please note: All products are "FOR RESEARCH USE ONLY. NOT FOR USE IN DIAGNOSTIC PROCEDURES"

Our Abpromise to you: Quality guaranteed and expert technical support

- Replacement or refund for products not performing as stated on the datasheet
- Valid for 12 months from date of delivery
- Response to your inquiry within 24 hours
- We provide support in Chinese, English, French, German, Japanese and Spanish
- Extensive multi-media technical resources to help you
- We investigate all quality concerns to ensure our products perform to the highest standards

If the product does not perform as described on this datasheet, we will offer a refund or replacement. For full details of the Abpromise, please visit <https://www.abcam.cn/abpromise> or contact our technical team.

Terms and conditions

- Guarantee only valid for products bought direct from Abcam or one of our authorized distributors