


# Anti-PPP1A/PPP1CA (phospho T320) antibody [EP1512Y] ab62334

RabMAb

[20 References](#) [2 图像](#)

### 概述

产品名称	Anti-PPP1A/PPP1CA (phospho T320)抗体[EP1512Y]
描述	兔单克隆抗体[EP1512Y] to PPP1A/PPP1CA (phospho T320)
宿主	Rabbit
特异性	This antibody detects PP1 alpha phosphorylated at Threonine 320.
经测试应用	<b>适用于:</b> WB, IHC-P <b>不适用于:</b> Flow Cyt or ICC/IF
种属反应性	<b>与反应:</b> Human <b>预测可用于:</b> Mouse, Rat, Xenopus laevis 
免疫原	Synthetic peptide. This information is proprietary to Abcam and/or its suppliers.
阳性对照	WB: HeLa cell lysate. IHC-P: Human muscle tissue.
常规说明	<p>Our RabMAb<sup>®</sup> technology is a patented hybridoma-based technology for making rabbit monoclonal antibodies. For details on our patents, please refer to <a href="#">RabMAb<sup>®</sup> patents</a>.</p> <p>The Life Science industry has been in the grips of a reproducibility crisis for a number of years. Abcam is leading the way in addressing this with our range of recombinant monoclonal antibodies and knockout edited cell lines for gold-standard validation. Please check that this product meets your needs before purchasing.</p> <p>If you have any questions, special requirements or concerns, please send us an inquiry and/or contact our Support team ahead of purchase. Recommended alternatives for this product can be found below, along with publications, customer reviews and Q&amp;As</p>

### 性能

形式	Liquid
存放说明	Shipped at 4°C. Upon delivery aliquot and store at -20°C. Avoid freeze / thaw cycles.
存储溶液	pH: 7.20 Preservative: 0.05% Sodium azide Constituents: 0.1% BSA, 40% Glycerol (glycerin, glycerine), 9.85% Tris glycine, 50% Tissue culture supernatant

纯度	Protein A purified
克隆	单克隆
克隆编号	EP1512Y
同种型	IgG

## 应用

**The Abpromise guarantee** **Abpromise™**承诺保证使用ab62334于以下的经测试应用

“应用说明”部分下显示的仅为推荐的起始稀释度;实际最佳的稀释度/浓度应由使用者检定。

应用	Ab评论	说明
WB		1/1000 - 1/10000. Detects a band of approximately 38 kDa (predicted molecular weight: 38 kDa).
IHC-P		1/100 - 1/250. Perform heat mediated antigen retrieval with Tris/EDTA buffer pH 9.0 before commencing with IHC staining protocol.

**应用说明** Is unsuitable for Flow Cyt or ICC/IF.

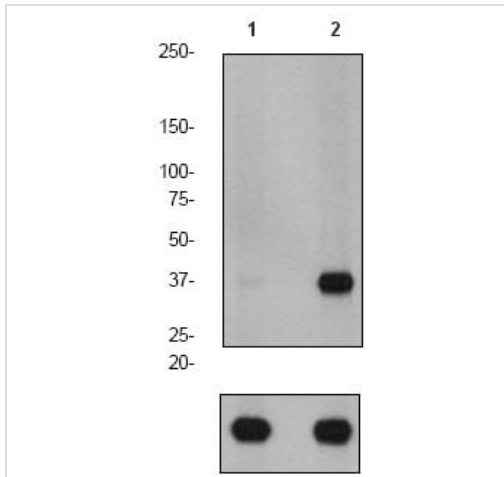
## 靶标

**功能** Protein phosphatase 1 (PP1) is essential for cell division, and participates in the regulation of glycogen metabolism, muscle contractility and protein synthesis. Involved in regulation of ionic conductances and long-term synaptic plasticity. May play an important role in dephosphorylating substrates such as the postsynaptic density-associated Ca(2+)/calmodulin dependent protein kinase II. Component of the PTW/PP1 phosphatase complex, which plays a role in the control of chromatin structure and cell cycle progression during the transition from mitosis into interphase.

**序列相似性** Belongs to the PPP phosphatase family. PP-1 subfamily.

**细胞定位** Cytoplasm. Nucleus. Nucleus > nucleoplasm. Nucleus > nucleolus. Primarily nuclear and largely excluded from the nucleolus. Highly mobile in cells and can be relocalized through interaction with targeting subunits. NOM1 plays a role in targeting this protein to the nucleolus. In the presence of PPP1R8 relocalizes from the nucleus to nuclear speckles.

## 图片



Western blot - Anti-PPP1A/PPP1CA (phospho T320) antibody [EP1512Y] (ab62334)

**All lanes :** Anti-PPP1A/PPP1CA (phospho T320) antibody [EP1512Y] (ab62334)

**Lane 1 :** HeLa cell lysate (untreated)

**Lane 2 :** HeLa cell lysate (treated with Calyculin A)

Lysates/proteins at 10 µg per lane.

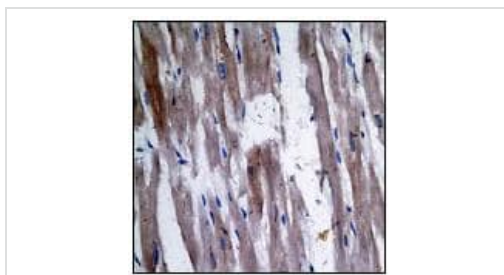
**Secondary**

**All lanes :** Goat anti-rabbit HRP conjugate at 1/2000 dilution

**Predicted band size:** 38 kDa

**Observed band size:** 38 kDa

The bottom image shows beta Tubulin as a positive control.



Immunohistochemistry (Formalin/PFA-fixed paraffin-embedded sections) - Anti-PPP1A/PPP1CA (phospho T320) antibody [EP1512Y] (ab62334)

ab62334 (1/100 - 1/250 dilution) staining human PPP1A/PPP1CA in human muscle tissue by immunohistochemistry using paraffin embedded tissue.

Perform heat mediated antigen retrieval with EDTA buffer pH 9 before commencing with IHC staining protocol.

**Please note:** All products are "FOR RESEARCH USE ONLY. NOT FOR USE IN DIAGNOSTIC PROCEDURES"

**Our Abpromise to you: Quality guaranteed and expert technical support**

- Replacement or refund for products not performing as stated on the datasheet
- Valid for 12 months from date of delivery

- Response to your inquiry within 24 hours
- We provide support in Chinese, English, French, German, Japanese and Spanish
- Extensive multi-media technical resources to help you
- We investigate all quality concerns to ensure our products perform to the highest standards

If the product does not perform as described on this datasheet, we will offer a refund or replacement. For full details of the Abpromise, please visit <https://www.abcam.cn/abpromise> or contact our technical team.

### **Terms and conditions**

---

- Guarantee only valid for products bought direct from Abcam or one of our authorized distributors