


Anti-PPM1G antibody [EPR13362-31] ab186423

重组 RabMAb

7 图像

概述

产品名称	Anti-PPM1G抗体[EPR13362-31]
描述	兔单克隆抗体[EPR13362-31] to PPM1G
宿主	Rabbit
经测试应用	适用于: Flow Cyt (Intra), WB, IHC-P, ICC/IF
种属反应性	与反应: Mouse, Human 预测可用于: Rat 
免疫原	Recombinant fragment. This information is proprietary to Abcam and/or its suppliers.
阳性对照	293T, Jurkat, HeLa and MCF7 cell lysates; Human kidney clear cell carcinoma and Mouse cardiac muscle tissues; HeLa, 293T and 293 cells.
常规说明	<p>This product is a recombinant monoclonal antibody, which offers several advantages including:</p> <ul style="list-style-type: none">- High batch-to-batch consistency and reproducibility- Improved sensitivity and specificity- Long-term security of supply- Animal-free production <p>For more information see here.</p> <p>Our RabMAb[®] technology is a patented hybridoma-based technology for making rabbit monoclonal antibodies. For details on our patents, please refer to RabMAb[®] patents.</p>

性能

形式	Liquid
存放说明	Shipped at 4°C. Store at +4°C short term (1-2 weeks). Upon delivery aliquot. Store at -20°C long term. Avoid freeze / thaw cycle.
存储溶液	pH: 7.2 Preservative: 0.01% Sodium azide Constituents: 59% PBS, 40% Glycerol (glycerin, glycerine), 0.05% BSA
纯度	Protein A purified
克隆	单克隆
克隆编号	EPR13362-31

应用

The Abpromise guarantee

Abpromise™ 承诺保证使用 ab186423 于以下的经测试应用

“应用说明”部分 下显示的仅为推荐的起始稀释度；实际最佳的稀释度/浓度应由使用者检定。

应用	Ab评论	说明
Flow Cyt (Intra)		1/200. ab172730 - Rabbit monoclonal IgG, is suitable for use as an isotype control with this antibody.
WB		1/1000 - 1/10000. Detects a band of approximately 75 kDa (predicted molecular weight: 59 kDa).
IHC-P		1/250 - 1/500. Perform heat mediated antigen retrieval with Tris/EDTA buffer pH 9.0 before commencing with IHC staining protocol.
ICC/IF		1/100.

靶标

组织特异性

Widely expressed. Most abundant in testis, skeletal muscle, and heart.

序列相似性

Belongs to the PP2C family.

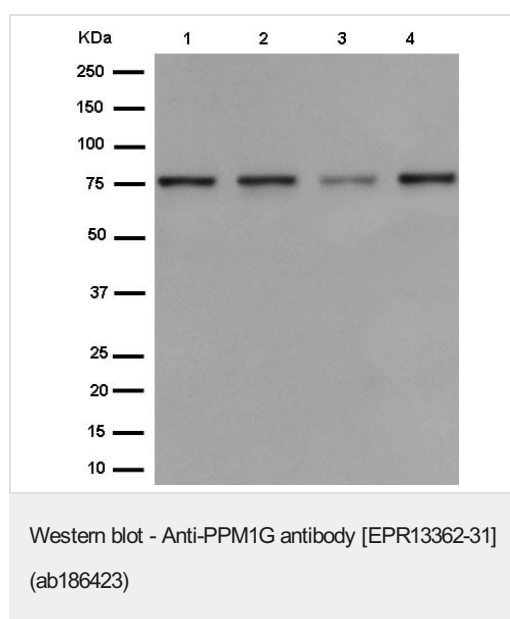
翻译后修饰

Phosphorylated upon DNA damage, probably by ATM or ATR.

细胞定位

Cytoplasm.

图片



All lanes : Anti-PPM1G antibody [EPR13362-31] (ab186423) at 1/10000 dilution

Lane 1 : 293T cell lysate

Lane 2 : Jurkat cell lysate

Lane 3 : HeLa cell lysate

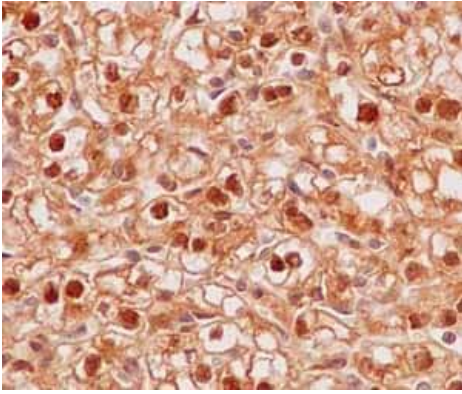
Lane 4 : MCF7 cell lysate

Lysates/proteins at 20 µg per lane.

Secondary

All lanes : Goat Anti-Rabbit IgG, (H+L), Peroxidase conjugate at 1/1000 dilution

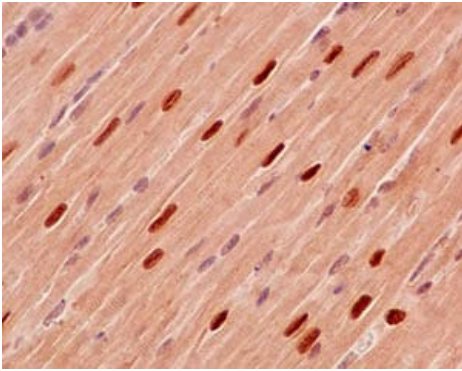
Predicted band size: 59 kDa



Immunohistochemistry (Formalin/PFA-fixed paraffin-embedded sections) - Anti-PPM1G antibody [EPR13362-31] (ab186423)

Immunohistochemical analysis of paraffin-embedded Human kidney clear cell carcinoma tissue labeling PPM1G with ab186423 at 1/500 dilution followed by prediluted HRP Polymer for Rabbit IgG. Counter stained with Hematoxylin.

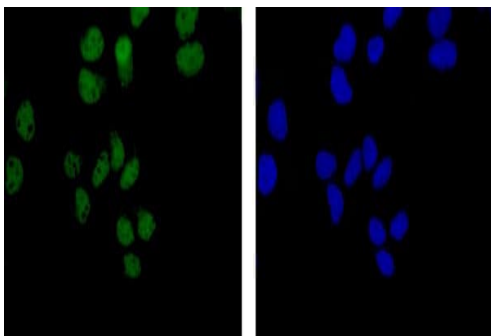
Perform heat mediated antigen retrieval with EDTA buffer pH 9 before commencing with IHC staining protocol.



Immunohistochemistry (Formalin/PFA-fixed paraffin-embedded sections) - Anti-PPM1G antibody [EPR13362-31] (ab186423)

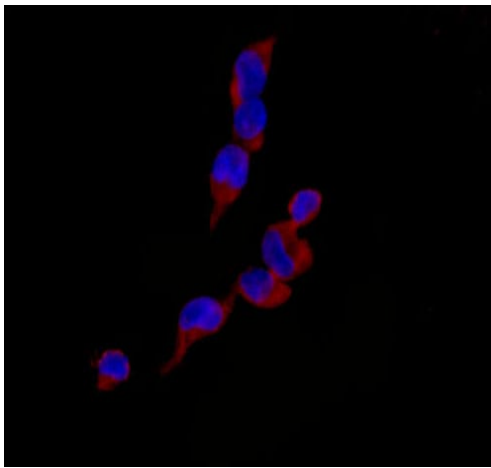
Immunohistochemical analysis of paraffin-embedded Mouse cardiac muscle tissue labeling PPM1G with ab186423 at 1/500 dilution followed by prediluted HRP Polymer for Rabbit IgG. Counter stained with Hematoxylin.

Perform heat mediated antigen retrieval with EDTA buffer pH 9 before commencing with IHC staining protocol.



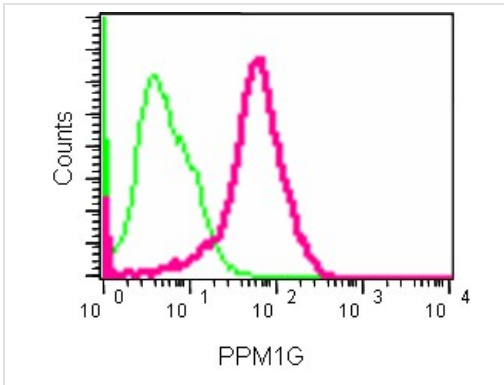
Immunocytochemistry/ Immunofluorescence - Anti-PPM1G antibody [EPR13362-31] (ab186423)

Immunofluorescent analysis of 4% paraformaldehyde-fixed HeLa cells labeling PPM1G with ab186423 at 1/500 dilution followed by Goat anti rabbit IgG (Alexa Fluor® 488) secondary antibody at 1/200 dilution (Green). Counter stained with Dapi (Blue).



Immunocytochemistry/ Immunofluorescence - Anti-PPM1G antibody [EPR13362-31] (ab186423)





Immunofluorescent analysis of 4% paraformaldehyde-fixed 293T cells labeling PPM1G with ab186423 at 1/100 dilution followed by Goat anti rabbit IgG (Alexa Fluor® 555) secondary antibody at 1/200 dilution. Counter stained with Dapi.



Flow Cytometry (Intracellular) - Anti-PPM1G antibody [EPR13362-31] (ab186423)

Intracellular flow cytometric analysis of 2% paraformaldehyde-fixed 293 cells labeling PPM1G with ab186423 at 1/200 dilution (red) compared to a Rabbit monoclonal IgG isotype control (green), followed by Goat anti rabbit IgG (FITC) secondary antibody at 1/150 dilution.

Why choose a recombinant antibody?

 Research with confidence Consistent and reproducible results	 Long-term and scalable supply Recombinant technology
 Success from the first experiment Confirmed specificity	 Ethical standards compliant Animal-free production

Anti-PPM1G antibody [EPR13362-31] (ab186423)

Please note: All products are "FOR RESEARCH USE ONLY. NOT FOR USE IN DIAGNOSTIC PROCEDURES"

Our Abpromise to you: Quality guaranteed and expert technical support

- Replacement or refund for products not performing as stated on the datasheet
- Valid for 12 months from date of delivery
- Response to your inquiry within 24 hours

- We provide support in Chinese, English, French, German, Japanese and Spanish
- Extensive multi-media technical resources to help you
- We investigate all quality concerns to ensure our products perform to the highest standards

If the product does not perform as described on this datasheet, we will offer a refund or replacement. For full details of the Abpromise, please visit <https://www.abcam.cn/abpromise> or contact our technical team.

Terms and conditions

- Guarantee only valid for products bought direct from Abcam or one of our authorized distributors