

Anti-PP2A-alpha antibody ab137825

[4 References](#) [4 图像](#)

概述

产品名称	Anti-PP2A-alpha抗体
描述	兔多克隆抗体to PP2A-alpha
宿主	Rabbit
经测试应用	适用于: ICC/IF, IHC-P, WB
种属反应性	与反应: Mouse, Human 预测可用于: Rat, Rabbit, Chicken, Cow, Dog, Pig, Xenopus laevis, Zebrafish, Xenopus tropicalis 
免疫原	Recombinant fragment aa 1-231. Database link: P67775
阳性对照	HeLa, HepG2, Molt 4 or Mouse brain whole lysates Cal27 xenograft Methanol fixed Hela cells
常规说明	<p>The Life Science industry has been in the grips of a reproducibility crisis for a number of years. Abcam is leading the way in addressing this with our range of recombinant monoclonal antibodies and knockout edited cell lines for gold-standard validation. Please check that this product meets your needs before purchasing.</p> <p>If you have any questions, special requirements or concerns, please send us an inquiry and/or contact our Support team ahead of purchase. Recommended alternatives for this product can be found below, along with publications, customer reviews and Q&As</p>

性能

形式	Liquid
存放说明	Shipped at 4°C. Upon delivery aliquot. Store at -20°C or -80°C. Avoid freeze / thaw cycle.
存储溶液	pH: 7.00 Preservative: 0.025% Proclin 300 Constituents: 78% PBS, 1% BSA, 20% Glycerol (glycerin, glycerine)
纯度	Immunogen affinity purified
克隆	多克隆
同种型	IgG

应用

The Abpromise guarantee **Abpromise™**承诺保证使用ab137825于以下的经测试应用

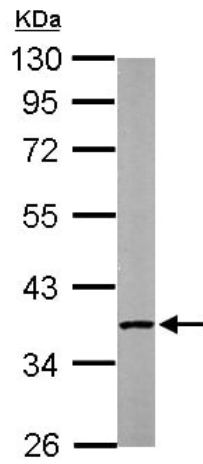
“应用说明”部分 下显示的仅为推荐的起始稀释度;实际最佳的稀释度/浓度应由使用者检定。

应用	Ab评论	说明
ICC/IF		1/100 - 1/1000.
IHC-P		1/100 - 1/1000. Perform heat mediated antigen retrieval before commencing with IHC staining protocol. Suggested antigen retrieval using heat mediated 10mM citrate buffer (pH6.0) or Tris-EDTA buffer (pH8.0).
WB		1/500 - 1/3000. Predicted molecular weight: 36 kDa.

靶标

功能	PP2A can modulate the activity of phosphorylase B kinase casein kinase 2, mitogen-stimulated S6 kinase, and MAP-2 kinase. Cooperates with SGOL2 to protect centromeric cohesin from separase-mediated cleavage in oocytes specifically during meiosis I (By similarity). Can dephosphorylate SV40 large T antigen and p53/TP53. Dephosphorylates SV40 large T antigen, preferentially on serine residues 120, 123, 677, and perhaps 679. The C subunit was most active, followed by the AC form, which was more active than the ABC form, and activity of all three forms was strongly stimulated by manganese, and to a lesser extent by magnesium. Dephosphorylation by the AC form, but not C or ABC form is inhibited by small T antigen.
序列相似性	Belongs to the PPP phosphatase family. PP-1 subfamily.
翻译后修饰	Reversibly methyl esterified on Leu-309. Carboxyl methylation may play a role in holoenzyme assembly. It varies during the cell cycle. Phosphorylation of either threonine (by autophosphorylation-activated protein kinase) or tyrosine results in inactivation of the phosphatase. Auto-dephosphorylation has been suggested as a mechanism for reactivation.
细胞定位	Cytoplasm. Nucleus. Chromosome > centromere. Cytoplasm > cytoskeleton > spindle pole. In prometaphase cells, but not in anaphase cells, localizes at centromeres. During mitosis, also found at spindle poles. Centromeric localization requires the presence of SGOL2.

图片

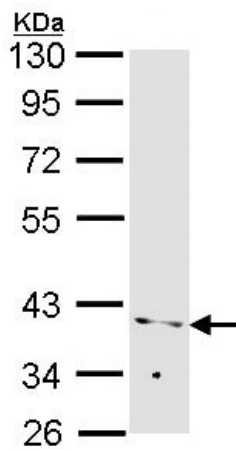


Western blot - Anti-PP2A-alpha antibody (ab137825)

Anti-PP2A-alpha antibody (ab137825) at 1/1000 dilution + Mouse brain whole cell lysate at 50 μ g

Predicted band size: 36 kDa

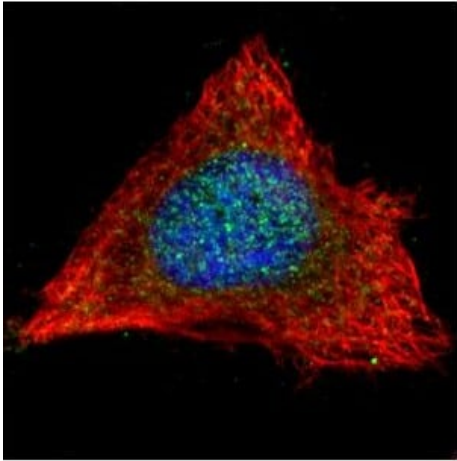
10% SDS PAGE



Western blot - Anti-PP2A-alpha antibody (ab137825)

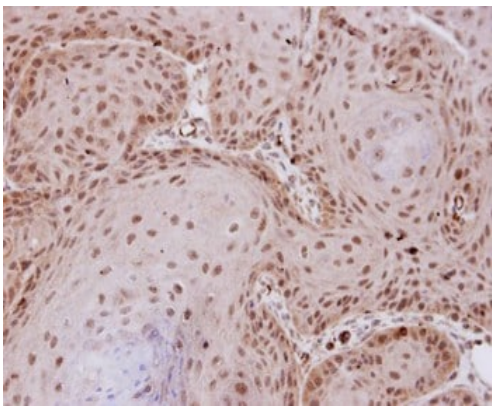
Anti-PP2A-alpha antibody (ab137825) at 1/1000 dilution + MOLT4 whole cell lysate at 30 μ g

Predicted band size: 36 kDa



Immunocytochemistry/ Immunofluorescence - Anti-PP2A-alpha antibody (ab137825)

Confocal immunofluorescence analysis of methanol fixed HeLa cells, labelling PP2A alpha with ab137825 (Green) at 1/500 dilution. Alpha tubulin filaments were labelled with an alpha tubulin antibody (Red) at 1/2000.



Immunohistochemistry (Formalin/PFA-fixed paraffin-embedded sections) - Anti-PP2A-alpha antibody (ab137825)

Immunohistochemical analysis of paraffin embedded Cal27 xenograft, labelling PP2A alpha with ab137825 at 1/100 dilution.

Please note: All products are "FOR RESEARCH USE ONLY. NOT FOR USE IN DIAGNOSTIC PROCEDURES"

Our Abpromise to you: Quality guaranteed and expert technical support

- Replacement or refund for products not performing as stated on the datasheet
- Valid for 12 months from date of delivery

- Response to your inquiry within 24 hours
- We provide support in Chinese, English, French, German, Japanese and Spanish
- Extensive multi-media technical resources to help you
- We investigate all quality concerns to ensure our products perform to the highest standards

If the product does not perform as described on this datasheet, we will offer a refund or replacement. For full details of the Abpromise, please visit <https://www.abcam.cn/abpromise> or contact our technical team.

Terms and conditions

- Guarantee only valid for products bought direct from Abcam or one of our authorized distributors