


Anti-PP2A alpha + beta antibody ab137849

★★★★★ [1 Abreviews](#) [2 References](#) [4 图像](#)

概述

产品名称	Anti-PP2A alpha + beta抗体
描述	兔多克隆抗体to PP2A alpha + beta
宿主	Rabbit
特异性	ab137849 does cross react with PP2A beta
经测试应用	适用于: WB, ICC/IF, IHC-P
种属反应性	与反应: Mouse, Human 预测可用于: Rat, Rabbit, Chicken, Cow, Dog, Pig, Xenopus laevis, Zebrafish, Xenopus tropicalis 
免疫原	Synthetic peptide corresponding to Human PP2A-alpha aa 247-259.
阳性对照	293T, A431, H1299, HeLaS3, Molt4, Raji and mouse brain lysates; HeLa cell; A549 xenograft
常规说明	<p>The Life Science industry has been in the grips of a reproducibility crisis for a number of years. Abcam is leading the way in addressing this with our range of recombinant monoclonal antibodies and knockout edited cell lines for gold-standard validation. Please check that this product meets your needs before purchasing.</p> <p>If you have any questions, special requirements or concerns, please send us an inquiry and/or contact our Support team ahead of purchase. Recommended alternatives for this product can be found below, along with publications, customer reviews and Q&As</p>

性能

形式	Liquid
存放说明	Shipped at 4°C. Upon delivery aliquot. Store at -20°C or -80°C. Avoid freeze / thaw cycle.
存储溶液	pH: 7.00 Preservative: 0.01% Thimerosal (merthiolate) Constituents: 89.99% PBS, 10% Glycerol (glycerin, glycerine)
纯度	Immunogen affinity purified
克隆	多克隆
同种型	IgG

The Abpromise guarantee

Abpromise™承诺保证使用ab137849于以下的经测试应用

“应用说明”部分 下显示的仅为推荐的起始稀释度;实际最佳的稀释度/浓度应由使用者检定。

应用	Ab评论	说明
WB		1/1000 - 1/10000. Predicted molecular weight: 35 kDa.
ICC/IF	★★★★★ (1)	1/100 - 1/1000.
IHC-P		1/100 - 1/1000. Perform heat mediated antigen retrieval with citrate buffer pH 6 before commencing with IHC staining protocol. Alternatively Tris-EDTA buffer (pH8.0) may be used.

靶标

功能

PP2A can modulate the activity of phosphorylase B kinase casein kinase 2, mitogen-stimulated S6 kinase, and MAP-2 kinase. Cooperates with SGOL2 to protect centromeric cohesin from separase-mediated cleavage in oocytes specifically during meiosis I (By similarity). Can dephosphorylate SV40 large T antigen and p53/TP53. Dephosphorylates SV40 large T antigen, preferentially on serine residues 120, 123, 677, and perhaps 679. The C subunit was most active, followed by the AC form, which was more active than the ABC form, and activity of all three forms was strongly stimulated by manganese, and to a lesser extent by magnesium. Dephosphorylation by the AC form, but not C or ABC form is inhibited by small T antigen. Activates RAF1 by dephosphorylating it at 'Ser-259'.

序列相似性

Belongs to the PPP phosphatase family. PP-1 subfamily.

翻译后修饰

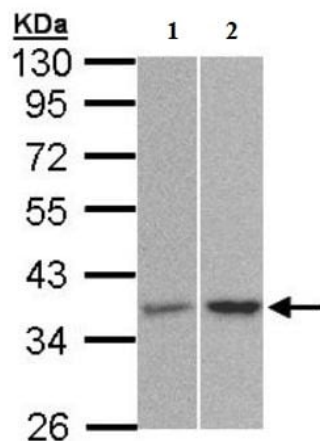
Reversibly methyl esterified on Leu-309. Carboxyl methylation may play a role in holoenzyme assembly, enhancing the affinity of the PP2A core enzyme for some, but not all, regulatory subunits. It varies during the cell cycle.

Phosphorylation of either threonine (by autophosphorylation-activated protein kinase) or tyrosine results in inactivation of the phosphatase. Auto-dephosphorylation has been suggested as a mechanism for reactivation.

细胞定位

Cytoplasm. Nucleus. Chromosome > centromere. Cytoplasm > cytoskeleton > spindle pole. In prometaphase cells, but not in anaphase cells, localizes at centromeres. During mitosis, also found at spindle poles. Centromeric localization requires the presence of SGOL2.

图片



Western blot - Anti-PP2A alpha + beta antibody (ab137849)

All lanes : Anti-PP2A alpha + beta antibody (ab137849) at 1/1500 dilution

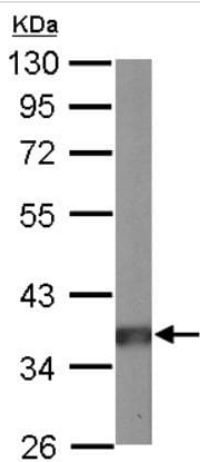
Lane 1 : 293T whole cell lysate

Lane 2 : Molt4 whole cell lysate

Lysates/proteins at 30 µg per lane.

Predicted band size: 35 kDa

10% SDS PAGE

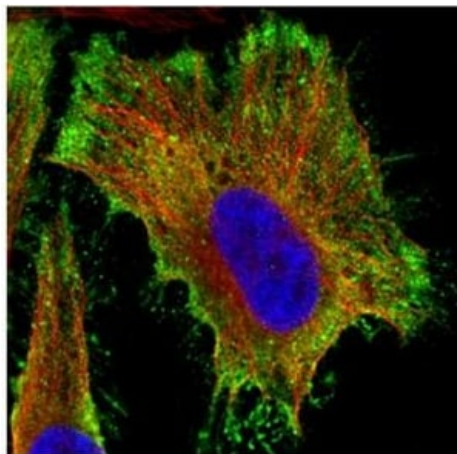


Western blot - Anti-PP2A alpha + beta antibody (ab137849)

Anti-PP2A alpha + beta antibody (ab137849) at 1/10000 dilution + mouse brain whole cell lysate at 50 µg

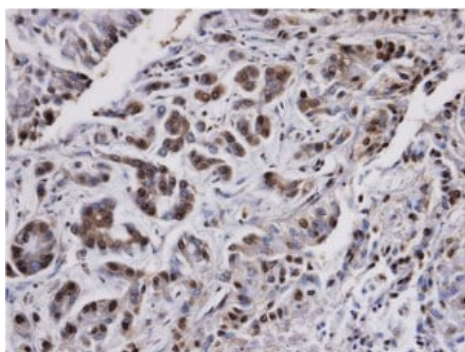
Predicted band size: 35 kDa

10% SDS PAGE



Immunocytochemistry/ Immunofluorescence - Anti-PP2A alpha + beta antibody (ab137849)

Confocal immunofluorescence analysis of paraformaldehyde fixed HeLa cell labeling PP2A alpha with ab137849 (green) at a 1/500 dilution. Alpha tubulin filaments were labeled with an Alpha tubulin antibody (red) at a 1/2000 dilution.



Immunohistochemistry (Formalin/PFA-fixed paraffin-embedded sections) - Anti-PP2A alpha + beta antibody (ab137849)

Immunohistochemical analysis of paraffin embedded A549 xenograft, labeling PP2A alpha using ab137849 at a 1/100 dilution.

Please note: All products are "FOR RESEARCH USE ONLY. NOT FOR USE IN DIAGNOSTIC PROCEDURES"

Our Abpromise to you: Quality guaranteed and expert technical support

- Replacement or refund for products not performing as stated on the datasheet
- Valid for 12 months from date of delivery
- Response to your inquiry within 24 hours
- We provide support in Chinese, English, French, German, Japanese and Spanish
- Extensive multi-media technical resources to help you

- We investigate all quality concerns to ensure our products perform to the highest standards

If the product does not perform as described on this datasheet, we will offer a refund or replacement. For full details of the Abpromise, please visit <https://www.abcam.cn/abpromise> or contact our technical team.

Terms and conditions

- Guarantee only valid for products bought direct from Abcam or one of our authorized distributors