

### Anti-POMC antibody [EPR17571] ab210605

**重组** RabMAb

**8 References**   **14 图像**

#### 概述

产品名称	Anti-POMC抗体[EPR17571]
描述	兔单克隆抗体[EPR17571] to POMC
宿主	Rabbit
经测试应用	<b>适用于:</b> IP, IHC-P, WB
种属反应性	<b>与反应:</b> Mouse, Rat, Human, Recombinant fragment
免疫原	Synthetic peptide. This information is proprietary to Abcam and/or its suppliers.
阳性对照	WB: HEK-293T transfected with POMC whole cell lysate; rat and mouse pituitary lysates; human ACTH recombinant protein. IHC-P: Human, mouse and rat pituitary tissues. IP: Rat pituitary whole cell lysate.
常规说明	<p>This product is a recombinant monoclonal antibody, which offers several advantages including:</p> <ul style="list-style-type: none"> <li>- High batch-to-batch consistency and reproducibility</li> <li>- Improved sensitivity and specificity</li> <li>- Long-term security of supply</li> <li>- Animal-free production</li> </ul> <p>For more information <a href="#">see here</a>.</p> <p>Our RabMAb<sup>®</sup> technology is a patented hybridoma-based technology for making rabbit monoclonal antibodies. For details on our patents, please refer to <a href="#">RabMAb<sup>®</sup> patents</a>.</p>

#### 性能

形式	Liquid
存放说明	Shipped at 4°C. Store at +4°C short term (1-2 weeks). Upon delivery aliquot. Store at -20°C long term. Avoid freeze / thaw cycle.
存储溶液	<p>pH: 7.2</p> <p>Preservative: 0.01% Sodium azide</p> <p>Constituents: 59% PBS, 40% Glycerol (glycerin, glycerine), 0.05% BSA</p>
纯度	Protein A purified
克隆	单克隆
克隆编号	EPR17571

同种型

IgG

应用

The Abpromise guarantee

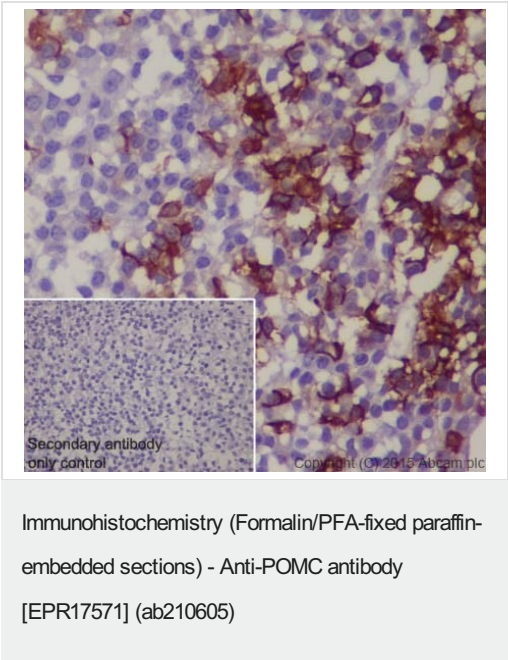
Abpromise™承诺保证使用ab210605于以下的经测试应用

“应用说明”部分 下显示的仅为推荐的起始稀释度;实际最佳的稀释度/浓度应由使用者检定。

应用	Ab评论	说明
IP		1/80.
IHC-P		1/16000. Perform heat mediated antigen retrieval with Tris/EDTA buffer pH 9.0 before commencing with IHC staining protocol.
WB		1/5000. Detects a band of approximately 29 kDa (predicted molecular weight: 29 kDa).

靶标

图片



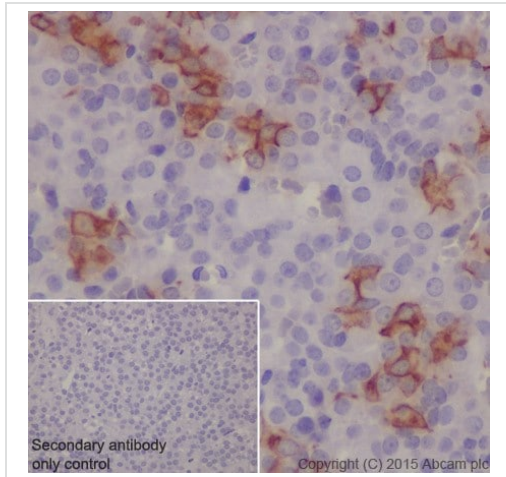
Immunohistochemical analysis of paraffin-embedded mouse pituitary tissue labeling POMC with ab210605 at 1/16000 dilution, followed by Goat Anti-Rabbit IgG H&L (HRP) ([ab97051](#)) at 1/500 dilution.

Cytoplasmic staining on mouse pituitary is observed.

Counter stained with Hematoxylin.

Secondary antibody only control: Used PBS instead of primary antibody, secondary antibody is Goat Anti-Rabbit IgG H&L (HRP) ([ab97051](#)) at 1/500 dilution.

Perform heat mediated antigen retrieval with Tris/EDTA buffer pH 9.0 before commencing with IHC staining protocol.



Immunohistochemistry (Formalin/PFA-fixed paraffin-embedded sections) - Anti-POMC antibody [EPR17571] (ab210605)

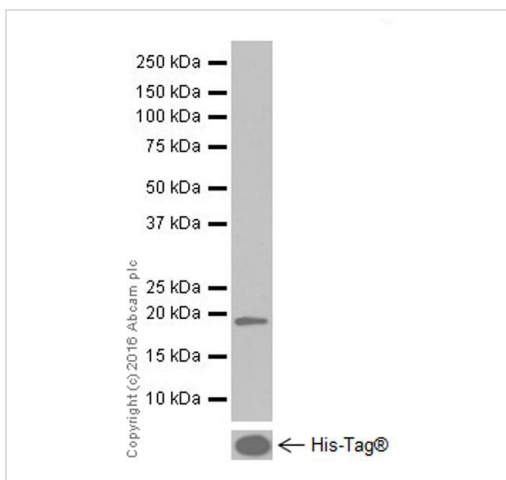
Immunohistochemical analysis of paraffin-embedded rat pituitary tissue labeling POMC with ab210605 at 1/16000 dilution, followed by Goat Anti-Rabbit IgG H&L (HRP) ([ab97051](#)) at 1/500 dilution.

Cytoplasmic staining on rat pituitary is observed.

Counter stained with Hematoxylin.

Secondary antibody only control: Used PBS instead of primary antibody, secondary antibody is Goat Anti-Rabbit IgG H&L (HRP) ([ab97051](#)) at 1/500 dilution.

Perform heat mediated antigen retrieval with Tris/EDTA buffer pH 9.0 before commencing with IHC staining protocol.



Western blot - Anti-POMC antibody [EPR17571] (ab210605)

Anti-POMC antibody [EPR17571] (ab210605) at 1/1000 dilution + human ACTH recombinant protein at 0.01 µg

### Secondary

Goat Anti-Rabbit IgG H&L (HRP) ([ab97051](#)) at 1/100000 dilution

**Predicted band size:** 29 kDa

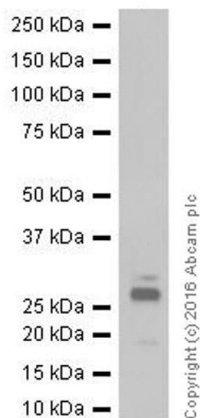
**Observed band size:** 18 kDa

**Exposure time:** 3 minutes

Blocking/Dilution buffer: 5% NFDM/TBST.

Human ACTH recombinant peptide contains 3\*aa138-176 with His-tag.

This product is capable of recognizing the ACTH peptide.



Western blot - Anti-POMC antibody [EPR17571]  
(ab210605)

Anti-POMC antibody [EPR17571] (ab210605) at 1/5000 dilution +  
mouse pituitary lysate at 10 µg

#### Secondary

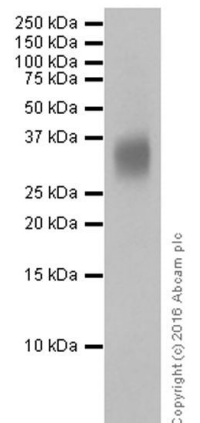
Goat Anti-Rabbit IgG H&L (HRP) ([ab97051](#)) at 1/100000 dilution

**Predicted band size:** 29 kDa

**Observed band size:** 29 kDa

**Exposure time:** 3 minutes

Blocking/Dilution buffer: 5% NFDM/TBST.



Western blot - Anti-POMC antibody [EPR17571]  
(ab210605)

Anti-POMC antibody [EPR17571] (ab210605) at 1/1000 dilution +  
rat pituitary lysate at 10 µg

#### Secondary

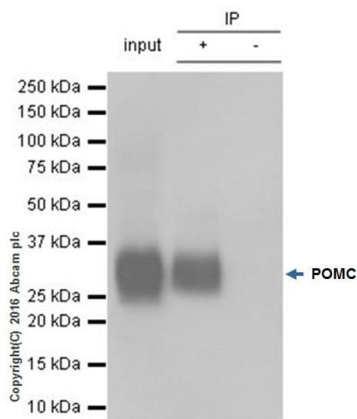
Goat Anti-Rabbit IgG H&L (HRP) ([ab97051](#)) at 1/100000 dilution

**Predicted band size:** 29 kDa

**Observed band size:** 29 kDa

**Exposure time:** 1 second

Blocking/Dilution buffer: 5% NFDM/TBST.



Immunoprecipitation - Anti-POMC antibody  
[EPR17571] (ab210605)

ab210605 at 1/80 immunoprecipitating POMC in Rat pituitary whole cell lysate observed at 29 KDa (lanes 1 and 2).

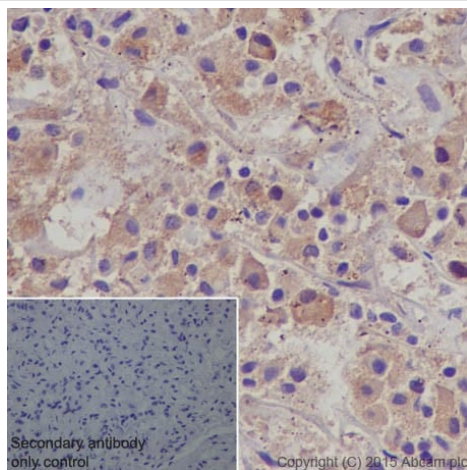
**Lane 1 (input):** Rat pituitary whole cell lysate 10µg

**Lane 2 (+):** ab210605 + Rat pituitary whole cell lysate

**Lane 3 (-):** Rabbit monoclonal IgG (**ab172730**) instead of ab210605 in Rat pituitary whole cell lysate

For western blotting, ab210605 at 1/1000 dilution and VeriBlot for IP Detection Reagent (HRP) (**ab131366**), was used for detection at 1/10,000 dilution.

Blocking/Diluting buffer and concentration: 5% NFDM/TBST.



Immunohistochemistry (Formalin/PFA-fixed paraffin-embedded sections) - Anti-POMC antibody  
[EPR17571] (ab210605)

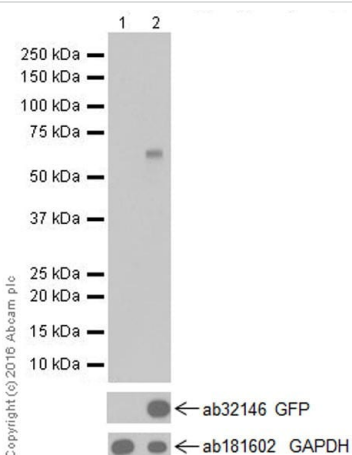
Immunohistochemical analysis of paraffin-embedded human pituitary tissue labeling POMC with ab210605 at 1/16000 dilution, followed by Goat Anti-Rabbit IgG H&L (HRP) (**ab97051**) at 1/500 dilution.

Cytoplasmic staining on human pituitary is observed.

Counter stained with Hematoxylin.

Secondary antibody only control: Used PBS instead of primary antibody, secondary antibody is Goat Anti-Rabbit IgG H&L (HRP) (**ab97051**) at 1/500 dilution.

Perform heat mediated antigen retrieval with Tris/EDTA buffer pH 9.0 before commencing with IHC staining protocol.



Western blot - Anti-POMC antibody [EPR17571]  
(ab210605)

**All lanes :** Anti-POMC antibody [EPR17571] (ab210605) at 1/10000 dilution

**Lane 1 :** Untransfected HEK-293T (Human epithelial cell line from embryonic kidney) whole cell lysate

**Lane 2 :** HEK-293T (Human epithelial cell line from embryonic kidney) transfected with POMC whole cell lysate

Lysates/proteins at 10 µg per lane.

### Secondary

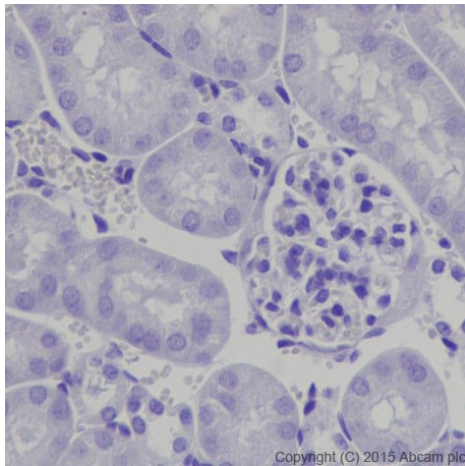
**All lanes :** Goat Anti-Rabbit IgG H&L (HRP) (**ab97051**) at 1/100000 dilution

**Predicted band size:** 29 kDa

**Observed band size:** 55 kDa

**Exposure time:** 3 seconds

Blocking/Dilution buffer: 5% NFDm/TBST.



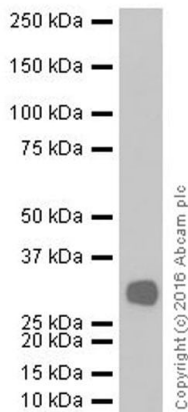
Immunohistochemistry (Formalin/PFA-fixed paraffin-embedded sections) - Anti-POMC antibody [EPR17571] (ab210605)

Immunohistochemical analysis of paraffin-embedded mouse kidney tissue labeling POMC with ab210605 at 1/16000 dilution, followed by Goat Anti-Rabbit IgG H&L (HRP) ([ab97051](#)) at 1/500 dilution.

Negative staining on mouse kidney.

Counter stained with Hematoxylin.

Perform heat mediated antigen retrieval with Tris/EDTA buffer pH 9.0 before commencing with IHC staining protocol.



Western blot - Anti-POMC antibody [EPR17571] (ab210605)

Anti-POMC antibody [EPR17571] (ab210605) at 1/5000 dilution + rat pituitary lysate at 10 µg

### Secondary

Goat Anti-Rabbit IgG H&L (HRP) ([ab97051](#)) at 1/100000 dilution

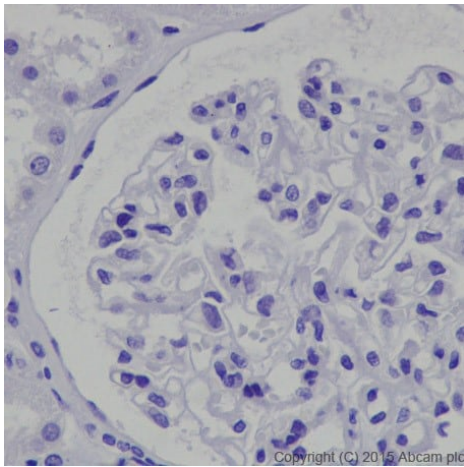
**Predicted band size:** 29 kDa

**Observed band size:** 29 kDa

**Exposure time:** 3 minutes

Blocking/Dilution buffer: 5% NFDm/TBST.





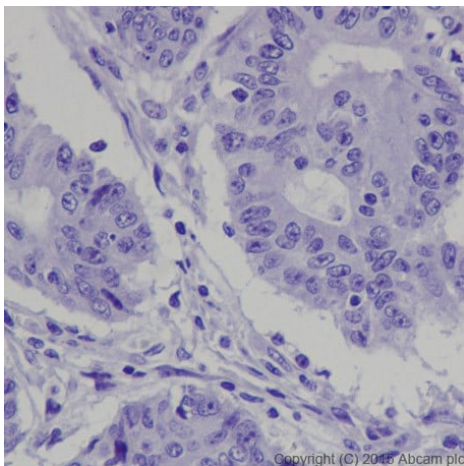
Immunohistochemistry (Formalin/PFA-fixed paraffin-embedded sections) - Anti-POMC antibody [EPR17571] (ab210605)

Immunohistochemical analysis of paraffin-embedded human kidney tissue labeling POMC with ab210605 at 1/16000 dilution, followed by Goat Anti-Rabbit IgG H&L (HRP) ([ab97051](#)) at 1/500 dilution.

Negative staining on human kidney.

Counter stained with Hematoxylin.

Perform heat mediated antigen retrieval with Tris/EDTA buffer pH 9.0 before commencing with IHC staining protocol.



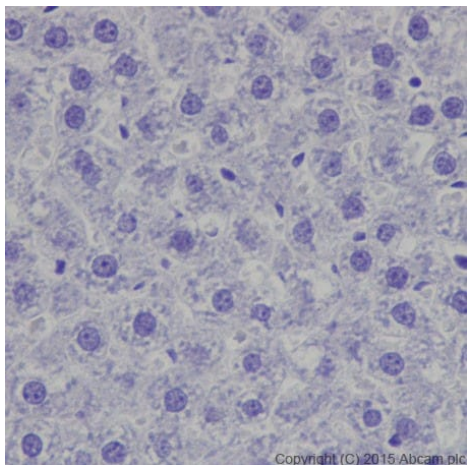
Immunohistochemistry (Formalin/PFA-fixed paraffin-embedded sections) - Anti-POMC antibody [EPR17571] (ab210605)

Immunohistochemical analysis of paraffin-embedded human colon cancer tissue labeling POMC with ab210605 at 1/16000 dilution, followed by Goat Anti-Rabbit IgG H&L (HRP) ([ab97051](#)) at 1/500 dilution.

Negative staining on human colon cancer.

Counter stained with Hematoxylin.

Perform heat mediated antigen retrieval with Tris/EDTA buffer pH 9.0 before commencing with IHC staining protocol.



Immunohistochemical analysis of paraffin-embedded rat liver tissue labeling POMC with ab210605 at 1/16000 dilution, followed by Goat Anti-Rabbit IgG H&L (HRP) ([ab97051](#)) at 1/500 dilution.

Negative staining on rat liver.

Counter stained with Hematoxylin.

Perform heat mediated antigen retrieval with Tris/EDTA buffer pH 9.0 before commencing with IHC staining protocol.

Immunohistochemistry (Formalin/PFA-fixed paraffin-embedded sections) - Anti-POMC antibody [EPR17571] (ab210605)

#### Why choose a recombinant antibody?



**Research with confidence**  
Consistent and reproducible results



**Long-term and scalable supply**  
Recombinant technology



**Success from the first experiment**  
Confirmed specificity



**Ethical standards compliant**  
Animal-free production

Anti-POMC antibody [EPR17571] (ab210605)

**Please note:** All products are "FOR RESEARCH USE ONLY. NOT FOR USE IN DIAGNOSTIC PROCEDURES"

#### Our Abpromise to you: Quality guaranteed and expert technical support

- Replacement or refund for products not performing as stated on the datasheet



- Valid for 12 months from date of delivery
- Response to your inquiry within 24 hours
- We provide support in Chinese, English, French, German, Japanese and Spanish
- Extensive multi-media technical resources to help you
- We investigate all quality concerns to ensure our products perform to the highest standards

If the product does not perform as described on this datasheet, we will offer a refund or replacement. For full details of the Abpromise, please visit <https://www.abcam.cn/abpromise> or contact our technical team.

#### **Terms and conditions**

---

- Guarantee only valid for products bought direct from Abcam or one of our authorized distributors