

Anti-Poly (ADP-Ribose) Polymer antibody ab14460

★★★★★ [2 Abreviews](#) [15 References](#) [4 图像](#)

概述

产品名称	Anti-Poly (ADP-Ribose) Polymer抗体
描述	鸡多克隆抗体to Poly (ADP-Ribose) Polymer
宿主	Chicken
特异性	This antibody recognizes Poly (ADP-Ribose) Polymer synthesized by a variety of poly(ADP-ribose) polymerases (PARP)-related enzymes, including PARP1, 2, 3, tankyrase, vPARP, sPARP and others. It does not cross-react with ADP-ribose, 5'-AMP, or yeast RNA as tested by ELISA. It does cross-react to bovine serum albumin due to its use as a carrier for the immunogen.
经测试应用	适用于: ICC/IF, IHC-Fr, WB, ELISA, IHC-P
种属反应性	与反应: Human, Species independent
免疫原	Other Immunogen Type corresponding to Poly (ADP-Ribose) Polymer. Purified Poly (ADP-Ribose) Polymer mixed with methylated bovine serum albumin.
常规说明	<p>The Life Science industry has been in the grips of a reproducibility crisis for a number of years. Abcam is leading the way in addressing this with our range of recombinant monoclonal antibodies and knockout edited cell lines for gold-standard validation. Please check that this product meets your needs before purchasing.</p> <p>If you have any questions, special requirements or concerns, please send us an inquiry and/or contact our Support team ahead of purchase. Recommended alternatives for this product can be found below, along with publications, customer reviews and Q&As</p>

性能

形式	Liquid
存放说明	Shipped at 4°C. Store at +4°C short term (1-2 weeks). Store at -20°C or -80°C. Avoid freeze / thaw cycle.
存储溶液	pH: 7.40 Preservative: 0.02% Sodium azide Constituents: 0.316% Tris HCl, 0.87% Sodium chloride
纯度	IgY fraction
克隆	多克隆
同种型	IgY

应用

The Abpromise guarantee **Abpromise™** 承诺保证使用 ab14460 于以下的经测试应用

“应用说明”部分 下显示的仅为推荐的起始稀释度；实际最佳的稀释度/浓度应由使用者检定。

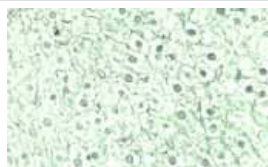
应用	Ab评论	说明
ICC/IF	★★★★★ (1)	1/200.
IHC-Fr		Use at an assay dependent concentration.
WB	★★★★★ (1)	Use a concentration of 1 - 10 µg/ml. Predicted molecular weight: 1 kDa.
ELISA		Use at an assay dependent concentration. It is recommended to start with a 1/100 dilution.
IHC-P		Use at an assay dependent concentration.

靶标

相关性

Poly (ADP-Ribose) is a polymer synthesized by a class of enzymes named poly(ADP-ribose) polymerases (PARP). Using NAD⁺ as substrate, PARP catalyzes the formation of the polymer poly (ADP-Ribose), with chain lengths ranging from 2 to 300 residues, containing approximately 2% branching in the chain. Poly (ADP-Ribose) polymer becomes attached to nuclear proteins, and to PARP itself (automodification). Under normal conditions, cells display low basal level of poly (ADP-Ribose) polymer, which can dramatically increase in cells exposed to DNA damaging agents (irradiation, alkylation, etc.). This increase of polymer synthesis is usually transient and is followed by a rapid degradation phase with a short half life which can be less than 1 min. The low endogenous level of polymer in unstimulated cells and its rapid catabolism during DNA damage has been ascribed to high activity of the polymer catabolizing enzyme poly(ADP-ribose) glycohydrolyase (PARG).

图片



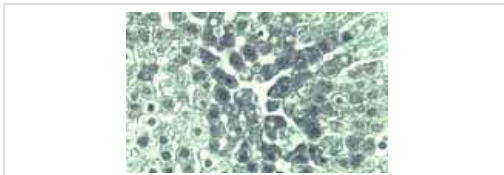
Immunohistochemistry (Frozen sections) - Anti-Poly (ADP-Ribose) Polymer antibody (ab14460)

Poly (ADP-Ribose) Polymer staining of untreated rat liver, with ab14460 at a concentration of 20µg/ml.



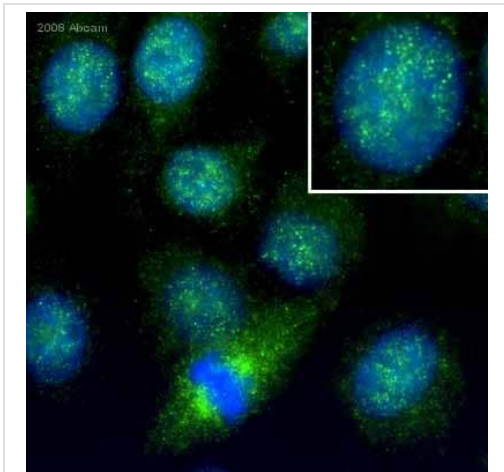
Western blot - Anti-Poly (ADP-Ribose) Polymer antibody (ab14460)

Western blot analysis of Poly (ADP-Ribose) Polymer. Lane 1: control HL60 cells (75,000 cells). Lane 2: cells automodified with PARP1. Note the apparent shift in molecular weight PARP1 from 116kDa to a broad range >250kDa due to various extents of Poly (ADP-Ribose) Polymer automodification. ab14460 was used at a concentration of 10 µg/ml.



Immunohistochemistry (Frozen sections) - Anti-Poly (ADP-Ribose) Polymer antibody (ab14460)

Poly (ADP-Ribose) Polymer staining of livers from rats injected with diethylnitrosamine (200 mg/kg). The livers were removed and rapidly processed 10 hr later, at peak polymer induction. ab14460 was used at a concentration of 20µg/ml



Immunocytochemistry/ Immunofluorescence - Anti-Poly (ADP-Ribose) Polymer antibody (ab14460)

This image is courtesy of an Abreview submitted by Dr Alexander Rapp

ab14460 staining cultured human HeLa cells by ICC/IF. Cells were PFA fixed and permeabilized in 0.5% Triton X100 prior to blocking in 5% BSA for 1 hour at 20°C. The primary antibody was diluted 1/200 and incubated with the sample for 1 hour at 20°C. A Cy5® conjugated donkey anti-chicken antibody diluted 1/300 was used as the secondary.

Please note: All products are "FOR RESEARCH USE ONLY. NOT FOR USE IN DIAGNOSTIC PROCEDURES"

Our Abpromise to you: Quality guaranteed and expert technical support

- Replacement or refund for products not performing as stated on the datasheet
- Valid for 12 months from date of delivery
- Response to your inquiry within 24 hours

- We provide support in Chinese, English, French, German, Japanese and Spanish
- Extensive multi-media technical resources to help you
- We investigate all quality concerns to ensure our products perform to the highest standards

If the product does not perform as described on this datasheet, we will offer a refund or replacement. For full details of the Abpromise, please visit <https://www.abcam.cn/abpromise> or contact our technical team.

Terms and conditions

- Guarantee only valid for products bought direct from Abcam or one of our authorized distributors