


### Anti-Plzf antibody ab39354

★☆☆☆☆ **3 Abreviews** **16 References** **2 图像**

#### 概述

产品名称	Anti-Plzf抗体
描述	兔多克隆抗体to Plzf
宿主	Rabbit
经测试应用	适用于: WB
种属反应性	与反应: Human, Zebrafish 预测可用于: Mouse, Rat, Cow 
免疫原	Synthetic peptide corresponding to Human Plzf aa 650 to the C-terminus conjugated to keyhole limpet haemocyanin. (Peptide available as <b>ab39353</b> )
阳性对照	This antibody gave a positive signal in HL60 and Ramos whole cell lysates.
常规说明	<p>The Life Science industry has been in the grips of a reproducibility crisis for a number of years. Abcam is leading the way in addressing this with our range of recombinant monoclonal antibodies and knockout edited cell lines for gold-standard validation. Please check that this product meets your needs before purchasing.</p> <p>If you have any questions, special requirements or concerns, please send us an inquiry and/or contact our Support team ahead of purchase. Recommended alternatives for this product can be found below, along with publications, customer reviews and Q&amp;As</p>

#### 性能

形式	Liquid
存放说明	Shipped at 4°C. Store at +4°C short term (1-2 weeks). Upon delivery aliquot. Store at -20°C or -80°C. Avoid freeze / thaw cycle.
存储溶液	pH: 7.40 Preservative: 0.02% Sodium azide Constituent: PBS
纯度	Batches of this product that have a concentration < 1mg/ml may have BSA added as a stabilising agent. If you would like information about the formulation of a specific lot, please contact our scientific support team who will be happy to help. Immunogen affinity purified

克隆 多克隆  
同种型 IgG

## 应用

**The Abpromise guarantee** **Abpromise™**承诺保证使用ab39354于以下的经测试应用

“应用说明”部分 下显示的仅为推荐的起始稀释度;实际最佳的稀释度/浓度应由使用者检定。

应用	Ab评论	说明
WB		Use a concentration of 1 µg/ml. Detects a band of approximately 85 kDa (predicted molecular weight: 75 kDa).Can be blocked with <b>Human Plzf peptide (ab39353)</b> .

## 靶标

**功能** Probable transcription factor. May play a role in myeloid maturation and in the development and/or maintenance of other differentiated tissues. Probable substrate-recognition component of an E3 ubiquitin-protein ligase complex which mediates the ubiquitination and subsequent proteasomal degradation of target proteins.

**组织特异性** Within the hematopoietic system, PLZF is expressed in bone marrow, early myeloid cell lines and peripheral blood mononuclear cells. Also expressed in the ovary, and at lower levels, in the kidney and lung.

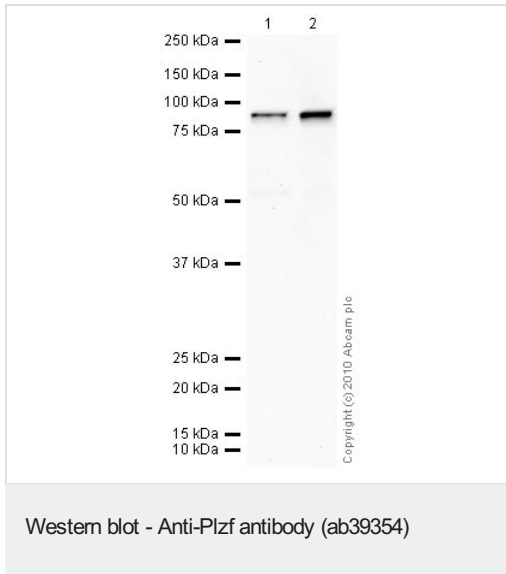
**通路** Protein modification; protein ubiquitination.

**疾病相关** Skeletal defects, genital hypoplasia, and mental retardation  
A chromosomal aberration involving ZBTB16 may be a cause of acute promyelocytic leukemia (APL). Translocation t(11;17)(q32;q21) with RARA.

**序列相似性** Belongs to the krueppel C2H2-type zinc-finger protein family.  
Contains 1 BTB (POZ) domain.  
Contains 9 C2H2-type zinc fingers.

**细胞定位** Nucleus.

## 图片



**All lanes :** Anti-Plzf antibody (ab39354) at 1 µg/ml

**Lane 1 :** HL60 (Human promyelocytic leukemia cell line) Whole Cell Lysate

**Lane 2 :** Ramos (Human Burkitt's lymphoma cell line) Whole Cell Lysate

Lysates/proteins at 10 µg per lane.

**Secondary**

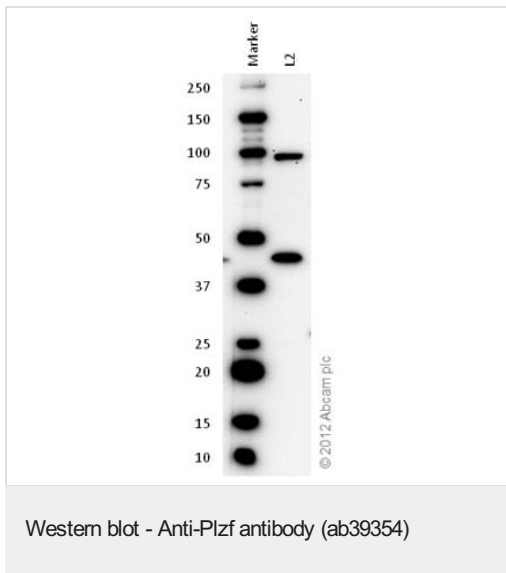
**All lanes :** Goat polyclonal to Rabbit IgG - H&L - Pre-Adsorbed (HRP) at 1/3000 dilution

Performed under reducing conditions.

**Predicted band size:** 75 kDa

**Observed band size:** 85 kDa

**Exposure time:** 15 minutes



**All lanes :** Anti-Plzf antibody (ab39354) at 1.25 µg/ml

**Lane 1 :** Marker

**Lane 2 :** Zebrafish brain homogenate at 20 µg

**Secondary**

**All lanes :** Goat Anti-Rabbit IgG H&L (HRP) preadsorbed (**ab97080**) at 1/10000 dilution

Developed using the ECL technique.

Performed under reducing conditions.

**Predicted band size:** 75 kDa

**Observed band size:** 87 kDa

**Exposure time:** 5 minutes

**Please note:** All products are "FOR RESEARCH USE ONLY. NOT FOR USE IN DIAGNOSTIC PROCEDURES"

### **Our Abpromise to you: Quality guaranteed and expert technical support**

---

- Replacement or refund for products not performing as stated on the datasheet
- Valid for 12 months from date of delivery
- Response to your inquiry within 24 hours
  
- We provide support in Chinese, English, French, German, Japanese and Spanish
- Extensive multi-media technical resources to help you
- We investigate all quality concerns to ensure our products perform to the highest standards

If the product does not perform as described on this datasheet, we will offer a refund or replacement. For full details of the Abpromise, please visit <https://www.abcam.cn/abpromise> or contact our technical team.

### **Terms and conditions**

---

- Guarantee only valid for products bought direct from Abcam or one of our authorized distributors