

Anti-Plexin B2/MM1 antibody [EPR9965] ab193355

敲除验证
重组
RabMAb

★★★★☆
[1 Abreviews](#)
[4 References](#)
[6 图像](#)

概述

产品名称	Anti-Plexin B2/MM1 抗体[EPR9965]
描述	兔单克隆抗体[EPR9965] to Plexin B2/MM1
宿主	Rabbit
经测试应用	适用于: Flow Cyt (Intra), WB
种属反应性	与反应: Mouse, Rat, Human
免疫原	Synthetic peptide. This information is proprietary to Abcam and/or its suppliers.
阳性对照	HeLa, Human fetal brain, U87-MG, rat brain, RAW264.7, NIH/3T3 and 293T lysate. U87-MG cells.
常规说明	<p>This product is a recombinant monoclonal antibody, which offers several advantages including:</p> <ul style="list-style-type: none"> - High batch-to-batch consistency and reproducibility - Improved sensitivity and specificity - Long-term security of supply - Animal-free production <p>For more information see here.</p> <p>Our RabMAb[®] technology is a patented hybridoma-based technology for making rabbit monoclonal antibodies. For details on our patents, please refer to RabMAb[®] patents.</p>

性能

形式	Liquid
存放说明	Shipped at 4°C. Store at +4°C short term (1-2 weeks). Upon delivery aliquot. Store at -20°C long term. Avoid freeze / thaw cycle.
存储溶液	<p>pH: 7.2</p> <p>Preservative: 0.01% Sodium azide</p> <p>Constituents: 40% Glycerol (glycerin, glycerine), 59% PBS, 0.05% BSA</p>
纯度	Protein A purified
克隆	单克隆
克隆编号	EPR9965
同种型	IgG

应用

The Abpromise guarantee

Abpromise™ 承诺保证使用 ab193355 于以下的经测试应用

“应用说明”部分 下显示的仅为推荐的起始稀释度;实际最佳的稀释度/浓度应由使用者检定。

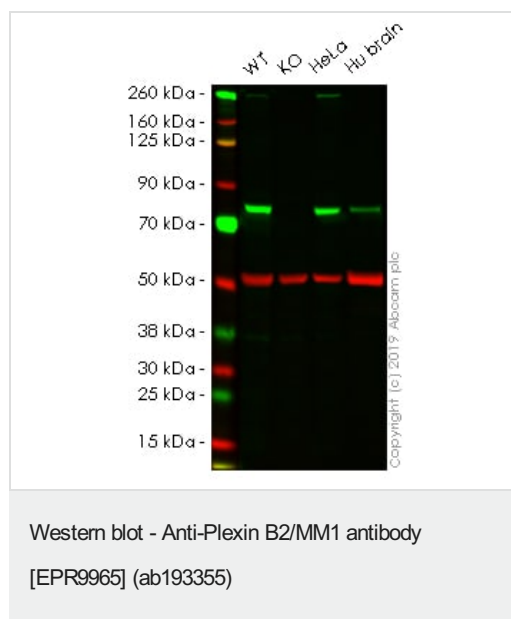
应用	Ab评论	说明
Flow Cyt (Intra)		1/90. ab172730 - Rabbit monoclonal IgG, is suitable for use as an isotype control with this antibody.
WB		1/1000 - 1/10000. Predicted molecular weight: 204 kDa.

靶标

相关性 Plexin B2/MM1 is a transmembrane receptor for the class 4 semaphorin, SEMA4D. This receptor has key roles in RHOA activation and subsequent changes of the actin cytoskeleton, axon guidance, invasive growth and cell migration.

细胞定位 Membrane; single-pass type I membrane protein.

图片



All lanes : Anti-Plexin B2/MM1 antibody [EPR9965] (ab193355) at 1/5000 dilution

Lane 1 : Wild-type HEK-293 (Human epithelial cell line from embryonic kidney) whole cell lysate

Lane 2 : PLXNB2 knockout HEK-293 (Human epithelial cell line from embryonic kidney) whole cell lysate

Lane 3 : HeLa (Human epithelial cell line from cervix adenocarcinoma) whole cell lysate

Lane 4 : Human brain whole cell lysate

Lysates/proteins at 20 µg per lane.

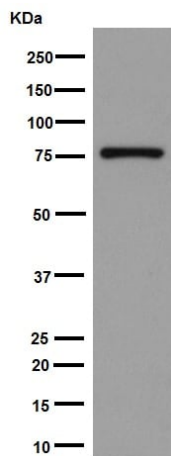
Performed under reducing conditions.

Predicted band size: 204 kDa

Observed band size: 80 kDa

Lanes 1 - 4: Merged signal (red and green). Green - ab193355 observed at 80 kDa. Red - loading control, **ab7291**, observed at 50 kDa.

ab193355 was shown to specifically react with in wild-type HEK-293 cells as signal was lost in PLXNB2 knockout cells. Wild-type and PLXNB2 knockout samples were subjected to SDS-PAGE. The membrane was blocked with 3% Milk. Ab193355 and **ab7291** (Mouse anti-Tubulin loading control) were incubated overnight at 4°C at 1/5000 dilution and 1/20000 dilution respectively. Blots were developed with Goat anti-Rabbit IgG H&L (IRDye® 800CW) preabsorbed **ab216773** and Goat anti-Mouse IgG H&L (IRDye® 680RD) preabsorbed **ab216776** secondary antibodies at 1/20000 dilution for 1 hour at room temperature before imaging.



Western blot - Anti-Plexin B2/MM1 antibody [EPR9965] (ab193355)

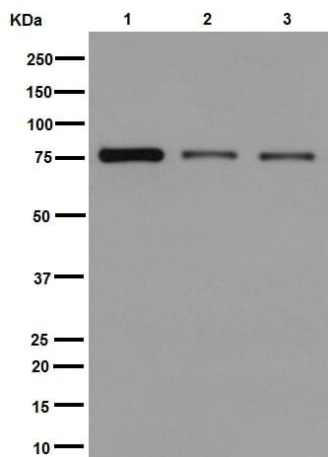
Anti-Plexin B2/MM1 antibody [EPR9965] (ab193355) at 1/10000 dilution + HeLa cell lysate at 20 µg

Secondary

Goat Anti-Rabbit IgG, (H+L), Peroxidase conjugated at 1/1000 dilution

Predicted band size: 204 kDa

Plexin B2/MM1 could be cleaved into two subunits. The band observed at 80 kDa should be a β-chain.



Western blot - Anti-Plexin B2/MM1 antibody [EPR9965] (ab193355)

All lanes : Anti-Plexin B2/MM1 antibody [EPR9965] (ab193355) at 1/1000 dilution

Lane 1 : Human fetal brain lysate

Lane 2 : U87-MG cell lysate

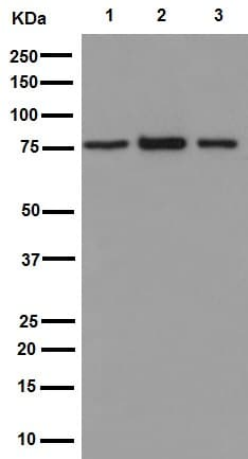
Lane 3 : 293T cell lysate

Lysates/proteins at 20 µg per lane.

Secondary

All lanes : Goat Anti-Rabbit IgG, (H+L), Peroxidase conjugated at 1/1000 dilution

Predicted band size: 204 kDa



Western blot - Anti-Plexin B2/MM1 antibody [EPR9965] (ab193355)

All lanes : Anti-Plexin B2/MM1 antibody [EPR9965] (ab193355) at 1/1000 dilution

Lane 1 : Rat brain lysate

Lane 2 : Raw264.7 lysate

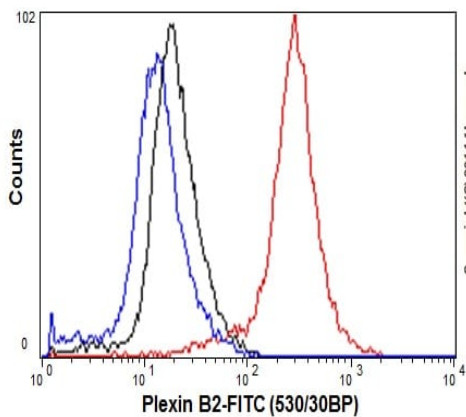
Lane 3 : NIH/3T3 lysate

Lysates/proteins at 10 µg per lane.

Secondary

All lanes : Goat Anti-Rabbit IgG, (H+L), Peroxidase conjugated at 1/1000 dilution

Predicted band size: 204 kDa



Flow Cytometry (Intracellular) - Anti-Plexin B2/MM1 antibody [EPR9965] (ab193355)

Intracellular Flow Cytometry analysis of U87-MG cells labeling Plexin B2/MM1 using ab193355 at a 1/90 dilution (red). Goat anti rabbit IgG (FITC) used as the secondary at a 1/150 dilution. Isotype control Rabbit monoclonal IgG (black). Unlabeled control/ colour cells without incubation with primary antibody/ secondary antibody (blue). Cells were fixed in 2% paraformaldehyde.

Why choose a recombinant antibody?

Research with confidence
Consistent and reproducible results

Long-term and scalable supply
Recombinant technology

Success from the first experiment
Confirmed specificity

Ethical standards compliant
Animal-free production

Anti-Plexin B2/MM1 antibody [EPR9965] (ab193355)

Please note: All products are "FOR RESEARCH USE ONLY. NOT FOR USE IN DIAGNOSTIC PROCEDURES"

Our Abpromise to you: Quality guaranteed and expert technical support

- Replacement or refund for products not performing as stated on the datasheet
- Valid for 12 months from date of delivery
- Response to your inquiry within 24 hours
- We provide support in Chinese, English, French, German, Japanese and Spanish
- Extensive multi-media technical resources to help you
- We investigate all quality concerns to ensure our products perform to the highest standards

If the product does not perform as described on this datasheet, we will offer a refund or replacement. For full details of the Abpromise, please visit <https://www.abcam.cn/abpromise> or contact our technical team.

Terms and conditions

- Guarantee only valid for products bought direct from Abcam or one of our authorized distributors