

Anti-PLCZ1 antibody ab181816

1 References **1 图像**

概述

产品名称	Anti-PLCZ1抗体
描述	兔多克隆抗体to PLCZ1
宿主	Rabbit
经测试应用	适用于: IHC-P
种属反应性	与反应: Human
免疫原	Synthetic peptide corresponding to Human PLCZ1 (internal sequence). Database link: Q86YW0
阳性对照	Human uterus endometrium tissue.
常规说明	<p>The Life Science industry has been in the grips of a reproducibility crisis for a number of years. Abcam is leading the way in addressing this with our range of recombinant monoclonal antibodies and knockout edited cell lines for gold-standard validation. Please check that this product meets your needs before purchasing.</p> <p>If you have any questions, special requirements or concerns, please send us an inquiry and/or contact our Support team ahead of purchase. Recommended alternatives for this product can be found below, along with publications, customer reviews and Q&As</p>

性能

形式	Liquid
存放说明	Shipped at 4°C. Store at +4°C short term (1-2 weeks). Upon delivery aliquot. Store at -20°C long term. Avoid freeze / thaw cycle.
存储溶液	Constituents: 1.21% Tris, 0.75% Glycine, 2% Sucrose
纯度	Protein A purified
克隆	多克隆
同种型	IgG

应用

The Abpromise guarantee

Abpromise™承诺保证使用ab181816于以下的经测试应用

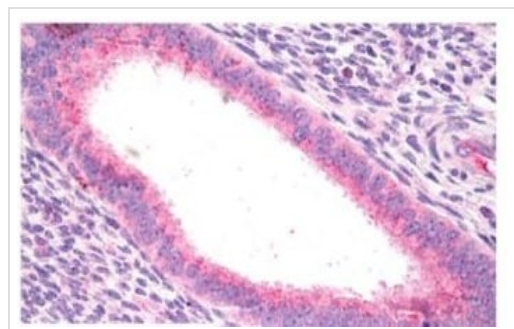
“应用说明”部分 下显示的仅为推荐的起始稀释度;实际最佳的稀释度/浓度应由使用者检定。

应用	Ab评论	说明
IHC-P		Use a concentration of 10 µg/ml. Perform heat mediated antigen retrieval before commencing with IHC staining protocol.

靶标

功能	The production of the second messenger molecules diacylglycerol (DAG) and inositol 1,4,5-trisphosphate (IP3) is mediated by activated phosphatidylinositol-specific phospholipase C enzymes. In vitro, hydrolyzes PtdIns(4,5)P2 in a Ca(2+)-dependent manner. Triggers intracellular Ca(2+) oscillations in oocytes solely during M phase and is involved in inducing oocyte activation and initiating embryonic development up to the blastocyst stage. Is therefore a strong candidate for the egg-activating soluble sperm factor that is transferred from the sperm into the egg cytoplasm following gamete membrane fusion. May exert an inhibitory effect on phospholipase-C-coupled processes that depend on calcium ions and protein kinase C, including CFTR trafficking and function.
组织特异性	Expressed specifically in testis. Weakly expressed in pancreatic-duct cells. Up-regulated in pancreatic-duct cells from patients with cystic fibrosis.
序列相似性	Contains 1 C2 domain. Contains 1 EF-hand domain. Contains 1 PI-PLC X-box domain. Contains 1 PI-PLC Y-box domain.
结构域	The EF-hand and C2 domains are essential for triggering Ca(2+) oscillating activity and the regulation of PLCZ1 enzyme activity. The X-Y linker region between PI-PLC X-box and Y-box domains may be a target for proteolysis and may play an important regulatory role during fertilization.
细胞定位	Nucleus. Cytoplasm > perinuclear region. Exhibits alternative cytoplasmic/nuclear localization during development. Translocates from the pronucleus into cytoplasm upon nuclear envelope breakdown for mitosis and localizes again to the pronucleus at interphase following meiosis and mitosis.

图片



Immunohistochemical analysis of formalin-fixed, paraffin-embedded Human uterus endometrium tissue labeling PLCZ1 with ab181816 at 10 µg/ml.

Immunohistochemistry (Formalin/PFA-fixed paraffin-embedded sections) - Anti-PLCZ1 antibody (ab181816)

Please note: All products are "FOR RESEARCH USE ONLY. NOT FOR USE IN DIAGNOSTIC PROCEDURES"

Our Abpromise to you: Quality guaranteed and expert technical support

- Replacement or refund for products not performing as stated on the datasheet
- Valid for 12 months from date of delivery
- Response to your inquiry within 24 hours

- We provide support in Chinese, English, French, German, Japanese and Spanish
- Extensive multi-media technical resources to help you
- We investigate all quality concerns to ensure our products perform to the highest standards

If the product does not perform as described on this datasheet, we will offer a refund or replacement. For full details of the Abpromise, please visit <https://www.abcam.cn/abpromise> or contact our technical team.

Terms and conditions

- Guarantee only valid for products bought direct from Abcam or one of our authorized distributors