

# Anti-Placental alkaline phosphatase (PLAP) antibody [8B6] ab33

**6 References**   [1 图像](#)

### 概述

产品名称	Anti-Placental alkaline phosphatase (PLAP)抗体[8B6]
描述	小鼠单克隆抗体[8B6] to Placental alkaline phosphatase (PLAP)
宿主	Mouse
经测试应用	适用于: WB
种属反应性	与反应: Human
免疫原	Tissue, cells or virus corresponding to Placental alkaline phosphatase (PLAP). Fresh Hep-2 cells followed by booster injections of fresh Hep-2 cells that have had their surface expression of PLAP boosted in culture.
阳性对照	WB: Human placenta tissue lysate.
常规说明	<p>This antibody clone is manufactured by Abcam. If you require a custom buffer formulation or conjugation for your experiments, please contact <a href="mailto:orders@abcam.com">orders@abcam.com</a>.</p> <p>The Life Science industry has been in the grips of a reproducibility crisis for a number of years. Abcam is leading the way in addressing this with our range of recombinant monoclonal antibodies and knockout edited cell lines for gold-standard validation. Please check that this product meets your needs before purchasing.</p> <p>If you have any questions, special requirements or concerns, please send us an inquiry and/or contact our Support team ahead of purchase. Recommended alternatives for this product can be found below, along with publications, customer reviews and Q&amp;As</p>

### 性能

形式	Liquid
存放说明	Shipped at 4°C. Store at +4°C short term (1-2 weeks). Upon delivery aliquot. Store at -20°C long term. Avoid freeze / thaw cycle.
存储溶液	Constituent: 0.02% PBS
纯度	Protein G purified
克隆	单克隆
克隆编号	8B6
骨髓瘤	P3-NS1/1-Ag4-1
同种型	IgG2a

轻链类型

kappa

应用

The Abpromise guarantee      **Abpromise™**承诺保证使用ab33于以下的经测试应用

“应用说明”部分 下显示的仅为推荐的起始稀释度;实际最佳的稀释度/浓度应由使用者检定。

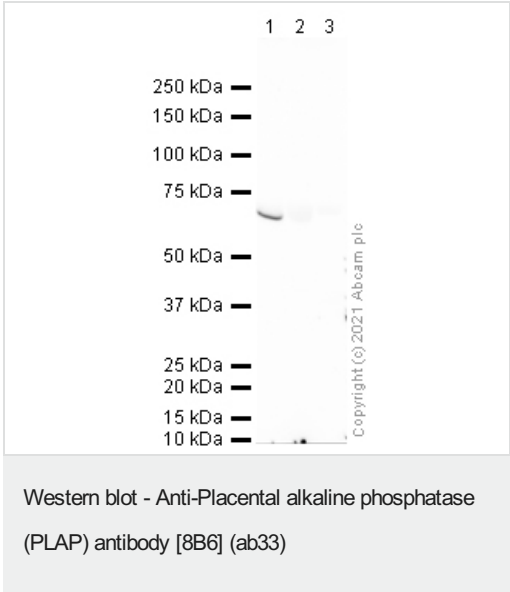
应用	Ab评论	说明
WB		Use a concentration of 5 µg/ml. Detects a band of approximately 65 kDa (predicted molecular weight: 58 kDa).

靶标

序列相似性      Belongs to the alkaline phosphatase family.

细胞定位      Cell membrane.

图片



**All lanes :** Anti-Placental alkaline phosphatase (PLAP) antibody [8B6] (ab33) at 5 µg/ml

- Lane 1 :** Human placenta tissue lysate  
**Lane 2 :** Human kidney tissue lysate (negative control)  
**Lane 3 :** Human liver tissue lysate (negative control)

Lysates/proteins at 10 µg per lane.

**Secondary**  
**All lanes :** Goat polyclonal to Mouse IgG - H&L - Pre-Adsorbed (HRP) at 1/5000 dilution

**Predicted band size:** 58 kDa  
**Observed band size:** 65 kDa

**Exposure time:** 8 minutes

**Blocking buffer:** 3% milk.  
**Gel Type:** MOPS.

**Please note:** All products are "FOR RESEARCH USE ONLY. NOT FOR USE IN DIAGNOSTIC PROCEDURES"

### **Our Abpromise to you: Quality guaranteed and expert technical support**

---

- Replacement or refund for products not performing as stated on the datasheet
- Valid for 12 months from date of delivery
- Response to your inquiry within 24 hours
  
- We provide support in Chinese, English, French, German, Japanese and Spanish
- Extensive multi-media technical resources to help you
- We investigate all quality concerns to ensure our products perform to the highest standards

If the product does not perform as described on this datasheet, we will offer a refund or replacement. For full details of the Abpromise, please visit <https://www.abcam.cn/abpromise> or contact our technical team.

### **Terms and conditions**

---

- Guarantee only valid for products bought direct from Abcam or one of our authorized distributors