


Anti-PKM antibody [EPR10138(B)] ab150377

重组 RabMAb

★★★★★ **3 Abreviews** **23 References** **4 图像**

概述

产品名称	Anti-PKM抗体[EPR10138(B)]
描述	兔单克隆抗体[EPR10138(B)] to PKM
宿主	Rabbit
经测试应用	适用于: Flow Cyt (Intra), ICC/IF, WB
种属反应性	与反应: Mouse, Rat, Human 预测可用于: Pig 
免疫原	Synthetic peptide within Human PKM aa 50-150. The exact sequence is proprietary. Database link: P14618
阳性对照	WB: HeLa, Jurkat, A549, Mouse lung, human skeletal muscle, rat skeletal muscle, mouse skeletal muscle lysates
常规说明	<p>We are constantly working hard to ensure we provide our customers with best in class antibodies. As a result of this work we are pleased to now offer this antibody in purified format. We are in the process of updating our datasheets. The purified format is designated 'PUR' on our product labels. If you have any questions regarding this update, please contact our Scientific Support team.</p> <p>This product is a recombinant monoclonal antibody, which offers several advantages including:</p> <ul style="list-style-type: none">- High batch-to-batch consistency and reproducibility- Improved sensitivity and specificity- Long-term security of supply- Animal-free production <p>For more information see here.</p> <p>Our RabMAb[®] technology is a patented hybridoma-based technology for making rabbit monoclonal antibodies. For details on our patents, please refer to RabMAb[®] patents.</p>

性能

形式	Liquid
存放说明	Shipped at 4°C. Upon delivery aliquot and store at -20°C. Avoid repeated freeze / thaw cycles.
存储溶液	pH: 7.20 Preservative: 0.01% Sodium azide

纯度	Constituents: 59% PBS, 40% Glycerol (glycerin, glycerine), 0.05% BSA
克隆	Protein A purified
克隆编号	单克隆
同种型	EPR10138(B)
	IgG

应用

The Abpromise guarantee **Abpromise™**承诺保证使用ab150377于以下的经测试应用

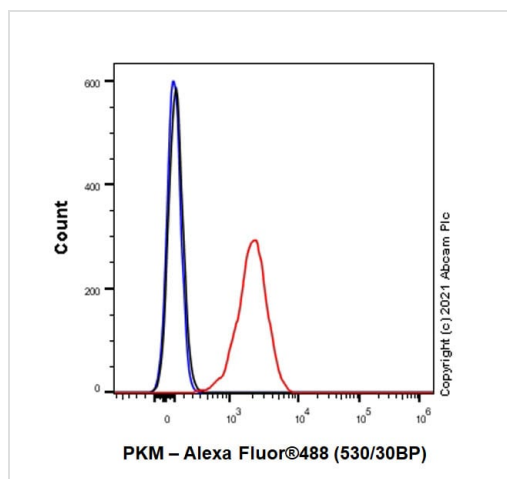
“应用说明”部分 下显示的仅为推荐的起始稀释度;实际最佳的稀释度/浓度应由使用者检定。

应用	Ab评论	说明
Flow Cyt (Intra)		1/50. ab172730 - Rabbit monoclonal IgG, is suitable for use as an isotype control with this antibody.
ICC/IF	★☆☆☆☆ (1)	1/50.
WB	★★★★★ (2)	1/10000. Predicted molecular weight: 58 kDa.

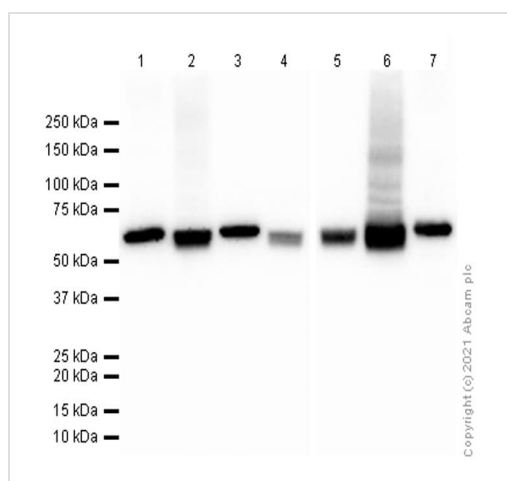
靶标

功能	Glycolytic enzyme that catalyzes the transfer of a phosphoryl group from phosphoenolpyruvate (PEP) to ADP, generating ATP. Stimulates POU5F1-mediated transcriptional activation. Plays a general role in caspase independent cell death of tumor cells. The ratio between the highly active tetrameric form and nearly inactive dimeric form determines whether glucose carbons are channeled to biosynthetic processes or used for glycolytic ATP production. The transition between the 2 forms contributes to the control of glycolysis and is important for tumor cell proliferation and survival.
组织特异性	Specifically expressed in proliferating cells, such as embryonic stem cells, embryonic carcinoma cells, as well as cancer cells.
通路	Carbohydrate degradation; glycolysis; pyruvate from D-glyceraldehyde 3-phosphate: step 5/5.
序列相似性	Belongs to the pyruvate kinase family.
翻译后修饰	ISGylated. Under hypoxia, hydroxylated by EGLN3. Acetylation at Lys-305 is stimulated by high glucose concentration, it decreases enzyme activity and promotes its lysosomal-dependent degradation via chaperone-mediated autophagy. FGFR1-dependent tyrosine phosphorylation is reduced by interaction with TRIM35.
细胞定位	Cytoplasm. Nucleus. Translocates to the nucleus in response to different apoptotic stimuli. Nuclear translocation is sufficient to induce cell death that is caspase independent, isoform-specific and independent of its enzymatic activity.

图片



Flow Cytometry (Intracellular) - Anti-PKM antibody
[EPR10138(B)] (ab150377)



Western blot - Anti-PKM antibody [EPR10138(B)]
(ab150377)

Flow Cytometry analysis of HeLa (Human cervix adenocarcinoma epithelial cell) cells labelling PKM with Purified ab150377 at 1:50 dilution (10 µg/ml) (Red). Cells were fixed with 4% Paraformaldehyde and permeabilised with 90% Methanol. A Goat anti rabbit IgG (Alexa Fluor™ 488, **ab150077**) secondary antibody was used at 1:2000. Isotype control - Rabbit monoclonal IgG (Black). Unlabelled control - Cell without incubation with primary antibody and secondary antibody (Blue).

All lanes : Anti-PKM antibody [EPR10138(B)] (ab150377) at 1/10000 dilution (Purified)

Lane 1 : HeLa (Human cervix adenocarcinoma epithelial cell) whole cell lysate

Lane 2 : Jurkat (Human T cell leukemia T lymphocyte) whole cell lysate

Lane 3 : A549 (Human lung carcinoma epithelial cell) whole cell lysate

Lane 4 : Mouse lung lysate

Lane 5 : Human skeletal muscle lysate

Lane 6 : Rat skeletal muscle lysate

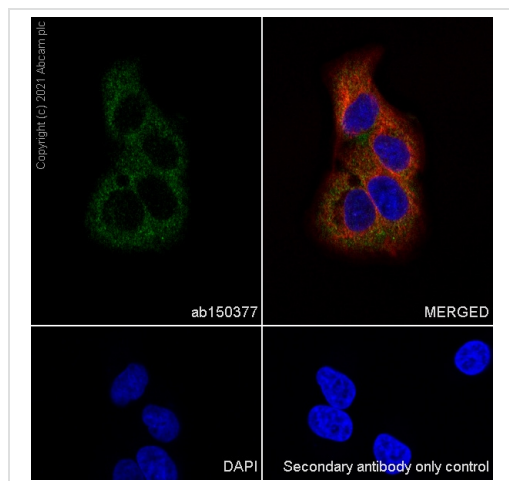
Lane 7 : Mouse skeletal muscle lysate

Secondary

All lanes : Goat Anti-Rabbit IgG (HRP) with minimal cross-reactivity with human IgG at 1/2000 dilution

Predicted band size: 58 kDa





Observed band size: 58 kDa



Immunocytochemistry/ Immunofluorescence - Anti-PKM antibody [EPR10138(B)] (ab150377)

Immunocytochemistry analysis of A549(Human lung carcinoma epithelial cell) cells labeling PKM with Purified ab150377 at 1/50 dilution (10 µg/mL). Cells were fixed in 4% Paraformaldehyde and permeabilized with 0.1% tritonX-100. Cells were counterstained with Ab195889 Anti-alpha Tubulin antibody [DM1A+H10:L10] - Microtubule Marker (Alexa Fluor® 594) 1/200 (2.5 µg/mL). Goat anti rabbit IgG (Alexa Fluor® 488, **ab150077**) was used as the secondary antibody at 1/1000 (2 µg/mL) dilution. DAPI (blue) was used as nuclear counterstain. PBS instead of the primary antibody was used as the secondary antibody only control.

Why choose a recombinant antibody?

 <p>Research with confidence Consistent and reproducible results</p>	 <p>Long-term and scalable supply Recombinant technology</p>
 <p>Success from the first experiment Confirmed specificity</p>	 <p>Ethical standards compliant Animal-free production</p>

Anti-PKM antibody [EPR10138(B)] (ab150377)

Please note: All products are "FOR RESEARCH USE ONLY. NOT FOR USE IN DIAGNOSTIC PROCEDURES"

Our Abpromise to you: Quality guaranteed and expert technical support

- Replacement or refund for products not performing as stated on the datasheet
- Valid for 12 months from date of delivery
- Response to your inquiry within 24 hours

- We provide support in Chinese, English, French, German, Japanese and Spanish
- Extensive multi-media technical resources to help you
- We investigate all quality concerns to ensure our products perform to the highest standards

If the product does not perform as described on this datasheet, we will offer a refund or replacement. For full details of the Abpromise, please visit <https://www.abcam.cn/abpromise> or contact our technical team.

Terms and conditions

- Guarantee only valid for products bought direct from Abcam or one of our authorized distributors