

Anti-PKM antibody ab137791

★★★★★ [6 Abreviews](#) [17 References](#) [8 图像](#)

概述

产品名称	Anti-PKM抗体
描述	兔多克隆抗体to PKM
宿主	Rabbit
经测试应用	适用于: IP, WB, IHC-P
种属反应性	与反应: Mouse, Rat, Human
免疫原	Recombinant fragment corresponding to Human PKM aa 243-531. Database link: P14618

常规说明

The Life Science industry has been in the grips of a reproducibility crisis for a number of years. Abcam is leading the way in addressing this with our range of recombinant monoclonal antibodies and knockout edited cell lines for gold-standard validation. Please check that this product meets your needs before purchasing.

If you have any questions, special requirements or concerns, please send us an inquiry and/or contact our Support team ahead of purchase. Recommended alternatives for this product can be found below, along with publications, customer reviews and Q&As

性能

形式	Liquid
存放说明	Shipped at 4°C. Store at +4°C short term (1-2 weeks). Upon delivery aliquot. Store at -20°C or -80°C. Avoid freeze / thaw cycle.
存储溶液	pH: 7.00 Preservative: 0.025% Proclin 300 Constituents: 79% PBS, 20% Glycerol (glycerin, glycerine)
纯度	Immunogen affinity purified
克隆	多克隆
同种型	IgG

应用

The Abpromise guarantee

Abpromise™ 承诺保证使用ab137791于以下的经测试应用

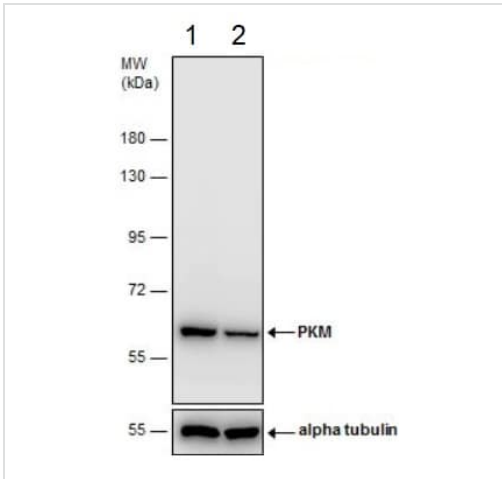
“应用说明”部分 下显示的仅为推荐的起始稀释度;实际最佳的稀释度/浓度应由使用者检定。

应用	Ab评论	说明
IP		1/100 - 1/500.
WB	★★★★★ (6)	1/500 - 1/3000. Predicted molecular weight: 58 kDa.
IHC-P		1/100 - 1/1000. Perform heat mediated antigen retrieval with citrate buffer pH 6 before commencing with IHC staining protocol.

靶标

功能	Glycolytic enzyme that catalyzes the transfer of a phosphoryl group from phosphoenolpyruvate (PEP) to ADP, generating ATP. Stimulates POU5F1-mediated transcriptional activation. Plays a general role in caspase independent cell death of tumor cells. The ratio between the highly active tetrameric form and nearly inactive dimeric form determines whether glucose carbons are channeled to biosynthetic processes or used for glycolytic ATP production. The transition between the 2 forms contributes to the control of glycolysis and is important for tumor cell proliferation and survival.
组织特异性	Specifically expressed in proliferating cells, such as embryonic stem cells, embryonic carcinoma cells, as well as cancer cells.
通路	Carbohydrate degradation; glycolysis; pyruvate from D-glyceraldehyde 3-phosphate: step 5/5.
序列相似性	Belongs to the pyruvate kinase family.
翻译后修饰	ISGylated. Under hypoxia, hydroxylated by EGLN3. Acetylation at Lys-305 is stimulated by high glucose concentration, it decreases enzyme activity and promotes its lysosomal-dependent degradation via chaperone-mediated autophagy. FGFR1-dependent tyrosine phosphorylation is reduced by interaction with TRIM35.
细胞定位	Cytoplasm. Nucleus. Translocates to the nucleus in response to different apoptotic stimuli. Nuclear translocation is sufficient to induce cell death that is caspase independent, isoform-specific and independent of its enzymatic activity.

图片



Western blot - Anti-PKM antibody (ab137791)

All lanes : Anti-PKM antibody (ab137791) at 1/5000 dilution

Lane 1 : Non-transfected (-) HEK-293T (human epithelial cell line from embryonic kidney transformed with large T antigen) whole cell lysate

Lane 2 : HEK-293T whole cell extracts transfected (+) with PKM shRNA

Lysates/proteins at 30 µg per lane.

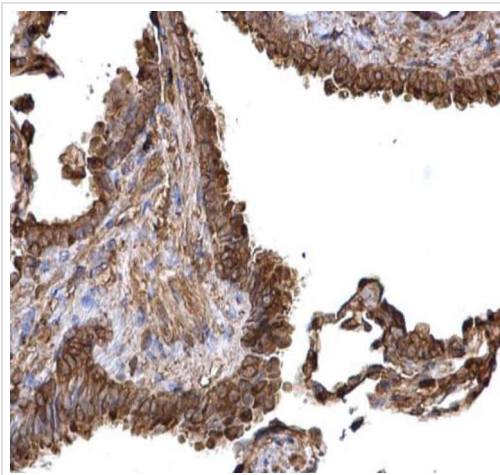
Secondary

All lanes : HRP-conjugated anti-rabbit IgG antibody

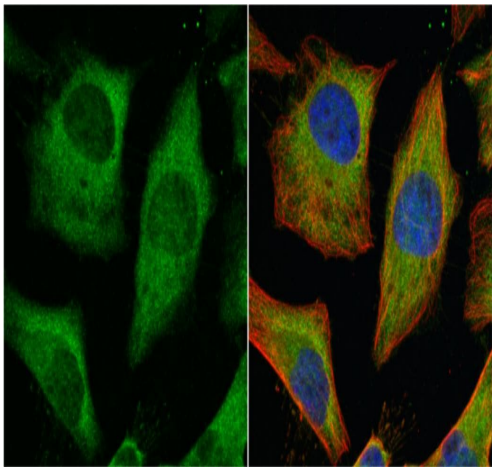
Predicted band size: 58 kDa

7.5% SDS-PAGE

Immunohistochemical analysis of paraffin-embedded human lung carcinoma tissue staining PKM protein at cytosol with ab137791 at 1/500 dilution. Antigen Retrieval: EDTA based buffer, pH 8.0, 15min.

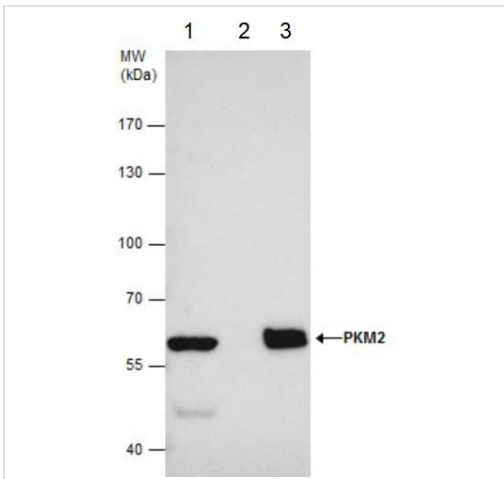


Immunohistochemistry (Formalin/PFA-fixed paraffin-embedded sections) - Anti-PKM antibody (ab137791)



Immunofluorescence analysis of 4% paraformaldehyde-fixed HeLa (human epithelial cell line from cervix adenocarcinoma) whole cell labelling Pyruvate Kinase (muscle) antibody detects Pyruvate Kinase (muscle) protein at cytoplasm (green) with ab137791 at 1/500 dilution. Red: alpha Tubulin, a cytoskeleton marker, stained by alpha Tubulin antibody at 1/500 dilution. Blue: Hoechst 33342 staining.

Immunoprecipitation - Anti-PKM antibody
(ab137791)



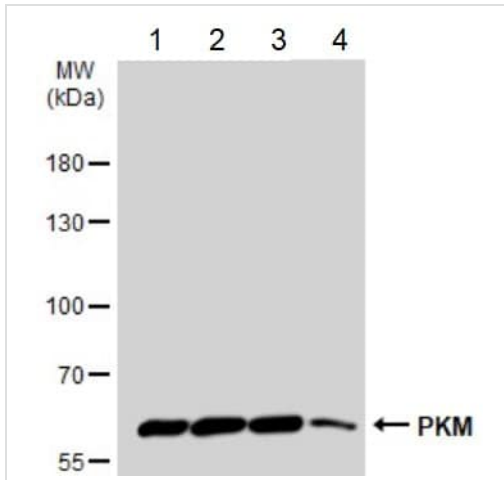
Immunoprecipitation of PKM2 protein from HEK-293T (human epithelial cell line from embryonic kidney transformed with large T antigen) whole cell lysate using 5 μ g of ab137791.

IP Sample:

- 1- HEK-293T cells
- 2- Control IgG
- 3- ab137791

Western blot analysis was performed using ab137791, followed by anti-Rabbit IgG antibody.

Immunoprecipitation - Anti-PKM antibody
(ab137791)



Western blot - Anti-PKM antibody (ab137791)

All lanes : Anti-PKM antibody (ab137791) at 1/1000 dilution

Lane 1 : HEK-293T (human epithelial cell line from embryonic kidney transformed with large T antigen) whole cell lysate

Lane 2 : A431 (human epidermoid carcinoma cell line) whole cell lysate

Lane 3 : HeLa (human epithelial cell line from cervix adenocarcinoma) whole cell lysate

Lane 4 : HepG2 (human liver hepatocellular carcinoma cell line) whole cell lysate

Lysates/proteins at 30 µg per lane.

Secondary

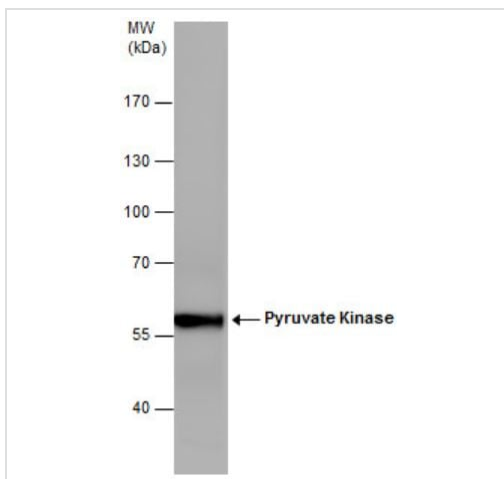
All lanes : HRP-conjugated anti-rabbit IgG antibody

Predicted band size: 58 kDa

7.5% SDS-PAGE

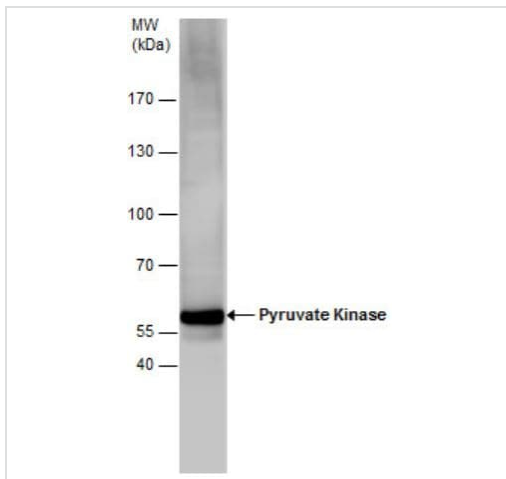
Mouse brain tissue lysate at 50 µg

Predicted band size: 58 kDa



Western blot - Anti-PKM antibody (ab137791)

7.5 % SDS-PAGE

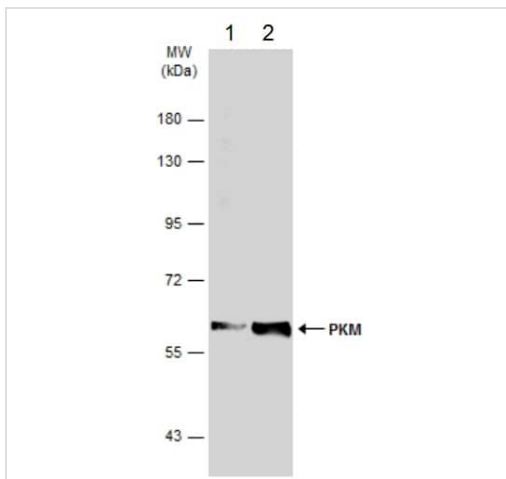


Western blot - Anti-PKM antibody (ab137791)

Anti-PKM antibody (ab137791) at 1/2000 dilution + Rat tissue lysate at 50 μ g

Predicted band size: 58 kDa

7.5 % SDS-PAGE



Western blot - Anti-PKM antibody (ab137791)

All lanes : Anti-PKM antibody (ab137791) at 1/5000 dilution

Lane 1 : Non-transfected (-) HEK-293T (human epithelial cell line from embryonic kidney transformed with large T antigen) whole cell lysate

Lane 2 : Transfected (+) HEK-293T whole cell lysate

Lysates/proteins at 30 μ g per lane.

Secondary

All lanes : HRP-conjugated anti-rabbit IgG antibody

Predicted band size: 58 kDa

7.5% SDS-PAGE

Please note: All products are "FOR RESEARCH USE ONLY. NOT FOR USE IN DIAGNOSTIC PROCEDURES"

Our Abpromise to you: Quality guaranteed and expert technical support

- Replacement or refund for products not performing as stated on the datasheet
- Valid for 12 months from date of delivery
- Response to your inquiry within 24 hours
- We provide support in Chinese, English, French, German, Japanese and Spanish

- Extensive multi-media technical resources to help you
- We investigate all quality concerns to ensure our products perform to the highest standards

If the product does not perform as described on this datasheet, we will offer a refund or replacement. For full details of the Abpromise, please visit <https://www.abcam.cn/abpromise> or contact our technical team.

Terms and conditions

- Guarantee only valid for products bought direct from Abcam or one of our authorized distributors