


### Anti-PKM antibody ab131021

★ ★ ★ ★ ★ [1 Abreviews](#) [4 References](#) [4 图像](#)

#### 概述

产品名称	Anti-PKM抗体
描述	兔多克隆抗体to PKM
宿主	Rabbit
经测试应用	适用于: WB, IP, IHC-P
种属反应性	与反应: Human 预测可用于: Chimpanzee, Rhesus monkey, Gorilla, Orangutan 
免疫原	Synthetic peptide corresponding to Human PKM aa 1-50. Database link: <a href="#">NP_002645.3</a>
阳性对照	HeLa, 293T and Jurkat whole cell lysate ( <a href="#">ab7899</a> ).
常规说明	<p>The Life Science industry has been in the grips of a reproducibility crisis for a number of years. Abcam is leading the way in addressing this with our range of recombinant monoclonal antibodies and knockout edited cell lines for gold-standard validation. Please check that this product meets your needs before purchasing.</p> <p>If you have any questions, special requirements or concerns, please send us an inquiry and/or contact our Support team ahead of purchase. Recommended alternatives for this product can be found below, along with publications, customer reviews and Q&amp;As</p>

#### 性能

形式	Liquid
存放说明	Shipped at 4°C. Store at +4°C.
存储溶液	pH: 7 Preservative: 0.09% Sodium azide Constituent: 99% Tris citrate/phosphate  pH 7 to 8
纯度	Immunogen affinity purified
纯化说明	ab131021 is affinity purified using an epitope specific to PKM2 immobilized on solid support.
克隆	多克隆
同种型	IgG

应用

**The Abpromise guarantee**      **Abpromise™**承诺保证使用ab131021于以下的经测试应用

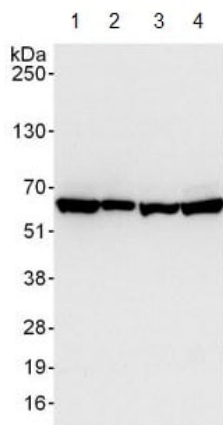
“应用说明”部分 下显示的仅为推荐的起始稀释度;实际最佳的稀释度/浓度应由使用者检定。

应用	Ab评论	说明
WB	★ ★ ★ ★ ★ (1)	1/2000 - 1/10000. Predicted molecular weight: 58 kDa.
IP		Use at 2-10 µg/mg of lysate.
IHC-P		1/500 - 1/2000. Perform heat mediated antigen retrieval with citrate buffer pH 6 before commencing with IHC staining protocol.

靶标

功能	Glycolytic enzyme that catalyzes the transfer of a phosphoryl group from phosphoenolpyruvate (PEP) to ADP, generating ATP. Stimulates POU5F1-mediated transcriptional activation. Plays a general role in caspase independent cell death of tumor cells. The ratio between the highly active tetrameric form and nearly inactive dimeric form determines whether glucose carbons are channeled to biosynthetic processes or used for glycolytic ATP production. The transition between the 2 forms contributes to the control of glycolysis and is important for tumor cell proliferation and survival.
组织特异性	Specifically expressed in proliferating cells, such as embryonic stem cells, embryonic carcinoma cells, as well as cancer cells.
通路	Carbohydrate degradation; glycolysis; pyruvate from D-glyceraldehyde 3-phosphate: step 5/5.
序列相似性	Belongs to the pyruvate kinase family.
翻译后修饰	ISGylated. Under hypoxia, hydroxylated by EGLN3. Acetylation at Lys-305 is stimulated by high glucose concentration, it decreases enzyme activity and promotes its lysosomal-dependent degradation via chaperone-mediated autophagy. FGFR1-dependent tyrosine phosphorylation is reduced by interaction with TRIM35.
细胞定位	Cytoplasm. Nucleus. Translocates to the nucleus in response to different apoptotic stimuli. Nuclear translocation is sufficient to induce cell death that is caspase independent, isoform-specific and independent of its enzymatic activity.

图片



Western blot - Anti-PKM antibody (ab131021)

**All lanes :** Anti-PKM antibody (ab131021) at 0.1 µg/ml

**Lane 1 :** HeLa whole cell lysate at 50 µg

**Lane 2 :** HeLa whole cell lysate at 15 µg

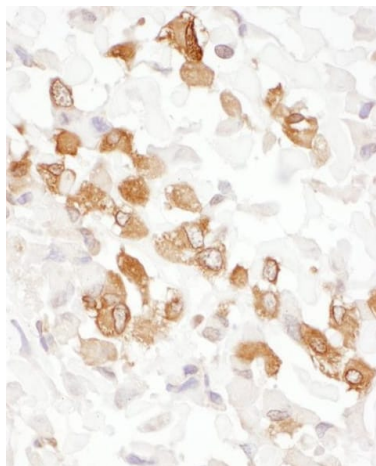
**Lane 3 :** 293T whole cell lysate at 50 µg

**Lane 4 :** Jurkat whole cell lysate at 50 µg

Developed using the ECL technique.

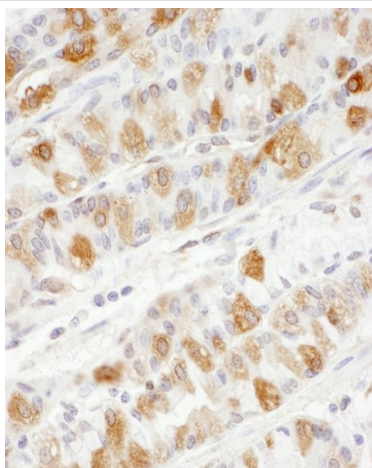
**Predicted band size:** 58 kDa

**Exposure time:** 3 seconds



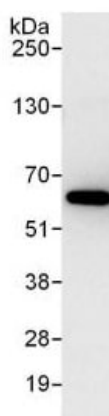
Immunohistochemistry (Formalin/PFA-fixed paraffin-embedded sections) - Anti-PKM antibody (ab131021)

Immunohistochemistry (Formalin/PFA-fixed paraffin-embedded sections) analysis of human osteosarcoma tissue labelling PKM with ab131021 at 1/1000 (1µg/ml). Detection: DAB.



Immunohistochemistry (Formalin/PFA-fixed paraffin-embedded sections) analysis of human stomach tissue labelling PKM with ab131021 at 1/1000 (1µg/ml). Detection: DAB.

Immunohistochemistry (Formalin/PFA-fixed paraffin-embedded sections) - Anti-PKM antibody (ab131021)



Detection of PKM2 by Western Blot of Immunoprecipitate.

ab131021 at 0.4µg/ml staining PKM in HeLa whole cell lysate immunoprecipitated using ab131021 at 6µg/mg lysate (1 mg/IP; 20% of IP loaded/lane).

Detection: Chemiluminescence with exposure time of 3 seconds.

Immunoprecipitation - Anti-PKM antibody (ab131021)

**Please note:** All products are "FOR RESEARCH USE ONLY. NOT FOR USE IN DIAGNOSTIC PROCEDURES"

**Our Abpromise to you: Quality guaranteed and expert technical support**

- Replacement or refund for products not performing as stated on the datasheet

- Valid for 12 months from date of delivery
- Response to your inquiry within 24 hours
- We provide support in Chinese, English, French, German, Japanese and Spanish
- Extensive multi-media technical resources to help you
- We investigate all quality concerns to ensure our products perform to the highest standards

If the product does not perform as described on this datasheet, we will offer a refund or replacement. For full details of the Abpromise, please visit <https://www.abcam.cn/abpromise> or contact our technical team.

## **Terms and conditions**

---

- Guarantee only valid for products bought direct from Abcam or one of our authorized distributors