

Anti-PKC mu/PKD antibody ab131460

2 图像

概述

产品名称	Anti-PKC mu/PKD抗体
描述	兔多克隆抗体to PKC mu/PKD
宿主	Rabbit
经测试应用	适用于: WB, ICC/IF
种属反应性	与反应: Human
免疫原	Synthetic peptide corresponding to Human PKC mu/PKD aa 736-740 conjugated to keyhole limpet haemocyanin. Database link: NP_002733.2
阳性对照	Jurkat cytoplasmic extract lysate (ab14842) can be used as a positive control in WB. HeLa cells; HeLa, 293, THP1 and JK cell extracts.
常规说明	<p>The Life Science industry has been in the grips of a reproducibility crisis for a number of years. Abcam is leading the way in addressing this with our range of recombinant monoclonal antibodies and knockout edited cell lines for gold-standard validation. Please check that this product meets your needs before purchasing.</p> <p>If you have any questions, special requirements or concerns, please send us an inquiry and/or contact our Support team ahead of purchase. Recommended alternatives for this product can be found below, along with publications, customer reviews and Q&As</p>

性能

形式	Liquid
存放说明	Shipped at 4°C. Store at -20°C. Stable for 12 months at -20°C.
存储溶液	pH: 7.40 Preservative: 0.02% Sodium azide Constituents: 49% PBS, 0.88% Sodium chloride, 50% Glycerol (glycerin, glycerine) PBS without Mg ²⁺ and Ca ²⁺ .
纯度	Immunogen affinity purified
纯化说明	ab131460 was purified by affinity chromatography using epitope specific peptide.
克隆	多克隆
同种型	IgG

应用

The Abpromise guarantee **Abpromise™** 承诺保证使用 ab131460 于以下的经测试应用

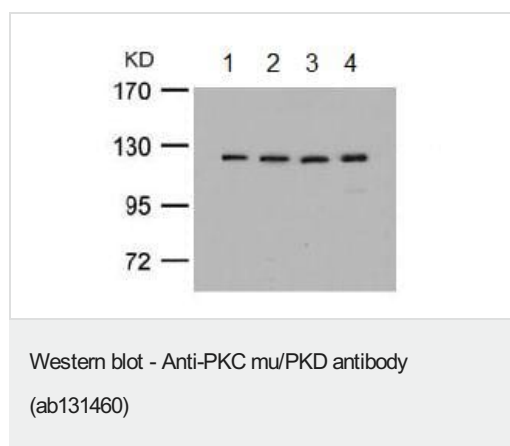
“应用说明”部分 下显示的仅为推荐的起始稀释度;实际最佳的稀释度/浓度应由使用者检定。

应用	Ab评论	说明
WB		1/500 - 1/1000. Detects a band of approximately 115 kDa (predicted molecular weight: 102 kDa).
ICC/IF		1/100 - 1/200.

靶标

功能	Converts transient diacylglycerol (DAG) signals into prolonged physiological effects, downstream of PKC. Involved in resistance to oxidative stress through activation of NF-kappa-B.
序列相似性	Belongs to the protein kinase superfamily. CAMK Ser/Thr protein kinase family. PKD subfamily. Contains 1 PH domain. Contains 2 phorbol-ester/DAG-type zinc fingers. Contains 1 protein kinase domain.
细胞定位	Cytoplasm. Membrane. Translocation to the cell membrane is required for kinase activation.

图片



All lanes : Anti-PKC mu/PKD antibody (ab131460) at 1/500 dilution

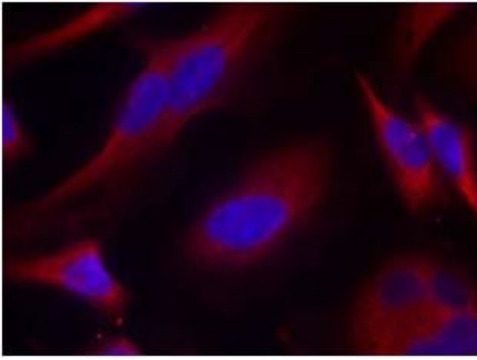
Lane 1 : HeLa cell extract

Lane 2 : 293 cell extract

Lane 3 : THP1 cell extract

Lane 4 : Jurkat cell extract

Predicted band size: 102 kDa



Immunocytochemistry/ Immunofluorescence analysis of methanol-fixed HeLa cells labelling PKC mu/PKD with ab131460 at 1/100 dilution.

Immunocytochemistry/ Immunofluorescence - Anti-PKC mu/PKD antibody (ab131460)

Please note: All products are "FOR RESEARCH USE ONLY. NOT FOR USE IN DIAGNOSTIC PROCEDURES"

Our Abpromise to you: Quality guaranteed and expert technical support

- Replacement or refund for products not performing as stated on the datasheet
- Valid for 12 months from date of delivery
- Response to your inquiry within 24 hours
- We provide support in Chinese, English, French, German, Japanese and Spanish
- Extensive multi-media technical resources to help you
- We investigate all quality concerns to ensure our products perform to the highest standards

If the product does not perform as described on this datasheet, we will offer a refund or replacement. For full details of the Abpromise, please visit <https://www.abcam.cn/abpromise> or contact our technical team.

Terms and conditions

- Guarantee only valid for products bought direct from Abcam or one of our authorized distributors