

# Anti-PKC alpha + beta 2 + gamma antibody [EPR18104] ab184746

**重组 RabMAb**

## 1 References 15 图像

### 概述

产品名称	Anti-PKC alpha + beta 2 + gamma抗体[EPR18104]
描述	兔单克隆抗体[EPR18104] to PKC alpha + beta 2 + gamma
宿主	Rabbit
经测试应用	适用于: Flow Cyt (Intra), WB, IHC-P, ICC/IF
种属反应性	与反应: Mouse, Rat, Human
免疫原	Recombinant fragment. This information is proprietary to Abcam and/or its suppliers.
阳性对照	WB: Active human PKC alpha, PKC gamma and PKC beta 2 full length proteins; Human fetal brain lysate; HeLa, Jurkat, K562, C6, RAW 264.7, PC-12 and NIH/3T3 whole cell lysates; Mouse and rat brain lysates. IHC-P: Human cerebral cortex, Human pancreas, Cervical cancer, Mouse kidney and Rat kidney tissues. ICC/IF: SH-SY5Y and HeLa cells. Flow Cyt (intra): HeLa cells.
常规说明	<p>This product is a recombinant monoclonal antibody, which offers several advantages including:</p> <ul style="list-style-type: none"><li>- High batch-to-batch consistency and reproducibility</li><li>- Improved sensitivity and specificity</li><li>- Long-term security of supply</li><li>- Animal-free production</li></ul> <p>For more information <a href="#">see here</a>.</p> <p>Our RabMAb<sup>®</sup> technology is a patented hybridoma-based technology for making rabbit monoclonal antibodies. For details on our patents, please refer to <a href="#">RabMAb<sup>®</sup> patents</a>.</p>

### 性能

形式	Liquid
存放说明	Shipped at 4°C. Store at +4°C short term (1-2 weeks). Upon delivery aliquot. Store at -20°C long term. Avoid freeze / thaw cycle.
存储溶液	pH: 7.2 Preservative: 0.01% Sodium azide Constituents: 59% PBS, 40% Glycerol (glycerin, glycerine), 0.05% BSA
纯度	Protein A purified

克隆 单克隆  
 克隆编号 EPR18104  
 同种型 IgG

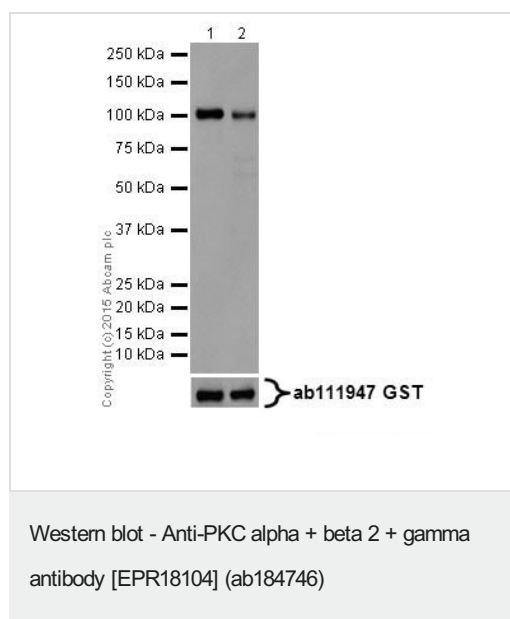
## 应用

**The Abpromise guarantee** **Abpromise™**承诺保证使用ab184746于以下的经测试应用

“应用说明”部分 下显示的仅为推荐的起始稀释度;实际最佳的稀释度/浓度应由使用者检定。

应用	Ab评论	说明
Flow Cyt (Intra)		1/60.
WB		1/1000. Detects a band of approximately 78 kDa (predicted molecular weight: 77, 78 kDa).
IHC-P		1/400. Perform heat mediated antigen retrieval with Tris/EDTA buffer pH 9.0 before commencing with IHC staining protocol.
ICC/IF		1/100.

## 图片



**All lanes** : Anti-PKC alpha + beta 2 + gamma antibody [EPR18104] (ab184746) at 1/1000 dilution

**Lane 1** : Active human PKC alpha full length protein

**Lane 2** : Active human PKC gamma full length protein

Lysates/proteins at 0.02 µg per lane.

### Secondary

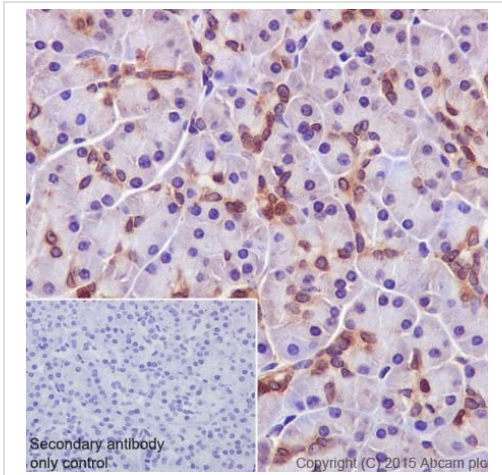
**All lanes** : Goat Anti-Rabbit IgG H&L (HRP) ([ab97051](#)) at 1/50000 dilution

**Predicted band size:** 77, 78 kDa

**Exposure time:** 1 second

Blocking/Dilution buffer: 5% NFDm/TBST.

Active human PKC alpha full length protein (Catalog#[ab55672](#)) contains aa1-672 with GST-tag; Active human PKC gamma full length protein (Catalog#[ab60842](#)) contains aa1-677 with GST-tag.



Immunohistochemistry (Formalin/PFA-fixed paraffin-embedded sections) - Anti-PKC alpha + beta 2 + gamma antibody [EPR18104] (ab184746)

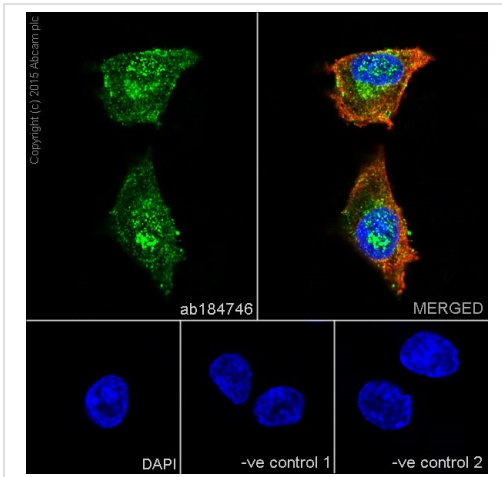
Immunohistochemical analysis of paraffin-embedded human pancreas tissue labeling PKC gamma with ab184746 at 1/400 dilution, followed by Goat Anti-Rabbit IgG H&L (HRP) (**ab97051**) at 1/500 dilution.

Nucleus and weak cytoplasmic staining on Human pancreatic acinar cells is observed.

Counter stained with Hematoxylin.

Secondary antibody only control: Used PBS instead of primary antibody, secondary antibody is **ab97051** at 1/500 dilution.

Perform heat mediated antigen retrieval with Tris/EDTA buffer pH 9.0 before commencing with IHC staining protocol.



Immunocytochemistry/ Immunofluorescence - Anti-PKC alpha + beta 2 + gamma antibody [EPR18104] (ab184746)

Immunofluorescent analysis of 4% paraformaldehyde-fixed, 0.1% Triton X-100 permeabilized SH-SY5Y (Human neuroblastoma cell line from bone marrow) cells labeling PKC gamma with ab184746 at 1/100 dilution, followed by Goat anti-rabbit IgG (Alexa Fluor® 488) (**ab150077**) secondary antibody at 1/1000 dilution (green).

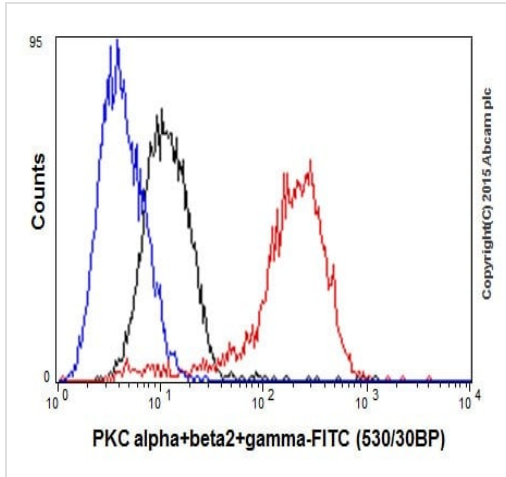
Confocal image showing cytoplasmic and nuclear staining on SH-SY5Y cell line.

The nuclear counterstain is DAPI (blue). Tubulin is detected with **ab7291** (anti-Tubulin mouse mAb) at 1/1000 dilution and **ab150120** (AlexaFluor®594 Goat anti-Mouse secondary) at 1/1000 dilution (red).

The negative controls are as follows:-

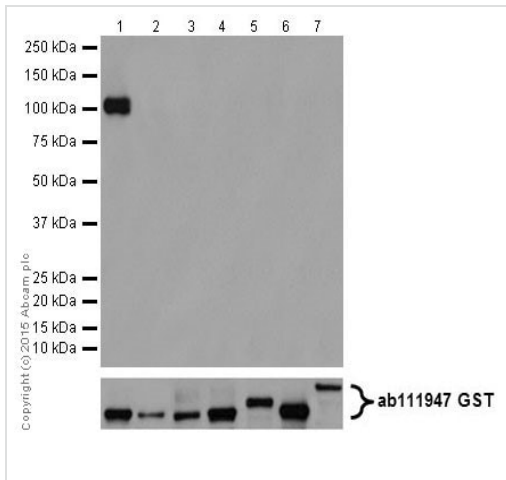
-ve control 1: ab184746 at 1/100 dilution followed by **ab150120** (AlexaFluor®594 Goat anti-Mouse secondary) at 1/1000 dilution.

-ve control 2: **ab7291** (anti-Tubulin mouse mAb) at 1/1000 dilution followed by **ab150077** (Alexa Fluor®488 Goat Anti-Rabbit IgG H&L) at 1/1000 dilution.



Flow Cytometry (Intracellular) - Anti-PKC alpha + beta 2 + gamma antibody [EPR18104] (ab184746)

Intracellular flow cytometric analysis of 4% paraformaldehyde-fixed HeLa (Human epithelial cell line from cervix adenocarcinoma) cells labeling PKC gamma with ab184746 at 1/60 dilution (red) compared with a rabbit monoclonal IgG isotype control ([ab172730](#); black) and an unlabelled control (cells without incubation with primary antibody and secondary antibody; blue). Goat anti rabbit IgG (FITC) at 1/500 dilution was used as the secondary antibody.



Western blot - Anti-PKC alpha + beta 2 + gamma antibody [EPR18104] (ab184746)

**All lanes** : Anti-PKC alpha + beta 2 + gamma antibody [EPR18104] (ab184746) at 1/1000 dilution

**Lane 1** : Active human PKC beta 2 full length protein

**Lane 2** : Active human PKC beta 1 full length protein

**Lane 3** : Active human PKC delta full length protein

**Lane 4** : Active human PKC eta full length protein

**Lane 5** : Active human PKC epsilon full length protein

**Lane 6** : Active human PKC theta full length protein

**Lane 7** : Active human PKC mu full length protein

Lysates/proteins at 0.02 µg per lane.

#### Secondary

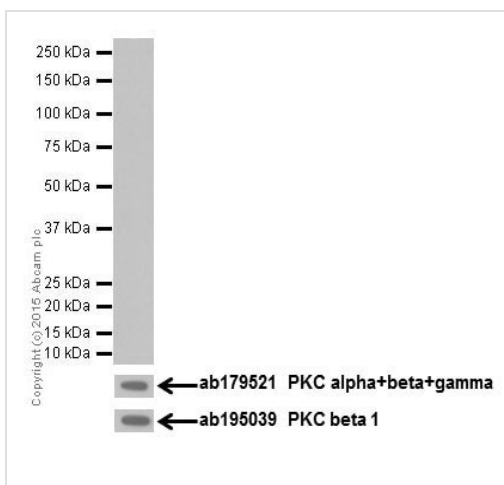
**All lanes** : Goat Anti-Rabbit IgG H&L (HRP) ([ab97051](#)) at 1/50000 dilution

**Predicted band size:** 77, 78 kDa

**Exposure time:** 3 minutes

Blocking/Dilution buffer: 5% NFDM/TBST.

Active human PKC beta 1 full length protein(Catalog#[ab60840](#)) contains aa1-671 with GST-tag; Active human PKC beta 2 full length protein(Catalog#[ab60841](#)) contains aa1-673 with GST-tag; Active human PKC delta full length protein(Catalog#[ab60844](#)) contains aa1-676 with GST-tag; Active human PKC eta full length protein(Catalog#[ab60849](#)) contains aa1-683 with GST-tag; Active human PKC epsilon full length protein(Catalog#[ab60847](#)) contains aa1-737 with GST-tag; Active human PKC theta full length protein(Catalog#[ab56641](#)) contains aa1-706 with GST-tag; Active human PKC mu full length protein(Catalog#[ab60873](#)) contains aa1-912 with GST-tag.



Western blot - Anti-PKC alpha + beta 2 + gamma antibody [EPR18104] (ab184746)

Anti-PKC alpha + beta 2 + gamma antibody [EPR18104] (ab184746) at 1/1000 dilution + Active human PKC beta 1 full length protein at 0.02 µg

#### Secondary

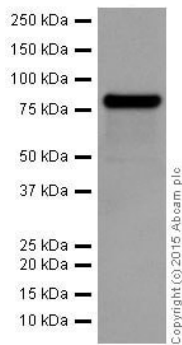
Goat Anti-Rabbit IgG H&L (HRP) ([ab97051](#)) at 1/50000 dilution

**Predicted band size:** 77, 78 kDa

**Exposure time:** 3 minutes

Blocking/Dilution buffer: 5% NFDM/TBST.

Active human PKC beta 1 full length protein (Catalog #[ab60840](#)) contains aa1-671 with GST-tag.



Western blot - Anti-PKC alpha + beta 2 + gamma antibody [EPR18104] (ab184746)

Anti-PKC alpha + beta 2 + gamma antibody [EPR18104] (ab184746) at 1/1000 dilution + Human fetal brain lysate at 10 µg

**Secondary**

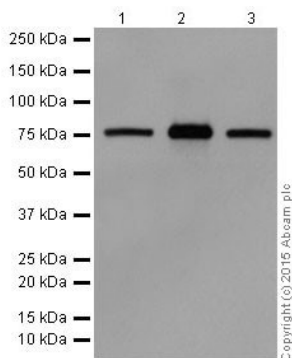
Anti-Rabbit IgG (HRP), specific to the non-reduced form of IgG at 1/10000 dilution

**Predicted band size:** 77, 78 kDa

**Observed band size:** 78 kDa

**Exposure time:** 1 second

Blocking/Dilution buffer: 5% NFD/MTBST.



Western blot - Anti-PKC alpha + beta 2 + gamma antibody [EPR18104] (ab184746)

**All lanes :** Anti-PKC alpha + beta 2 + gamma antibody [EPR18104] (ab184746) at 1/1000 dilution

**Lane 1 :** HeLa (Human epithelial cell line from cervix adenocarcinoma) whole cell lysate

**Lane 2 :** Jurkat (Human T cell leukemia cell line from peripheral blood) whole cell lysate

**Lane 3 :** K562 (Human chronic myelogenous leukemia cell line from bone marrow) whole cell lysate

Lysates/proteins at 10 µg per lane.

**Secondary**

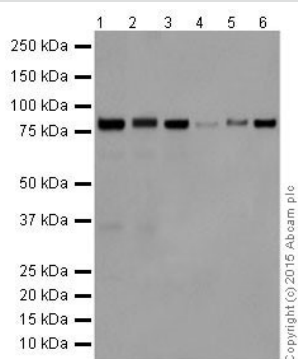
**All lanes :** Goat Anti-Rabbit IgG H&L (HRP) (**ab97051**) at 1/10000 dilution

**Predicted band size:** 77, 78 kDa

**Observed band size:** 78 kDa

**Exposure time:** 2 seconds

Blocking/Dilution buffer: 5% NFD/MTBST.



Western blot - Anti-PKC alpha + beta 2 + gamma antibody [EPR18104] (ab184746)

**All lanes** : Anti-PKC alpha + beta 2 + gamma antibody [EPR18104] (ab184746) at 1/1000 dilution

**Lane 1** : Mouse brain lysate

**Lane 2** : Rat brain lysate

**Lane 3** : C6 (Rat gliial tumor cell line) whole cell lysate

**Lane 4** : RAW 264.7 (Mouse macrophage cell line transformed with Abelson murine leukemia virus) whole cell lysate

**Lane 5** : PC-12 (Rat adrenal gland pheochromocytoma cell line) whole cell lysate

**Lane 6** : NIH/3T3 (Mouse embryonic fibroblast cell line) whole cell lysate

Lysates/proteins at 10 µg per lane.

### Secondary

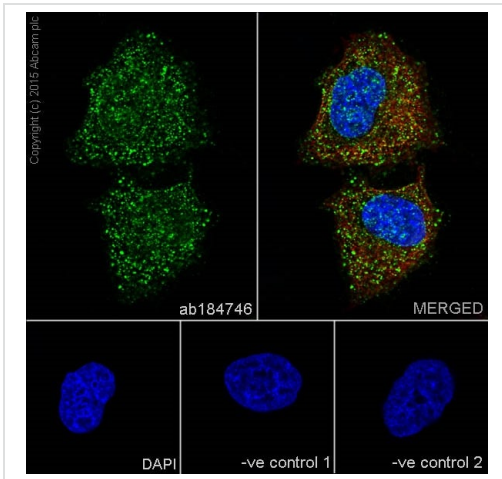
**All lanes** : Goat Anti-Rabbit IgG H&L (HRP) ([ab97051](#)) at 1/10000 dilution

**Predicted band size:** 77, 78 kDa

**Observed band size:** 78 kDa

**Exposure time:** 1 second

Blocking/Dilution buffer: 5% NFDm/TBST.



Immunocytochemistry/ Immunofluorescence - Anti-PKC alpha + beta 2 + gamma antibody [EPR18104] (ab184746)

Immunofluorescent analysis of 4% paraformaldehyde-fixed, 0.1% Triton X-100 permeabilized HeLa (Human epithelial cell line from cervix adenocarcinoma) cells labeling PKC gamma with ab184746 at 1/100 dilution, followed by Goat anti-rabbit IgG (Alexa Fluor® 488) (**ab150077**) secondary antibody at 1/1000 dilution (green).

Confocal image showing cytoplasmic and nuclear staining on HeLa cell line.

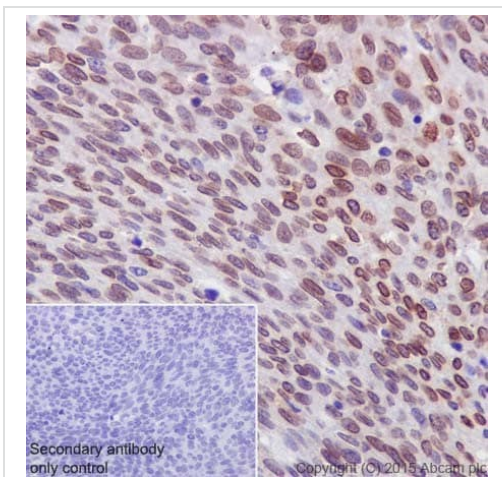
The nuclear counterstain is DAPI (blue).

Tubulin is detected with **ab7291** (anti-Tubulin mouse mAb) at 1/1000 dilution and **ab150120** (AlexaFluor®594 Goat anti-Mouse secondary) at 1/1000 dilution (red).

The negative controls are as follows:-

-ve control 1: ab184746 at 1/100 dilution followed by **ab150120** (AlexaFluor®594 Goat anti-Mouse secondary) at 1/1000 dilution.

-ve control 2: **ab7291** (anti-Tubulin mouse mAb) at 1/1000 dilution followed by **ab150077** (Alexa Fluor®488 Goat Anti-Rabbit IgG H&L) at 1/1000 dilution.



Immunohistochemistry (Formalin/PFA-fixed paraffin-embedded sections) - Anti-PKC alpha + beta 2 + gamma antibody [EPR18104] (ab184746)

Immunohistochemical analysis of paraffin-embedded cervical cancer tissue labeling PKC gamma with ab184746 at 1/400 dilution, followed by Goat Anti-Rabbit IgG H&L (HRP) (**ab97051**) at 1/500 dilution.

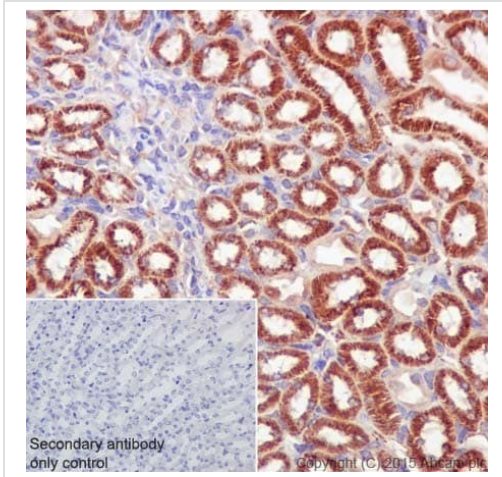
Nucleus and weak cytoplasmic staining on cancer cells of cervix cancer is observed.

Counter stained with Hematoxylin.

Secondary antibody only control: Used PBS instead of primary antibody, secondary antibody is **ab97051** at 1/500 dilution.

Perform heat mediated antigen retrieval with Tris/EDTA buffer pH 9.0 before commencing with IHC staining protocol.





Immunohistochemistry (Formalin/PFA-fixed paraffin-embedded sections) - Anti-PKC alpha + beta 2 + gamma antibody [EPR18104] (ab184746)

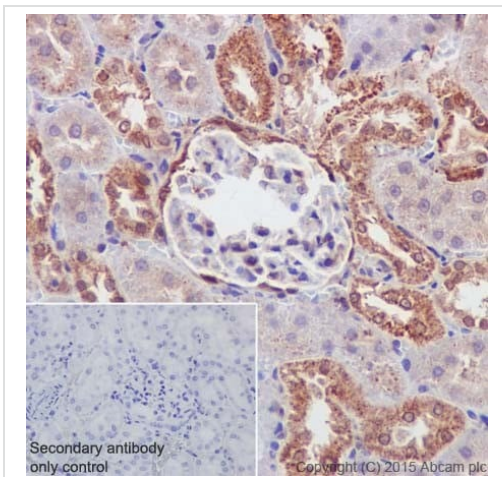
Immunohistochemical analysis of paraffin-embedded mouse kidney tissue labeling PKC gamma with ab184746 at 1/400 dilution, followed by Goat Anti-Rabbit IgG H&L (HRP) ([ab97051](#)) at 1/500 dilution.

Cytoplasmic staining on epithelial cells of mouse kidney is observed.

Counter stained with Hematoxylin.

Secondary antibody only control: Used PBS instead of primary antibody, secondary antibody is [ab97051](#) at 1/500 dilution.

Perform heat mediated antigen retrieval with Tris/EDTA buffer pH 9.0 before commencing with IHC staining protocol.



Immunohistochemistry (Formalin/PFA-fixed paraffin-embedded sections) - Anti-PKC alpha + beta 2 + gamma antibody [EPR18104] (ab184746)

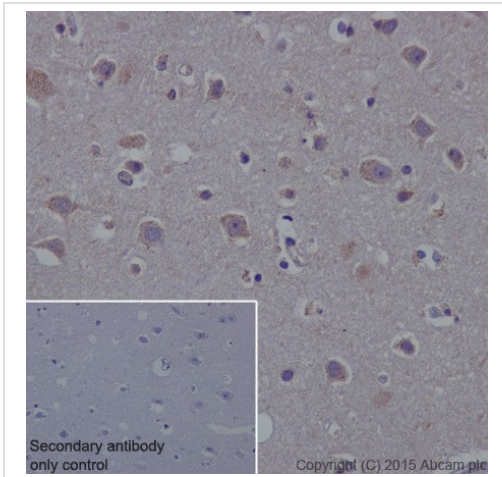
Immunohistochemical analysis of paraffin-embedded rat kidney tissue labeling PKC gamma with ab184746 at 1/400 dilution, followed by Goat Anti-Rabbit IgG H&L (HRP) ([ab97051](#)) at 1/500 dilution.

Nucleus and cytoplasmic staining on epithelial cells of rat kidney is observed.

Counter stained with Hematoxylin.

Secondary antibody only control: Used PBS instead of primary antibody, secondary antibody is [ab97051](#) at 1/500 dilution.

Perform heat mediated antigen retrieval with Tris/EDTA buffer pH 9.0 before commencing with IHC staining protocol.



Immunohistochemical analysis of paraffin-embedded human cerebral cortex tissue labeling PKC gamma with ab184746 at 1/400 dilution, followed by Goat Anti-Rabbit IgG H&L (HRP) ([ab97051](#)) at 1/500 dilution.

Weak cytoplasmic staining on neuron of Human cerebral cortex is observed.





Counter stained with Hematoxylin.

Secondary antibody only control: Used PBS instead of primary antibody, secondary antibody is Goat Anti-Rabbit IgG H&L (HRP) ([ab97051](#)) at 1/500 dilution.

Perform heat mediated antigen retrieval with Tris/EDTA buffer pH 9.0 before commencing with IHC staining protocol.

Immunohistochemistry (Formalin/PFA-fixed paraffin-embedded sections) - Anti-PKC alpha + beta 2 + gamma antibody [EPR18104] (ab184746)

Why choose a recombinant antibody?

 <p><b>Research with confidence</b> Consistent and reproducible results</p>	 <p><b>Long-term and scalable supply</b> Recombinant technology</p>
 <p><b>Success from the first experiment</b> Confirmed specificity</p>	 <p><b>Ethical standards compliant</b> Animal-free production</p>

Anti-PKC alpha + beta 2 + gamma antibody [EPR18104] (ab184746)

**Please note:** All products are "FOR RESEARCH USE ONLY. NOT FOR USE IN DIAGNOSTIC PROCEDURES"

### Our Abpromise to you: Quality guaranteed and expert technical support

- Replacement or refund for products not performing as stated on the datasheet
- Valid for 12 months from date of delivery
- Response to your inquiry within 24 hours
- We provide support in Chinese, English, French, German, Japanese and Spanish
- Extensive multi-media technical resources to help you

- We investigate all quality concerns to ensure our products perform to the highest standards

If the product does not perform as described on this datasheet, we will offer a refund or replacement. For full details of the Abpromise, please visit <https://www.abcam.cn/abpromise> or contact our technical team.

### **Terms and conditions**

---

- Guarantee only valid for products bought direct from Abcam or one of our authorized distributors