


Anti-PKA R2/PKR2 antibody [Y116] ab32514

敲除验证
重组
RabMAb

★☆☆☆☆
[1 Abreviews](#)
[8 References](#)
[7 图像](#)

概述

产品名称	Anti-PKA R2/PKR2抗体[Y116]
描述	兔单克隆抗体[Y116] to PKA R2/PKR2
宿主	Rabbit
特异性	The antibody recognises PKA RII. It does not cross-react with other cAMP-dependent kinase.
经测试应用	适用于: Flow Cyt (Intra), IP, WB, IHC-P, ICC/IF
种属反应性	与反应: Human 预测可用于: Cow 
免疫原	Synthetic peptide within Human PKA R2/PKR2 aa 350-450 (C terminal). The exact sequence is proprietary.
阳性对照	WB: K562, HeLa and Jurkat cell lysates. IHC-P: Human colon cancer tissue. IP: K562 whole cell lysate. Flow Cyt (intra): MCF7 cells. ICC/IF: HeLa cells.
常规说明	<p>This product is a recombinant monoclonal antibody, which offers several advantages including:</p> <ul style="list-style-type: none"> - High batch-to-batch consistency and reproducibility - Improved sensitivity and specificity - Long-term security of supply - Animal-free production <p>For more information see here.</p> <p>Our RabMAb[®] technology is a patented hybridoma-based technology for making rabbit monoclonal antibodies. For details on our patents, please refer to RabMAb[®] patents.</p> <p>Mouse, Rat: We have preliminary internal testing data to indicate this antibody may not react with these species. Please contact us for more information.</p>

性能

形式	Liquid
存放说明	Shipped at 4°C. Store at +4°C short term (1-2 weeks). Upon delivery aliquot. Store at -20°C long term. Avoid freeze / thaw cycle.
存储溶液	pH: 7.20 Preservative: 0.01% Sodium azide

纯度	Constituents: 59% PBS, 40% Glycerol (glycerin, glycerine), 0.05% BSA
克隆	Protein A purified
克隆编号	单克隆
同种型	Y116
	IgG

应用

The Abpromise guarantee **Abpromise™**承诺保证使用ab32514于以下的经测试应用

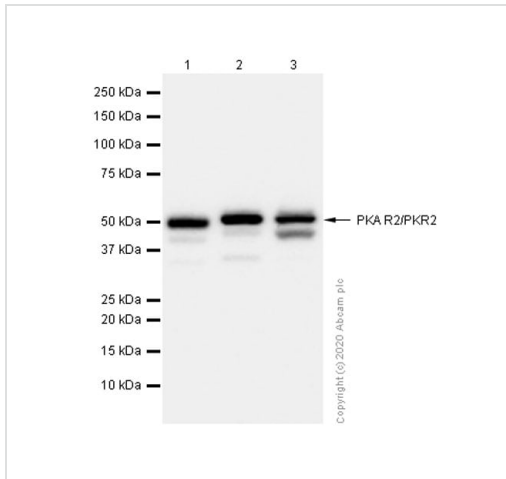
“应用说明”部分下显示的仅为推荐的起始稀释度;实际最佳的稀释度/浓度应由使用者检定。

应用	Ab评论	说明
Flow Cyt (Intra)		1/20.
IP		1/20.
WB	★☆☆☆☆ (1)	1/10000. Detects a band of approximately 52 kDa (predicted molecular weight: 45 kDa). For unpurified use at 1/10000 - 1/50000.
IHC-P		1/100. Perform heat mediated antigen retrieval with citrate buffer pH 6 before commencing with IHC staining protocol. See IHC antigen retrieval protocols . For unpurified use at 1/100 - 1/250.
ICC/IF		1/500. For unpurified use at 1/100 - 1/250.

靶标

功能	Regulatory subunit of the cAMP-dependent protein kinases involved in cAMP signaling in cells. Type II regulatory chains mediate membrane association by binding to anchoring proteins, including the MAP2 kinase.
组织特异性	Four types of regulatory chains are found: I-alpha, I-beta, II-alpha, and II-beta. Their expression varies among tissues and is in some cases constitutive and in others inducible.
序列相似性	Belongs to the cAMP-dependent kinase regulatory chain family. Contains 2 cyclic nucleotide-binding domains.
翻译后修饰	Phosphorylated by the activated catalytic chain.
细胞定位	Cytoplasm. Cell membrane. Colocalizes with PJA2 in the cytoplasm and the cell membrane.

图片



Western blot - Anti-PKA R2/PKR2 antibody [Y116] (ab32514)

All lanes : Anti-PKA R2/PKR2 antibody [Y116] (ab32514) at 1/10000 dilution (Purified)

Lane 1 : K-562 (Human chronic myelogenous leukemia lymphoblast) whole cell lysate

Lane 2 : HeLa (Human cervix adenocarcinoma epithelial cell) whole cell lysate

Lane 3 : Jurkat (Human T cell leukemia T lymphocyte) whole cell lysate

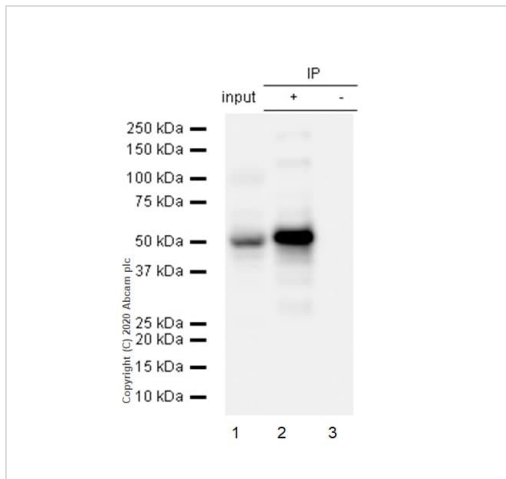
Lysates/proteins at 20 µg per lane.

Secondary

All lanes : Goat Anti-Rabbit IgG H&L (HRP) (**ab97051**) at 1/20000 dilution

Predicted band size: 45 kDa

Observed band size: 50 kDa



Immunoprecipitation - Anti-PKA R2/PKR2 antibody [Y116] (ab32514)

Purified ab32514 at 1/20 dilution (0.5µg) immunoprecipitating PKA R2/PKR2 in K-562 whole cell lysate.

Lane 1 (input): K-562 (Human chronic myelogenous leukemia lymphoblast) whole cell lysate 10µg

Lane 2 (+): ab32514 + K-562 whole cell lysate.

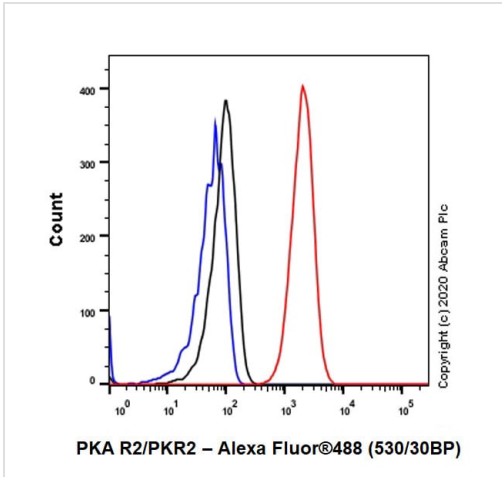
Lane 3 (-): Rabbit monoclonal IgG (**ab172730**) instead of ab32514 in K-562 whole cell lysate.

VeriBlot for IP Detection Reagent (HRP) (**ab131366**) (1/1000 dilution) was used for Western blotting.

Blocking Buffer and concentration: 5% NFDm/TBST.

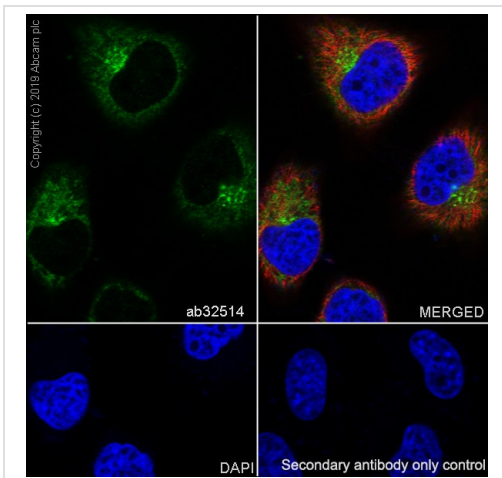
Diluting buffer and concentration: 5% NFDm/TBST.

Observed band size: 50 kDa



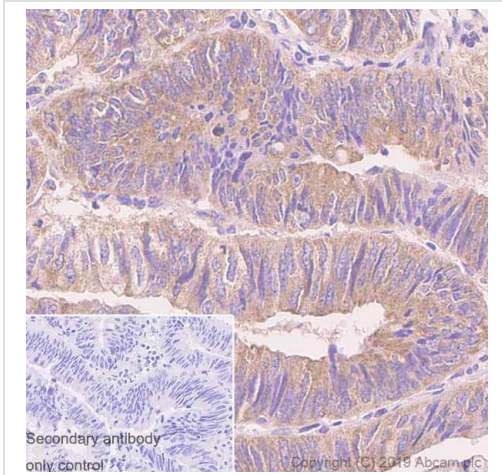
Flow Cytometry (Intracellular) - Anti-PA R2/PKR2 antibody [Y116] (ab32514)

Intracellular Flow Cytometry analysis of MCF7 (Human breast adenocarcinoma epithelial cell) cells labeling PKA R2/PKR2 with purified ab32514 at 1/20 dilution (10 µg/mL) (Red). Cells were fixed with 4% Paraformaldehyde and permeabilised with 90% Methanol. A Goat anti rabbit IgG (Alexa Fluor® 488, [ab150077](#)) secondary antibody was used at 1/2000. Isotype control - Rabbit monoclonal IgG (Black). Unlabeled control - Cell without incubation with primary antibody and secondary antibody (Blue).



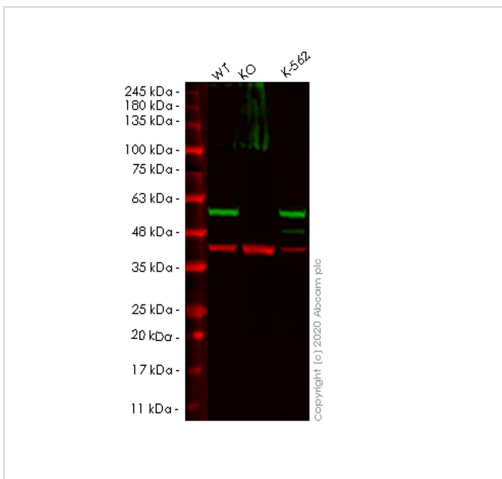
Immunocytochemistry/ Immunofluorescence - Anti-PA R2/PKR2 antibody [Y116] (ab32514)

Immunocytochemistry analysis of HeLa (Human cervix adenocarcinoma epithelial cell) cells labeling PKA R2/PKR2 with purified ab32514 at 1/500 dilution (1.9 µg/mL). Cells were fixed in 4% Paraformaldehyde and permeabilized with 0.1% tritonX-100. Cells were counterstained with Ab195889 Anti-alpha Tubulin antibody [DM1A] - Microtubule Marker (Alexa Fluor® 594) 1/200 (2.5 µg/mL). Goat anti rabbit IgG (Alexa Fluor® 488, [ab150077](#)) was used as the secondary antibody at 1/1000 (2 µg/mL) dilution. DAPI (blue) was used as nuclear counterstain. PBS instead of the primary antibody was used as the secondary antibody only control.



Immunohistochemistry (Formalin/PFA-fixed paraffin-embedded sections) - Anti-PKA R2/PKR2 antibody [Y116] (ab32514)

Immunohistochemistry (Formalin/PFA-fixed paraffin-embedded sections) analysis of human colon cancer tissue sections labeling PKA R2/PKR2 with purified ab32514 at 1/100 dilution (0.84 µg/mL). Heat mediated antigen retrieval using Bond™ Epitope Retrieval Solution 2 (pH 9.0). Rabbit specific IHC polymer detection kit HRP/DAB ([ab209101](#)) was used as the secondary antibody. Negative control: PBS instead of the primary antibody. Hematoxylin was used as a counterstain.



Western blot - Anti-PKA R2/PKR2 antibody [Y116] (ab32514)

All lanes : Anti-PKA R2/PKR2 antibody [Y116] (ab32514) at 1/1000 dilution

Lane 1 : Wild-type HeLa cell lysate

Lane 2 : PRKAR2A knockout HeLa cell lysate

Lane 3 : K-562 cell lysate

Lysates/proteins at 20 µg per lane.

Secondary

All lanes : Goat anti-Rabbit IgG H&L (IRDye® 800CW) preadsorbed ([ab216773](#)) at 1/10000 dilution

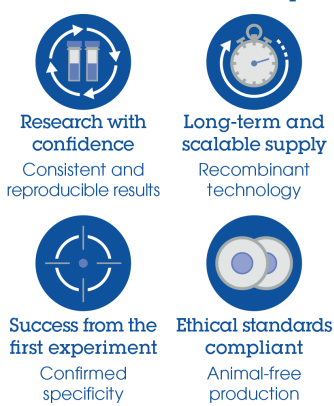
Predicted band size: 45 kDa

Observed band size: 50 kDa

Lanes 1-3: Merged signal (red and green). Green - ab32514 observed at 50 kDa. Red - loading control [ab8245](#) observed at 36 kDa.

Unpurified ab32514 Anti-PKA R2/PKR2 antibody [Y116] was shown to specifically react with PKA R2/PKR2 in wild-type HeLa cells. Loss of signal was observed when knockout cell line **ab265748** (knockout cell lysate **ab257607**) was used. Wild-type and PKA R2/PKR2 knockout samples were subjected to SDS-PAGE. ab32514 and Anti-GAPDH antibody [6C5] - Loading Control (**ab8245**) were incubated at room temperature for 2.5 hours at 1 in 1000 dilution and 1 in 20000 dilution respectively. Blots were developed with Goat anti-Rabbit IgG H&L (IRDye® 800CW) preadsorbed (**ab216773**) and Goat anti-Mouse IgG H&L (IRDye® 680RD) preadsorbed (**ab216776**) secondary antibodies at 1 in 20000 dilution for 1 hour at room temperature before imaging.

Why choose a recombinant antibody?



- Research with confidence**
Consistent and reproducible results
- Long-term and scalable supply**
Recombinant technology
- Success from the first experiment**
Confirmed specificity
- Ethical standards compliant**
Animal-free production

Anti-PKA R2/PKR2 antibody [Y116] (ab32514)

Please note: All products are "FOR RESEARCH USE ONLY. NOT FOR USE IN DIAGNOSTIC PROCEDURES"

Our Abpromise to you: Quality guaranteed and expert technical support

- Replacement or refund for products not performing as stated on the datasheet
- Valid for 12 months from date of delivery
- Response to your inquiry within 24 hours
- We provide support in Chinese, English, French, German, Japanese and Spanish
- Extensive multi-media technical resources to help you
- We investigate all quality concerns to ensure our products perform to the highest standards

If the product does not perform as described on this datasheet, we will offer a refund or replacement. For full details of the Abpromise, please visit <https://www.abcam.cn/abpromise> or contact our technical team.

Terms and conditions

- Guarantee only valid for products bought direct from Abcam or one of our authorized distributors