

Anti-Piwi antibody ab5207

[1 Abreviews](#) [8 References](#) [2 图像](#)

概述

产品名称	Anti-Piwi抗体
描述	兔多克隆抗体to Piwi
宿主	Rabbit
经测试应用	适用于: WB
种属反应性	与反应: Drosophila melanogaster
免疫原	Synthetic peptide. This information is proprietary to Abcam and/or its suppliers.
阳性对照	This antibody gave a positive signal in Drosophila embryo nuclear extract
常规说明	<p>The Life Science industry has been in the grips of a reproducibility crisis for a number of years. Abcam is leading the way in addressing this with our range of recombinant monoclonal antibodies and knockout edited cell lines for gold-standard validation. Please check that this product meets your needs before purchasing.</p> <p>If you have any questions, special requirements or concerns, please send us an inquiry and/or contact our Support team ahead of purchase. Recommended alternatives for this product can be found below, along with publications, customer reviews and Q&As</p>

性能

形式	Liquid
存放说明	Shipped at 4°C. Store at +4°C short term (1-2 weeks). Upon delivery aliquot. Store at -20°C or -80°C. Avoid freeze / thaw cycle.
存储溶液	pH: 7.40 Preservative: 0.02% Sodium azide Constituent: PBS
纯度	Immunogen affinity purified
克隆	多克隆
同种型	IgG

应用

The Abpromise guarantee **Abpromise™** 承诺保证使用 ab5207 于以下的经测试应用

“应用说明”部分 下显示的仅为推荐的起始稀释度;实际最佳的稀释度/浓度应由使用者检定。

应用	Ab评论	说明
WB		

应用说明

WB: 1/500. Detects a band of approximately 90 kDa (predicted molecular weight: 97 kDa). Can be blocked with **Piwi peptide (ab14803)**.

Not yet tested in other applications.

Optimal dilutions/concentrations should be determined by the end user.

靶标

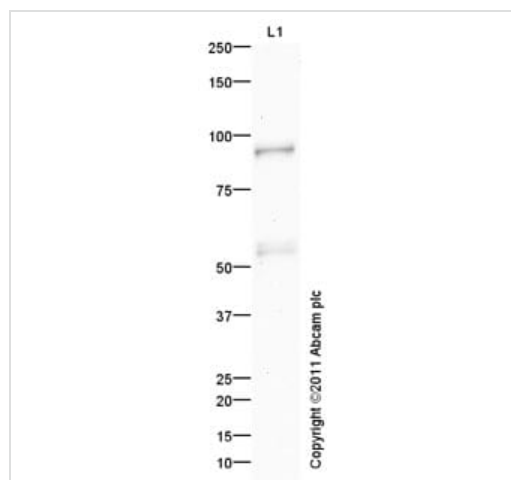
相关性

Piwi mediates a somatic signaling mechanism required for the maintenance of germline stem cells to produce and maintain a daughter germline stem cell. It is not essential for the further differentiation of the committed daughter cell. Acts cell autonomously to promote germline stem cell division. It is expressed somatically in the ovariole terminal filament and epithelial sheath cells. Expressed in the germarium at low levels during oogenesis stages 1-6, at a lower level during stages 7-9, strongly at stage 10 and eventually accumulating in early embryos.

细胞定位

Nuclear

图片



Western blot - Anti-Piwi antibody (ab5207)

Anti-Piwi antibody (ab5207) at 1 µg/ml + Drosophila embryo nuclear extract (from melanogaster embryos 0-12Hr) at 20 µg

Secondary

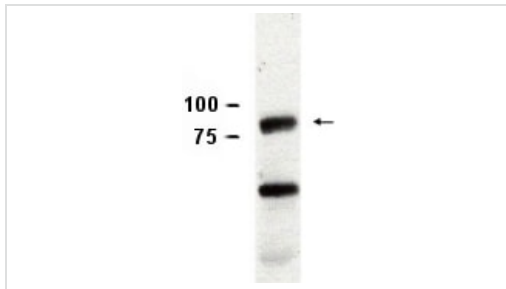
IRDye 680 Conjugated Goat Anti-Rabbit IgG (H+L) at 1/3000 dilution

Performed under reducing conditions.

Predicted band size: 97 kDa

Observed band size: 90 kDa

Additional bands at: 53 kDa. We are unsure as to the identity of these extra bands.



Western blot - Anti-Piwi antibody (ab5207)

This image is courtesy of Ahmet Denli

Drosophila embryo lysate, 8% TRIS SDS-PAGE.

The arrow indicates Piwi at a predicted MW of 90 kDa.

Pre-immune sera was used as a control and showed no equivalent band (data not shown).

Drosophila embryo lysate, 8% TRIS SDS-PAGE. The arrow indicates Piwi at a predicted MW of 90 kDa. Pre-immune sera was used as a control and showed no equivalent band (data not shown).

Ahmet Denli

Please note: All products are "FOR RESEARCH USE ONLY. NOT FOR USE IN DIAGNOSTIC PROCEDURES"

Our Abpromise to you: Quality guaranteed and expert technical support

- Replacement or refund for products not performing as stated on the datasheet
- Valid for 12 months from date of delivery
- Response to your inquiry within 24 hours
- We provide support in Chinese, English, French, German, Japanese and Spanish
- Extensive multi-media technical resources to help you
- We investigate all quality concerns to ensure our products perform to the highest standards

If the product does not perform as described on this datasheet, we will offer a refund or replacement. For full details of the Abpromise, please visit <https://www.abcam.cn/abpromise> or contact our technical team.

Terms and conditions

- Guarantee only valid for products bought direct from Abcam or one of our authorized distributors