

# Anti-PIM2 antibody [CHU61B] ab107102

[1 References](#) [1 图像](#)

### 概述

---

|       |   |
|-------|---|
| 产品名称  | Anti-PIM2抗体[CHU61B]   |
| 描述    | 大鼠单克隆抗体[CHU61B] to PIM2   |
| 宿主    | Rat   |
| 经测试应用 | 适用于: IHC-P  |
| 种属反应性 | 与反应: Human  |
| 免疫原   | Recombinant full length protein corresponding to PIM2.  |
| 阳性对照  | Human seminoma.   |
| 常规说明  | <p>The Life Science industry has been in the grips of a reproducibility crisis for a number of years. Abcam is leading the way in addressing this with our range of recombinant monoclonal antibodies and knockout edited cell lines for gold-standard validation. Please check that this product meets your needs before purchasing.</p> <p>If you have any questions, special requirements or concerns, please send us an inquiry and/or contact our Support team ahead of purchase. Recommended alternatives for this product can be found below, along with publications, customer reviews and Q&amp;As</p> |

### 性能

---

|      |  |
|------|--|
| 形式   | Liquid   |
| 存放说明 | Shipped at 4°C. Store at +4°C. Do Not Freeze.                            |
| 存储溶液 | pH: 7.4<br>Preservative: 0.05% Sodium azide<br>Constituents: PBS, 1% BSA |
| 纯度   | IgG fraction   |
| 克隆   | 单克隆  |
| 克隆编号 | CHU61B   |
| 同种型  | IgG2a  |

### 应用

---

The Abpromise guarantee

**Abpromise™** 承诺保证使用ab107102于以下的经测试应用

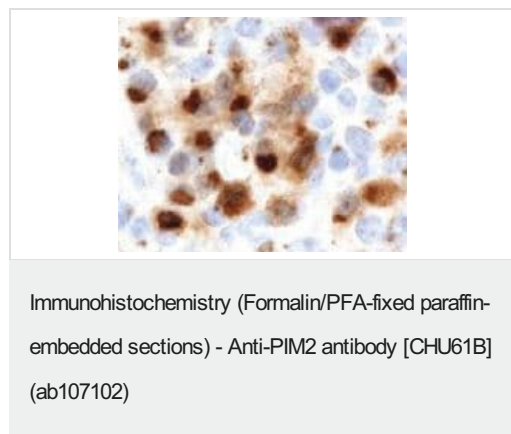
“应用说明”部分 下显示的仅为推荐的起始稀释度;实际最佳的稀释度/浓度应由使用者检定。

| 应用    | Ab评论 | 说明   |
|-------|------|------|
| IHC-P |      | 1/2. |

## 靶标

|              |  |
|--------------|--|
| <b>功能</b>    | Promotes cell survival in response to a variety of proliferative signals via positive regulation of the I-kappaB kinase/NF-kappaB cascade; this process requires phosphorylation of MAP3K8/COT. Prevents apoptosis induced by growth factor withdrawal via inhibition of caspase-3 activation, and via phosphorylation of pro-apoptotic proteins. Inhibits BAD-induced cell death via phosphorylation of BAD. PIM2-mediated cell survival is glucose-dependent but independent of several AKT regulators such as PI3K, HSP-90 and TOR, indicating that PIM2 and PI3K/AKT/TOR function via distinct pathways. Involved in the positive regulation of chondrocyte survival and autophagy in the epiphyseal growth plate. |
| <b>组织特异性</b> | Highly expressed in hematopoietic tissues, in leukemic and lymphoma cell lines, testis, small intestine, colon and colorectal adenocarcinoma cells. Weakly expressed in normal liver, but highly expressed in hepatocellular carcinoma tissues.  |
| <b>序列相似性</b> | Belongs to the protein kinase superfamily. CAMK Ser/Thr protein kinase family. PIM subfamily. Contains 1 protein kinase domain.  |
| <b>翻译后修饰</b> | Autophosphorylated.  |

## 图片



ab107102, at 1/2 dilution, staining PIM2 in Human seminoma by Immunohistochemistry.

**Please note:** All products are "FOR RESEARCH USE ONLY. NOT FOR USE IN DIAGNOSTIC PROCEDURES"

## Our Abpromise to you: Quality guaranteed and expert technical support

- Replacement or refund for products not performing as stated on the datasheet
- Valid for 12 months from date of delivery
- Response to your inquiry within 24 hours

- We provide support in Chinese, English, French, German, Japanese and Spanish
- Extensive multi-media technical resources to help you
- We investigate all quality concerns to ensure our products perform to the highest standards

If the product does not perform as described on this datasheet, we will offer a refund or replacement. For full details of the Abpromise, please visit <https://www.abcam.cn/abpromise> or contact our technical team.

### **Terms and conditions**

---

- Guarantee only valid for products bought direct from Abcam or one of our authorized distributors