


Anti-PI 3 Kinase p85 alpha antibody [SP62] ab225720

重组 RabMAb

2 References **17 图像**

概述

产品名称	Anti-PI 3 Kinase p85 alpha抗体[SP62]
描述	兔单克隆抗体[SP62] to PI 3 Kinase p85 alpha
宿主	Rabbit
经测试应用	适用于: Flow Cyt (Intra), IHC-P, ICC/IF
种属反应性	与反应: Mouse, Rat, Human 预测可用于: Cow 
免疫原	Synthetic peptide. This information is proprietary to Abcam and/or its suppliers.
阳性对照	IHC-P: Human placenta, lung adenocarcinoma, pancreatic adenocarcinoma, bladder transitional cell carcinoma, colon adenocarcinoma, melanoma, prostate carcinoma, stomach adenocarcinoma, testis and breast adenocarcinoma tissues. Flow Cyt (Intra): NIH/3T3, PC-12 and MCF7 cells. ICC/IF: NIH/3T3 and MCF7 cells.
常规说明	This product is FOR RESEARCH USE ONLY. For commercial use, please contact partnerships@abcam.com.

性能

形式	Liquid
存放说明	Shipped at 4°C. Store at +4°C short term (1-2 weeks). Upon delivery aliquot. Store at -20°C long term. Avoid freeze / thaw cycle.
存储溶液	pH: 7.60 Preservative: 0.1% Sodium azide Constituents: PBS, 1% BSA
纯度	Protein A purified
纯化说明	Purified from TCS by protein A.
克隆	单克隆
克隆编号	SP62
同种型	IgG

应用

The Abpromise guarantee

Abpromise™承诺保证使用ab225720于以下的经测试应用

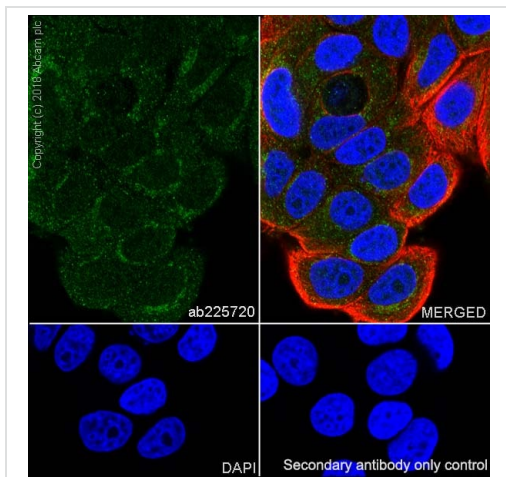
“应用说明”部分 下显示的仅为推荐的起始稀释度;实际最佳的稀释度/浓度应由使用者检定。

应用	Ab评论	说明
Flow Cyt (Intra)		Use at an assay dependent concentration. Primary incubation for 30 minutes at 4°C.
IHC-P		1/100. Perform heat mediated antigen retrieval with citrate buffer pH 6 before commencing with IHC staining protocol. Primary incubation for 30 minutes at room temperature.
ICC/IF		Use at an assay dependent concentration.

靶标

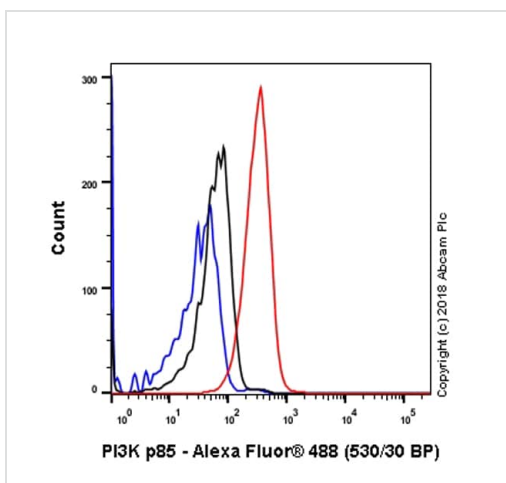
功能	Binds to activated (phosphorylated) protein-Tyr kinases, through its SH2 domain, and acts as an adapter, mediating the association of the p110 catalytic unit to the plasma membrane. Necessary for the insulin-stimulated increase in glucose uptake and glycogen synthesis in insulin-sensitive tissues.
组织特异性	Isoform 2 is expressed in skeletal muscle and brain, and at lower levels in kidney and cardiac muscle. Isoform 2 and isoform 4 are present in skeletal muscle (at protein level).
序列相似性	Belongs to the PI3K p85 subunit family. Contains 1 Rho-GAP domain. Contains 2 SH2 domains. Contains 1 SH3 domain.
结构域	The SH3 domain mediates the binding to CBLB, and to HIV-1 Nef.
翻译后修饰	Polyubiquitinated in T-cells by CBLB; which does not promote proteasomal degradation but impairs association with CD28 and CD3Z upon T-cell activation. Phosphorylated. Dephosphorylated by PTPRJ.

图片



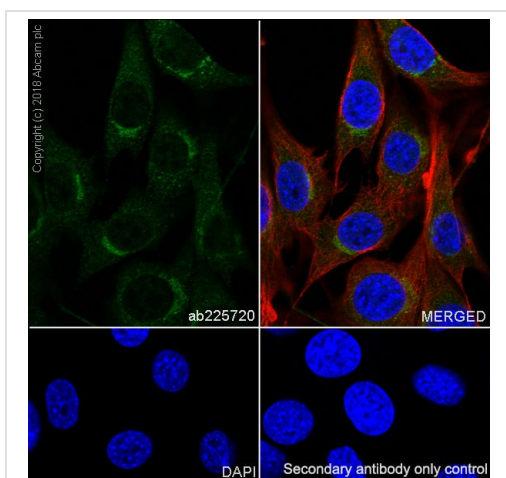
Immunocytochemistry/ Immunofluorescence - Anti-PI 3 Kinase p85 alpha antibody [SP62] (ab225720)

Immunocytochemistry/ Immunofluorescence analysis of MCF7 (human breast adenocarcinoma epithelial cell) cells labeling PI 3 Kinase p85 alpha with purified ab225720. Cells were fixed in 4% paraformaldehyde and permeabilized with 0.1% Triton X-100. Cells were counterstained with Ab195889 Anti-alpha Tubulin antibody [DM1A] - Microtubule Marker (Alexa Fluor® 594). Goat anti rabbit IgG (Alexa Fluor® 488, **ab150077**) was used as the secondary antibody at dilution. DAPI was used as nuclear counterstain. PBS instead of the primary antibody was used as the secondary antibody only control.



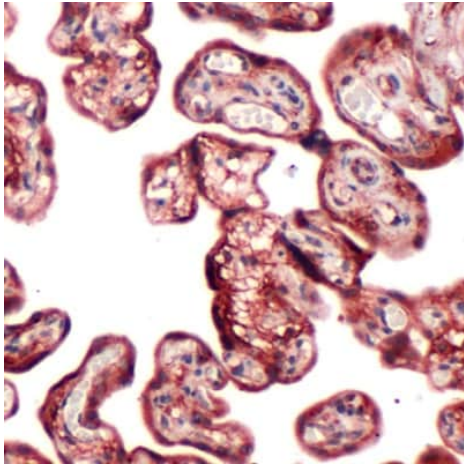
Flow Cytometry (Intracellular) - Anti-PI 3 Kinase p85 alpha antibody [SP62] (ab225720)

Flow cytometry analysis of PC-12 (rat adrenal gland pheochromocytoma) labeling PI 3 Kinase p85 alpha with purified ab225720 (red). Cells were fixed with 4% paraformaldehyde and permeabilised with 90% methanol. Goat anti rabbit IgG (Alexa Fluor® 488, **ab150077**) was used as a secondary antibody. Isotype control -Rabbit monoclonal IgG (**ab172730**) (Black). Unlabeled control -Unlabelled cells (blue).



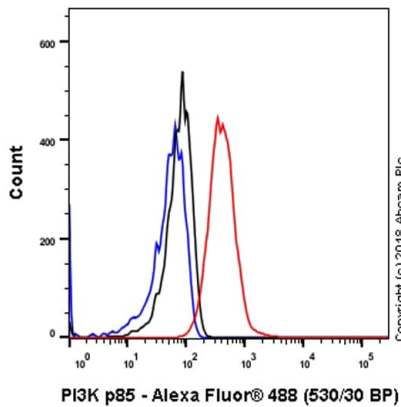
Immunocytochemistry/ Immunofluorescence - Anti-PI 3 Kinase p85 alpha antibody [SP62] (ab225720)

Immunocytochemistry/ Immunofluorescence analysis of NIH/3T3 (mouse embryonic fibroblast) cells labeling PI 3 Kinase p85 alpha with purified ab225720 at 1/250 (10 µg/ml). Cells were fixed in 4% paraformaldehyde and permeabilized with 0.1% Triton X-100. Cells were counterstained with Ab195889 Anti-alpha Tubulin antibody [DM1A] - Microtubule Marker (Alexa Fluor® 594) 1/200 (2.5 µg/ml). Goat anti rabbit IgG (Alexa Fluor® 488, **ab150077**) was used as the secondary antibody at 1/1000 (2 µg/ml) dilution. DAPI was used as nuclear counterstain. PBS instead of the primary antibody was used as the secondary antibody only control.



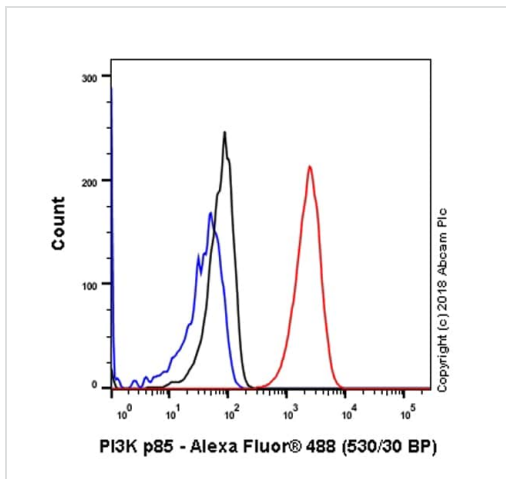
Immunohistochemistry (Formalin/PFA-fixed paraffin-embedded sections) - Anti-PI 3 Kinase p85 alpha antibody [SP62] (ab225720)

Formalin-fixed, paraffin-embedded human placenta tissue stained for PI 3 Kinase p85 alpha using ab225720 at 1/100 dilution in immunohistochemical analysis.



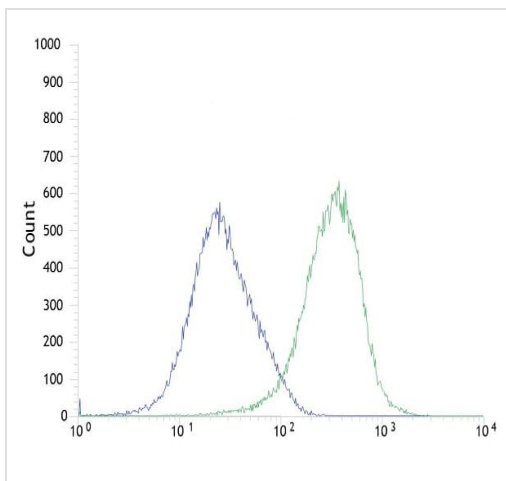
Flow Cytometry (Intracellular) - Anti-PI 3 Kinase p85 alpha antibody [SP62] (ab225720)

Flow cytometry analysis of NIH/3T3 (mouse embryo) labeling PI 3 Kinase p85 alpha with purified ab225720 at 1/250 dilution (10.32 µg/ml) (red). Cells were fixed with 4% paraformaldehyde and permeabilised with 90% methanol. Goat anti rabbit IgG (Alexa Fluor® 488, [ab150077](#)) at 1/2000 dilution was used as a secondary antibody. Isotype control -Rabbit monoclonal IgG ([ab172730](#)) (Black). Unlabeled control -Unlabelled cells (blue).



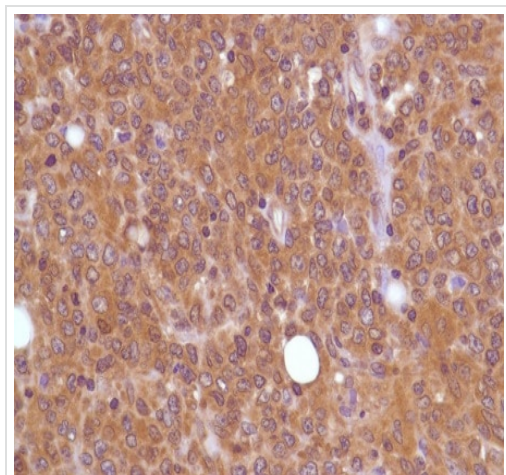
Flow Cytometry (Intracellular) - Anti-PI 3 Kinase p85 alpha antibody [SP62] (ab225720)

Flow cytometry analysis of MCF-7 (human breast carcinoma) labeling PI 3 Kinase p85 alpha with purified ab225720 (red). Cells were fixed with 4% paraformaldehyde and permeabilised with 90% methanol. Goat anti rabbit IgG (Alexa Fluor® 488, [ab150077](#)) was used as a secondary antibody. Isotype control -Rabbit monoclonal IgG ([ab172730](#)) (Black). Unlabeled control -Unlabelled cells (blue).



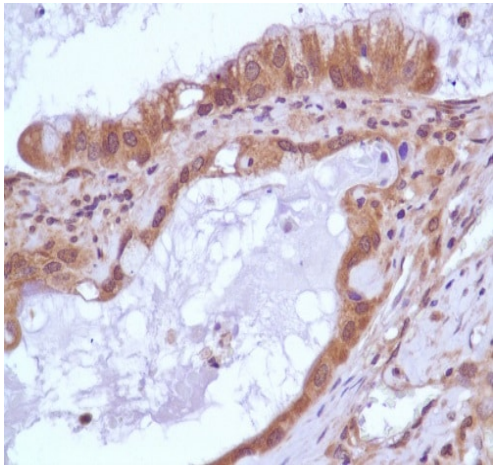
Flow Cytometry (Intracellular) - Anti-PI 3 Kinase p85 alpha antibody [SP62] (ab225720)

Flow cytometric analysis of MCF7 (human breast adenocarcinoma cell line) cell line labeling PI 3 Kinase p85 alpha with ab225720 (green) compared with a negative control of rabbit IgG (blue).



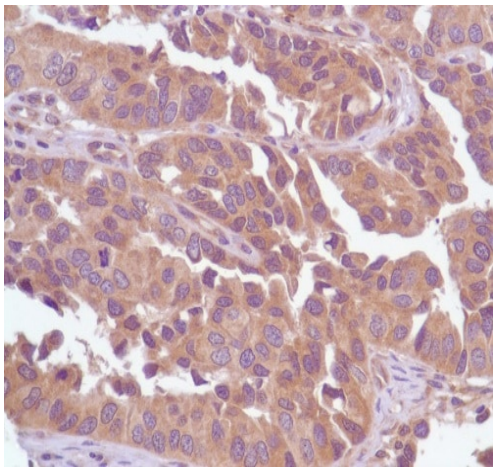
Immunohistochemistry (Formalin/PFA-fixed paraffin-embedded sections) - Anti-PI 3 Kinase p85 alpha antibody [SP62] (ab225720)

Formalin-fixed, paraffin-embedded human lung adenocarcinoma tissue stained for PI 3 Kinase p85 alpha using ab225720 at 1/100 dilution in immunohistochemical analysis.



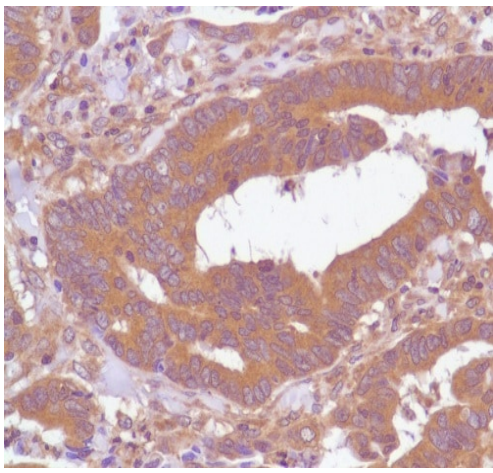
Immunohistochemistry (Formalin/PFA-fixed paraffin-embedded sections) - Anti-PI 3 Kinase p85 alpha antibody [SP62] (ab225720)

Formalin-fixed, paraffin-embedded human pancreatic adenocarcinoma tissue stained for PI 3 Kinase p85 alpha using ab225720 at 1/100 dilution in immunohistochemical analysis.



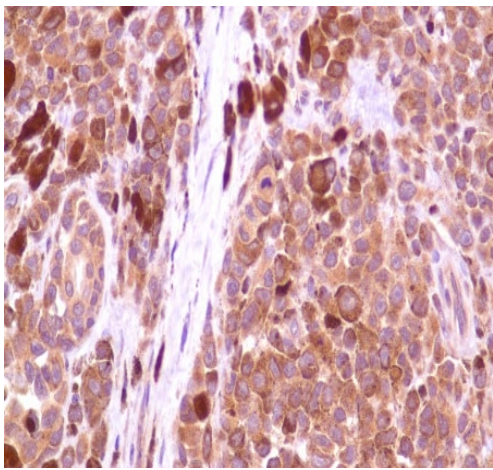
Immunohistochemistry (Formalin/PFA-fixed paraffin-embedded sections) - Anti-PI 3 Kinase p85 alpha antibody [SP62] (ab225720)

Formalin-fixed, paraffin-embedded human bladder transitional cell carcinoma tissue stained for PI 3 Kinase p85 alpha using ab225720 at 1/100 dilution in immunohistochemical analysis.



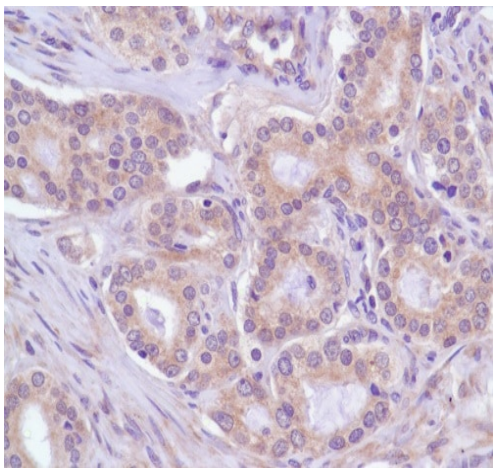
Immunohistochemistry (Formalin/PFA-fixed paraffin-embedded sections) - Anti-PI 3 Kinase p85 alpha antibody [SP62] (ab225720)

Formalin-fixed, paraffin-embedded human colon adenocarcinoma tissue stained for PI 3 Kinase p85 alpha using ab225720 at 1/100 dilution in immunohistochemical analysis.



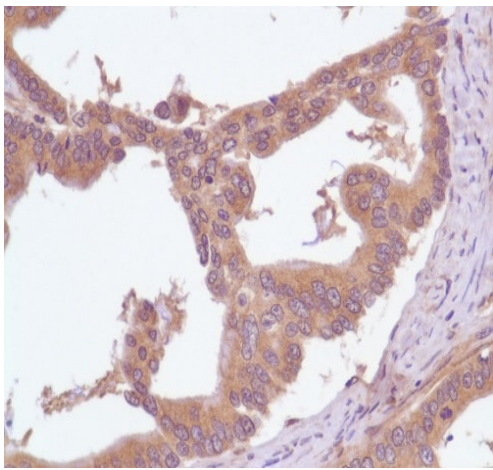
Immunohistochemistry (Formalin/PFA-fixed paraffin-embedded sections) - Anti-PI 3 Kinase p85 alpha antibody [SP62] (ab225720)

Formalin-fixed, paraffin-embedded human melanoma tissue stained for PI 3 Kinase p85 alpha using ab225720 at 1/100 dilution in immunohistochemical analysis.



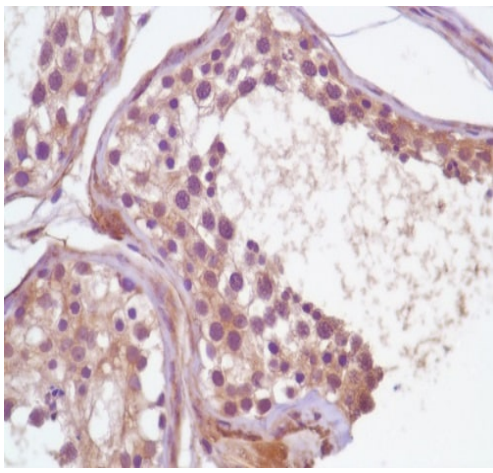
Immunohistochemistry (Formalin/PFA-fixed paraffin-embedded sections) - Anti-PI 3 Kinase p85 alpha antibody [SP62] (ab225720)

Formalin-fixed, paraffin-embedded human prostate adenocarcinoma tissue stained for PI 3 Kinase p85 alpha using ab225720 at 1/100 dilution in immunohistochemical analysis.



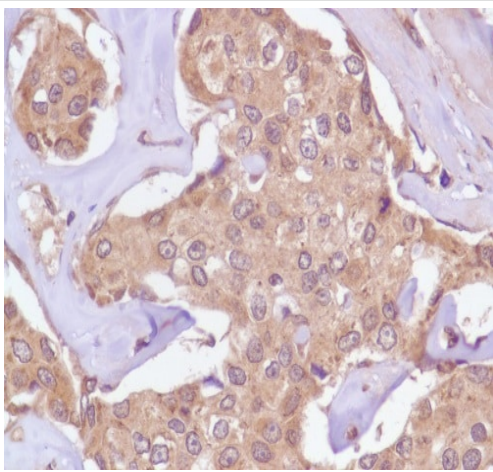
Immunohistochemistry (Formalin/PFA-fixed paraffin-embedded sections) - Anti-PI 3 Kinase p85 alpha antibody [SP62] (ab225720)

Formalin-fixed, paraffin-embedded human stomach adenocarcinoma tissue stained for PI 3 Kinase p85 alpha using ab225720 at 1/100 dilution in immunohistochemical analysis.



Immunohistochemistry (Formalin/PFA-fixed paraffin-embedded sections) - Anti-PI 3 Kinase p85 alpha antibody [SP62] (ab225720)

Formalin-fixed, paraffin-embedded human testis tissue stained for PI 3 Kinase p85 alpha using ab225720 at 1/100 dilution in immunohistochemical analysis.



Immunohistochemistry (Formalin/PFA-fixed paraffin-embedded sections) - Anti-PI 3 Kinase p85 alpha antibody [SP62] (ab225720)

Formalin-fixed, paraffin-embedded human breast adenocarcinoma tissue stained for PI 3 Kinase p85 alpha using ab225720 at 1/100 dilution in immunohistochemical analysis.

Why choose a recombinant antibody?



Research with confidence
Consistent and reproducible results



Long-term and scalable supply
Recombinant technology



Success from the first experiment
Confirmed specificity



Ethical standards compliant
Animal-free production

Anti-PI 3 Kinase p85 alpha antibody [SP62]
(ab225720)

Please note: All products are "FOR RESEARCH USE ONLY. NOT FOR USE IN DIAGNOSTIC PROCEDURES"

Our Abpromise to you: Quality guaranteed and expert technical support

- Replacement or refund for products not performing as stated on the datasheet
- Valid for 12 months from date of delivery
- Response to your inquiry within 24 hours
- We provide support in Chinese, English, French, German, Japanese and Spanish
- Extensive multi-media technical resources to help you
- We investigate all quality concerns to ensure our products perform to the highest standards

If the product does not perform as described on this datasheet, we will offer a refund or replacement. For full details of the Abpromise, please visit <https://www.abcam.cn/abpromise> or contact our technical team.

Terms and conditions

- Guarantee only valid for products bought direct from Abcam or one of our authorized distributors